

2016



# WHAT'S NEW IN 2016

Badger Ordnance was founded in 1982 to manufacture Pistols and Rifles of unparalleled accuracy and quality. As we expanded the scope of the custom firearms work, it became apparent that there was a lack of precision components available.

We now supply scope mounting equipment, Night Vision mounting solutions, accessories, tools and parts to the US Military, Special Operations community, and hundreds of Domestic and International Government and Law Enforcement agencies as well as thousands of civilian customers.

Badger Ordnance currently manufactures over 250 items including over 75 for precision rifles, the largest selection of tactical scope rings, mounts, an extensive line of tools, gages and accessories for precision rifles. We also make parts and accessories for M1 Garands, the M14 and the M16/M4/AR-15 family of rifles.

We are confident that you will find our products to be of the highest quality, fit, form and finish.

We are dedicated to customer satisfaction and if you ever have any questions, concerns or problems with any Badger Ordnance product, we will help you to the best of our ability and to your satisfaction.

Badger Ordnance is proud to be another example of the American dream. 34 years ago I was just a kid with a dream.

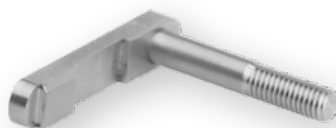
Respectfully  
Martin Bordson, President

## TACTICAL TITANIUM SERIES

BECAUSE OUNCES MAKE POUNDS!

### ■ TITANIUM ENHANCED BOLT CATCH

PAGE 15



### ■ TITANIUM MAGAZINE CATCH

PAGE 15

### ■ TITANIUM DUST COVER HINGE PIN

PAGE 15



### ■ TITANIUM CASTLE NUT

PAGE 15



### ■ TITANIUM PISTOL GRIP SCREW

PAGE 15



## ■ SLICK - SNIPERS LIGHTWEIGHT INTEGRATOR COMBAT KIT

Available to the General public for the first time, the SLICK is a complete modular Night Vision integration kit for the M151 Spotting scope (Leupold Mk 4).

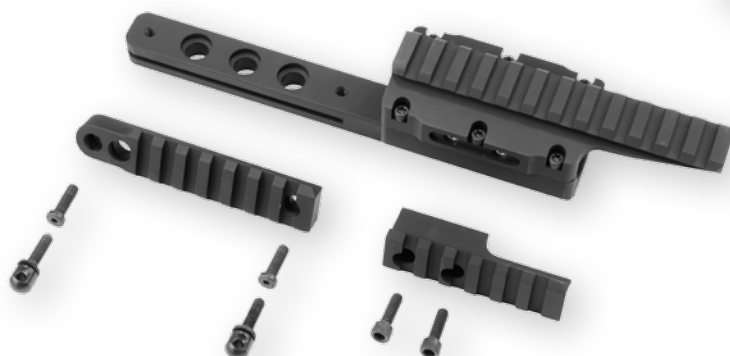
PAGE 16



## ■ LIGHT RIFLE EMBEDDED FRONT RAIL

The Light Rifle Embedded Front Rail (LR-EFR) allows shooters with lightweight, narrow forend stocks the ability to embed a Night Vision integration system that will facilitate the use of clip on Night Vision devices.

PAGE 16



## ■ SORIS - SNIPER/OBSERVER RAIL INTERFACE SYSTEM

Made for the Ziess Spotter 60 & 45 scopes.

The SORIS provides an inverted UNS mounting rail and 2 accessory rails that will fit any of the 5 mounting locations on the scope. Mil Spec Anodized Hard Coat Type III, Black.

PAGE 16



## ■ TDX GAS MANIFOLD

PAGE 14



FOLLOW US ON FACEBOOK  
<http://www.facebook.com/badgerOrdnance>

FOR MORE UPDATES AND DETAILS VISIT  
[WWW.BADGERORDNANCE.COM](http://WWW.BADGERORDNANCE.COM)

# SCOPE RINGS

In the early 1990's Badger Ordnance identified the need for quality tactical scope rings and mounts designed to meet the higher demands of the emerging Military and Law Enforcement tactical shooting community. Badger Scope Rings are machined from Steel or Aluminum barstock as serialized Matched Pairs. This assures that both rings are identical and eliminates the damaging effects of mismatched, mass produced rings.

Our rings are designed to fit MIL STD 1913 (also called Picatinny) optical rails and are finished with Mil Spec Black Oxide. All of the hardware on our rings is of our design and made to our specifications including the Torx® screws that hold the scope securely in the rings. Our strongest rings, the MAX-50, are made to the same specifications as our standard rings but are 1 inch wide. Aluminum rings are Mil Spec Anodized Hard Coat Type III, Black.

## ■ 30 MM UNIMOUNT

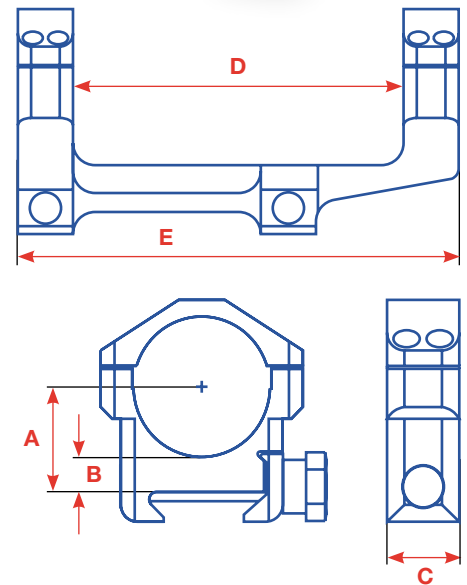
Made specifically to co-witness with the newest clip on Night Vision and Thermal/Fusion devices. Made with increased forward offset to allow the use of popular low magnification and long eye relief optics.

P/N 306-317A 30mm, H: 1.54" L: 5.8", Zero cant, Aluminum

## ■ PSR UNIMOUNT

The PSR Unimount was designed for the US Army's Precision Sniper Rifle program to fit the Schmidt & Bender 5-25x56 mm Day optic. Designed to clear the objective lens on a monolithic rail and allow for coaxial mounting of Universal Night Vision and Thermal Sighting Systems. Mil Spec Anodized Hard Coat Type III, Black.

P/N 306-95 34mm, H: 1.49" L: 5.0", Zero cant, Aluminum



## UNIMOUNT SIZING CHART

The chart is in inches

P/N	Size	A	B	C	D	E	Weight
306-62	30 mm Medium, Zero cant, Unimount	.855	.294	.625	2.125	3.375	4.6 oz.
306-64	34 mm Ultra High, Zero cant, Unimount	1.490	.820	.625	3.375	4.625	6.8 oz.
306-67	34 mm Ultra High, Unimount, 20 MOA cant.	1.350	.598	.625	3.400	4.650	6.2 oz.
306-95	34 mm Ultra High, Unimount, Zero cant	1.490	.820	.625	3.750	5.000	6.8 oz.
306-96	30 mm Extra High, Unimount, 20 MOA cant	1.300	.610	.625	3.400	4.650	6.0 oz.
306-97	30 mm Ultra High, Unimount, 20 MOA cant	1.400	.710	.625	3.400	4.650	6.4 oz.
306-317A	30 mm Extreme High, Unimount, Zero MOA	1.540	.950	.625	4.550	5.800	7.8 oz.

## SCOPE RING SIZING CHART

The chart is in inches

P/N	Size	A	B	C	Weight	P/N	Size	A	B	C	Weight
306-08	30 mm Standard	.823	.232	.625	7.3 oz.	306-29	30 mm USN EBR "Issue Item"	1.250	.659	.625	4.3 oz.
306-09	30 mm High	1.125	.534	.625	9.5 oz.	306-39	30 mm USMC SASR "Issue Item"	1.125	.534	1/.625	12.5 oz.
306-10	30 mm Ultra High	1.300	.809	.625	10.7 oz.	306-50	30 mm MAX-50 Ultra High	1.450	.859	1.0	17.5 oz.
306-11	30 mm MAX-50 Standard	.823	.232	1.0	11.3 oz.	306-51	30 mm MAX-50 Ultra High	1.450	.859	1.0	8.5 oz.
306-13	30 mm MAX-50 High	1.125	.534	1.0	15.2 oz.	306-52	30 mm Medium	.885	.294	.625	3.9 oz.
306-14	34 mm Standard	1.0	.330	.625	8.6 oz.	306-54	34 mm Extra High	1.375	.705	.625	4.7 oz.
306-16	30 mm Standard	.823	.232	.625	3.9 oz.						
306-17	30 mm High	1.125	.534	.625	4.6 oz.	306-63	34 mm Medium	1.125	.455	.625	4.6 oz.
306-18	30 mm Ultra High	1.400	.809	.625	5.1 oz.	306-75	34 mm USMC M40A3 "Issue Item"	1.0	.330	1/.625	11.0 oz.
306-19	30 mm MAX-50 Standard	.823	.232	1.0	5.5 oz.	306-76	34 mm USMC SASR "Issue Item"	1.490	.820	1/.625	16.0 oz.
306-20	30 mm Medium	.885	.294	.625	7.8 oz.	306-77	34 mm Ultra High	1.490	.820	.625	12.0 oz.
306-21	30 mm Medium High	1.0	.409	.625	8.7 oz.	306-78	34 mm MAX-50	1.0	.330	1.0	7.0 oz.
306-24	30 mm USMC M40A3 "Issue Item"	.886	.295	1/.625	8.9 oz.	306-79	30 mm Extra High	1.250	.659	.625	5.0 oz.
306-27	34 mm High	1.275	.605	.625	4.1 oz.	306-120	35 mm Medium	1.125	.436	.625	4.5 oz.
306-28	30 mm USMC DMR "Issue Item"	1.031	.440	1/.625	12.0 oz.	306-130	35 mm Extra High	1.375	.686	.625	5.8 oz.

## ■ 30 & 34 MM 1-PIECE UNIMOUNT

P/N 306-62	30 mm, H: 0.885" L: 3.375", Zero cant, Aluminum
P/N 306-64	34 mm, H: 1.49" L: 4.625", Zero cant, Aluminum
P/N 306-67	34 mm, H: 1.3" L: 4.650", 20 MOA cant, Aluminum
P/N 306-95	34 mm, H: 1.49" L: 5", Zero cant, Aluminum
P/N 306-96	30 mm, H: 1.3" L: 4.650", 20 MOA cant, Aluminum
P/N 306-97	30 mm, H: 1.4" L: 4.650", 20 MOA cant, Aluminum



## MILITARY ISSUE SCOPE RINGS

### ■ USMC DMR

P/N 306-28	30 mm, H: 1.031", Steel NSN 1005-01-521-0922
------------	---

### ■ USMC M107 (SASR)

P/N 306-76	34 mm, Ultra High, H: 1.49", Steel NSN 1005-01-537-8616
------------	---

### ■ USMC SASR (M82A2)

P/N 306-39	30 mm with 1" inserts, H: 1.125", Steel NSN 1005-01-521-0930
------------	--

### ■ USMC M40A3

P/N 306-24	30 mm with 1" inserts, H: 0.886", Steel NSN 5365-09-511-9954
------------	--

### ■ USN EBR MK14 MOD 0

P/N 306-29	30 mm, H: 1.120", Aluminum
------------	----------------------------

### ■ USMC M40A3/A5

P/N 306-75	34 mm, H: 1.0", Steel NSN 1005-01-537-8618
------------	---

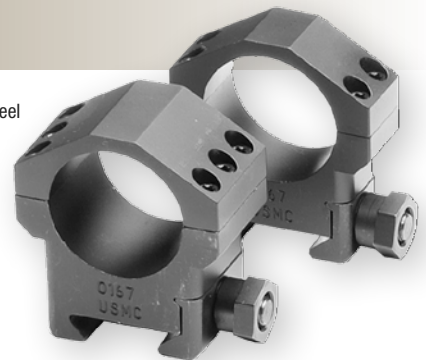
### ■ US ARMY M2010

P/N 306-54	34 mm, H: 1.375", Aluminum
------------	----------------------------

306-76 Steel



306-28 Steel



306-39 Steel



306-24 Steel



306-29 Aluminum



306-75 Steel



## 30mm SCOPE RINGS

### ■ STANDARD HEIGHT

P/N 306-08 30 mm, Standard, H: 0.823", Steel  
P/N 306-16 30 mm, Standard, H: 0.823", Aluminum

### ■ MEDIUM

P/N 306-20 30 mm, Medium, H: 0.885", Steel  
P/N 306-52 30 mm, Medium, H: 0.885", Aluminum

### ■ MEDIUM HIGH

P/N 306-21 30 mm, Medium High, H: 1.0", Steel

### ■ HIGH & EXTRA HIGH

P/N 306-09 30 mm, High, H: 1.125", Steel  
P/N 306-17 30 mm, High, H: 1.125", Aluminum  
P/N 306-79 30 mm, Extra High, H: 1.25", Aluminum

### ■ ULTRA HIGH (AR-15 FLAT TOP)

P/N 306-10 30 mm, Ultra High, H: 1.4", Steel  
P/N 306-18 30 mm, Ultra High, H: 1.4", Aluminum

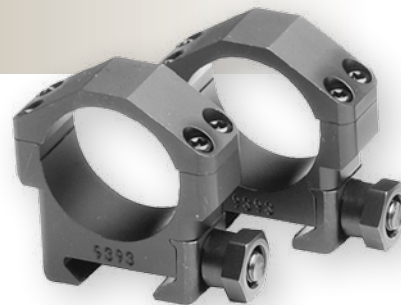
### ■ 30 MM AR-10 & SR-25 STYLE RIFLES

P/N 306-79 30 mm, Extra High, H: 1.25", Steel

306-20 Steel  
306-52 Aluminum



306-08 Steel  
306-16 Aluminum



306-21 Steel



306-09 Steel  
306-17 Aluminum



306-10 Steel  
306-18 Aluminum



## MAX-50 SCOPE RINGS

The MAX-50 rings are one inch wide, giving them 60% more holding power than any other ring available.

Utilizing 6 #8-40 Torx® screws to distribute the load providing the maximum amount of holding power while minimizing the chance of damaging the scope. Machined from Steel or Aluminum as serialized Matched Pairs. MIL STD 1913 compatible, designed for the demanding .50 BMG round.

### ■ STANDARD HEIGHT

P/N 306-11 30 mm, Standard, H: 0.823", Steel  
P/N 306-19 30 mm, Standard, H: 0.823", Aluminum

### ■ HIGH

P/N 306-13 30 mm, High, H: 1.125", Steel

### ■ ULTRA HIGH

P/N 306-50 30 mm, Ultra High, H: 1.45", Steel  
P/N 306-51 30 mm, Ultra High, H: 1.45", Aluminum

306-11 Steel  
306-19 Aluminum



306-13 Steel



306-50 Steel  
306-51 Aluminum



## 34mm SCOPE RINGS

### ■ 34 MM MAX-50 SCOPE RINGS

P/N 306-78      34 mm, Standard, H: 1.0", Aluminum

### ■ 34 MM SCOPE RINGS

P/N 306-14      34 mm, Standard, H: 1.0", Steel  
 P/N 306-27      34 mm, High, H: 1.275", Aluminum  
 P/N 306-54      34 mm, Extra High, H: 1.375", Aluminum  
 P/N 306-61      34 mm, Medium, H: 1.125", Steel  
 P/N 306-63      34 mm, Medium, H: 1.125", Aluminum  
 P/N 306-77      34 mm, Ultra high, H: 1.49", Steel

306-78 Aluminum

306-27 Aluminum



### ■ USMC M40A3/A5

P/N 306-75      34 mm, Standard, H: 1.0", Steel  
 NSN 1005-01-537-8618

306-75 Steel

306-61 Steel

306-77 Steel



### ■ US ARMY M2010

P/N 306-54      34 mm, H: 1.375"  
 Aluminum

306-54 Aluminum

306-14 Steel



## 35mm SCOPE RINGS

### ■ 35 MM SCOPE RINGS

P/N 306-120      35 mm, H: 1.125" Aluminum  
 P/N 306-130      35 mm, H: 1.375" Aluminum

306-120 Aluminum

306-130 Aluminum



## SPACERS

### ■ MAX-50 SCOPE RING REDUCER

Made specifically for MAX-50 rings, reduces our 30 mm rings to 1".

P/N 306-15 Steel, Black Oxide Finish



### ■ STANDARD SCOPE RING REDUCER

Reduces our 30 mm and 34 mm rings. Will work for any 5/8" wide rings. (Not for MAX-50 rings)

P/N 306-12 30 mm to 1", Steel, Black Oxide Finish



### ■ 34MM TO 30MM SCOPE RING REDUCER

Reduces our 34 mm to 30 mm rings. Will work for any 5/8" wide rings. (Not for MAX-50 rings) Aluminum. Mil Spec Anodized Hard Coat Type III, Black.

P/N 306-67A 34 mm to 30 mm

## RING ACCESSORIES

### ■ MICRO SIGHT MOUNT

Mounts in place of your scope ring cap, allowing the use of a micro optic back up sight such as the Aimpoint T1, Trijicon RMR, or the Doctor Optic. Aluminum. Available for 30 & 34 mm scopes rings.

Mil Spec Anodized Hard Coat Type III, Black.

P/N 306-41 30 mm, 0.4 oz.  
P/N 306-42 30 mm, MAX-50, 0.7 oz.  
P/N 306-43 34 mm, 0.4 oz.  
P/N 306-44 34 mm, MAX-50, 0.9 oz.

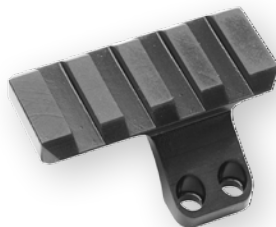


### ■ 12 O'CLOCK PICATINNY RAIL CAP

This cap allows the use of lights, lasers and alternate sighting devices. Fits any 30 mm (4 screw) Badger ring, old style Leupold Mk 4 rings and Knights Armament rings. Made from Ordnance grade steel.

Mil Spec Manganese Phosphate.

P/N 306-33 5 slot version, 2.7 oz.  
P/N 306-34 MAX-50 rings, 2.8 oz.



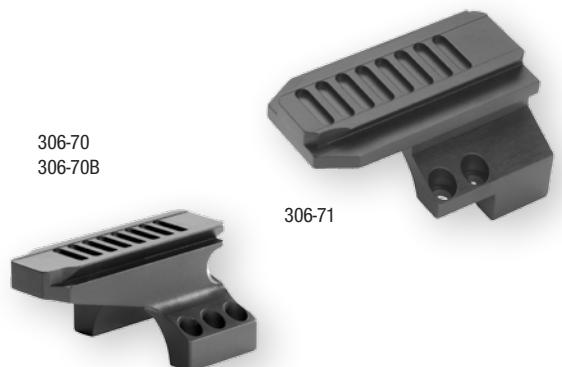
Micro Sight Mount P/N 306-43 & ACI Ring Cap P/N 306-48

### ■ SIMRAD CAP

Ring cap for mounting a SIMRAD Night Vision device onto the rifle scope. Made from Ordnance grade steel.

Mil Spec Manganese Phosphate.

P/N 306-70 30 mm for Badger Ordnance USMC rings P/N 306-24, 306-28 & 306-39  
P/N 306-70B 34 mm for Badger Ordnance rings P/N 306-75 & 306-76  
P/N 306-71 30 mm for Mk 11 Mod 0. Fits Badger 4 screw rings and Knights (KAC) 30 mm rings.



306-70  
306-70B

306-71

# CO-SINE MOUNTS



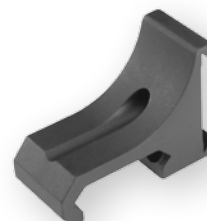
## ■ ANGLE CO-SINE INDICATOR MOUNT

### GEN 1

Machined Aluminum mount allows you to mount the Sniper Tool Designs Angle Co-Sine Indicator (ACI) directly to your MIL STD 1913 mount. Attaches with 2 soft point set screws so it will not mar your mount. Also fits M16/AR-15 flat top rifles. Mil Spec Anodized Hard Coat Type III, Black.

Mounts the ACI above rail.

P/N 306-37      0.4 oz.  
NSN 1005-01-584-5408



### GEN 2

Machined Aluminum mount allows you to mount the Sniper Tool Designs Angle Co-Sine Indicator (ACI) directly to your MIL STD 1913 mount. Attaches with 2 soft point set screws so it will not mar your mount. Also fits M16/AR-15 flat top rifles. Mil Spec Anodized Hard Coat Type III, Black.

Mounts the ACI below rail.

P/N 306-73      0.43 oz.



## ■ ACI RING CAP & KIT

Aluminum ring cap allows the Angle Co-Sine Indicator (ACI) to be mounted directly to your scope ring. Fits the 4 screw Badger Ordnance scope rings. Mil Spec Anodized Hard Coat Type III, Black.

P/N 306-35      30 mm, 0.9 oz.  
P/N 306-35A      30 mm, ACI & Ring Cap Kit, 1.6 oz.  
P/N 306-48      34 mm, 1.0 oz.  
P/N 306-48A      34 mm, ACI & Ring Cap Kit, 1.7 oz.



## ■ SNIPER TOOL DESIGN ANGLE CO-SINE INDICATOR KIT

### GEN 1

Both the ACI and Badger ACI mount sold as a unit.

P/N 306-37A      1.2 oz.



### GEN 2

Both the ACI and Badger ACI mount sold as a unit.

P/N 306-73A      1.23 oz.



## ■ M110 SASS ACI MOUNT

The Badger Ordnance M110 ACI Mount is designed to integrate with the Knights Armament (KAC) Unimount issued on the M110 SASS. This further enhances the employment of the ACI dial issued in the Sniper Sustainment/Upgrade Kit when used in conjunction with the M110 System. The mount is made from billet Aluminum. Mil Spec Anodized Hard Coat Type III, Black.

P/N 306-111      ACI ring mount, 0.9 oz.  
P/N 306-111A      ACI ring mount and Mil Spec ACI, 1.7 oz.

# SCOPE BASES

## ■ SCOPE RAIL, REMINGTON

Our "Picatinny" spec one piece mounts are machined from 4142 pre-hard (28-32Rc) steel. It features an integrated recoil lug, and a true MIL STD 1913 slot pattern for more mounting options. Works with Badger rings or any Picatinny compatible ring. All rails are supplied with Torx® screws.

## ■ MODEL 700, REMINGTON

P/N 306-06	Short action, 20 MOA cant, 4.8 oz.
P/N 306-06A	Short action, 20 MOA cant, Aluminum, 2 oz.
P/N 306-46	Short action, 30 MOA cant, 5.0 oz.
P/N 306-46L	Short action, LH, 30 MOA cant, 4.8 oz.
P/N 306-06F	Short action, Zero cant, 7.4 oz.
P/N 306-06L	Short action, LH, 20 MOA cant, 4.8 oz.
P/N 306-06-8	Short action, w/ #8-40 screws, 20 MOA cant, 4.8 oz.
P/N 306-56	Short action, 45 MOA cant, 5.1 oz.
P/N 306-56L	Short action, LH, 45 MOA cant, 5.1 oz.
P/N 306-07	Long action, 20 MOA cant, 5.6 oz.
P/N 306-07A	Long action, 20 MOA cant, Aluminum, 2.4 oz.
P/N 306-47	Long action, 30 MOA cant, 5.7 oz.
P/N 306-47L	Long action, LH, 30 MOA cant, 5.7 oz.
P/N 306-07F	Long action, Zero cant, 5.5 oz.
P/N 306-07L	Long action, LH, 20 MOA cant, 5.6 oz.
P/N 306-07-8	Long action, w/ #8-40 screws, 20 MOA cant, 5.6 oz.
P/N 306-57	Long action, 45 MOA cant, 5.7 oz.
P/N 306-57L	Long action, LH, 45 MOA cant, 5.7 oz.

## ■ MODEL SEVEN, REMINGTON

## ■ SCOPE RAIL, SAVAGE

P/N 306-06 SAV	Short action, 20 MOA cant, 5.4 oz.
P/N 306-06 SAT	Short action, for rifles w/Accutigger, 20 MOA cant, 4.9 oz.
P/N 306-06 SATS	Short action, Solid top receivers w/Accutigger, 20 MOA cant, 5.5 oz., no lug
P/N 306-07 SAT	Long action, for rifles w/Accutigger, 20 MOA cant, 5.7 oz.
P/N 306-07 SATS	For the 110 BA action only, #8-40 screws, 20 MOA cant, 5 oz., no lug

## ■ SCOPE RAIL, SAKO

P/N 306-80	Sako TRG 22/42, 20 MOA Picatinny rail, 6.3 oz.
P/N 306-81	Sako TRG 22/42, 35 MOA Picatinny rail, 6.3 oz.

## ■ REMINGTON PICATINNY SHOTGUN SCOPE RAIL

Mounts to any Remington 870, 1100 and 1187 Shotgun. Made from Ordnance grade steel, Mil Spec Manganese Phosphate finish. Rail is 5.5" long. Weight: 4.7 oz.

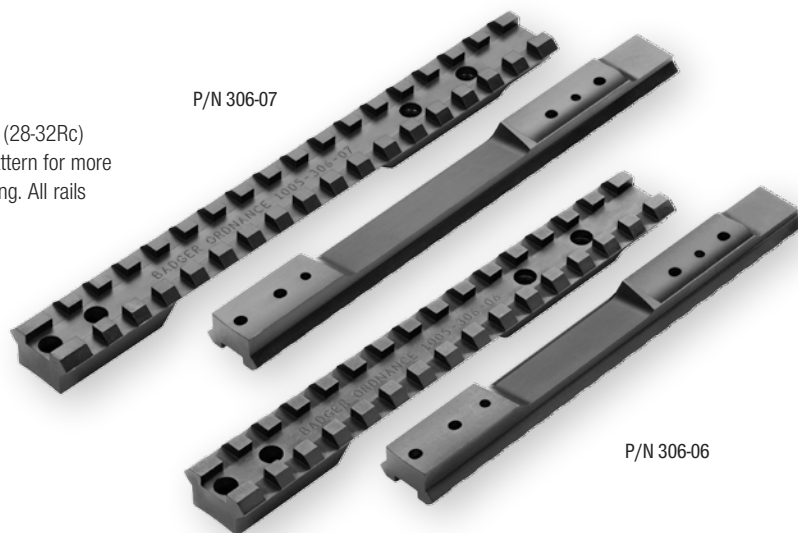
P/N 500-20	For factory drilled Tactical models.
------------	--------------------------------------

P/N 500-20



P/N 306-07

P/N 306-06



Badger rails have an integral recoil lug (where applicable) to manage the recoil forces created by heavy tactical scopes.

## ■ SCOPE RAIL, WINCHESTER, FN

P/N 306-06W	Winchester Short action, 20 MOA cant, 4.9 oz.
P/N 306-06WSM	Winchester Short Mag action, 20 MOA cant, 4.7 oz.
P/N 306-06SPR	FN SPR, 20 MOA cant, 4.7 oz.
P/N 306-07W	Winchester Long action, 20 MOA cant, 5.2 oz.

## ■ LUGGED SCOPE RAILS FOR REMINGTON 40X AND M40A3/5

### FOR CLIP SLOTTED ACTIONS ONLY

These lugged rails are intended to fit into the clip slot feature in a 40X Remington action or an action modified to the USMC M40A3/A5 spec. Made to MIL STD 1913 of pre-hard 4142 steel. Mil Spec Manganese Phosphate finish.

P/N 306-06UX	#6-48 screws, 20 MOA cant, 5.1 oz.
P/N 306-06A3	#8-40 screws, 30 MOA cant, USMC issue, 7.7 oz., Issue Item, (image not shown)

P/N 306-06UX



# PRECISION RIFLE

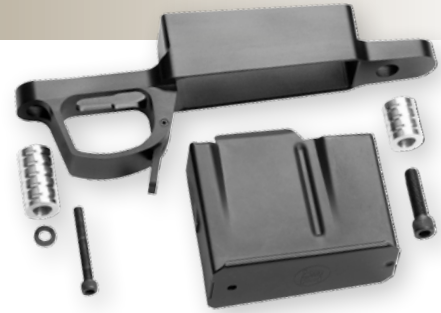
## TRIGGERGUARDS

### ■ M7 REMINGTON BDM TRIGGERGUARD

Made just like our USMC Issue M5 guard, but for the Remington Model 7. Available in Standard (.308 based) caliber and .223 based caliber. Aluminum, Mil Spec Anodized Hard Coat Type III, Black.

P/N 307-10      Standard caliber, 5 round magazine. 9.2 oz.  
P/N 307-15      .223 caliber, 10 round magazine. 8.3 oz.

M7 Model Seven Triggerguard  
P/N 307-10



### ■ M5 BDM (BADGER DETACHABLE MAGAZINE) SYSTEM

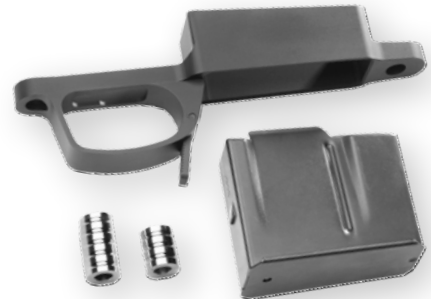
The Badger BDM Triggerguard is a heavy-duty guard like our M4 but allows quick loading/unloading via a bulletproof 5 round magazine utilizing a time proven paddle style mag release. 10 round magazines available for short action version only. The guard includes grade 5 TORX® screws and pre-made bedding pillars to guarantee exact fit and perfect function, supplied with one 5 round magazine.

Made from aircraft grade Aluminum. Mil Spec Anodized Hard Coat Type III, Black. Inletting required.

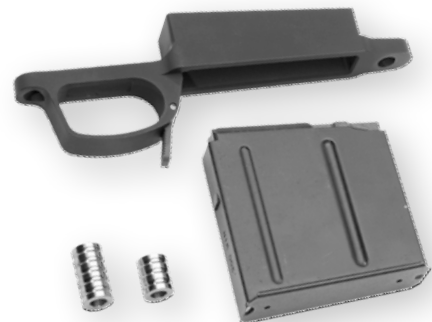
P/N 306-82      Short action, Standard Short action calibers 10.2 oz.  
NSN 1005-01-557-3086  
P/N 306-82C      Short action, Standard Short action calibers 10.2 oz.

P/N 306-83      Long action, Magnum, 13.0 oz.  
P/N 306-86      Rem M700 L/A, .338 Lapua CIP, 8.6 oz.  
P/N 306-89      Rem M700 S/A, .223 Rem., 7.3 oz.

M5 Triggerguard Short action  
P/N 306-82  
P/N 306-82C  
P/N 306-89



M5 Triggerguard Long action  
P/N 306-83  
P/N 306-86



#### Maximum overall cartridge length:

P/N 306-82-05      5rd Short action magazines, OAL 2.89"  
P/N 306-82-10      10rd Short action magazines, OAL 2.89"  
P/N 306-83-05      5rd Magnum magazines, OAL 3.65"  
P/N 306-86-05      5rd CIP Lapua Magnum, OAL 3.75"

### ■ M4 TRIGGERGUARD

A solid, heavy duty, one piece replacement for the standard Remington Aluminum guard. Extra wide and thick in the front and rear tang for increased clamping power. Uses standard socket head cap screws for maximum strength and interchangeability. Screws provided. In the white.

P/N 306-02      M700 Short action, Steel, 8.6 oz.  
P/N 306-03      M700 Long action, Steel, 9.7 oz.  
P/N 306-02A      M700 Short action, Aluminum Alloy, 3.3 oz.  
P/N 306-03A      M700 Long action, Aluminum Alloy, 3.8 oz.

M700 Short action  
P/N 306-02



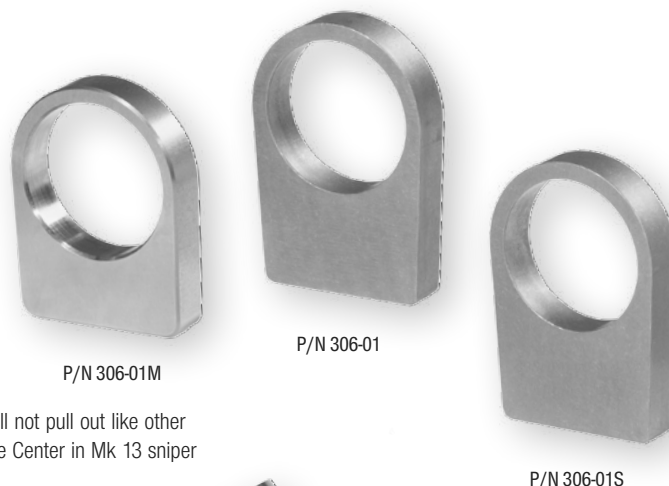
M700 Long action  
P/N 306-03

# PRECISION RIFLE

## ■ RECOIL LUG

For use with the M700 series rifles. Thicker (.312" precision ground), taller, tapered and radiused corners on the bottom for ease of installation.

P/N 306-01	4142 Ordnance Steel, in the white, 1.9 oz.
P/N 306-01S	416 Stainless Steel, 1.9 oz.
P/N 306-01M	4142 Pre-hard Steel, in the white, USMC Issue, M40A3/A5

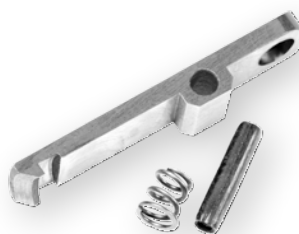


## ■ M16 STYLE EXTRACTOR

This simple but effective design works just like the extractor in an M16 rifle. It will not pull out like other extractors if a sticky cartridge is encountered. Used by the Naval Surface Warfare Center in Mk 13 sniper rifles. Made from pre-hard 4142 steel.

Gunsmith installation required.

P/N 306-90	Standard calibers (.308)
P/N 306-91	Magnum calibers
P/N 306-92	Lapua/Rigby based calibers



## ■ TACTICAL BOLT KNOB & MINI KNOB

Oversized bolt knob allows fast, easy access to bolt, even with gloved hands. No more holding the bolt handle with two fingers to pass the scope eyepiece. The extra size and length gives unparalleled control of the bolt. Provides extra leverage for stuck rounds. 7075 T6 Aluminum alloy to keep the weight down and a Mil Spec Anodized Hard Coat Type III finish to last a life time.

### TACTICAL BOLT KNOB

P/N 306-31	Black
P/N 306-31TN	Desert Tan
P/N 306-31OD	Olive Drab

Diameter: .975", Length: 1.6", 1.2 oz.

### MINI BOLT KNOB

P/N 306-74	Black, Diameter .898", Length 1.2", 0.7 oz.
------------	---



## ■ BADGER BONE SHOOTING BAG

This is a bone shaped sand sock taken to the next level. The bones design was the result of input from over a dozen Military Snipers, Police Marksman and Match Shooters. The Bone can be used in several different configurations and has an ingenious filler neck so the Bones volume can be tailored to the individual shooters needs. Badger Bones come filled with stable non-absorbent material for years of service. Weight: approx: 7.8 oz.

P/N 3000M	Multicam
P/N 3000W	MARPAT Woodland Digital
P/N 3000D	MARPAT Desert Digital
P/N 3000A	ATACS
P/N 3000T	Coyote



# MUZZLE DEVICES

## FTE REMOVABLE MUZZLE BRAKE



P/N 306-38

This is a clamp on style brake and can be easily removed for cleaning or installation of a suppressor. Ported to the sides to reduce ground blast. This is our most effective brake. Calibers .22 and up. 3" long, 1.375" dia. 4140 Steel. Mil Spec Manganese Phosphate finish.

Must be fit by a competent gunsmith.

P/N 306-38	3/4-28 thread and .875" minimum Bbl diameter, 6.8 oz.
P/N 306-38B	5/8-24 thread and .800" minimum Bbl diameter, 7.9 oz.
P/N 306-38C	3/4-24 thread and .875" minimum Bbl diameter, 6.8 oz.

P/N 249-81  
P/N 249-83



P/N 249-80  
P/N 249-82



## MINI FTE MUZZLE BRAKE

NOW THERE IS AN FTE FOR ANY OCCASION OR RIFLE!

The New Mini is a clamp on so style, there is no modification to your threaded barrel required. Available in 2 thread sizes, 1/2-28 with a .22 cal. hole and 5/8-24 with a .30 cal. hole. Made from 4140 steel.

Mil Spec Manganese Phosphate finish.

P/N 249-81	.22 cal., 1/2-28 thread, 2.175" OAL, 1.175" dia, 5.7 oz.
P/N 249-83	.30 cal., 5/8-24 thread, 2.175" OAL, 1.175" dia, 5.5 oz.

## MICRO FTE MUZZLE BRAKE

This smaller version of our FTE brake is designed with the AR-10/15 platform shooter in mind. While a much smaller design, it still maintains enough surface area to make it a very effective brake. It is easily removed for cleaning or the installation of a suppressor. Ports are to the sides to reduce ground blast. Calibers .22 and up. Installs using a crush washer (included). 4140 steel. Mil Spec Manganese Phosphate finish.

P/N 249-80	.22 cal., 1/2-28 thread, 1.75" OAL, 1" dia, 2.56 oz.
P/N 249-82	.30 cal., 5/8-24 thread, 1.75" OAL, 1" dia, 2.72 oz.

## METRIC MINI FTE MUZZLE BRAKE

Same as our English threaded Mini FTE but in 18 X .1 for some of the popular European sniper rifles. Mil Spec Manganese Phosphate finish.

P/N 249-91	.30 cal. 18 x 1 mm thread, 1.75" OAL, 1" dia, 2.7 oz.
------------	---

## THRUSTER TACTICAL COMPENSATOR

Designed to reduce the recoil impulse felt by the shooter and keep the muzzle rise to a minimum. Ports are angled up to minimize ground blast. 1" dia and 2.375" long. Made from 416 Stainless steel.

Must be fit by a competent gunsmith.

P/N 306-30	3/4-28 thread
P/N 306-30A	Unthreaded Gunsmith model
P/N 306-30B	5/8-24 thread
P/N 306-30C	3/4-24 thread



# CHARGING HANDLES

## ■ GEN 3 AMBIDEXTROUS CHARGING HANDLE

Badger Ordnance, the people that invented the Ambidextrous charging handle, have done it ... again!

### Introducing the Generation 3 Ambidextrous Charging Handle.

Redesigned to be significantly more robust than a GI handle, as well as giving ambidextrous capability. The new Gen 3 latches are just the right size and shape to give you rapid access, not be a snag hazard, and with generous radiuses it's not a pain in your back!

Made from 7075 T6 forgings, the handle is stronger than the competitions billet or extruded handles. Larger Stainless steel pins hold the latches in place, and the mechanism is operated by a Stainless steel spring.

US Patent #7,240,600, #7,900,546



## ■ FOR AR-15/M16

The Gen 3 handle will fit any Mil Spec AR-15/M16/M4 upper. Works with all known gas piston rifles as well as .22 rimfire conversions. Mil Spec Anodized Hard Coat Type III, Black.

P/N 249-60      Length: 7.53", 1.3 oz.

## ■ FOR AR-10/SR-25

This Gen 3 handle will work with AR-10/SR-25 platform rifles. Will not work with DPMS G II or Colt 901 rifles. Mil Spec Anodized Hard Coat Type III, Black.

P/N 762-60      L: 8.08", 1.5 oz.  
P/N 762-60D      Designed specifically for DPMS LR 308, L: 8.08", 1.55 oz.

# TACTICAL LATCH

The Tactical Latch is an extended charging handle latch developed to allow rapid operation of the charging handle with either hand while wearing gloves or during extreme weather conditions. The latch is perfect for flat top AR-15/M16/AR-10 series rifles that utilize scopes that limit access to a standard charging handle. The latch is made from 4140 Ordnance steel and parkerized with a Mil Spec finish.

The Tactical Latch is currently in service with MARSOC, US Navy SEALs, US Army Rangers and Special Forces as well as the DEA, FBI, Secret Service and hundreds of state and local law enforcement agencies.

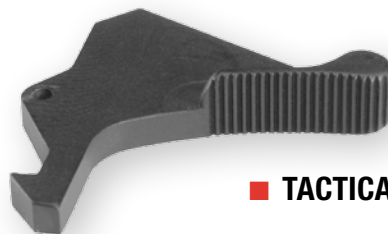


## ■ TACTICAL LATCH

For use with the M16/AR-15, AR-10 and SR-25 series rifles. Replaces the charging handle latch, allowing easy function of the rifle with either hand. A must for tactical or scoped flat top rifles. Made from 4140 steel. Manganese Phosphate Parkerized finish.

Charging handle not included.

P/N 249-02  
NSN 1005-01-523-7358



## ■ TACTICAL LATCH GEN II

A smaller profile Tactical Latch for AR series rifles. Allowing for easy operation of the charging handle with either hand. Made from 4140 Steel. Manganese Phosphate Parkerized finish.

Charging handle not included.

P/N 249-20



## ■ LEFT HAND CHARGING HANDLE

Using our patented ambidextrous design, we are able to offer a charging handle specifically for left hand shooters. Mil Spec charging handle.

Mil Spec Anodized Hard Coat Type III, Black.

Will not work with piston guns or .22 conversion units.

US Patent #7,240,600, #7,900,546

P/N 249-36 1.45 oz.

## ■ BADGER ORDNANCE TACTICAL CHARGING HANDLE

We now offer our Gen I Tactical Latch pre-installed in a Mil Spec charging handle, ready to drop into your AR platform. Charging handle is Mil Spec Anodized Hard Coat Type III, Black.

P/N 249-40 1.20 oz.

## ■ UNIVERSAL CHARGING HANDLE

Designed for competitive shooters or anyone that may need to shoot from transitional Right/Left hand positions. The Universal allows easy access to the charging handle from both sides of the rifle. Mil Spec charging handle. Will not work with piston guns or .22 conversion units.

Mil Spec Anodized Hard Coat Type III, Black.

US Patent #7,240,600, #7,900,546

P/N 249-38 1.74 oz.

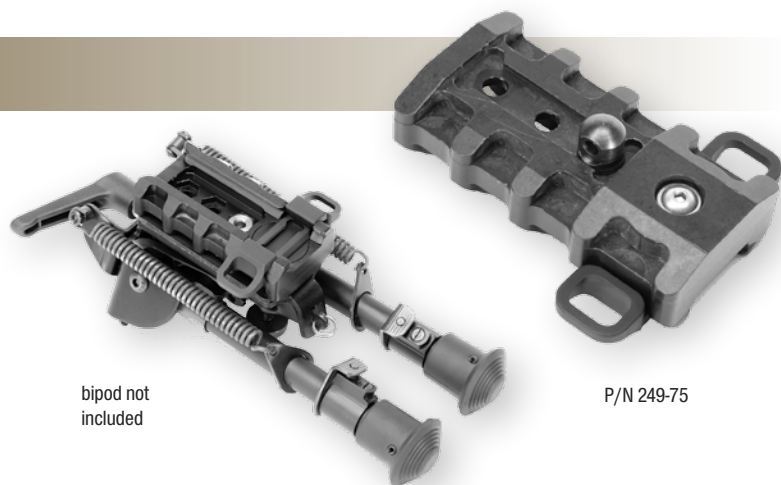
## BIPOD MOUNTS

### ■ BAR BIPOD RAIL

The Bipod Accessory Rail offers a solution for mounting a bipod using any MIL STD 1913 adapter system. The Bipod Rail is lightweight, manufactured from Mil Spec Aluminum alloy, featuring a non-rotating flush cup mounting point. Includes #10-32 mounting hardware.

Mil Spec Anodized Hard Coat Type III, Black.

P/N 306-60 L: 3.9", Screw spacing: 2.8", 1.4 oz.



bipod not included

P/N 249-75

### ■ TRAMP BIPOD MOUNT

The Badger Tactical Rapid Adjustable Mounting Point, or TRAMP, is a lightweight, quick attach bipod mounting solution for those who are in need of an easily installed MIL STD 1913 rail mounting option.

Manufactured from Delrin and Anodized Aluminum alloy components (Bipod not included).

P/N 249-75 (for Harris bipod), 1.67 oz.



P/N 306-60

# TACTICAL RIFLE

## AR SERIES RIFLE ACCESSORIES

### ■ CLAMP ON GAS MANIFOLD STAINLESS STEEL

Mk12 Style clamp on gas manifold is secured by two #6 socket head cap screws. Made from 416 Stainless steel.

Requires no gunsmithing.

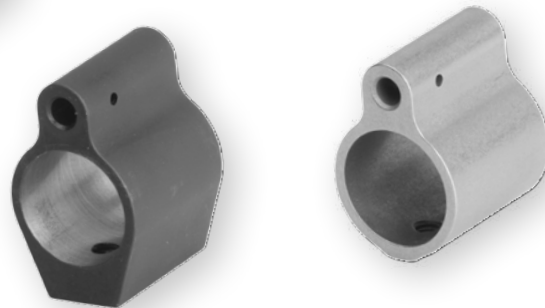
P/N 249-33 .75", 1.8 oz.  
P/N 249-34 .875", 1.9 oz.



### ■ TDX GAS MANIFOLD

TDX Gas Manifold is our smallest manifold and will fit under any free float handguard. Made from 416 Stainless steel and attaches with 2 Stainless set screws.

P/N 249-69 .75 Dia. barrel. Finish: Natural, 1.1 oz.  
P/N 249-70 .625 Dia. barrel. Finish: Natural, 0.85 oz.



### ■ MK 12 MOD 1 SPR/MK 18 MOD 1 GAS MANIFOLD

Issue Gas Manifold for the NAVSPEC Mk 12 Mod 1 SPR and Mk 18 Mod 1 carbine. Machined from heat treated 416 Stainless and Black Oxide finished.

P/N 249-30 .75" Dia., 1.9 oz., NAVSPEC Issue  
P/N 249-31 .875" Dia., 1.7 oz., Stainless steel, Mk 12 style



### ■ AR-15 UNIVERSAL SAFETY

The Universal Safety Selector can be installed in either right or left hand configuration, preventing selector obstruction for the left handed operator. The offhand side of the safety is marked with high visibility paint and is raised for both visual and tactile confirmation of selector position. The control side is high visibility marked as well, but retains the original GI configuration of the lever to maintain familiar dexterity. Machined from billet 4140 hardened steel. Manganese Phosphate Parkerized finish.

P/N 249-42 0.54 oz.



### ■ THE LEFT HAND SAFETY SELECTOR (FULL AUTO)

The LH Safety Selector is installed in a right side configuration, preventing selector obstruction for the left handed operator and is compatible with all Mil Spec select fire AR systems. The offhand side of the safety is marked with high visibility paint and is raised for both visual and tactile confirmation of selector position. The control side is high visibility marked as well, but retains the original GI configuration of the lever to maintain familiar dexterity. Machined from billet 4140 hardened steel. Manganese Phosphate Parkerized finish.

P/N 249-43

### ■ M7 FLASHLIGHT MOUNT

The M7 Scout flashlight mount is designed to work with Surefire M300 and M600 series flashlights as well as provide a semi rotational mounting point for QD push button sling swivels. This mount is designed specifically to work with laser aiming devices such as the ATPIAL/DBAL and all other issued aiming lasers. The mount allows clearance for the beams to operate without interference from the flashlight or the operator's hand. Aluminum. Mil Spec Anodized Hard Coat Type III, Black.

P/N 249-50 Disruptive Black, 1.27 oz.  
P/N 249-50FDE Flat Dark Earth, 1.27 oz.



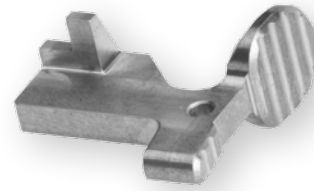
# TACTICAL TITANIUM SERIES

BECAUSE OUNCES MAKE POUNDS!

## ■ TITANIUM ENHANCED BOLT CATCH

Billet machined from grade 5 Titanium. Re-styled to give a larger target for rapid manipulation and angled to make it easier to engage and disengage after re-loads. Mil Spec Parkerized.

P/N 249-46 0.24 oz.



## ■ TITANIUM CASTLE NUT

Made to the exact same spec as a USGI nut, but made out of Grade 5 Titanium. Natural finish.

P/N 249-47 0.36 oz.



## ■ TITANIUM DUST COVER HINGE PIN

Made to the exact same spec as a USGI hinge pin, but made out of Grade 5 Titanium. Natural finish.

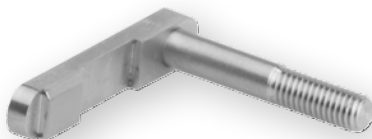
P/N 249-48 0.12 oz.



## ■ TITANIUM MAGAZINE CATCH

Made to the exact same spec as a USGI magazine catch, but made out of Grade 5 Titanium. Natural finish.

P/N 249-49 0.19 oz.



## ■ TITANIUM PISTOL GRIP SCREW

Grade 5 Titanium socket head cap screw. Star washer included. Natural finish.

P/N 249-55 0.8 oz.



## ■ AR RISER RAIL

AR Riser rail, allows the use of shorter rings and also allows greater latitude for scope placement. The rail is made so that a longer scope can be mounted further forward on AR-16/M16 style rifles. Rail has 22 MOA forward cant. Made from 7075 T6. Mil Spec Anodized Hard Coat Type III, Black.

P/N 249-25 H: 0.430", L: 5.375", 22 MOA cant, 2.9 oz.



## ■ ENHANCED BOLT CATCH

Billet machined from 4140 and hardened to 45-50 Rc. This catch will not break! Re-styled to give a larger target for rapid manipulation and angled to make it easier to engage and disengage after re-loads. Manganese Phosphate Parkerized finish.

P/N 249-44 0.38 oz.



# NIGHT VISION

## ■ SLICK - SNIPER LIGHTWEIGHT INTEGRATOR COMBAT KIT

Available to the General public for the first time, the SLICK is a complete modular Night Vision integration kit for the M151 Spotting scope (Leupold Mk 4).

The SLICK allows for the use of all current clip on Universal Night Vision and Thermal Sights. The SLICK's mounting cage provides 8 positions to mount NV, Lases/Illuminators or red dot sights. All the rails will allow the use of the RAPSTAR laser range finder as well as any other MIL STD 1913 mounted LRF.

All hardware needed to install and operate on your tripod is provided.

Mil Spec Anodized Hard Coat Type III, Black.

P/N 306-94 14.5 oz.

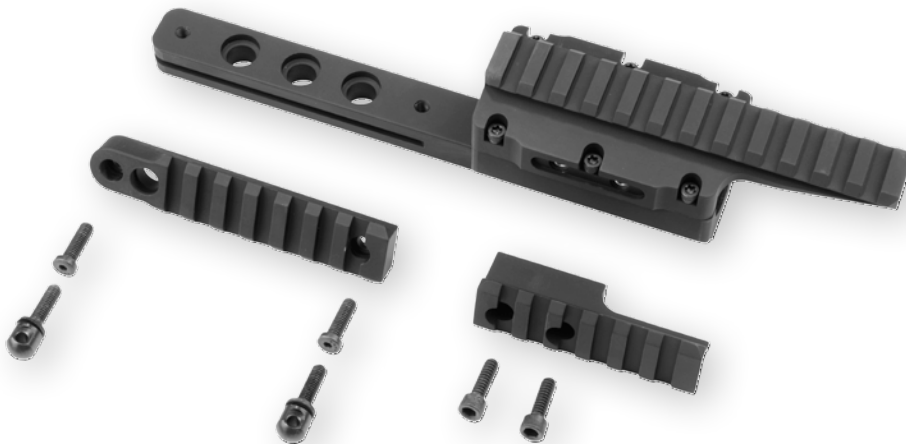


## ■ LIGHT RIFLE EMBEDDED FRONT RAIL

The Light Rifle Embedded Front Rail (LR-EFR) allows shooters with lightweight, narrow forend stocks the ability to embed a Night Vision integration system that will facilitate the use of clip on Night Vision devices. Max barrel diameter at tip of stock 1.15". Can be fitted with a bipod rail or sling swivel stud (included). Aluminum. Mil Spec Anodized Hard Coat Type III, Black.

Requires gunsmithing. Cannot be installed in plastic molded stocks.

P/N 306-87 14.4 oz. (main assembly weight, no side rail, no bottom rail)



## ■ SORIS - SNIPER/OBSERVER RAIL INTERFACE SYSTEM

Made for the Ziess Spotter 60 & 45 scopes.

The SORIS provides an inverted UNS mounting rail and 2 accessory rails that will fit any of the 5 mounting locations on the scope. Mil Spec Anodized Hard Coat Type III, Black.

P/N 600-01 L: 13.25" & 4.875", 9.4 oz



SORIS P/N 600-01



## ■ IMUNS - INTEGRATED MOUNT UNIVERSAL NIGHT SIGHT

Installs into any Accuracy International Chassis (except AS 50 & AX), replaces the current bipod mounting block and allows the use of clip on Night Vision devices such as the A/N PVS-22, A/N PVS-24, A/N PVS-27, or other devices such as thermal imagers or fusion devices. The IMUNS has a side accessory rail that allows the use of laser aiming devices such as the ATPIAL/DBAL and all other aiming lasers. The mount retains the bipod socket for the AI bipod and also allows for the use of a Harris style bipod. No permanent modification is required. Max barrel diameter at tip of stock 1.15", through-hole 1.2". Aluminum. Mil Spec Anodized Hard Coat Type III, Black.

P/N 310-10 12.0 oz.  
P/N 310-10-20 20 MOA cant, 12.0 oz.



## ■ IMUNS - C

The IMUNS - C (COVERT) installs into any Accuracy International Chassis (with the exception of the AS-50 and AX) replacing the current bipod mounting block and allows for the use of Night Vision devices such as the AN/PVS -22, 24, and 27. The Covert model is made to accommodate the Accuracy International Covert with integral sound suppressor. It will also accommodate larger profiled barrels, up to 1.375". It features a side accessory rail to attach laser aiming devices, such as the ATPIAL/DBAL. The IMUNS-C requires no permanent modification. Supplied with MIL STD 1913 bottom rail. Aluminum. Mil Spec Anodized Hard Coat Type III, Black.

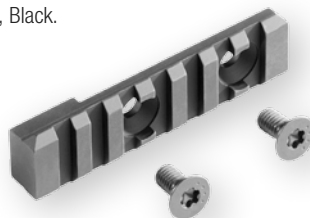
P/N 310-30 12.5 oz.



## ■ ILARK

IMUNS Lower Accessory Rail Kit replaces the Harris bipod mount on your Badger Ordnance IMUNS so you can mount MIL STD 1913 rail compatible bipods. Includes mounting hardware and wrench. Aluminum. Mil Spec Anodized Hard Coat Type III, Black.

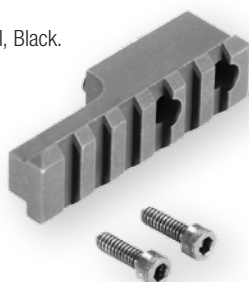
P/N 310-11 1.28 oz.



## ■ EFR/IMNUS ACCESSORY RAIL

The EFR and IMUNS both include one side accessory rail, but for applications that require an additional side rail, we offer them individually. Includes necessary mounting hardware. Mil Spec Anodized Hard Coat Type III, Black.

P/N 306-59-3 1.48 oz.



## ■ EFR - EMBEDDED FRONT RAIL

Allows the use of a universal Night Vision device (A/N PVS-22) on virtually any tactical rifle stock. This mount is bedded into the forend of the rifle stock and allows for up to 7" of rail space due to its reversible top rail. Aluminum. Mil Spec Anodized Hard Coat Type III, Black.

Requires gunsmithing.

P/N 306-59 7.4 oz.



## ■ CO-AXIAL LASER RANGE FINDER MOUNT

Designed for the next generation of weapons mounted Laser Range Finders.

The Co-Axial Range Finder Mount (CRF) allows the range finder to be mounted to any day optic. Designed for 34 mm scopes, Badger ring reducers can be used to fit 30 mm scopes, Aluminum. Mil Spec Anodized Hard Coat Type III, Black.

P/N 306-32	34 mm fits Badger 6 screw rings, 3.3 oz.
P/N 306-32B	34 mm bottom adapter, allows the use on any 34 mm scope regardless of rings used, 0.3 oz. Sold separately.
P/N 306-145	35 mm Badger 4 screw rings and Unimount, 2.7 oz.
P/N 306-155	34 mm Badger 4 screw rings and Unimount, 2.9 oz.
P/N 306-165	30 mm Badger 4 screw rings and Unimount, 2.6 oz.

306-32



306-55

306-32B

SOLD SEPARATELY



## ■ SLAM - SIDE LASER AIMING MOUNT

Designed for the Mk 15 and M107 sniper rifles. This mount is designed specifically to work with laser aiming devices such as the ATPIAL/DBAL and all other aiming lasers. Simply mounts to any open space on the top rail that is 4 slots wide. Aluminum. Mil Spec Anodized Hard Coat Type III, Black.

P/N 306-107      2.4 oz.



## ■ SNAP – SCOPE, NIGHT VISION ADAPTER, POCKET

The SNAP (Scope, Nightvision Adapter, Pocket) easily fits any A/N PVS-14 to the rear of the M151 Spotting Scope (Leupold 12-40x60 mm). Installs/Removes in about 5 seconds without any tools. The SNAP allows the spotting scope to be powered up to 40x without degradation of the image. An issue LIF (Laser Interference Filter) can be used on the A/N PVS-14 to protect the observer from a stray laser. Aluminum. Mil Spec Anodized Hard Coat Type III, Black.

P/N 306-88      D: 1.98", L: 1.96", 2.23 oz.

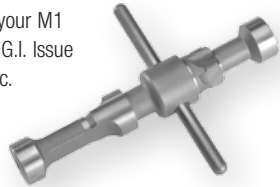
# ARMORERS TOOLS

## M1 GARAND TOOLS

### ■ M1 GARAND GAS CYLINDER GAGE

This gage allows you to determine the quality of your M1 rifles gas cylinder. Made to the exact spec of the G.I. Issue gage. Made from tool steel and hardened to 60Rc.

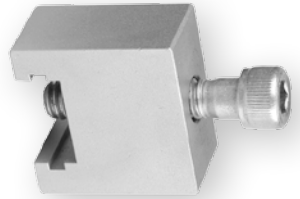
P/N 222-05



### ■ GAS CYLINDER PLUG VALVE FIXTURE

For use with the M1 rifle. Used to hold valve open to clean or for refinishing.

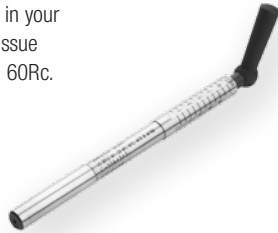
P/N 222-03



### ■ M1 GARAND THROAT EROSION GAGE

This tool allows you to gage the throat wear in your M1 rifle. Made to the exact spec of the G.I. Issue gage. Made from tool steel and hardened to 60Rc.

P/N 222-07



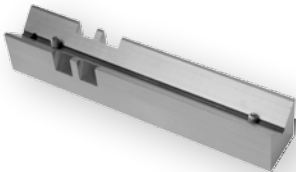
### ■ TIMING GAGE

For use with the M1 rifle. Used to gage bolt release timing. This is an exact duplicate of the US Army WW2 issue gage.

P/N 222-04



## M700 REMINGTON TOOLS



### ■ REMINGTON ACTION V-BLOCK

Use this precision ground block when you are using piloted tooling to re-thread the receiver, lap the lugs, open the mounting holes or are doing any type of mill work. Made from 4140 and hardened to 60Rc.

P/N 306-65

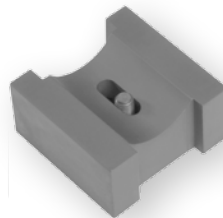
### ■ CHAMBERING GAGE

This tool allows bullet proof chambering of rifle barrels.

Comes complete with a dial indicator and instructions. Removes the guess work and inconsistency of using a regular depth gage. Reads directly to the exact number you need. United States Patent #5,170,169.

P/N 200-11  
P/N 200-13

Remington M700  
M2008/M2013 & M16



### ■ RECOIL LUG ALIGNMENT FIXTURE

Aligns recoil lug properly when installing barrel. Works with Chandler/Badger Ordnance Recoil Lug, also works with standard Remington recoil lug, Dakota Arms M97 Hunter and the Beretta Mato.

P/N 306-04

### ■ DEAD LEVEL

The Dead Level is the most simple and accurate way to level your scopes reticle for maximum performance at extended ranges.

Simply attach your scope and rings to the Dead Level, level the device with the precision thumbscrews to center up the bulls-eye level. Then just look out a door or window to the edge of a building, level line or a plumb bob. Then align the cross hairs, tighten the ring caps and check it one more time.

Instructions included. Aluminum, Mil Spec Anodized Hard Coat Type III, Black.

**FOR USE WITH MIL STD 1913 COMPLIANT RINGS AND UNIMOUNTS.**

P/N 200-50

24.5 oz.



### ■ FIRING PIN PROTRUSION GAGE

Check the exact length of your firing pins protrusion with this direct reading gage. Comes complete with a dial indicator and instructions.

P/N 200-12

All calibers .223 and up



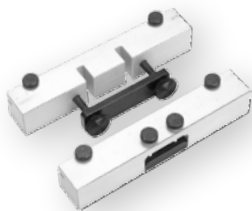
# ARMORERS TOOLS

## M1 GARAND, M14/M1A RIFLE TOOLS AND PARTS

### ■ RECEIVER/ BARREL TIMING GAGE

For use with the M1, M14/M1A rifles. Used with two 12" or longer steel rules or a precision level (not included).

P/N 200-01



### ■ GAS CYLINDER ALIGNMENT GAGE

For use with the M14/M1A rifle. Used to check alignment of gas cylinder to gas port in barrel.

P/N 223-02



### ■ HANDGUARD CLIP PLIERS

For use with the M1, M14/M1A rifles. Used to remove and install the handguard clip.

P/N 200-05



### ■ BOLT ROLLER GREASER

For use with the M14/M1A rifle. Used to grease the bolt roller. Fits in buttstock with other cleaning equipment.

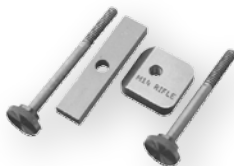
P/N 223-03



### ■ BEDDING FIXTURE

For use with the M1, M14/M1A rifles. Used with your standard bedding tools for single or double stage bedding (not included).

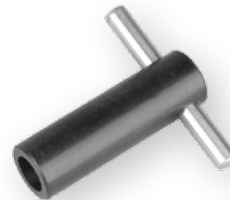
P/N 200-06



### ■ BOLT ROLLER OPERATOR TOOL ARMORER'S VERSION

For use with the M14/M1A rifle. Used to grease the bolt roller. T-handle for high volume use.

P/N 223-03A



## M16, M4, AR-15 AR-10 TOOLS

### ■ REAR SIGHT INSTALLATION TOOL

For use with the M16A2/AR-15A2 rifles. Used to install A2 style adjustable rear sights.

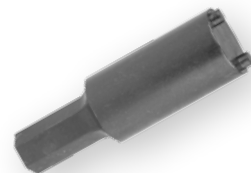
P/N 249-01



### ■ STOCK LINER SCREW WRENCH

Used to install or remove stock liner screws. Fits a magnetic tip screwdriver with 1/4" Hex Drive or a socket wrench.

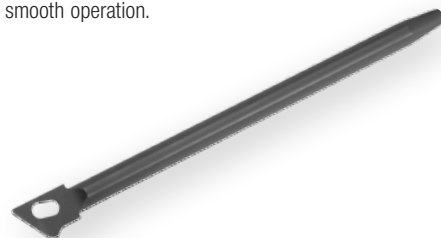
P/N 223-04



### ■ M14/M1A NATIONAL MATCH OPERATING ROD SPRING GUIDE

Made from 1 piece of pre-hard 4142 Ordnance steel. The body of the guide is fluted to reduce contact with the spring while giving absolutely smooth operation.

P/N 223-05





# M2013 RIFLE ACTION

## BECAUSE YOU DESERVE THE BEST ACTION!

### Caliber:

- Short action: Standard based calibers
- Short action: Short Magnum based calibers
- Long action: Winchester Magnum and Lapua Magnum based calibers.

**Length:** 8.84" S/A, 9.55" L/A

**Width:** 1.27"

**Height:** 1.5"

**Weight:** Short action 2 lbs 5.7 oz., Long action 2 lbs 12.5 oz.

**Number of Bolt lugs:** 6 on a 3 lug pattern

**Bolt Dia:** .78"

**Bolt lift:** 60°

**Barrel Thread:** 1 1/16" X 16 3A, 1.37" long

**Trigger:** Can use any Remington M700 style trigger.

**Triggerguard:** Uses any Remington M700 detachable box magazine system.

**Stock:** McMillan Fiberglass and Manners Composite are both making stocks for this receiver, however this receiver can be installed into almost any Remington compatible stock.

Can be fit into the Accuracy International AICS and AX chassis, and the KRG Whiskey3/X-Ray chassis.

The M2013 is based on the proven M2008 with a few key upgrades.

- Lighter, faster firing pin.
- Improved extraction cam for lighter bolt lift.
- New styling for weight reduction.
- Can use Accuracy International AICS or AW magazines (not interchangeably).
- 4143 Steel receiver for a lifetime of bullet proof operation.
- Bolt hole honed to 16 RMS for smooth operation.
- Modified M16 style extractor cannot pull out because of hard extraction.
- Bolt locks into the receiver using a breeching ring, which is trapped between the barrel and the receiver.
- Breeching ring is made from precipitation hardend corrosion resistant steel.
- Full length Aluminum MIL STD 1913 20 MOA Rail (Picatinny) held on with 4 #8-40 screws and 2 recoil pins.
- Toolless firing pin disassembly.

P/N 100-20 Short Action Standard Calibers  
P/N 100-30 Short Magnum Calibers

P/N 100-40 Long Action Winchester Magnum Calibers  
P/N 100-50 Lapua Magnum CIP length Calibers



## RESELLERS

### Triad Tactical, Inc.

Po Box 171492  
Kansas City, KS 66117-1492  
Phone: (913) 669-8553  
Fax: (913) 400-7374  
steve@triadtactical.com  
www.triadtactical.com

### Brownell's

200 South Front Street,  
Montezuma, IA 50171  
Phone: (641) 623-4000  
buying@brownells.com  
www.brownells.com

### Midway USA

5875 W. Van Horn Tavern Rd,  
Columbia, MO 65203  
Phone: (800) 243-3220  
customerservice@midwayusa.com  
www.midwayusa.com

### Euro Optics, LTD

439 Crawford Alley  
Montoursville, PA 17754  
Phone: (570) 220-3159  
Fax: (570) 368-3923  
alex@eurooptic.com  
www.eurooptic.com

### RSR Group

4405 Metric Dr.  
Winter Park, FL 32794  
Phone: (800) 541-4867  
Fax: (407) 677-4489  
salesfl@rsrgroup.com  
www.rsrgroup.com  
**S.W.F.A.**

420 Century Way, #100,  
Red Oak, TX 75154  
Phone: (972) 223-0500  
swfa@riflescopes.com  
www.riflescopes.com

### U.S. Tactical Supply

939 Pacific Blvd,  
Albany OR 97321  
Phone: (541) 928-8645  
kevin@ustacticalsupply.com  
www.ustacticalsupply.com  
GSA Contract GS-07F-0259N

### Sniper Country PX

3103 Pruss Hill Rd  
Pottstown, PA 19464  
Phone: (610) 323-6543  
Phone: (610) 323-5336  
sales@snipercountrypx.com  
www.snipercountrypx.com

### Mile High Shooting Accessories

3731 Monarch St Erie, Co 80516  
Toll Free: (877) 871-9990  
Fax: (303) 254-6572  
info@milehighshooting.com  
www.milehighshooting.com

## ■ CANADA

### Wolverine Supplies

Box 729  
NE 5-11-25  
Virden, Manitoba R0M 2C0, Canada  
Phone: (204) 748-2454  
Fax: (204) 748-1805  
www.wolverinesupplies.com  
sales@wolverinesupplies.com



**MADE IN AMERICA**

## EXPORT PARTNERS



**SIMMONS**  
Global Solutions, Inc.

phone: 816-347-8017 • toll free: 877-SLE-4777  
e-mail: cory@simmonsle.com



**Rally Point**  
Tactical

phone: 757-963-0742 • e-mail: esales@rptactical.com

## TRAINING AFFILIATES



**TAC PR**  
SHOOTING CENTER



### Badger Ordnance

1209 Swift St.  
N. Kansas City, MO. 64116

phone: 816 421-4956  
fax: 816 421-4958  
web: [www.badgerOrdnance.com](http://www.badgerOrdnance.com)  
e-mail: [info@badgerOrdnance.com](mailto:info@badgerOrdnance.com)