



FOXTROT365™

P365® PISTOL WEAPON LIGHT

OWNERS MANUAL



This manual is available in the following languages: French, Spanish, German, Italian, Portuguese, Russian, Afrikaans, Swedish, and Norwegian. Please visit sigsauer.com for Owners Manual downloads.

INTRODUCTION:

The FOXTROT365™ Pistol Weapon Light combines an intuitive white light solution in a sleek package for self defense, conceal carry and home defense. The FOXTROT365™ is compatible with SIG P365® pistols.

The FOXTROT365™ is covered by the SIG SAUER Electro-Optics Infinite Guarantee and Electronics & Tritium Component Limited 5-Year Warranty.

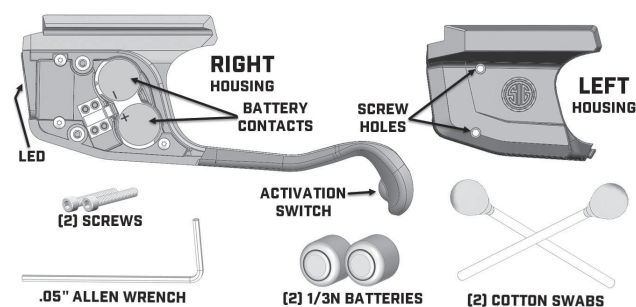
KEY FEATURES:

- Compact & lightweight 100 lumen Pistol Weapon Light
- Instant activation with grip module tact switch
- Precision engineered to fit SIG P365®

CONTENTS:

- FOXTROT365™ Pistol Weapon Light
- .05" Allen Wrench
- (2) Assembly Screws
- (2) Cotton Swabs
- (2) CR 1/3N Batteries
- Owners Manual

PARTS IDENTIFICATION:

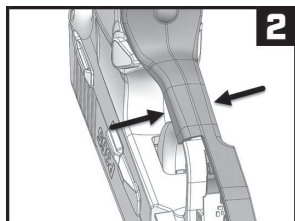
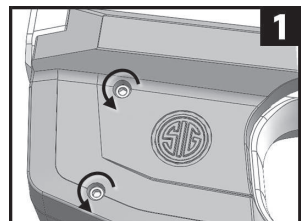


IMPORTANT:

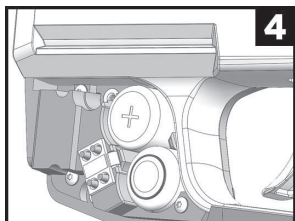
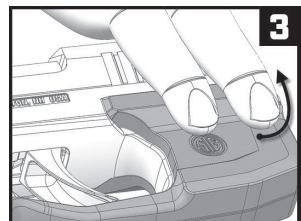
Prior to installation, battery change, cleaning or maintenance, follow the SIG P365® operator's manual to ensure the firearm is unloaded and pointed in a safe direction.

INSTALLATION:

1. Uninstall (2) **screws**, remove **left housing** and set aside (Fig 1).
2. Center rear portion of **right housing** on pistol trigger guard as shown (Fig 2).

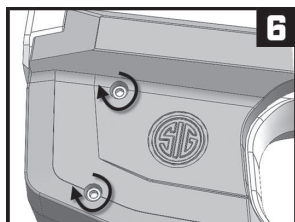
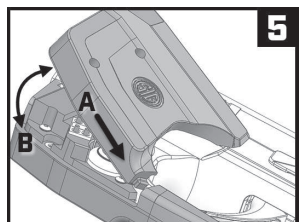


3. Pull up and snap **right housing** firmly into proprietary grip module rail (Fig 3).
4. Insert (2) **1/3N Batteries** into **right housing**. Top battery should show positive end (+) facing outwards, while bottom battery shows negative end (-) (Fig 4).



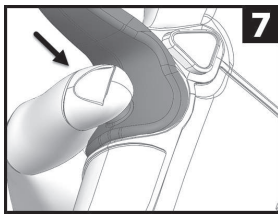
5. Insert rear portion (A) of **left housing** into **right housing** at 30° angle (Fig 5). Mate **left housing** (B) to **right housing**.

6. Install (2) **mounting screws** into **left housing** with **.05" allen wrench**. Squeeze both sides together tightly. **Next, tighten each mounting screw** until secure (Fig 6). Do not over-tighten as this may damage housing.



OPERATION:

1. To turn light on, depress **activation switch** as grip is tightened on the pistol (Fig 7). Reduce grip pressure to turn light off.



BATTERY REPLACEMENT:

1. Follow Step 1 of the INSTALLATION section. Leave **right housing** mounted to trigger guard.
2. Pull expended **1/3N Lithium batteries** from **right housing**.
3. Follow Steps 4-6 of the INSTALLATION section.

CLEANING & MAINTENANCE:

After repeated fire, the lens may become clouded with gunpowder residue. For best results, it is recommended that this area be cleaned, along with the firearm, after each use. To clean the lens, follow these steps:

1. Keep firearm pointed in a safe direction
2. Ensure firearm is unloaded
3. Confirm light is off
4. Dampen the end of a cotton swab with isopropyl alcohol
5. Apply dampened swab to lens and polish in a small circular pattern. Be sure to clean around lens edge

Firearm should be cleaned and lubricated exactly as directed in your SIG SAUER P365® owner's manual. Excess lubrication can interfere with the proper function of both firearm and FOXTROT365™ Pistol Weapon Light. The FOXTROT365™ Pistol Weapon Light should never be submerged or flushed with cleaning solvents.

FOXTROT365 SPECIFICATIONS

Dimensions	3.8" L x 1.0" W x 1.9" H
Weight	1.3 oz with (2) 1/3N installed
Lumen Rating	100
Battery	(2) CR 1/3N Lithium
Activation Switch Type	Momentary On/Off
Water Resistance	IPX4



SIG SAUER Electro-Optics Infinite Guarantee™

SIG SAUER has manufactured the most rugged, dependable high-performance firearms for over two centuries. Our heritage of design, engineering and precision-manufactured quality predates the existence of any other optics company worldwide. We understand the importance of quality in the line of fire, at the shooting range or on your next hunt. SIG SAUER Electro-Optics had to earn the right to wear that badge and the Infinite Guarantee has your back, forever. Period.

We will repair or replace your SIG SAUER product in the event it becomes damaged or defective, at no charge to you. If we cannot repair your product, we will replace it with a product in perfect working order of equal or better physical condition. It doesn't matter how it happened, whose fault it was, or where you purchased it.

SIG SAUER Infinite Guarantee™

- Unlimited Lifetime Guarantee
- No Receipt Required
- Fully Transferable
- No Time Limit Applies
- No Warranty Card Required
- No Charge

If you ever have a problem, no matter the cause, we promise to take care of you when it counts. Please note that our Infinite Guarantee does not provide coverage for intentional damage, misuse, cosmetic damage that does not affect the performance of the optic, loss, theft or unauthorized repair or modification. Excludes electronic components.



SIG SAUER Electronic & Tritium Component Limited 5-Year Warranty

For components not included under the SIG SAUER® Infinite Guarantee™, this warranty covers any defects in materials and workmanship in the electronic and Tritium components of illuminated riflescopes/sights, pistol sights, electronic sights, flashlights, lasers, binoculars, spotting scopes, and rangefinders. This warranty lasts for five years from the date of manufacture. If, during that five-year period, these products are found to have electronic or Tritium component defects in materials or workmanship, SIG SAUER will repair your product, at no charge to you. If we cannot repair your product, we will replace it with a product in perfect working order of equal or better physical condition.

**FOR PRODUCT SERVICE ON THIS MODEL,
PLEASE CALL 603-610-3000**
27100 SW Parkway Ave.
Wilsonville, OR 97070 USA

SIG SAUER
NEVER SETTLE