



**2017 TRIJICON[®]
ELECTRO OPTICS DIVISION**

BRILLIANT THERMAL SYSTEMS



> TAKE ON THE NIGHT.

Trijicon® has led the industry in the development of superior any-light aiming systems since the company's founding in 1981. And now, we lead the industry in no-light aiming systems. Trijicon's advanced thermal imaging riflescopes are trusted by the most demanding shooters around the world to get the job done with accuracy and speed no matter what. No matter when.

Choose from industry-leading thermal imaging monoculars, helmet sights, weapon sights and clip-on sights. Conquer darkness with Trijicon.



> TABLE OF CONTENTS

- 4** Trijicon® Thermal Technology
- 8** IR-PATROL™ Thermal Monocular
- 14** IR-PATROL™ LE100/LE100C Handheld Model
- 16** IR-PATROL™ M250XR Extended Range Monocular
- 18** IR-PATROL™ M250 Helmet-Mounted Model
- 20** IR-PATROL™ M300W Rifle-Mounted Model
- 28** IR-HUNTER® Thermal Weapon Rifle Scope
- 34** IR-HUNTER® MK2 20mm
- 36** IR-HUNTER® MK2 35mm
- 38** IR-HUNTER® MK3 35mm
- 40** IR-HUNTER® MK3 60mm
- 48** SNIPE-IR™ Clip-On Thermal Scope
- 54** REAP-IR™ Mini-Thermal Rifle Scope
- 58** Export Controls



> SUPERIOR THERMAL IMAGING TECHNOLOGY

Thermal imaging does not collect light like image intensification (I²) systems, the most common night vision technology on the market. Instead, thermal technology captures the heat emitted from objects and persons for superior clarity and detection.

Be aware: not all thermal imaging is created equal. Many thermal systems offer 17 micron technology and upscale or downscale their imagery, which creates a significant loss of detail. Trijicon® thermal optics utilize the MicroIR™ thermal core, featuring a 12 micron detector and clean 640x480 imagery at 60 Hz frame rate. See the difference for yourself.

COMPETITOR

TRIJICON®



Holding A Stick 320x240 vs. 640x480



Holding A Gun 320x240 vs. 640x480

COMPETITOR

TRIJICON®



17 MICRON vs. 12 MICRON



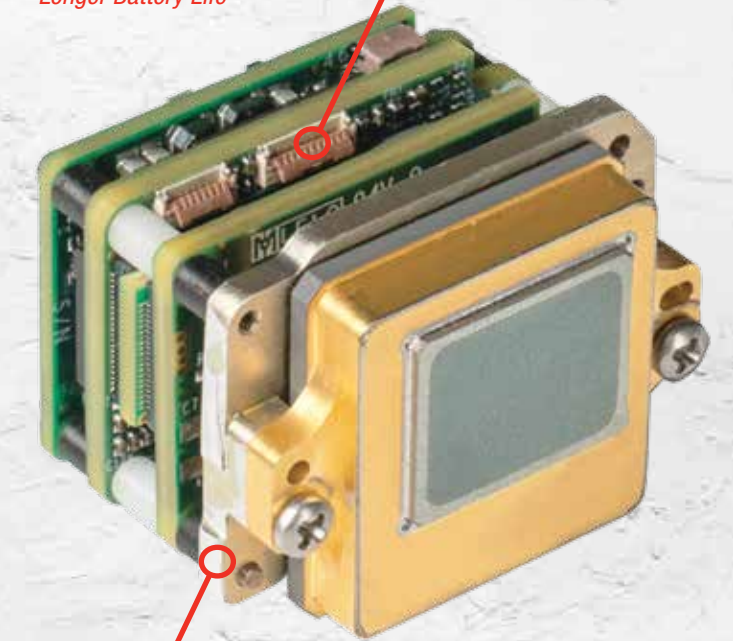
17 MICRON vs. 12 MICRON

THERMAL SENSOR

Trijicon® thermal optics utilize a MicroIR™ thermal core that features a 12 micron detector to deliver high performance, clean 640x480 imagery at an outstanding 60 Hz frame rate.

- > 12 Micron
- > LWIR (Long Wave Infra-Red)
- > Uncooled Technology
- > 60 Hz High-Speed Frame Rate
- > VOx (Vanadium Oxide)

*Miniaturized Circuitry
Longer Battery Life*



*Integral Heat Sync
For Thermal Stability*



ADVANCED POLARITY CONTROL



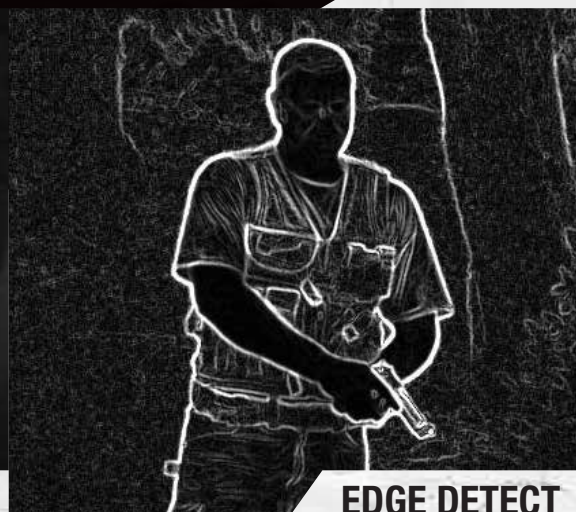
Most thermal sights give you only one choice for black hot/white hot, which are commonly referred to as polarity. Trijicon® thermal optics come with MaxPol technology for maximum multi-polarity control. This feature gives you three modes of white hot and three modes of black hot so you can identify your targets in most any condition. Plus, Trijicon offers EDGE DETECT Mode, which is an entirely new way to view your target with more precision. It is a fraction of the brightness of other modes, so your eyes are not as prone to night blindness from the screen.



BLACK HOT



WHITE HOT



EDGE DETECT

All images are taken with the IR-HUNTER® and IR-PATROL™ systems.

MADE IN AMERICA. WITH PRIDE.

It's not always convenient or financially beneficial to build such technologically advanced optics in America. But we're an American company, and our products are built by shooters, for shooters right here in the U.S. (Auburn, California, and Wixom, Michigan, to be specific). We wouldn't have it any other way.



CONSTRUCTED TO MIL-STD-810G RATINGS

Every Trijicon® thermal system is built rugged, tough and with MIL-STD-810G standards. They're built to withstand low temperatures, high temperatures, rain, humidity, sand, dust, vibrations and shock.



TRIJICON
IR-PATROL™
THERMAL MONOCULAR

➤ THE MULTIPURPOSE, HIGH-PERFORMANCE THERMAL IMAGING MONOCULAR

Whether your mission is searching for a suspect or securing your position, the Trijicon IR-PATROL™ is the ideal multipurpose thermal imaging monocular. It's compact, lightweight and rugged. And it offers some of the most advanced performance options on the market for a clear, sharp image. Choose from handheld, helmet-mounted or rifle-mounted IR-PATROL systems.



➤ THE DIFFERENCE BETWEEN IDENTIFICATION AND UNCERTAINTY.

High-resolution thermal imagery is an absolute necessity for law enforcement and military personnel. The difference between night vision and thermal imagery is the difference between successful observation and failure. At the heart of the Trijicon IR-PATROL™ is a MicroIR™ 640x480 12 micron thermal core, which provides users one of the most crisp, detailed images available in a handheld thermal device—and offers a 42% increase in magnification over 17 micron sensors using the same optics.



Image taken with 3rd Gen Image Intensified

Image taken with IR-PATROL M250

Image taken with IR-PATROL



TRIJICON IR-PATROL™ THERMAL MONOCULAR

MODULAR BY DESIGN

With the Trijicon IR-PATROL™, you can choose from handheld, helmet-mounted or weapon-mounted systems. And if you already have a day optic sighted in, the IR-PATROL can be placed in front and used as a clip-on device for 24-hour tactical usage.

SENSOR TYPE

Uncooled VOx LWIR

THERMAL SENSITIVITY

<50mk

SENSOR RESOLUTION

640x480 Pixels

SENSOR PITCH

12 Micron

FRAME RATE

60 Hz M250/M300W
30 Hz LE100/LE100C

SPECTRAL RESPONSE

8 – 12 Microns

DISPLAY TYPE

Monochrome Digital OLED

DISPLAY RESOLUTION

640x480 Pixels

BASIC FEATURES

E-Zoom, Polarity, DFC

ADVANCED FEATURES

DCE – Digital Contrast Enhancement
Edge Detection Mode

START-UP TIME

Approx. 5 Seconds

VIDEO OUTPUT

Analog RS-170 (with Optional Cable)

BATTERY TYPE

1 x CR123 3 volt
2 x with adapter

BATTERY LIFE

1.5 Hours @ 60 Hz – 1 batt.
3.5 Hours @ 60 Hz – 2 batt.

HELMET MOUNT

Used with Model M250 and M300W
Part No. IRDMNT-9974

WEAPON MOUNT

Used with Model M300W
Part No. IRDMNT-9971

WEIGHT

LE100/LE100C/M250/M300W: 16 oz (454g)
M250XR: 27.2 oz (771g)

DIMENSIONS

5.95" L x 2.0" H x 2.95" W
LE100/LE100C

DIOPTER

-6/+2

EYE RELIEF

27mm

ENVIRONMENTAL

-40c to +55c Operating
-45c to +75c Storage

HANDHELD SYSTEM

LE100, LE100C & M250XR



The IR-PATROL™ offers a high-performance thermal core, along with the industry-leading 640x480 VGA OLED Micro Display, to give the user optimal detection capabilities and clear, detailed imagery they can trust to conquer darkness.

HELMET SYSTEM

M250



The M250 comes with an integrated Wilcox® shoe interface for use with numerous Wilcox mounting solutions. When helmet mounted with a Wilcox G24 mount, the IR-PATROL™ M250 provides a tactical advantage for both law enforcement and military users.

RIFLE SYSTEM

M300W



The IR-PATROL™ M300W is a mini rifle-mountable system that works as a dedicated or clip-on thermal rifle sight. When not in use, the optional Wilcox® Side Flip mount conveniently flips the IR-PATROL M300W out of the way for zero obstruction.

MODELS

MODEL	FRAME RATE	POLARITY/ZOOM	IMAGE CAPTURE	EDGE DETECT	VIDEO OUT	RETICLE FEATURE
IRMO-100	30 Hz	x				
IRMO-100C	30 Hz	x	x			
IRMO-250	60 Hz	x	x	x	x	
IRMO-250XR	60 Hz	x	x	x	x	
IRMO-300	60 Hz	x	x	x	x	x

LE100 & LE100C



Optional 2x and 3x Magnifiers



IR-PATROL™ with Download Cable

LE100 HANDHELD MODEL

- > 640x480 High Performance
- > Advanced Thumbstick Controller
- > Ruggedized System Design
- > Full Digital Display
- > Objective Lens Cap



LE100C IMAGE CAPTURE MODEL

Laser/Illuminator Weapon Light Not Included



Integrated Accessory Rail
Built-In Mini-Picatinny Rail

MIL Spec Construction
6061-T6 Aluminum Housing

Thumbstick Controller
Intuitive User Interface

Manual Focus Lens
Objective Lens with Manual Focus

TRIJICON IR-PATROL™ THERMAL MONOCULAR

M250XR

M250XR EXTENDED RANGE

- > 7° FOV 4.5x Magnification
- > Stadiametric Rangefinder
- > 640x480 Thermal Sensor
- > Image Capture



Tripod Not Included



Tripod Interface
Included

Manual Focus Lens
Smooth Manual Focus for Fast Targeting

Long-Range Surveillance
60mm Lens for Mile+ Detection

Thumbstick Controller
Intuitive User Interface

MIL Spec Construction
6061-T6 Aluminum Housing

Integrated Accessory Rail
Built-In Mini-Picatinny Rail

TRIJICON
IR-PATROL™
 THERMAL MONOCULAR

M250



M250 HELMET-MOUNTED

- > Wilcox® Interface Shoe
- > 60 Hz High-Speed Frame Rate
- > Edge Detect Mode
- > Lightweight Design
- > Objective Lens Cap

M250-K HELMET-MOUNTED KIT

- > IR-PATROL™ 640x480 Thermal Monocular
- > Wilcox Interface Shoe
- > Wilcox Helmet-Mount Interface Kit
- > 60 Hz High-Speed Frame-Rate Download/Video Cable
- > Manual



Helmet not included.

Multiple Adjustments
Interpupillary/Height/Tilt

Thumbstick Controller
Intuitive User Interface

Optional Helmet Interface
Wilcox® Side Mount

Optional Helmet Mount
Wilcox® G24 Helmet Mount

TRIJICON
IR-PATROL™
THERMAL MONOCULAR

M300W

M300W RIFLE-MOUNTED

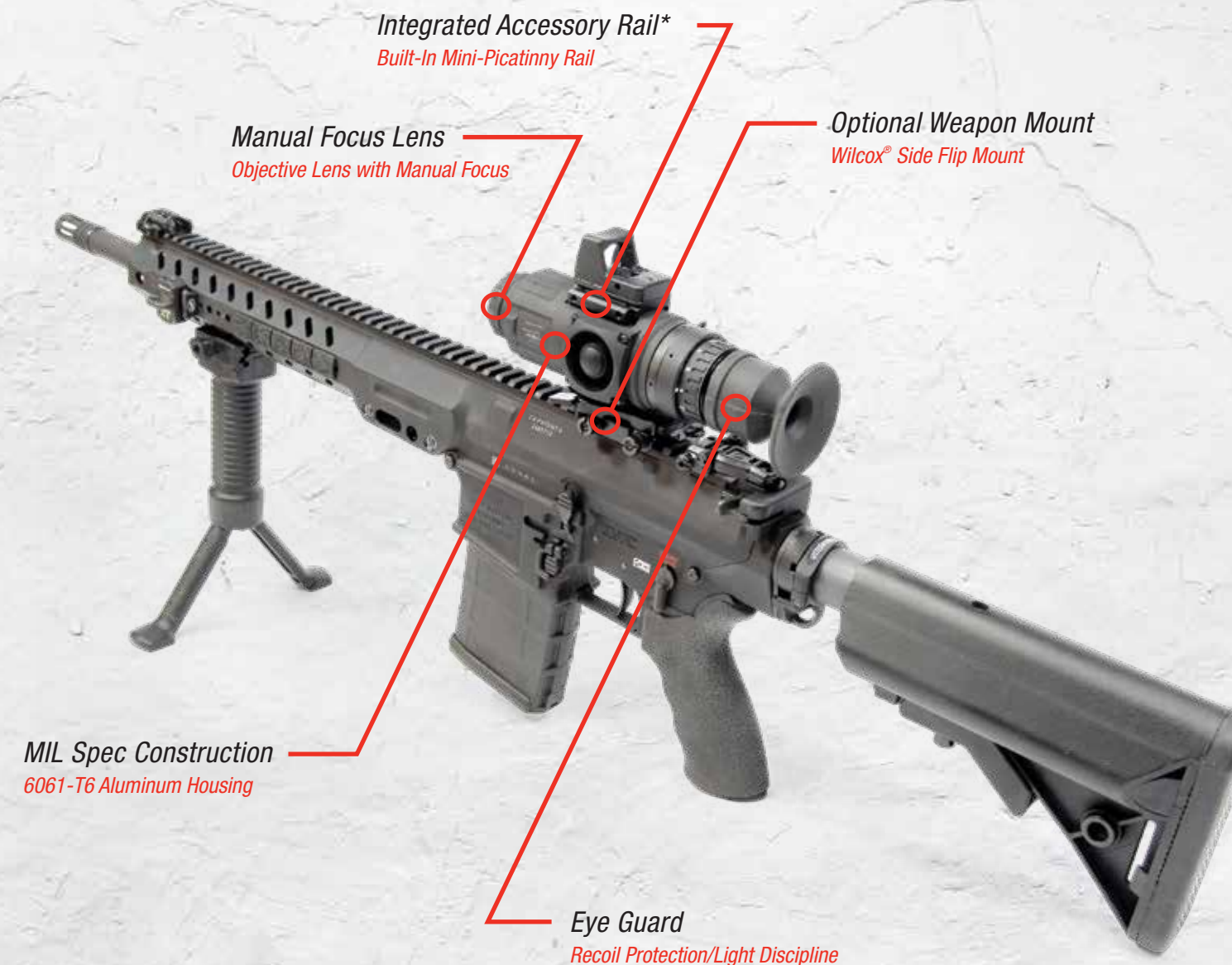
- > Fully Adjustable Reticle System
- > Clip-On Mode Included
- > Optional Wilcox® Side Flip Mount
- > Mini Thermal Rifle Sight
- > Objective Lens Cap

M300W-K RIFLE-MOUNTED KIT

Wilcox®

- > IR-PATROL™ 640x480 Thermal Monocular
- > Reticle System (with Clip-On mode)
- > Wilcox Interface Shoe
- > Wilcox Flip Mount Rifle Base
- > 60 Hz High-Speed Frame-Rate
- > Download/Video Cable

Side Flip Mount Pictured



*RMR Not Included

TRIJICON
IR-PATROL™
THERMAL MONOCULAR

BRIDGE ASSEMBLIES & MOUNTS

SINGLE- AND DUAL-BRIDGE ASSEMBLIES & MOUNTS BY **WILCOX**



BRIDGES

The bridge adaptor provides the operator with a helmet-mounted, hands-free solution for the IR-PATROL™. Ideal for surveillance and overwatch situations, this adaptor adds versatility, giving the end user an optimal mounting solution.

HELMET MOUNTS

The Wilcox® L4 G41 Low Profile Breakaway Mount allows firm attachment of a variety of NVGs to MICH/ACH and ECH helmets, using a one- or three-hole Hybrid Shroud. This NVG mounting system allows the mount to “break-away” from the base under stressed conditions. The Wilcox L4 G41 option features a Wilcox Hybrid shroud and provides easy attachment of the mount to any helmet drilled with a standard one- or three-hole configuration.

FLIP MOUNT

The mount is designed to flip out of the way when not in use and return to zero when back in operational mode. These are lightweight, with a field-proven dovetail attachment system, and are made of high-grade aluminum construction for increased durability over currently fielded products.



➤ ACCESSORY ITEMS

TACTICAL ADD-ONS



Battery Extender

Battery Extender: The Battery Extender lets the IR-PATROL™ double its run time by utilizing two batteries instead of one.

Download/Video Cable: The Download/Video Cable lets you use the “video out” option of the M250 and M300W, and the “image download” capabilities of the LE100C, M250 and M300W. The image download feature requires included PC software.

Amber Filter: The Amber Filter helps reduce eye fatigue when using the system for long periods of time.



Amber Filter



Download Cable



IR-PATROL™
THERMAL MONOCULAR



SYSTEM	IR-PATROL™ LE100	IR-PATROL™ LE100C	IR-PATROL™ M250XR	IR-PATROL™ M250	IR-PATROL™ M250 Kit
SENSOR RESOLUTION	640x480	640x480	640x480	640x480	640x480
SENSOR MICRON	MicroIR 12	MicroIR 12	MicroIR 12	MicroIR 12	MicroIR 12
SENSOR TYPE	VOx Vanadium-Oxide	VOx Vanadium-Oxide	VOx Vanadium-Oxide	VOx Vanadium-Oxide	VOx Vanadium-Oxide
FIELD OF VIEW	22°	22°	7°	22°	22°
MAGNIFICATION E-ZOOM	1x Optical/8x Digital	1x Optical/8x Digital	4.5x Optical/36x Digital	1x Optical/8x Digital	1x Optical/8x Digital
OBJECTIVE LENS	19mm f/1.1	19mm f/1.1	60mm f/1.25	19mm f/1.1	19mm f/1.1
DISPLAY TYPE	Digital OLED	Digital OLED	Digital OLED	Digital OLED	Digital OLED
BATTERY TYPE	CR123 Lithium	CR123 Lithium	CR123 Lithium	CR123 Lithium	CR123 Lithium
BATTERY LIFE	2 hr. @ 30 Hz	2 hr. @ 30 Hz	1.5 hr. @ 60 Hz	1.5 hr. @ 60 Hz	1.5 hr. @ 60 Hz
FRAME RATE	30 Hz	30 Hz	60 Hz	60 Hz	60 Hz
USER INTERFACE	Thumbstick	Thumbstick	Thumbstick	Thumbstick	Thumbstick
POLARITY/ZOOM/DFC	Yes	Yes	Yes	Yes	Yes
IMAGE CAPTURE	No	Yes	Yes	Yes	Yes
EDGE DETECT	No	No	Yes	Yes	Yes
SHOE INTERFACE	No	No	Yes	Yes	Yes
CONFIGURATION LEVEL	No	No	Yes	Yes	Yes
VIDEO OUT	No	No	Yes	Yes	Yes
RETICLE FEATURE	No	No	No	No	No
HELMET MOUNT KIT	No	No	No	No	Yes
WEAPON FLIP MOUNT KIT	No	No	No	No	No



IR-PATROL™ M300W	IR-PATROL™ M300W Kit	IR-PATROL™ M300W-TK
640x480	640x480	640x480
MicroIR 12	MicroIR 12	MicroIR 12
VOx Vanadium-Oxide	VOx Vanadium-Oxide	VOx Vanadium-Oxide
22°	22°	22°
1x Optical/8x Digital	1x Optical/8x Digital	1x Optical/8x Digital
19mm f/1.1	19mm f/1.1	19mm f/1.1
Digital OLED	Digital OLED	Digital OLED
CR123 Lithium	CR123 Lithium	CR123 Lithium
1.5 hr. @ 60 Hz	1.5 hr. @ 60 Hz	1.5 hr. @ 60 Hz
60 Hz	60 Hz	60 Hz
Thumbstick	Thumbstick	Thumbstick
Yes	Yes	Yes
Yes	Yes	Yes
Yes	Yes	Yes
Yes	Yes	Yes
Yes	Yes	Yes
Yes	Yes	Yes
Yes	Yes	Yes
No	No	Yes
No	Yes	Yes



TRIJICON
IR-HUNTER®
 THERMAL RIFLESCOPE

> LIGHTS-OUT PRECISION FOR A SUPERIOR HUNTING ADVANTAGE

More than 20 years of night vision system design has led us to the Trijicon IR-HUNTER® thermal riflescope series. Take advantage of a 640x480 12 micron sensor, Enhanced Target Recognition (ETR), 8x digital electronic zoom, a 60 Hz frame-rate system and a MIL Spec digital OLED micro display for crisp, precise imagery that lets you hunt for hours and hours. And with similar turret knob controls as your day optic, the IR-HUNTER lets you take your shot with confidence. Even in complete darkness.



> GERMANIUM LENS

The IR-HUNTER® uses only the best materials in the objective lens assemblies.

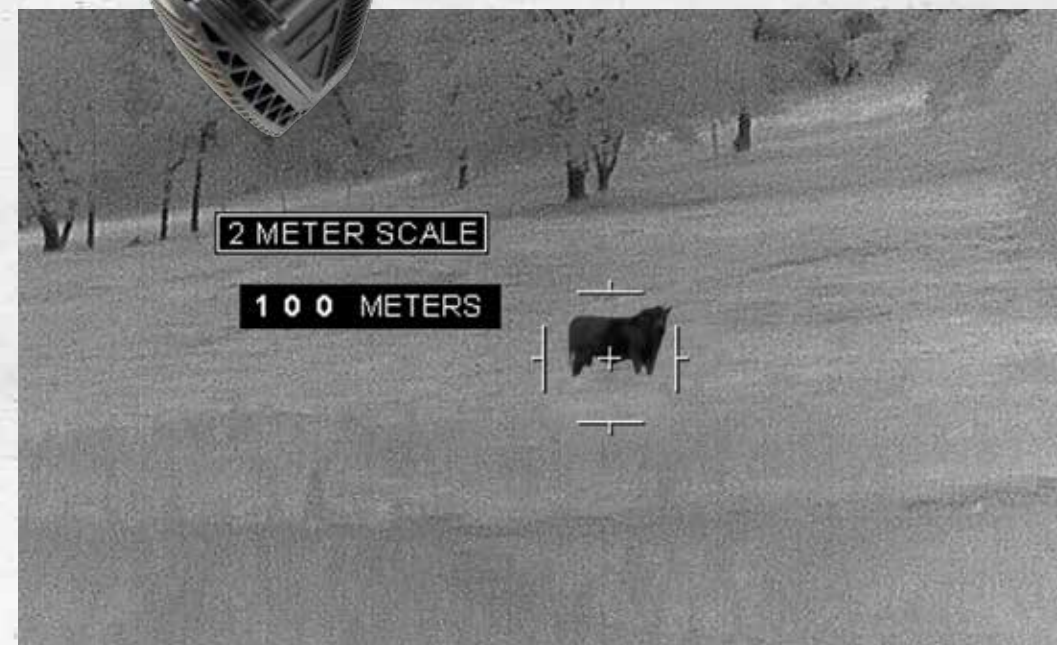
- > Protective Window
 - > DLC Hard Carbon Coated
 - > AR-Coated Germanium Lenses
- > Thermally Stabilized
 - > High Environmental Durability
 - > Shock-Resistant

▶ TAKE YOUR SHOT WITH CONFIDENCE.

The Trijicon IR-HUNTER® uses its superior processing power to deliver precision sighting reticles that scale as you zoom—the same as a first focal plane reticle does on a high-end riflescope. And even when your image is enlarged, it still remains clear, with clarity and detail that enables exact identification.



Image taken with IR-HUNTER® MK2.



Stadiametric Rangefinder lets you determine your distance at a moment's notice.





TRIJICON IR-HUNTER® THERMAL RIFLESCOPE

VERSATILE BY DESIGN

Unlike other thermal riflescopes that ask you to decide between a dedicated system and a clip-on, the IR-HUNTER® gives you the best of both worlds—right out of the box—with high-resolution clarity and absolute precision.

SENSOR TYPE

Uncooled VOx (Vanadium Oxide)

THERMAL SENSITIVITY

<50mk

SENSOR RESOLUTION

640x480 Pixels

SENSOR PITCH

12 Micron

FRAME RATE

60 Hz with a 30 Hz Power Save Mode

SPECTRAL RESPONSE

8 – 12 Microns

DISPLAY TYPE

Digital OLED

DISPLAY RESOLUTION

640x480 Pixels

BASIC FEATURES

E-Zoom, Polarity

ADVANCED FEATURES

DCE – Digital Contrast Enhancement
ETR – Enhanced Target Recognition
RANGEFINDER – Stadiametric MK3

START-UP TIME

Approx. 5 Seconds

VIDEO OUTPUT

Analog RS-170 (with Optional Cable)

BATTERY TYPE

MK2: 2 x CR123
MK3: 3 x CR123

BATTERY LIFE

3.5 Hours @ 60 Hz

WEAPON MOUNT

LaRue Tactical Rail Mount

RETICLE

Simple and Complex Reticles
MOA Adjustments
Digital Readouts (MK3)
4 Save Locations (MK3)

WEIGHT

MK2 20mm: 29.1 oz (825g)
MK2 35mm/MK3 35mm: 34.9 oz (989g)
MK3 60mm: 37 oz (1050g)

DIMENSIONS

1.5x Model 6.5" L x 2.9" H x 3.1" W
2.5x Model 7.4" L x 2.9" H x 3.1" W
4.5x Model 7.6" L x 3.1" H x 3.3" W

DIOPTER

-6/+2

EYE RELIEF

27mm

ENVIRONMENTAL

-40c to +55c Operating
-45c to +75c Storage

STANDARD SYSTEM



The Trijicon IR-HUNTER® is built for shooters, by shooters. Never before has there been a thermal sight that is so easy and intuitive to use with so many options and features.

TACTICAL SYSTEM



Engineered to be balanced on your weapon system, the IR-HUNTER® offers an unmatched image and tactical turret knobs that shooters will be familiar with.

CLIP-ON SYSTEM



The IR-HUNTER® is not just your everyday thermal sight. It's designed to easily support your day optics as a clip-on thermal sight, offering built-in alignment software and easy switch modes.

MODELS

MODEL	OPTICAL MAG	DIGITAL MAG	LENS	BASE FOV
IRMK2-20	1.5x	12x	19mm f/1.1	22°
IRMK2-35	2.5x	20x	35mm f/1.2	12°
IRMK3-35	2.5x	20x	35mm f/1.2	12°
IRMK3-60	4.5x	36x	60mm f/1.25	7°

MK2 20MM

IR-HUNTER® MK2 20MM

- > High-Performance Optics
- > 1.5x Optical/12x Digital
- > 22° Field of View
- > Advanced Turret Adjustment Knobs
- > Advanced 640x480 12 Micron Thermal Core
- > Full Digital Display
- > Objective Lens Flip Cap



TRIJICON
IR-HUNTER®
 THERMAL RIFLESCOPES

MK2 35MM

IR-HUNTER® MK2 35MM

- > High-Performance Optics
- > 2.5x Optical/20x Digital
- > 12° Field of View
- > Advanced Turret Adjustment Knobs
- > Advanced 640x480 12 Micron Thermal Core
- > Full Digital Display
- > Objective Lens Flip Cap



TRIJICON
IR-HUNTER®
 THERMAL RIFLESCOPES

MK3 35MM

IR-HUNTER® MK3 35MM

Identical System as MK2, Plus

- > Azimuth/Elevation Position Readouts
- > New Reticle Patterns
- > Multiple Reticle Save Locations
- > Stadiametric Rangefinder
- > Download/Video Cable
- > Dual-Lever Mount
- > Battery Extender



Turret Adjustment Knobs
Intuitive User Interface

35mm Athermalized Lenses
DLC Hard-Coated/Sealed Optics

Flip-Cap
Modeled Flip-Cap for Easy Calibration

MIL Spec Construction
6061-T6 Aluminum Housing

Eye Guard
Recoil Protection/Light Discipline

LaRue™ Throw-Lever Mount
Tactical Quick Disconnect

TRIJICON
IR-HUNTER®
 THERMAL RIFLESCOPES



MK3 60MM

IR-HUNTER® MK3 60MM

Same System as MK2, Plus

- > Azimuth/Elevation Position Readouts
- > 60mm Objective Lens 7° Field of View
- > Stadiametric Rangefinder
- > Digital Position Readouts
- > Multiple Reticle Save Locations



Flip-Cap
Modeled Flip-Cap for Easy Calibration

Turret Adjustment Knobs
Intuitive User Interface

MIL Spec Construction
6061-T6 Aluminum Housing

Eye Guard
Recoil Protection/Light Discipline

60mm Athermalized Lenses
DLC Hard-Coated/Sealed Optics

Dual Lever LaRue™ Mount
Tactical Quick Disconnect

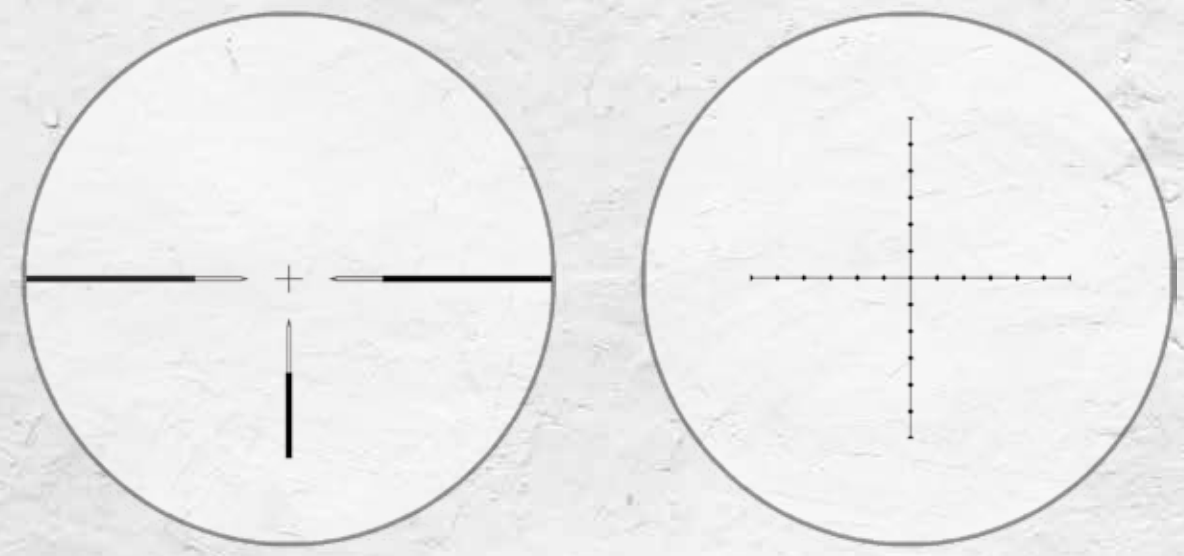
Battery Extender
Extended Time of Operation

TRIJICON IR-HUNTER® THERMAL RIFLESOPES

INTELLIGENT RETICLES

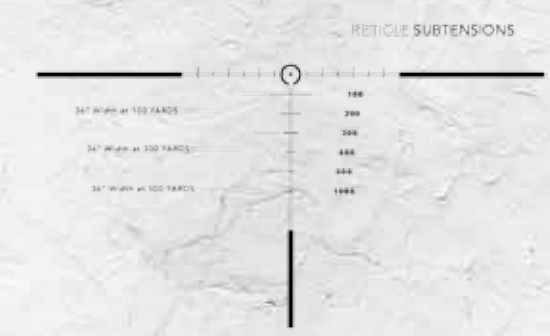
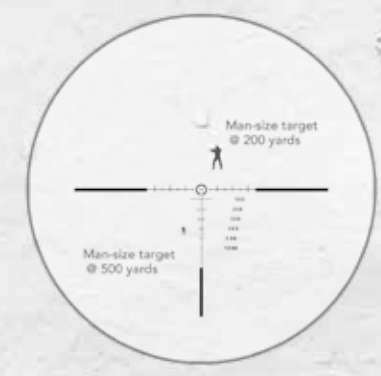
The IR-HUNTER® uses its processing power to deliver precision sighting reticles.

- Works the Same as First Focal Plane
- Selectable Reticles
- Intelligent Auto-Contrast



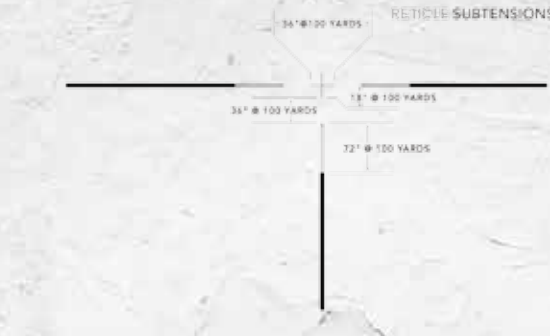
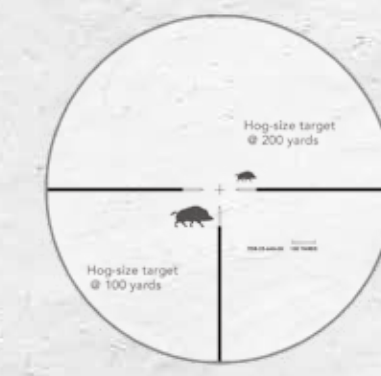
TSR – THERMAL SUBTENSION RETICLE

For shooting at extended distances, the TSR reticle provides some basic ranging data for the user. The width for each of the elevation marks is based at 36" wide for the distance readout in yards to the right of the mark. As you zoom in, the reticle works the same as a first focal plane sight where the reticle scales as you zoom. It's just that easy.



TCR – THERMAL COMBAT RETICLE

One of the easiest reticles to use is our TCR Thermal Combat Reticle, which is a simple crosshair in the center. The width of the crosshair is always 36 MOA or 36" at 100 yards. Half of the crosshair is 18 MOA, which is the width of a man at 100 yards. If a man-size target is the height of the crosshair, then he will be 200 yards out. As you zoom, the reticle also zooms, so you are always 36 MOA.



TDR – THERMAL DOT RETICLE

The IR-HUNTER®, along with other thermal weapon sights, is primarily used at night and with lower magnification than standard day optics. Because of this, the engagement ranges at night are much shorter. To maximize clarity and usage in this engagement, the IR-HUNTER uses a DOT reticle system similar to the MII DOT. But instead of each dot representing 1000:1, our system is calibrated at 100:1, so the distance between the dots is 100 yards.



➤ ETR – ENHANCED TARGET RECOGNITION

INCREASED TARGETING

Enhanced Target Recognition is a capital feature of the IR-HUNTER®. While using other thermal scopes, important imagery is often washed out against the sky and horizon even with the use of frequent recalibrations. The IR-HUNTER's ETR focuses its processing power on your target, resulting in enhanced, precisely detailed target images. This means more hits for the shooter.

AUTO CALIBRATION

Scene washout occurs when the horizon has a lot of sky behind the target, resulting in a large difference in temperature. The thermal system has to divide this difference into shades of gray, and there are only so many available. The ETR tells the sensor to perform its auto calibration within the brackets, which will have a smaller temperature difference to give more detail on the target area.



No ETR



No ETR



ETR Turned On



ETR Turned On



IR-HUNTER®

MK2 AND MK3



SYSTEM	IR-HUNTER® MK2 20MM	IR-HUNTER® MK2 35MM	IR-HUNTER® MK3 35MM	IR-HUNTER® MK3 60MM
SENSOR RESOLUTION	640x480	640x480	640x480	640x480
SENSOR MICRON	MicroIR 12	MicroIR 12	MicroIR 12	MicroIR 12
SENSOR TYPE	VOx Vanadium-Oxide	VOx Vanadium-Oxide	VOx Vanadium-Oxide	VOx Vanadium-Oxide
FIELD OF VIEW	22°	12°	12°	7°
MAGNIFICATION E-ZOOM	1.5x Optical/12x Digital	2.5x Optical/20x Digital	2.5x Optical/20x Digital	4.5x Optical/36x Digital
OBJECTIVE LENS	19mm f/1.1	35mm f/1.2	35mm f/1.2	60mm f/1.2
ATHERMALIZED	Yes	Yes	Yes	Yes
FRAME RATE	60 Hz	60 Hz	60 Hz	60 Hz
DISPLAY TYPE	Digital OLED	Digital OLED	Digital OLED	Digital OLED
HD GRAPHICS	640x480	640x480	640x480	640x480
DISPLAY SIZE	640x480	640x480	640x480	640x480
BATTERY TYPE	2 each 123 Lithium	2 each 123 Lithium	3 each 123 Lithium	3 each 123 Lithium
BATTERY LIFE	3.5 hr. @ 60 Hz	3.5 hr. @ 60 Hz	3.5 hr. @ 60 Hz	3.5 hr. @ 60 Hz
ETR ENHANCEMENT	Yes	Yes	Yes	Yes
DFC DIGITAL FOCUS	Yes	Yes	Yes	Yes
USER CONTRAST	Yes	Yes	Yes	Yes
USER INTERFACE	Turret Knobs	Turret Knobs	Turret Knobs	Turret Knobs
IMAGE CAPTURE	Yes	Yes	Yes	Yes
VIDEO OUTPUT	Yes	Yes	Yes	Yes
RANGEFINDER	No	No	Yes	Yes



THE NEXT-GENERATION CLIP-ON SIGHT FOR 24-HOUR DOMINATION IN ANY LIGHT

The Trijicon SNIPE-IR™ is designed to become one with your optical day sight, both on the battlefield and on the hunting field. It comes with a 640x480 12 micron VOx sensor and OLED digital micro display that gives you clear, brilliant imagery at a fast 60 Hz frame-rate system—even through pitch-black darkness. And its advanced VisRelay collimating optic eliminates parallax. The Trijicon SNIPE-IR is optimized for use with a 4x day optic.



TRIJICON
SNIPE-IR™
THERMAL CLIP-ON

THE TECHNOLOGY ADVANTAGE

Digital OLED Display

640x480 OLED offers a pixel-to-pixel match with the sensor for the clearest possible image

MicroIR™ 12 Micron Technology

Incredible image quality and 42% increase in magnification over 17 micron sensors

NO-SHOT ZERO Sight-In

Easy sight-in integration for accurate calibrations

CLIP-ON, HYBRID and STAND-ALONE Modes

The versatility to let you choose and change your system mode

VisRelay Collimating Optic

Eliminates parallax

60 Hz Frame-Rate System

Get real-time imaging with an option to use 30 Hz in power save mode

12° Horizontal FOV

Enhanced situational awareness for detection and target acquisition



> USER-FRIENDLY. ABSOLUTELY ACCURATE.

Advanced technology should not be complicated to use. Especially in the middle of the night, in the middle of nowhere. The NO-SHOT ZERO feature makes it simple to verify boresight when attached, while its user-friendly thumbstick lets you change menus and perform NUCs with ease—even in complete darkness.



THE TRIJICON SNIPE-IR™ AND THE ACOG®: THE PERFECT WEAPONS SYSTEM

When you combine the one-and-only Trijicon ACOG® combat optic with the clip-on SNIPE-IR™ thermal sight, you create the perfect 24-hour advanced weapons platform. Engage targets. Maintain maximum situational awareness. Own the battlefield or the hunting field.

> SPECIFICATIONS

SENSOR TYPE

Uncooled VOx (Vanadium Oxide)

FIELD OF VIEW

12° Horizontal

BATTERY TYPE

2 x CR123

EXIT PUPIL

30mm clip-on

THERMAL SENSITIVITY

<50mk

SYSTEM MODES

CLIP-ON / HYBRID / DEDICATED

BATTERY LIFE

3.5 Hours @ 60 Hz

ENVIRONMENTAL

-40c to +55c Operating
-45c to +75c Storage

SENSOR RESOLUTION

640x480 Pixels

BASIC FEATURES

E-Zoom, Polarity

WEAPON MOUNT

Mini D-LOC Mount – Standard Model

SENSOR PITCH

12 Micron

ADVANCED FEATURES

NO-SHOT ZERO
Image Capture
DFC – Digital Focus Control

DAY SIGHT COMPATIBILITY

1x up to 4x Fixed Sights
1–4x and 1–6x Variable Sights
2.5–10x up to 4–12x Variable Sights

FRAME RATE

60 Hz with a 30 Hz Power Save Mode

START-UP TIME

Approx. 5 Seconds

WEIGHT

24.6 oz (700g)

SPECTRAL RESPONSE

8 – 12 Microns

VIDEO OUTPUT

Analog RS-170 (with Optional Cable)

DIMENSIONS

7.4" L x 3.0" H x 2.95" W

DISPLAY TYPE

Digital OLED – 640x480 Pixels

MODELS

MODEL	SENSOR	LENS	BASE FOV	MOUNT TYPE
IRCO-35	640x480	35mm f/1.14	12°	Mini D-LOC



SMALL.
LIGHTWEIGHT.
BRILLIANT.

> MORE TECHNOLOGY PER SQUARE INCH THAN ANY OTHER THERMAL SIGHT

The Trijicon REAP-IR™ mini thermal riflescope is a small, light, powerful thermal riflescope that lets you engage targets in any light. It's trusted by the most demanding shooters and hunters who require speed and accuracy for nighttime use.



TRIJICON
REAP-IR™
MINI THERMAL RIFLESCOPE

SMALL PACKAGE. BRILLIANT TECHNOLOGY.

The REAP-IR™ is small, light, powerful thermal riflescope that lets you engage targets in any light. It's trusted by demanding shooters that require speed and accuracy for nighttime use. It offers a 12° field-of-view lens, 2.5x optical magnification, a 60 Hz frame-rate system and 640x480 resolution with a 12 micron thermal core for industry-leading image quality.

640x480 Thermal Sensor

Offers clear, crisp imagery through smoke, dust and complete darkness

Thumbstick System Controller

Fully ruggedized, weatherproof, multidirectional thumbstick control

Mini D-LOC Mount

Patented, compact mounting system for precision and repeatability

MicroIR™ 12 Micron Technology

60 Hz frame-rate system with 42% increase in magnification over 17 micron technology

Stadiametric Ranging

Determine your distance at a moment's notice

Reticle Digital Readouts

Displays your current reticle position in the lower-left corner of the screen

EDGE DETECT Mode

Offers a fraction of the brightness of other modes so your eyes are not as prone to night blindness from the screen

8x Digital Zoom

Advanced built-in sighting system maintains boresight and increases MOA accuracy

Made in the USA

Built for shooters by shooters right here in America



➤ TAKE CONTROL IN TOTAL DARKNESS.

Conventional buttons won't cut it at 3 a.m. That's why the REAP-IR™ comes with a large, easy-to-find thumbstick controller with multidirectional functionality. It also comes with one of the most user-friendly thermal sight displays on the market. Know your current reticle position at all times, quickly determine distance to your targets, choose from six levels of white hot/black hot and take advantage of 8x digital zoom.



➤ SPECIFICATIONS

SENSOR TYPE

Uncooled VOx (Vanadium Oxide)

THERMAL SENSITIVITY

<50mk

SENSOR RESOLUTION

640x480 Pixels

SENSOR PITCH

12 Micron

FRAME RATE

60 Hz with a 30 Hz Power Save Mode

SPECTRAL RESPONSE

8 – 12 Microns

DISPLAY TYPE

Digital OLED

DISPLAY RESOLUTION

640x480 Pixels

BASIC FEATURES

E-Zoom, Polarity

ADVANCED FEATURES

DCE – Digital Contrast Enhancement

DFC – Digital Focus Control

RANGEFINDER - Stadiametric

START-UP TIME

Approx. 5 Seconds

VIDEO OUTPUT

Analog RS-170 (with Optional Cable)

BATTERY TYPE

2 x CR123

BATTERY LIFE

3.5 Hours @ 60 Hz – 2 batt.

5 Hours @ 30 Hz – 2 batt.

WEAPON MOUNT

Mini D-LOC Picatinny Rail Mount

RETICLE

Simple and Complex Reticles

MOA Adjustments

Digital Readouts

4 Save Locations

WEIGHT

20.8 oz (590 g)

DIMENSIONS

6.5" L x 3.0" H x 2.95" W

DIOPTER

-6/+2

EYE RELIEF

27mm

ENVIRONMENTAL

-40c to +55c Operating

-45c to +75c Storage

MODELS

MODEL	OPTICAL MAG	DIGITAL MAG	LENS	BASE FOV
IRMS-35	2.5x	20x	35mm f/1.14	12°

➤ EXPORT CONTROLS

Trijicon® products are subject to export and foreign trade control laws of the United States. These include the International Traffic in Arms Regulations (22 C.F.R. § 120-130, "ITAR"), the Export Administration Regulations (15 C.F.R. § 730-774, "EAR"), statutes that provide authority for the ITAR and EAR, and economic sanction laws and regulations administered by the United States Government (including those set forth in 31 C.F.R. Parts 500-598).

The U.S. Department of State strictly regulates exports and re-exports of defense articles and technology. The State Department's Directorate of Defense Trade Controls is charged with controlling the export of defense articles and defense services covered by the United States Munitions List, in accordance with 22 USC § 2778-2780 of the Arms Export Control Act and the ITAR. All Trijicon products listed in this catalog have been designated as defense articles subject to the ITAR. Export of these products from the United States requires prior authorization from the U.S. Department of State.

Diversion contrary to these laws and regulations is prohibited.



