

STEINER 
Nothing Escapes You

.....
WWW.STEINER.DE

STEINER-OPTIK GMBH

Dr.-Hans-Frisch-Str. 9 · 95448 Bayreuth · Germany

Tel. +49 921 7879-851 · Fax +49 921 7879-89

service@steiner.de
.....

 **BERETTA**
H O L D I N G

STEINER-OPTIK is a
Beretta Holding company



HUNTING



SHOOTING



ADVENTURE



MARINE

STEINER 
Nothing Escapes You



CONTENT

6 TECHNOLOGY & INNOVATIONS

HUNTING

10 NIGHTHUNTER

12 LRF 1700

14 RANGER XTREME

16 OBSERVER

RIFLESCOPES

18 RANGER

20 RANGER BC

22 MICRO REFLEX SIGHT

SHOOTING

26 M7Xi IFS

30 M7Xi / M8Xi

32 M5Xi

34 STEINER SIGHTS

ADVENTURE

38 WILDLIFE

42 SKYHAWK 4.0

44 SAFARI ULTRASHARP

MARINE

50 COMMANDER GLOBAL

52 COMMANDER LRF

54 COMMANDER

58 NAVIGATOR PRO

INFORMATION

60 SPECIFICATIONS
BINOCULARS

62 SPECIFICATIONS
RIFLESCOPES

63 RETICLES

64 ACCESSORIES & WARRANTY /
CUSTOMER SERVICE

STEINER 
Nothing Escapes You

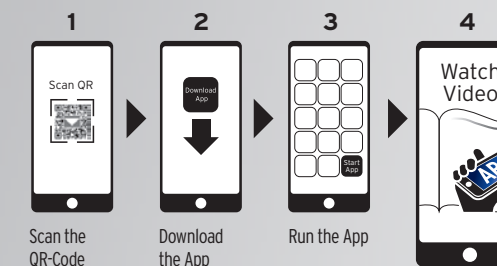
EXPERIENCE STEINER VIDEOS IN THE CATALOG!

Download the new
Steiner AR-App

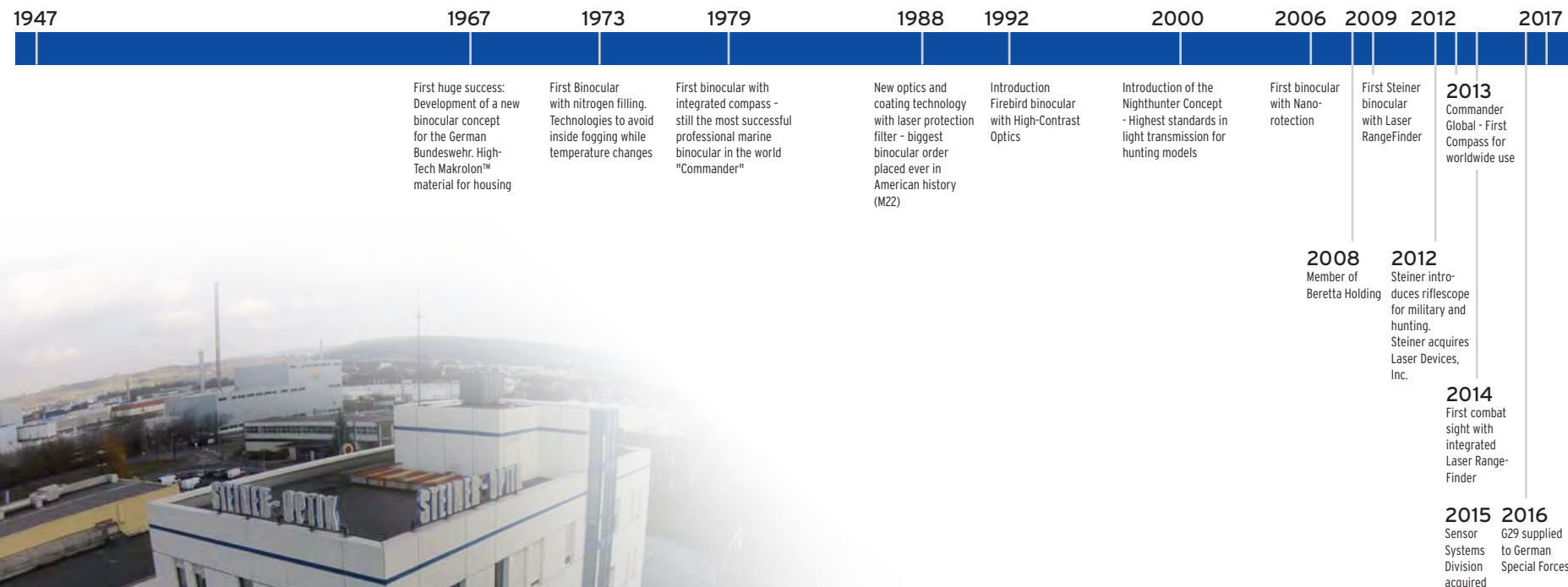


Get the App
on your Smart-
phone or Tablet
and let the aug-
mented reality
impress you.

You can also search for our app on
PLAY STORE (Android) or APP STORE
(Apple) by typing the name "Steiner-
Optik". The Steiner AR-app is for free.



Move your
Smartdevice
over the page



ABOUT US

Over 70 years of history.

For Steiner, superb performance and bone-deep tenacity was born in the ruin of war. In 1947, in the face of demolished infrastructures and a collapsed economy, Karl Steiner started a one man workshop in Bayreuth, Germany, obsessed with a single goal: creating optical products so functional, sturdy and uniformly flawless that nothing in the chaotic, mass-production post-war world could compare. His passion for unmatched optical perfection pushed Steiner-Optik from a hardscrabble startup to a 50-man factory within six years, and on to become a worldwide optical icon with binoculars and rifle scopes for every purpose, a history of innovation, and legions of diehard enthusiasts in every category.

Faithful to the traditions upon which his father founded the company, Carl Steiner held on to his commitments of unsurpassed quality, to keep the production location in Germany, to create new jobs and career opportunities for his employees, expert training of his staff of now approximately 150 and a constant investment in research and development.

Today, Steiner manufactures binoculars for the military, hunting and outdoor activities. The name Steiner stands for performance optics. These premium German optics are now available in more than 80 countries, prized by sportsmen and spectators, birders and sailors, aviators and explorers, and deployed by security and military forces around the globe. The research, development and production site in Bayreuth is arguably the most advanced optical facility on earth. Steiner world-class lenses, coatings and prisms are created, perfected

and produced in Germany, enduring the most exhaustive production, inspection, testing and approval process in the industry - lenses alone go through 460 exacting steps. Steiner was the first to develop the lightweight, indestructible rubber-armored Makrolon® housing, all-conditions nitrogen-charged fog proofing, the military laser protection filter, integrated binocular/compass, water-repellant Nano-Protection® lenses, and countless - and continuing - coating technologies that produce the highest contrast and light-transmission.

In 2008 Steiner became a proud member of the Beretta Holding group. As a member of the elite Beretta Group - the world's oldest weapons manufacturer - Steiner is stronger, more versatile, and more innovative than ever. Every Steiner product will provide best-in-class performance for life - and for lifetimes to come. Since decades, Steiner is the undoubted market leader for nautical binoculars als well as the inventor of the compass binoculars and remains the first choice for sailors and captains of small boats and big ships all around the world.

Steiner makes trusted optics for life's defining moments. The successful pursuit and capture of these moments demand the fast and precise detection, location and identification of a distant objective. Whether the objective is wild life, a marine bearing, law enforcement suspect or military combatant, our optics enhance an individual's most important sense, vision, so that on land or sea - **Nothing Escapes You.**

PORRO PRISM RUGGED. STEINER RELIABLE.

STEINER porro prism binoculars are extremely tough and dependable, ideal for military and tactical applications. The porro system creates a realistic 3D-image, with maximum depth of field, for accurate evaluation and targeting. Even at extremely long distances, the user can clearly see whether one object is behind or in front of another. With exceptional light transmission, the porro system also provides enhanced clarity in challenging low-light Conditions.



STEINER – RUGGED AND RELIABLE

By the use of new high-tech materials STEINER set new standards for optical performance and robustness. Decades of user experience in over 80 countries in the military Segment lie in our civilian products. That's why we can say, STEINER manufactures the most rugged binoculars in The world. Each glass undergoes stringent quality checks. By tests such as collimation, shock resistance, water resistance and temperature resistance it is ensured that all binoculars leave Steiner withstanding any extreme.

MORE LIGHT, BETTER IMAGE

All Steiner lenses are being purchased through premium suppliers of raw glass. All air-to-glass surfaces of STEINER binoculars and scopes are multi-coated with proprietary, cutting-edge formulations of minerals and rare earth compounds that maximize clarity, colour and definition. As the one brand that has developed optics specifically for military service, STEINER is committed to giving you the competitive edge. This demand to highest glass quality delivers the unmatched light transmission and secures Steiners leading position in the world market.



UNIQUE NITROGEN-PRESSURE SYSTEM



Fogging up or the formation of condensation inside the binoculars is totally prevented by this high-tech proprietary solution. Even temperature variations between -40°C to +80°C do not affect the functionality of Steiner nitrogen-filled binoculars. By 2-way-valve-technology, the maintenance of the binoculars is possible at any time even after many years.

DESIGNED FOR COMFORT

Binoculars rest comfortably in the palms, with rubberized housings and hand-friendly ridges, curves and pads for intuitive use. Scopes have adjustable illumination, oversized knobs and positive sound/feel feedback for easy settings and repeatable accuracy. Every detail is ergo-nomically perfect because the world never is.



BUILT FOR ABUSE

Proven STEINER lenses and prisms are built into unbreakable, rubber-armoured Makrolon polycarbonate or magnesium-alloy binocular housings. Then purged, sealed and shielded to be fog-proof, waterproof, impact resistant and immune to extremes of every kind. Now, and for lifetimes to come.



CRAFTED TO SEE BETTER, NOT JUST FARTHER

For over 67 years, STEINER-Optik in Bayreuth Germany, has raised the bar in premium long-range optics. Over 460 exacting steps ensure rigorous quality throughout design and manufacture. Relentless innovation creates technologies like the N2 injection system, laser protection filters, STEINER Nano-Protection and Diamond-Night-Lens-Coatings. Constant user feedback, from battlefields to birding, keeps performance state of the art. No optics will serve you better.



..... STEINER GENUINE QUALITY
STEINER grinds and polishes its own premium lenses and prisms, then multi-coats all air-to-glass surfaces with proprietary coatings for unmatched brightness and clarity.



..... UNERRING PRECISION
After more than 460 high-precision manufacturing and inspection steps, finished multi-coated lenses and prisms are assembled into unbreakable Makrolon polycarbonate or magnesium alloy binocular housings.



..... PERFECT COATINGS
STEINER advanced coatings, applied to every air/glass surface, have evolved to enhance light so your eyes perceive more contrast and brighter detail, even in low-light conditions.

HUNTING

**YOUR PREY DIDN'T
SURVIVE THE HUNT,
BUT YOUR OPTICS WILL.**

Once you're after that trophy, nothing can hold you back. In addition to providing the sharpest image you can get, STEINER optics survive the worst conditions you can face. Low light or heavy glare, deep cold, rock slams or grit storms, no matter. The view is always crystal clear and dead certain. Even after countless relentless pursuits, STEINER optics are eager for more and ready to go. Not unlike yourself.

BINOCULARS

**NIGHTHUNTER
LRF 1700
RANGER XTREME
OBSERVER**

RIFLESCOPES

**RANGER
RANGER BC
MICRO REFLEX SIGHT**





8X56 NIGHTHUNTER

Experience for yourself the next evolutionary step of the ultimate night hunting binoculars made by Steiner!

Item No. 2310

MAGNIFICATION 8x | FIELD OF VIEW 135m | WEIGHT 1090g



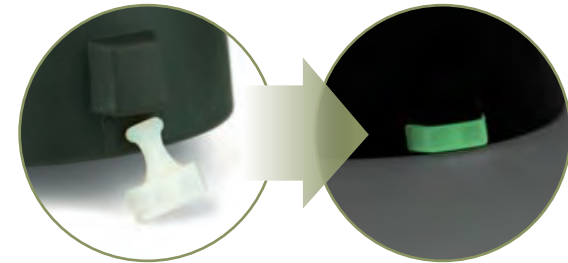
CONTOURED EYE CUPS
fold over for eyeglasses use



XL FIELD OF VIEW
135 m on 1000 m



MAXIMUM LIGHT TRANSMISSION (96%+)



STEINER LUMICLIP
simple yet innovative to easily locate your binoculars!



CLICLOC strap attachment for instant neck strap release.

The evolution of a legend – The new **NIGHTHUNTER 8X56** gives you the ability to identify game and take ethical shots when others cannot. Steiner's latest developments in binocular technology are the result of 70 years of optical development and innovation. This technology, combined with Steiner's hunting heritage, produces the ultimate optic for night hunting. The new Steiner Nighthunter – almost like having an unfair advantage.

..... **NIGHTHUNTER OVERALL FEATURES**

- **MAXIMUM (96%+) LIGHT TRANSMISSION:** Success in hunting is about the odds. The longer you can hunt the better your odds of success. Extend your hunt every night. One more chance-one more look-one more shot. Steiner's advanced technology penetrates the shadows with incredibly bright images – See what other hunters are missing.
- **SPORTS-AUTO-FOCUS:** No need to fumble in the night chasing focus. To view objects in low light there is no bettersystem. Focus each eyepiece to your vision once, and then count on razor-sharp images from 20 meters to infinity. Clearly have the ability to determine your trophy of a lifetime no matter the darkness – Perfect focus all the time.
- **WIDE FIELD OF VIEW:** The more you can see the better hunter you can be. See every animal in the field and let Nothing Escape You with a huge 135-meter field of view.
- **CLARITY IN THE NIGHT:** Male or female? Trophy or not? Without a pair of Nighthunters you may never know – The porro prism design produces three-dimensional depth perception to quickly locate and evaluate your target. Add to this Steiner's proprietary Diamond Night lens coating formula and you have superior clarity and contrast at dusk and dawn giving extra minutes of prime hunting time.
- **RUGGEDNESS, PRECISION AND PERFORMANCE:** Steiner's always function when you need them. No worries when it comes to durability. With more than half a century of battle-proven reliability there are no better rugged-built optics that perform like a Steiner.
- **CONTOURED EYE CUPS:** Holding your binoculars in a way to block the sun with your hands can be awkward. Peripheral light while using binoculars can impair your vision no matter the time of day. Steiner's patented eyecups allow you to take advantage of the Nighthunter's amazing optical technology and always see the clearest image possible.
- **STEINER LUMICLIP:** When you can hear your prey but can't see him you must be quiet as a field mouse. Don't stumble in the dark groping for your binoculars creating noise that will send game running. Steiner's new LumiClip is simple yet innovative. The luminescent clip glows with just enough light to easily locate your binoculars in the darkest night.

NIGHTHUNTER

THE EVOLUTION OF A LEGEND

Overcome dawn, dusk and distance with images so bright and sharp you can count points, from a ridge away, at sunset. For big game, not even the shadows are safe.



STEINER-OPTIK

STEINER-OPTIK



Art.-Nr. 2316

10X30LRF

LRF 1700 10X30

Binoculars with all the features plus high-contrast images at maximum resolution. The laser range finder offers new possibilities without the need for additional equipment.

MAGNIFICATION 10x | FIELD OF VIEW 108m | WEIGHT 785g



Art.-Nr. 2315

8X30LRF

LRF 1700 8X30

The LRF 1700 8x30 is surprisingly compact, lightweight and easy to use. It will quickly become a trusted and practical additional to your hunting gear.

MAGNIFICATION 8x | FIELD OF VIEW 114m | WEIGHT 795g

LASER RANGE FINDER

Measuring range	Ranging accuracy
25 to 1.700 m	± 1 m to 300 m
Range dependent of weather and vision	± 2 m to 600 m
Range dependent of weather and vision	± 0.5 % > 600 m



LRF 1700 - MEASURE WITHOUT THE NEED TO REFOCUS
The most compact and lightweight binoculars - up to 20% less weight and volume - with precise laser distance measurement up to 1700 m, scan mode to continuously measure distance to moving targets and the legendary Steiner reliability and ruggedness.

..... LRF 1700 OVERALL FEATURES

- **STEINER HIGH-DEFINITION-OPTICS** for clear, razor sharp images in full contrast with maximum resolution right to the edge. A highly specialised coating provides first-class light transmission. Diffused light is reduced to a minimum. Contours are always sharp and distinctly visible.
- Top performing optics by **SPORTS-AUTO-FOCUS SYSTEM** that lets you focus each eyepiece to your vision once, then remains razor sharp from 20m to infinity, no more chasing focus on moving targets. Bright, 3D-images.
- **LEGENDARY RUGGEDNESS** with durable polycarbonate Makrolon housing that withstands 11G of impact, Floating Prism System that uses flexible silicon to absorb severe shock, impact and abuse without damage, Water Pressure Proofness up to 5 m, Nitrogen-Pressure-Filling into the optic against fogging up inside at temperature range between -40°C to +80°C and the protective, hydrophobic Steiner Nano-Protection on the lenses making water sheeting off and dirt, dust, snow are repellent for easy cleaning and clear view.
- Versatile **ERGOFLEX EYECUPS** made of non irritating and non-ageing silicone, which provides a naturally comfortable feeling on the eyes and can also be adjusted three ways by simply folding it over: ergonomic shape, cylindrical classic setting and folded over for use with eyeglasses
- **STEINER NONOISE AND COMFORT USE ELEMENTS** are optimised for silent and intuitive operation. NBR-Rubber armouring particularly on the protruding operating elements ensure effective sound absorption. Especially good grip characteristics guarantee secure handling even with gloves.
- **HIGH-END ACCESSORIES** with case, neoprene-carrying strap, rain protection cap and objective covers.

LRF 1700



**SPOT YOUR TARGET,
PLUS SPOT ON RANGING WITH ONE OPTIC**

Game finding precision optics and pinpoint laser ranging, all in one compact binocular.



STEINER-OPTIK



8X56

RANGER XTREME 8X56

Large 56mm objectives result in maximum light transmission for maximum clarity and sharp contrast at dawn and dusk.

Item No. 5118

MAGNIFICATION 8x | FIELD OF VIEW 125m | WEIGHT 1130g



10X42

RANGER XTREME 10X42

Features 10x magnification to judge points or mass at shooting distance and track game at long range, with brightness to weight performance nothing in its category can match.

Item No. 5117

MAGNIFICATION 10x | FIELD OF VIEW 108m | WEIGHT 790g

The **RANGER XTREME SERIES** was made for the ambitious hunter who expects a binocular to hunt as hard and as long as he does. You often get your best results at day's edge, when prey feed camouflaged by early sun or growing darkness. The light enhancing design of Ranger Xtreme binoculars unlocks the shadows they hide in, giving you clear game-spotting vision in dim light. In full light, it lets you peer deeper in darkened woods, revealing sign and quarry that other hunters miss.

RANGER XTREME OVERALL FEATURES

- **STEINER HIGH-CONTRAST-OPTICS** provide bright, brilliant views, accurate colour and clear images with high contour sharpness for exceptional performance up to close range of 2m.
- **FAST-CLOSE-FOCUS** central focusing wheel requires minimal, stepless rotation for quick absolute sharpness from close-up to infinity- comfortable, easy to use.
- **OUTSTANDING RUGGEDNESS** with durable polycarbonate Makrolon housing, Water Pressure Proofness to 3m and the Nitrogen-Pressure-Filling into the optic against fogging up inside at temperature range between -20°C to +80°C. Non-slip NBR-Longlife rubber armour protection resists oil, acid or adverse weather. Impervious to harsh conditions for generations of trusted use.
- **XL FIELD OF VIEW** ensures an overview of search and observations activities.
- **ERGONOMIC DESIGN** with rubber armoured protruding controls providing comfortable and silent observations with effective sound absorption. Ergonomic pliable eyecups made of soft, skin-friendly and non-ageing silicone protect against incident light and draught. Simply to be folded down for use with eyeglasses. Thumb depressions for an excellent grip, even with gloves.
- **CLICLOC-STRAP ATTACHMENT SYSTEM** attaches and releases neck strap with instant, push-button ease, and keeps binoculars hanging straight and action-ready.
- **HIGH-END ACCESSORIES** with high-end case, ClicLoc neoprene-carrying strap for instant, push-button ease, rain protection cap and objective covers.



8X42

RANGER XTREME 8X42

Versatile, compact and easy to carry, perfect for rifle hunting in a variety of environments. A lightweight all-terrain favourite with a great field of view.

Item No. 5116

MAGNIFICATION 8x | FIELD OF VIEW 125m | WEIGHT 780g



8X32

RANGER XTREME 8X32

Light and compact, ideal for mobile hunters who need the versatility of good magnification and wide view.

Item No. 5119

MAGNIFICATION 8x | FIELD OF VIEW 133m | WEIGHT 620g

RANGER XTREME



SUCCESSFUL HUNTING IN LOW LIGHT CONDITIONS.





8X56

OBSERVER 8X56

The new nitrogen-filled Observer 8x56 guarantees you to spot your game in all weather conditions.

Item No. 2335

MAGNIFICATION 8x | FIELD OF VIEW 112m | WEIGHT 1130g



10X42

OBSERVER 10X42

10x power and bright images are perfect for long range detailed observations from close up to far away without added weight.

Item No. 2314

MAGNIFICATION 10x | FIELD OF VIEW 100m | WEIGHT 706g



8X42

OBSERVER 8X42

A versatile all-round binocular. Light-weight with bright images until twilight.

Item No. 2313

MAGNIFICATION 8x | FIELD OF VIEW 116m | WEIGHT 696g

The new **OBSERVER SERIES** are designed for a versatile use to match any situation under all conditions. Three full sized models in a lightweight design provide comfortable ergonomics for long-term observation, bright images, crisp resolution and a wide field of view. Hardly any other binocular gets you so close with such clear, sharp detail, for so little budget.

..... OBESERVER OVERALL FEATURES

- **STEINER HIGH-CONTRAST-OPTICS** provide bright, brilliant views, accurate colour and clear images with high contour sharpness for exceptional performance up to close range of 2 m.
- **FAST-CLOSE-FOCUS** central focusing wheel requires minimal, stepless rotation for quick absolute sharpness from close-up to infinity. Comfortable, easy to use.
- **OUTSTANDING RUGGEDNESS** with durable polycarbonate Makrolon housing, temperature range between -15°C to +55°C. Non-slip NBR-Longlife rubber armour protection resists oil, acid or adverse weather.
- **ERGONOMIC DESIGN** with rubber armoured protruding controls providing comfortable and silent observations with effective sound absorption.
- **CYLINDRIC ROTATION EYECUPS** made of soft, skin-friendly and non-aging silicone.
- **LIGHTWEIGHT ROOF-PRISM DESIGN** has less bulk to stay out of the way while observing.
- **FULL ACCESSORIES** with bag, carrying strap, rain cover and lenses covers.

OBSERVER



THE PERFECT ALLROUND COMPANION

For anyone who demand versatile capability in their optics.



STEINER-OPTIK



STEINER-OPTIK



RANGER 1-4X24

The driven hunt specialist with a wide field of view. With red dot to ensure quick target acquisition. The ideal rifle scope also for big game hunting. True 1x magnification allows shots with both eyes open.

Item No. 8760900204

TUBE DIAMETER 30mm | LENGTH 262mm | WEIGHT 490g



RANGER 2-8X42

Typical, elegant allround riflescope. Suitable for daytime hunting until twilight. Universally applicable to almost all rifles

Item No. 8761900204

TUBE DIAMETER 51mm | LENGTH 303mm | WEIGHT 585g

NEW



RANGER 2,5-10X50

Universal, all-purpose riflescope with large 50mm objective diameter for a clear and bright image even in bad light condition.

Item No. 8764900204

TUBE DIAMETER 57,5mm | LENGTH 315mm | WEIGHT 640g



RANGER 4-16X56

The specialist for long range, high precision shots also in difficult lighting conditions. Proven for challenging hunting situations. Great details by high magnification. Parallax adjustment from 50m to infinity.

Item No. 8763900204

TUBE DIAMETER 63,5mm | LENGTH 368mm | WEIGHT 720g

Our **RANGER RIFLE SCOPE SERIES** delivers a short construction with a wide field of view. These scopes deliver High-Contrast optics and are superbly capable in low light by a light transmission of more than 90%. Their lightweight, shockproof and appealing design give you the most for your money and will always deliver unfailing performance whatever firearm or target you prefer. The proven 4x zoom range lets hunters around the world pair their new scope with their favourite rifle.

RANGER OVERALL FEATURES

- **STEINER HIGH-CONTRAST-OPTICS** provides bright, brilliant views, clear images, edge-to-edge sharpness and delivers also an excellent resolution of detail.
- **XL FIELD OF VIEW** and a safe eye distance of 9 cm for the utmost overview and safety in any situation.
- **INTUITIVE RETICLE ILLUMINATION** on the center tube provides maximum grip. Small, easy-to-use rotating knobs offer 6 nighttime and 5 daytime settings and an OFF position between each step. The battery compartment is integrated in the knob.
- **RELIABLE MECHANICS** provide accurate repetition and exact clicks. Precise diopter setting and non-slip, rubberized power ring.
- **EXTREME RUGGEDNESS** by highly resistant materials and precise, reliable construction give the rifle scopes extreme shooting stability. Water Pressure Proofness up to 2m even without cover caps on the turrets. Special sealing techniques make this possible. No dust, no dirt and no moisture can penetrate inside. Fogging or formation of condensation on the inside of the scope is completely eliminated by the Steiner Nitrogen-Pressure-Filling. Even temperature variations of -25 °C to +65 °C will not adversely affect the functionality and all moving parts can be operated.
- **ELEGANT, LIGHTWEIGHT AND SLEEK DESIGN:** one-piece tubes with matte, scratchproof hard anodized finish convince by a sleek middle part and soft intersections with smart radiuses. Small windage and elevation turrets.
- **4A-I-RETICLE** with red dot has three posts for quick, uncluttered target acquisition.
- **SCOPE OF DELIVERY** consists of objective and ocular lens covers.

RANGER

WIDE. BRIGHT. SHORT.

Compact versatility for virtually any rifle, plus an optical performance to pick our prey from any environment.



RANGER 3-12X56

Powerful all-round riflescope for high seat and still hunting. Light weight with 705g and large field of view. By high light transmission a perfect companion for hunting at night. Precise illumination adjustment delivers perfect performance in daylight into nighttime. Riflescope for all kinds of rifles.

Item No. 8762900204

TUBE DIAMETER 63,5mm | LENGTH 337 mm | WEIGHT 705g



PREIS-LEISTUNG

PIRSCH
Edition 17-2017
TEST
Drivenhunt Riflescopes

PREIS-LEISTUNG

Niedersächsischer
Jäger
Edition 19-2017
TEST
Drivenhunt Riflescopes

10 YEAR WARRANTY



RANGER BC 3-12X56

Powerful all-round riflescope for high seat and still hunting. Light weight with 705g and large field of view. By high light transmission a perfect companion for hunting at night. Precise illumination adjustment delivers perfect performance in daylight into nighttime. Riflescope for all kinds of rifles.

Item No. 8762904604

TUBE DIAMETER 63,5mm | LENGTH 337 mm | WEIGHT 705g



RANGER BC 4-16X56

The specialist for long range, high precision shots also in difficult lighting conditions. Proven for challenging hunting situations. Great details by high magnification. Parallax adjustment from 50m to infinity.

Item No. 8763904604

TUBE DIAMETER 63,5mm | LENGTH 368mm | WEIGHT 720g

BALLISTIC CONTROL

The 3-12x56 and 4-16x56 models have been upgraded to include the new Ballistic Control (BC) turrets for elevation adjustments.



The **STEINER RANGER** has always been the perfect companion for any hunting trip. Now during your most extreme adventure even when the shot of a lifetime is more than 400 meters away, you can confidently make the shot.

Now we offer the **3-12x56** and **4-16x56** models with Ballistic Control (BC) turrets for elevation adjustments to be 100% sure that nothing will escape you even if it is further away.

RANGER BC OVERALL FEATURES

- **STEINER HIGH-CONTRAST-OPTICS** provides bright, brilliant views, clear images, edge-to-edge sharpness and delivers also an excellent resolution of detail.
- **XL FIELD OF VIEW** and a safe eye distance of 9cm for the utmost overview and safety in any situation.
- **INTUITIVE RETICLE ILLUMINATION** on the center tube provides maximum grip. Small, easy-to-use rotating knobs offer 6 nighttime and 5 daytime settings and an OFF position between each step. The battery compartment is integrated in the knob.
- **RELIABLE MECHANICS** provide accurate repetition and exact clicks. Precise diopter setting and non-slip, rubberized power ring.
- **EXTREME RUGGEDNESS** by highly resistant materials and precise, reliable construction give the rifle scopes extreme shooting stability. Water Pressure Proofness up to 2m even without cover caps on the turrets. Special sealing techniques make this possible. No dust, no dirt and no moisture can penetrate inside. Fogging or formation of condensation on the inside of the scope is completely eliminated by the Steiner Nitrogen-Pressure-Filling. Even temperature variations of -25°C to +65°C will not adversely affect the functionality and all moving parts can be operated.
- **ELEGANT, LIGHTWEIGHT AND SLEEK DESIGN:** one-piece tubes with matte, scratchproof hard anodized finish convince by a sleek middle part and soft intersections with smart radiuses. Small windage and elevation turrets.
- **4A-I-RETICLE** with red dot has three posts for quick, uncluttered target acquisition.
- **SCOPE OF DELIVERY** consists of objective and ocular lens covers.

RANGER BC

THE STEINER RANGER RIFLESCOPE SERIES NOW AVAILABLE WITH BALLISTIC CONTROLS

What was already the perfect companion for every hunt becomes even more specialized in long range shooting.

The new Rangers with Ballistic turrets will come with five different sets of rings that cover all major hunting bullets and calibers. Every adjustment ring guarantees outstanding precision with only a +/- 6cm at 400 meters.



Intuitive shooting with open eyes - the Steiner MRS offers this option for a fast and unerring shot. Extremely robust and with brilliant optics.



MICRO REFLEX SIGHT PICATINNY RAIL

Item No. 8700000000 MAGNIFICATION 1x | WEIGHT 70g | WIDTH 46mm | HEIGHT 40mm



MICRO REFLEX SIGHT UNIVERSAL RAIL

Item No. 8700000003 MAGNIFICATION 1x | WEIGHT 70g | WIDTH 46mm | HEIGHT 40mm

The prompt and accurate shot is the key to success in many hunting situations. At shorter distances, this is achieved with no other optics as easy as using the **Micro Reflex Sight (MRS)** red dot sight. In any weather and even in difficult lighting conditions. The ideal addition to your equipment.

MRS OVERALL FEATURES

- **HIGH-PERFORMANCE OPTICS:** High-resolution, crisp and clear image by multi-coated precision optics.
- **PERFECT USE:** Aiming with this optics is incredibly fast and safe. Regardless of the viewing distance and angle the red illuminated target point shows accurately to the target. Ideal for shooting with both eyes open.
- **COMPACT DESIGN:** The Steiner MRS impresses with its extremely compact design and is unsurpassed in terms of the low weight.
- **INTELLIGENT ILLUMINATION:** The automatic, environment-oriented illumination always provides the perfect brightness of the reticle. In addition, a 3-stage manual setting is possible. An Auto-Off switches the illumination of the reticle off after 8 hours.
- **EXTREME RUGGEDNESS:** Thanks to innovative sealing, moisture, dust and dirt cannot harm the optics of the Steiner MRS.
- **EASE OF USE:** The functions are controlled via a single key. Battery replacement is possible thanks to lateral compartment, without tools or dismantling of the optics.



3 MOA

Regardless of eye relief shows the red illuminated target point to the finish line. Ideal for shooting with both eyes open.

MICRO REFLEX SIGHT



[ORIGINAL SIZE]

FAST TARGET ACQUISITION UNDER ALL WEATHER CONDITIONS

Cristal clear red dot sight in every environment.
Intuitive use. Compact and lightweight.

10 YEAR WARRANTY

SHOOTING

BUILT FOR THE BEST – DESIGNED FOR SUCCESS

For many decades, Steiner products have been the first choice for military and special forces because they cannot compromise on precision, ruggedness and reliability.

Our products are tested to the highest military standards, guaranteeing unsurpassed optical and mechanical quality and performance, that is reflected in the unique reliability of our products.

Whether at the shooting range, in competition or in hunting - trust in the reliability of your own equipment is always indispensable.

We design the high-performance optics built for the best in the world - for superiority in every situation!

RIFLESCOPES

M7Xi IFS
M7Xi/M8Xi
M5Xi
S-SERIES SIGHTS



NEW

M7Xi IFS 4-28X56



The Intelligent Firing Solution with integrated customizable display always provides all the important information in real time to the operator and sets a new benchmark as the ultimate long-range rifle scope.

Item No. 8719003601

TUBE DIAMETER 34 mm | LENGTH 390 mm | WEIGHT 1.150 g

Steiner's new **M7Xi IFS** rifle scope offers an Intelligent Firing Solution Interface that provides important information to the operator about levelling and current turret setting in real time. The built-in Ballistic Calculator and Sensor Suite use temperature, air pressure, inclination and wind drift to determine the bullet point of impact in real time. The display and user interface can be customized via Smartphone App (Bluetooth connection to user needs. Information can be easily moved, arranged or deactivated if needed.)

M7Xi IFS
OVERALL FEATURES

- **IFS - INTELLIGENT FIRING SOLUTION** with individually customizable display in the field of view showing every required information in real time - once set and you never lose sight of the target.
- The built-in **BALLISTIC CALCULATOR AND SENSOR SUITE** determines the bullet point of impact in real time.
- **INDIVIDUAL CUSTOMIZABLE DISPLAY** provides information about levelling and the current turret setting, allowing you to know the current exact shooting position in the field of view. Display and user interface can be customized to user needs.
- **BLUETOOTH-CONNECTIVITY** for easy set-up on the smart phone. Every information can be moved freely or can be deactivated if needed via smart phone app.
- The **SHORT OVERALL LENGTH** of the scope creates more rail space for clip-on devices (e.g. thermal imaging or night vision devices) for superior operational capabilities in any combat situation.
- **PRECISE WINDAGE/ELEVATION ADJUSTMENT** is easy and accurate for repeatable accuracy, with tactile click-by-click feedback you can hear and feel.
- **LOW PROFILE TURRETS** provide outstanding situational awareness and additional mounting options for add-ons and accessories.
- **EXTREME RUGGEDNESS AND RELIABILITY** achieved through durable materials and reliable design. A sturdy 34mm tube provides reliability and more space for windage and elevation adjustments for longer shots.
- **WATERPROOF AND SHOCKPROOF**
The M7Xi IFS is waterproof up to 20 m (66Feet) and the operating temperature range is -46°C to +64°C. It can withstand up to 900Gs
- **RETICLE VARIETY**
The new M7Xi is available with MSR2, G2B, TRemO3 reticle.

M7Xi IFS NEW

LONG RANGE SHOOTING
MADE SIMPLE...

Steiner's new M7Xi IFS rifle scope -
Always Stay On Target!



"Image quality is outstanding; however, it is difficult to easily describe in words. There is no one single individual trait of the image viewed through the scope that is amazing, rather than the excellent, almost perfect, balance of it that pleasantly surprises the user."



STEINER-OPTIK



STEINER-OPTIK

LONG RANGE SHOOTING MADE SIMPLE

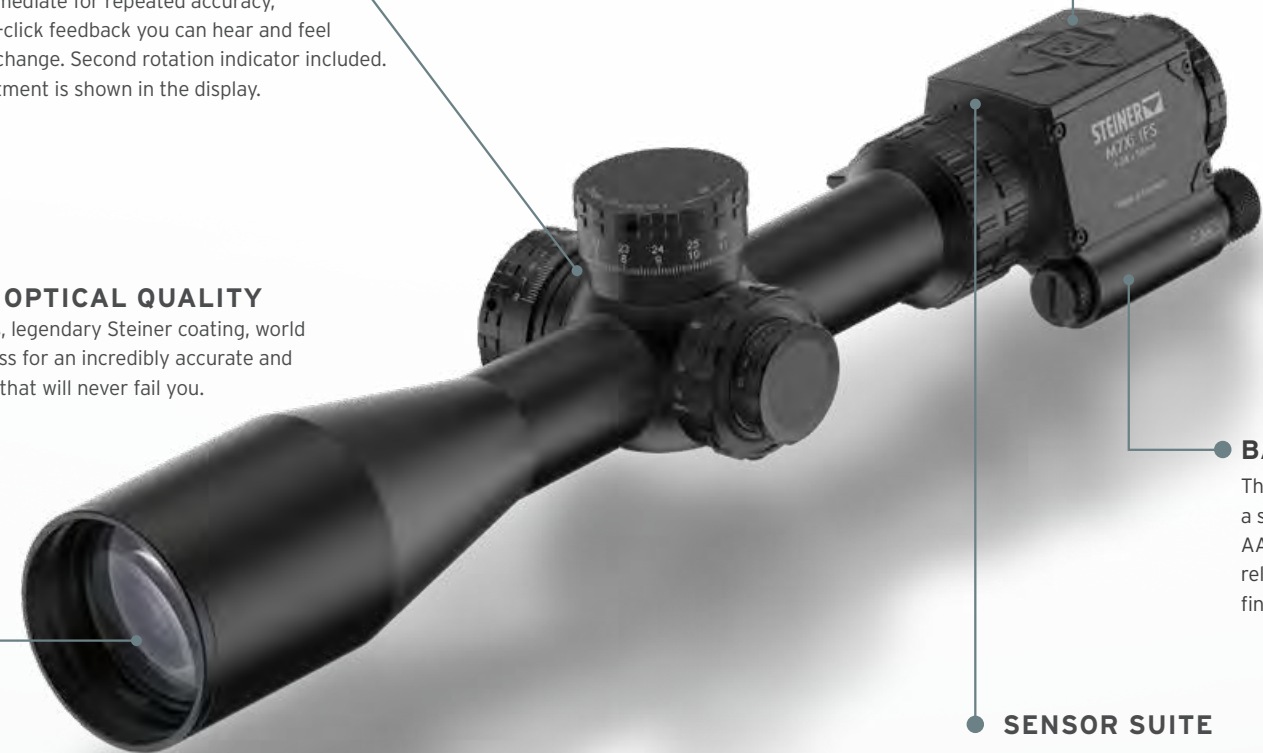
- INCREDIBLY ACCURATE AT LONG DISTANCES
- DRAMATICALLY REDUCE THE TIME NEEDED TO TAKE THE SHOT
- ALL CURRENT SETTINGS AND SUGGESTED ADJUSTMENTS VISIBLE IN DISPLAY
- ONCE ACQUIRED, YOU NEVER LOOSE SIGHT OF YOUR TARGET
- INNOVATIVE BUT YET RUGGED, RELIABLE AND INCREDIBLY PRECISE

PRECISE WINDAGE AND ELEVATION ADJUSTMENT

Easy and immediate for repeated accuracy, with click-by-click feedback you can hear and feel every small change. Second rotation indicator included. Turret adjustment is shown in the display.

UNMATCHED OPTICAL QUALITY

Military grade optics, legendary Steiner coating, world renowned ruggedness for an incredibly accurate and high tech riflescope that will never fail you.



MENU KEY PANEL

The user interface is very intuitive and easy to use. Soft touch buttons take the user through the quick and easy set-up.

BATTERY SLOT

The M7Xi IFS is powered by a simple AA battery. AA batteries are durable, reliable and easy to find anywhere in the world.

SENSOR SUITE

Sensors provide real time input for temperature, barometric air pressure and inclination.

AUTOMATICALLY CALCULATE ELEVATION SETTINGS

The M7Xi IFS provides the optimal firing solution setting for any given distance, bullet specifications, temperature and altitude. This firing solution will automatically adjust with changes in the elevation turret.

INCLINATION INDICATOR

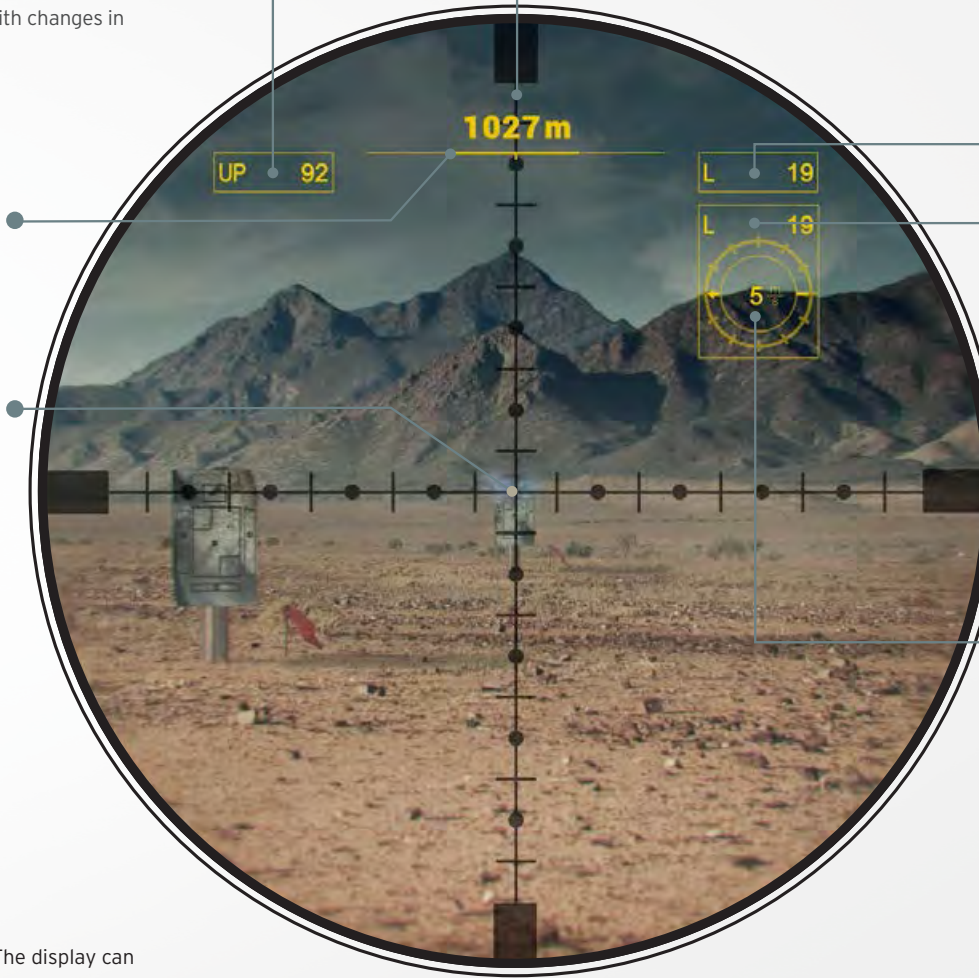
Visible in the display, the live inclination level eliminates shooting error due to cant.

PERFECT POINT OF IMPACT

The M7Xi IFS and M8Xi IFS automatically adjusts the reticle position using the provided environmental information. In a matter of seconds, it delivers the perfect point of impact.



The display can be 100% customized using the IFS App. Simply, download the app to set up your riflescope directly from your phone via blue-tooth.



TARGET DISTANCE

Simply rotate the elevation adjustment turret until the distance shown in display matches the distance of the target.

WINDAGE

Actual windage settings.

SUGGESTED IDEAL WINDAGE SETTINGS

Based on distance, bullet specifications, temperature and altitude, the M7Xi IFS suggests the ideal windage setting. Just rotate the windage adjustment until it matches the indicated setting.

WIND SPEED AND DIRECTION

Indicated wind speed and direction are shown as well.

THE M7XI IFS AND M8XI IFS DISPLAY IS 100% CUSTOMIZABLE.

KEEP THE INFORMATION THAT IS MOST IMPORTANT TO YOU IN YOUR FIELD OF VIEW TO CREATE A UNIQUE SHOOTING EXPERIENCE UNIQUE.





NEW

M7Xi 4-28X56

The 7x zoom gives the operator more flexibility and a higher resolution for all distances while the large field of view and the outstanding optical quality create a perfect overview of the surroundings at all times.

Item No. 8723000226

TUBE DIAMETER 34mm | LENGTH 387 mm | WEIGHT 950 g



NEW

M8Xi 1-8X24

The short overall length of the scope creates more rail space for clip-on devices (e.g. thermal imaging or night vision devices) for superior operational capabilities in any situation.

Item No. 8723000126

TUBE DIAMETER 34mm | LENGTH 260 mm | WEIGHT 650 g

Based on the outstanding success of the **M5Xi** - used today by Special Forces around the globe - Steiner sets a new benchmark with the ultimate long-range riflescope **M7Xi 4-28x56** with a 7x zoom and an impressive field of view (1.42-9 m at 100 m). The ultimate DMR riflescope **M8Xi 1-8x24** offers an 8x zoom, which gives the operator more flexibility and a higher resolution from close quarter to mid-range scenarios. The new Steiner **M7Xi/M8Xi Series** guarantees outstanding reliability, water proofness and withstands shocks up to 900Gs.

M7Xi/M8Xi OVERALL FEATURES

- The **SHORT OVERALL LENGTH** of the scope creates more rail space for clip-on devices (e.g. thermal imaging or night vision devices) for superior operational capabilities in any combat situation.
- **LOW PROFILE TURRETS** provide outstanding situational awareness and additional mounting options for add-ons and accessories.
- **PRECISE WINDAGE/ELEVATION ADJUSTMENT** is easy and accurate for repeatable accuracy, with tactile click-by-click feedback you can hear and feel.
- **ILLUMINATED RETICLE** with a brilliant image and a light transmission of more than 94%.
- **HIGH PERFORMANCE OPTICS** with repeatable and precise working mechanics.
- **EXTREME RUGGEDNESS AND RELIABILITY** achieved through durable materials and reliable design. A sturdy 34mm tube provides reliability and more space for windage and elevation adjustments for longer shots.
- **WATERPROOF AND SHOCKPROOF**
The M7Xi is waterproof up to 20 meters with a functional range of -46°C to +64°C. It is rugged enough to withstand impact testing to 900Gs on all optical and electronic components.
- **RETICLE VARIETY**
The new M7Xi is available with MSR2, G2B, TReMoR3 reticle.
The new M8Xi is available with DMR8i reticle.

M7Xi / M8Xi

NEW

THE ULTIMATE LONG-RANGE-RIFLESCOPE

New benchmarks within the legendary Steiner ruggedness



10 YEAR WARRANTY



M5Xi 3-15X50

The 3-15x is the perfect compromise of compact size and long-range performance. It provides outstanding visibility even in lowest light conditions combined with highest precision, accuracy and reliability.

Item No. 8707000101

TUBE DIAMETER 34mm | LENGTH 365 mm | WEIGHT 920g



M5Xi 5-25X56

The 5-25x is the ultimate long-range scope for far distances and large calibers. High power and equivalent elevation travel extend your range beyond 1.500 meters, with outstanding visibility even in lowest light.

Item No. 8704000101

TUBE DIAMETER 34mm | LENGTH 422mm | WEIGHT 1.000g

The **M5Xi SERIES** offers ambitious hunters and sport shooters maximum performance even under toughest conditions. The high-grip, precise and accurate reticle adjustment offers, in combination with fine and detailed special reticles, many possibilities for every area of application. The **M5Xi** has been developed in close cooperation with international special forces mainly for rigorous demands of military missions around the globe. It has been tested in field operations under the toughest conditions by special forces, which is why it was even selected for the G29 of the Special Commando Forces of the Germany Army (KSK der Bundeswehr). The **M5Xi RIFLESCOPE SERIES** from STEINER sets new standards in terms of performance, quality and reliability.

M5Xi
OVERALL FEATURES

- **5X ZOOM** provides maximum range at the high end, wider field of view at the low end, and eliminates any tunneling effect.
- **HIGH PERFORMANCE OPTICS** for 94% + light transmission to ensure optimal performance and better contrast in low light.
- **ILLUMINATED RETICLE** with seven night and four day levels with two "OFF" positions at each end, and quick standby levels between each for fast return setting.
- **OPTIMIZED EXTERIOR DESIGN** with larger, positive grip elevation, windage, parallax and illumination knobs and nonslip diopter and magnification adjustment.
- **PRECISE WINDAGE/ELEVATION ADJUSTMENT** is easy and accurate for repeatable accuracy, with tactile click-by-click feedback you can hear and feel.
- **DUOSCALE** - patented elevation adjustment with second-rotation scale that's hidden when inactive.
- **EXTREME RUGGEDNESS** engineered according to the highest military standards, rugged enough to withstand impact testing to 900Gs on all optical and electronic components. Water Pressure Proofness to 2 m. No dust, dirt or moisture can penetrate inside. Fogging or formation of condensation on the inside is completely eliminated by the STEINER Nitrogen-Pressure-Filling. Temperatures of -25 °C to +65 °C will not adversely affect the functionality.
- **RETICLE VARIETY**
The M5Xi is available with G2B, MSR2, TReMoR3 and B4I reticle.

M5Xi

**BUILT IN GERMANY.
DESIGNED FOR THE WORLD.**

The M5Xi riflescope series from STEINER sets new benchmarks in terms of performance, quality and reliability.



10 YEAR WARRANTY



4X32
S432
NEW

The large eye box together with the excellent illumination settings (Rotary Digital Control) allows the operator to be effective in any environment.

Item No. 8794900103
MAGNIFICATION 4x | FIELD OF VIEW 11,8m | LENGTH 143mm | WEIGHT 640g



3X32
S332
NEW

The unmatched field of view (14,1 m) guarantees perfect perception of your surroundings at all times while the large eye relief (more than 80 mm) allows comfortable positioning in every situation.

Item No. 8793900103
MAGNIFICATION 3x | FIELD OF VIEW 14,8m | LENGTH 142mm | WEIGHT 590g



Field of view market standard



S332 field of view

The Steiner **S332** (3x zoom) and **S432** (4x zoom) are designed and engineered to be the best sights in the market due to the combination of optical quality, field of view, eye relief and a large eye box. The **S-SERIE** provides enhanced accuracy and quick target acquisition in a compact size with a bright and brilliant optical quality. They are easy to mount and simple to use becoming the most effective and convenient sights in the market.

S-SERIE
OVERALL FEATURES

- **3X OR 4X MAGNIFICATION TARGET ACQUISITION UP TO 800m**
- **VERY LARGE FIELD OF VIEW (S332: 14,1m; S432: 11,8m)** guarantees perfect perception of your surroundings.
- **LARGE EYE RELIEF** (=80mm) ensures comfortable handling in every situation.
- **VERY LARGE EYE BOX** combined with the excellent illumination settings (Rotary Digital Control) ensures an effective use of the sight under every condition.
- **OUTSTANDING ILLUMINATION SETTINGS**
- **DIOPTRIC SETTING FROM -3 TO +3**
- **100% FOG-PROOF WITH NITROGEN FILLING**
- **WATERPROOF AND SUBMERSIBLE UP TO 10m**
- **SHOCKPROOF UP TO 900 Gs**
- **GERMAN PRECISION OPTICS**
- **M-LOK MOUNTING SYSTEM**
- **RUGGED CONSTRUCTION**
- **RELIABLE MECHANICS**
- **SIMPLE AND EASY TO USE**

S432/S332 NEW

ENHANCED ACCURACY AND QUICK TARGET ACQUISITION

Designed to never fail in any situation.



10 YEAR WARRANTY

STEINER-OPTIK

STEINER-OPTIK

ADVENTURE

BUILT FOR A LIFETIME OF EXCEPTIONAL EXPERIENCES

You pass this way but once. Make sure you see it clearly: all the colour and contrast, every breathtaking detail, all laid out with depth and clarity only Steiner's world-class optical technology and adventure-loving construction can provide. Every hike, cruise, outing and event has its own unforgettable high point. Make the most of it with the best companion you could have along: Steiner Outdoor binoculars.

WILDLIFE
SKYHAWK 3.0
SAFARI ULTRASHARP



If you want to discover nature up-close and true-to-life you must try the **Wildlife XP series** with its innovative Steiner Ultra-High-Definition-Optics featuring high colour fidelity, highest detail resolution and optimized contrast. These binoculars reflect ergonomics and visual excellence that is unsurpassed anywhere, and rugged reliability that can survive anything.



Item No. 2303

MAGNIFICATION 10x | FIELD OF VIEW 112m | WEIGHT 850g

10X44

High 10x-power combined with absolute optimum close-ups and sharpness in Ultra-HD. Top-notch comfort and legendary durability allow use in rough outdoor environment. A real must-have.



Item No. 2302

MAGNIFICATION 8x | FIELD OF VIEW 133m | WEIGHT 880g

8X44

Versatile 8 x magnification and a particularly large field of view. Practical, easy handling and comfortable - a great choice of optics in Ultra-HD.

WILDLIFE XP OVERALL FEATURES

- **STEINER ULTRA-HD-OPTICS** with highest manufacturing precision and high-end fluoride glass for extraordinary colour fidelity, highest detail resolution right to the edge and optimized, clear contrast. Delivers razor sharp images, topclass light transmission and 3D brilliance with sculptural images and excellent depth of field. Great field of view for a perfect overview in any situation.
- **RAPID-PRECISION-FOCUS-SYSTEM** consisting of:
 - **STEINER PRECISION-SETTING** offers individual dioptre setting for the right/left eyepiece to perfectly adjust your personal visual acuity. Once set, you are ready for all observations. Simple to operate.
 - **STEINER FAST-CLOSE-FOCUS** central focusing wheel requires minimal, stepless rotation for quick absolute sharpness from close-up to infinity - comfortable, easy to use. For razor-sharp details at a close-focus range from 2m to infinity.
 - **STEINER DISTANCE-CONTROL-SYSTEM** gains valuable time where fast reaction is required: once the estimated observing distance is pre-set on the scale of the non-slip XL focusing wheel, no more than a little fine tuning is necessary.
- **COMFORT-BALANCE-SYSTEM:** Maximum comfort by ergonomic ComfortGrip thumb rests made of Technogel. Safe and fatigue-proof, long-term observations, even with one handed use are provided and a perfect balance is guaranteed. Ergonomic, rotating eyecups made of skin-friendly, non-ageing silicon protect against indirect light and wind draughts.
- **EXTREME RUGGEDNESS:** The legendary durability at a temperature range of -40°C to +80°C uses a lightweight die cast magnesium alloy housing that is corrosion free and shock proof. The comfortable NBR-Longlife rubber armouring withstands the effects of oil, acid or climatic influences. Even in extremely wet conditions, heat or cold the surface stays grasp and slip proof. The nitrogen pressure filling via a two-way-valve-system prevents fogging up and from condensating inside the binocular. Water pressure proof up to 5m.
- **STEINER NANO-PROTECTION:** Always a clear view by the protective, hydrophobic coating on the lenses that makes water sheeting off and dirt, dust, snow are repellent for easy cleaning and clear view.
- **FIELD-TESTED ACCESSORIES** consisting of a neoprene ClicLoc-carrying strap that can be fastened and released in seconds and its loops permit an easy use of a comfort harness (offered separately). Fitted in a high-end bag, both rain protection cap and objective covers are made of NBR longlife rubber.

WILDLIFE XP



SEE TRUE COLOURS

30 YEAR WARRANTY

STEINER-OPTIK



10X42

WILDLIFE 10X42

The 10x42 with 10 times magnification for the best observation of little details at long distances.

Item No. 2325

MAGNIFICATION 10x | FIELD OF VIEW 108m | WEIGHT 716g



8X42

WILDLIFE 8X42

The 8x42 with a wider field of view for a more stable image also when you are moving.

Item No. 2324

MAGNIFICATION 8x | FIELD OF VIEW 125m | WEIGHT 725g

The new **WILDLIFE BINOCULARS SERIES** perfectly represents everything Steiner stands for: innovation, extreme ruggedness, usability, high optics quality and outstanding mechanical reliability. The New Steiner **WILDLIFE** is designed and developed for the ambitious outdoorsmen and outdoorswomen who cannot accept compromise when it comes to equipment. When the weather becomes a threat, you need your equipment to be reliable. The new design and re-engineered optics make the new **WILDLIFE** a companion you can always trust, especially in the most adverse conditions.

WILDLIFE OVERALL FEATURES

- **STEINER HIGH-DEFINITION-OPTICS** deliver razor-sharp images with high image contrast and brilliant colour definition. First-class coating technology and light transmission always provide clear and bright images, even in poor light conditions.
- **FAST-CLOSE-FOCUS** central focusing wheel requires minimal, stepless rotation for quick absolute sharpness from close-up to infinity- comfortable, easy to use.
- **DISTANCE-CONTROL-SYSTEM** is the fastest focussing system in the market and enables pre-setting of observation distance and sharp focussing by one simple turn of the non-slip XL-focussing wheel. (10x42 and 8x42 Models)
- **XL FIELD OF VIEW** ensures an overview of search and observations activities.
- **ERGONOMIC DESIGN** ensures extreme handiness and compactness.
- **EXTREME RUGGEDNESS** with durable polycarbonate Makrolon housing, Water Pressure Proofness to 2m and the Nitrogen-Pressure-Filling via the two-way-valve-system against fogging up inside the optics at a temperature range between -20°C to +70°C. Non-slip NBR-Longlife rubber armour protection resists oil, acid or adverse weather. Impervious to harsh conditions for generations of trusted use.
- **ERGONOMIC EYECUPS** made of skin-friendly, non-ageing silicone provide observation comfort and protection against incident light and draught. Simply folded down for use with eyeglasses.
- **CLICLOC-STRAP ATTACHMENT SYSTEM** attaches and releases neck strap with instant, push-button ease, and keeps binoculars hanging straight and action-ready.



10.5X28

WILDLIFE 10.5X28

The 10.5x magnification offers more power and performance without sacrificing weight for detailed nature studies. The light yield in poor weather conditions or at dusk is astounding and will amaze you in all situations.

Item No. 2323

MAGNIFICATION 10,5x | FIELD OF VIEW 88m | WEIGHT 344g



8X24

WILDLIFE 8X24

The small flyweight with 8x magnification is the ideal companion for hiking and mountain/rock climbing. Great optical performance, large field of view and extremely rugged.

Item No. 2321

MAGNIFICATION 8x | FIELD OF VIEW 114m | WEIGHT 346g

WILDLIFE



DON'T SETTLE FOR COMPROMISE

unfailingly reliable, field-tested binoculars to deliver superbly bright, accurate images right to the edge in any situation.

30 YEAR WARRANTY

STEINER-OPTIK



NEW

SKYHAWK 4.0 10X42

From close up to far away, this mid-size SkyHawk 4.0 10x42 delivers bright, crisp images with a bright 42mm aperture. 10x power for great long-range detail, perfect for wide-open country and hilly regions.

Item No. 2339

MAGNIFICATION 10x | FIELD OF VIEW 108m | WEIGHT 746g



NEW

SKYHAWK 4.0 8X42

It is an all-around favourite without added bulk or weight. Versatile enough for observation even in difficult weather conditions. Large field of view and comfortable, calm handling.

Item No. 2338

MAGNIFICATION 8x | FIELD OF VIEW 125m | WEIGHT 754g

Anyone who keeps a close eye on nature experiences a unique fascination. This is exactly what we have developed the **SKYHAWK 4.0** for: to observe nature clear and sharp at any times. The new **SKYHAWK SERIES** offers a unique optic experience and impresses of course with the already legendary STEINER ruggedness.

SKYHAWK 4.0 OVERALL FEATURES

- **STEINER HIGH-CONTRAST-OPTICS** provide bright views, accurate colour and clear, brilliant 3D-images with high contour sharpness for exceptional performance around outdoor activities up to close range of 2m.
- **FAST-CLOSE-FOCUS** central focusing wheel requires minimal, stepless rotation for quick absolute sharpness from close-up to infinity - comfortable, easy to use.
- **DISTANCE-CONTROL-SYSTEM** enables pre-setting of observation distance and sharp focusing by one simple turn of the non-slip XL-focusing wheel.
- **OUTSTANDING RUGGEDNESS** with durable polycarbonate Makrolon housing, Water Pressure Proofness to 3m and the Nitrogen-Pressure-Filling into the optic against fogging up inside at temperature range between -20 °C to +70 °C. Non-slip NBR-Longlife rubber armour protection resists oil, acid or adverse weather. Impervious to harsh conditions for generations of trusted use.
- **ERGONOMIC DESIGN** providing comfortable long-term observations. Ergonomic pliable eyecups made of soft, skin-friendly and non-ageing silicone protect against incident light and draught. Simply to be folded down for use with eyeglasses. Finger depressions for an excellent grip.
- **LIGHTWEIGHT** roof prism design has less bulk to fit into your pack and stay out of the way while observing.
- **EXTENSIVE ACCESSORIES** with case, neoprene-carrying strap, rain protection cap and objective covers.



NEW

SKYHAWK 4.0 10X32

10x magnification for long distance observation that reveals a fascinating wealth of natural details. Provides ample power and superb optical performance.

Item No. 2337

MAGNIFICATION 10x | FIELD OF VIEW 118m | WEIGHT 606g



NEW

SKYHAWK 4.0 8X32

8x32 model is ideal for mobile bird and nature watchers who need the versatility of lightweight, good magnification and wide view, also for long-term observations.

Item No. 2336

MAGNIFICATION 8x | FIELD OF VIEW 133m | WEIGHT 582g

SKYHAWK 4.0 **NEW**



FAST. CLOSE. SHARP.

Feel nature with your eyes.

10 YEAR WARRANTY



Item No. 2308

SAFARI ULTRASHARP 10X42

Versatile 10x magnification and a bright 42mm objective for maximum detail recognition at both close-range and greater distances. For an ambitious entry into outdoor applications.

MAGNIFICATION 10x | FIELD OF VIEW 100m | WEIGHT 720g



Item No. 4477

SAFARI ULTRASHARP 10X26

10x magnification shows you more detail from farther away, perfect for sports events and wildlife observation. Compact, lightweight and multifunctional.

MAGNIFICATION 10x | FIELD OF VIEW 101m | WEIGHT 297g



Item No. 4457

SAFARI ULTRASHARP 8X22

A featherlight, compact sport optic with 8x magnification that looks great, fits your pack, pocket or purse, and is your constant companion for quick use.

MAGNIFICATION 8x | FIELD OF VIEW 125m | WEIGHT 228g

Every traveller, sports enthusiast, and active participant in anything needs a good pair of binoculars to see, understand and enjoy more. These are the ones you need: lightweight design, contemporary styling, comfort and simplicity, and a choice of power and capabilities let you pick the optics that fit you perfectly. Steiner's world-renowned image clarity, accurate colour and field-proven toughness ensure maximum performance from your optics - and more pleasure from your pursuit of adventure.

SAFARI ULTRASHARP OVERALL FEATURES

- **STEINER HIGH-CONTRAST-OPTICS** provide bright views, accurate colour and clear, brilliant 3D-images with high contour sharpness for exceptional performance around outdoor activities.
- **FAST-CLOSE-FOCUS** central focusing wheel requires minimal, stepless rotation for quick absolute sharpness from close-up to infinity- comfortable, easy to use.
- **LIGHTWEIGHT, ERGONOMIC DESIGN** ensures sharp, crisp images in minimal space, so you can keep your optics anywhere.
- **EXTREME RUGGEDNESS** with durable construction, water/fogproofing you can trust to stand up to any cold or wet condition at a temperature range between -20°C to +70°C. Non-slip NBR-Longlife rubber armour protection resists oil, acid or adverse weather.
- **ERGONOMIC EYECUPS** made of skin-friendly, non-ageing silicone provide observation comfort and protection against incident light and draught. Simply folded down for use with eyeglasses (except 10x42).
- **CLICLOC-STRAP ATTACHMENT SYSTEM** attaches and releases neck strap with instant, push-button ease, and keeps binoculars hanging straight and action-ready (10x42).

SAFARI ULTRASHARP



[ORIGINAL SIZE]

COMPACT AND CAPABLE IS NO LONGER A CONTRADICTION

From compact to full-size, optics get you closer to things you enjoy most: photo safaris, ocean cruises, concerts, sports events, and more. Wherever life takes you, these are the perfect companions.





10X30

SAFARI ULTRASHARP 10X30 CF

10x magnification brings you closer to the action. With the added versatility of the Sports-Auto-Focus-Plus you can quickly view objects from 20 m to infinity without refocusing with the added plus of close range from 2m to 20m, all with an amazing vivid image

Item No. 4406

MAGNIFICATION 10x | FIELD OF VIEW 105m | WEIGHT 611g



8X30

SAFARI ULTRASHARP 8X30 CF

Features versatile 8x magnification combined with the Sports-Auto-Focus-Plus always a sharp image from 20m to infinity without refocusing plus a close range from 2 to 20m by a short turn only.

Item No. 4405

MAGNIFICATION 8x | FIELD OF VIEW 120m | WEIGHT 611g

Professional soldiers, officers, ship captains and sailors all rely on Porro prism binoculars for their ruggedness, unmatched quality and no need to focus.

SAFARI ULTRASHARP PRODUKTMERKMALE

- **STEINER HIGH-CONTRAST-OPTICS** provide bright views, accurate colour and clear, brilliant 3D-images with high contour sharpness for exceptional performance around outdoor activities.
- **SPORTS-AUTO-FOCUS** allows razor sharp images from 20m to infinity without refocusing.
- **SPORTS-AUTO-FOCUS PLUS** lets you focus each eyepiece to your vision once for viewing objects as close as 2m (8x25 and 10x25 Models).
- **LIGHTWEIGHT, ERGONOMIC DESIGN** ensures sharp, crisp images in minimal space, so you can keep your optics anywhere.
- **EXTREME RUGGEDNESS** with durable construction, water/fogproofing you can trust to stand up to any cold or wet condition at a temperature range between -20°C to +70°C. Non-slip NBR-Longlife rubber armour protection resists oil, acid or adverse weather.
- **ERGONOMIC EYECUPS** made of skin-friendly, non-ageing silicone provide observation comfort and protection against incident light and draught. Simply folded down for use with eyeglasses.
- **CLICLOC-STRAP ATTACHMENT SYSTEM** attaches and releases neck strap with instant, push-button ease, and keeps binoculars hanging straight and action-ready. (8x30 CF and 10x30 CF only)



10X25

SAFARI ULTRASHARP 10X25

Traveling, hiking or exploring? Become a professional and take Steiner's Mini-Porros always with you. Choose the 10x magnification to get closer to your dream view!

Item No. 2307

MAGNIFICATION 10x | FIELD OF VIEW 100m | WEIGHT 302g



8X25

SAFARI ULTRASHARP 8X25

Thanks to the unseen combination of low weight, compact size and optical quality the Safari Ultrasharp 8x25 is the perfect all-rounder. Don't miss a thing with the wide field of view guaranteed by the 8times magnification (120m).

Item No. 2306

MAGNIFICATION 8x | FIELD OF VIEW 120m | WEIGHT 300g

SAFARI ULTRASHARP



[ORIGINAL SIZE]

COMPACT AND CAPABLE IS NO LONGER A CONTRADICTION

10 JAHRE
GARANTIE

STEINER-OPTIK

MARINE

MOST OF THE WORLD IS WATER. ALL OF IT IS HOME TO STEINER.

It's not just wet. It's a whole different world. Fogbound mornings, afternoons of glaring sun and salt spray, nights like floating on ink. Always in motion, temperatures all over the board, distances that challenge land-bound perceptions. Steiner marine optics were built for this: waterproof, corrosion-proof, always crystal-clear, with special coatings, construction and capabilities specifically created for a water-borne life - from the inventor of compass binoculars.

COMMANDER GLOBAL
COMMANDER LRF
COMMANDER
NAVIGATOR PRO





Item No. 7830

7X50c

COMMANDER GLOBAL

The integrated digital compass with electronic magnetic field measurement and automatic declination adjustment delivers precise readings anywhere in the world. Experience astounding clarity with Diamond Marine lens coatings and high-definition optics.

MAGNIFICATION 7x | FIELD OF VIEW ≥130m | WEIGHT 1147g



The integrated electronic magnetic field measurement ensures absolutely precise bearings, everywhere in the world from the Arctic Circle to the South Seas. Analogically superimposed on the lower edge of the image, the display is especially easy to read without disturbing the field of view. The intuitive operation and the compensation for inclination angles make handling easy and reliable.



The **COMMANDER GLOBAL** binocular upgrades marine-standard 7x magnification and 50mm objectives with Diamond-Marine lens coating and high definition optics for astounding clarity, plus an integrated digital compass with electronic magnetic field measurement and automatic declination adjustment for precise readings anywhere in the world. Intuitive to use, easy to read, with a distance-to-object reticle, the Commander Global is the most capable binocular on the water.

..... COMMANDER OVERALL FEATURES

- **DIGITAL WORLDWIDE COMPASS** shows precise, easy to read bearings superimposed on the edge of the field of view, plus illumination and reticle for finding distance and object.
- **STEINER HIGH-DEFINITION-OPTICS** for clear images in full contrast with maximum resolution.
- **STEINER DIAMOND-MARINE-COATING** is a unique formula that reduces glare, enhances clarity and maximizes light transmission for optimized viewing in hazy light and after dark.
- Top performing optics by **SPORTS-AUTO-FOCUS SYSTEM** that lets you focus each eyepiece to your vision once, then remains razor sharp from 20m to infinity, no more chasing focus on moving targets, 3D-images and the specification 7x magnification and 50mm objective produce a wide, stable view and bright, clear images in all conditions.
- **LARGE FIELD OF VIEW** for the utmost overview in every situation.
- **LEGENDARY RUGGEDNESS** with durable polycarbonate Makrolon housing that withstands 11G of impact, Floating Prism System to absorb severe shock, impact and abuse without damage, Water Pressure Proofness to 10m, Nitrogen-Pressure-Filling into the optic against fogging up inside at temperature range between -40°C to +80 °C and the protective, hydrophobic Steiner Nano-Protection on the lenses making water sheeting off and dirt, dust, snow are repellent for easy cleaning and clear view.
- **COMFORT-BALANCE-SYSTEM** with NBR-Long Life rubber armoring (for better grip, protection and slip resistance on board), Steiner ComfortGrip thumb rests, versatile ErgoFlex Eyecups and the **unique Memory-Ocular** saving personal diopter settings.
- **HIGH-END ACCESSORIES** with hardcase, comfortably padded, high-visibility floating strap, ClicLoc neoprene-carrying strap for instant, push-button ease, rain protection cap and objective covers.

COMMANDER GLOBAL



THE WORLDWIDE FLAGSHIP OF MARINE BINOCULARS

The pinnacle of craftsmanship and the ultimate binocular/digital compass combination for confident navigation of high seas around the world.





7X50 LRF

COMMANDER LRF 7X50

Position and distance control to navigational targets and other important landmarks, paired with outstanding optical quality, typical for the Steiner Commander series. For better approach to harbours and river estuaries.

Item No. 2329

MAGNIFICATION 7x | WEIGHT 1295 g | WIDTH 206 mm | HEIGHT 161 mm



Lightning speed

Rangefinding takes place at the press of a button using the latest in laser technology. Distance is calculated using an invisible laser pulse and displayed in the binoculars. You can track objects at varying distances using continuous measurements in scan mode without refocusing. This feature is especially helpful for small or moving targets.



No product epitomises the legendary STEINER value for innovation and tradition better than the new **COMMANDER 7X50 LRF**. These binoculars combine the high definition optics of the proven Commander Series with innovative laser rangefinding technology for determining position, distance control to navigational targets and other important landmarks. The blend of functionality, ruggedness, precision and comfort define a new top class for the Commander series.

..... COMMANDER LRF OVERALL FEATURES

- **STEINER HIGH-DEFINITION-OPTICS**
Sharp, high contrast and high-resolution images. Top class coating technology for outstanding image quality and light transmission
- **STEINER SPORTS-AUTO-FOCUS**
Once set, the unique STEINER Sports-Auto-Focus always provides razor-sharp images from 20 m to infinity - without needing to refocus.
- **RANGEFINDING UP TO 1700 METERS**
Exact rangefinding up to 1700 m using laser technology. Calculate precise distances directly while observing anywhere, even when estimates are challenging and inaccurate.
- **SCAN MODE FOR MOVING TARGETS**
- **LEGENDARY RUGGEDNESS**
The durable and long-lasting Makrolon housing made from polycarbonate is rugged through temperatures ranging from -15°C to 55°C. The non-slip NBR-Longlife rubber armouring resists oil, acids or adverse weather. The surface retains a secure grip even in extreme damp, heat or cold.
- **COMFORT-BALANCE SYSTEM**
NBR-Longlife rubber armouring, STEINER ComfortGrip thumb rests, versatile ErgoFlex eyecups and Memory-Ocular for storing personal diopter settings.
- **WATERPROOF UP TO 5m**

..... USES FOR THE COMMANDER LRF 7X50 IN MARITIME SETTINGS:

- As a backup for GPS (positioning through distance measurements) and for tracking other ships and vessels to minimise the risk of potential collision.
- For identifying the position of accident victims in the water (MOB) and better assist rescue vehicles arriving by water and air, and for more precise estimates of displacement and deviation due to current, wind and sea swell.

COMMANDER LRF 7X50

NEW

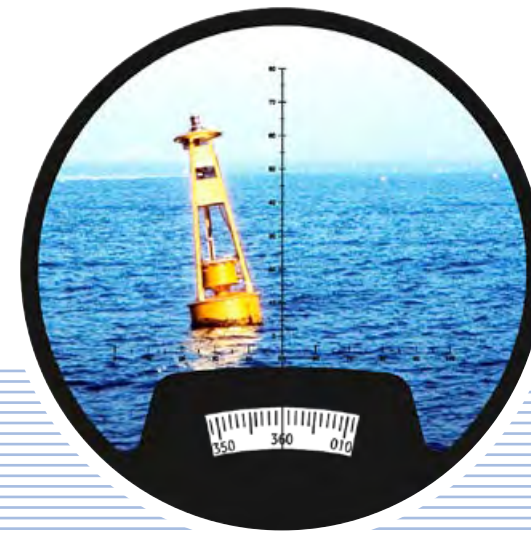


BE IN THE LEAD BY DETERMINING DISTANCE PRECISELY

Laser distance measurement in conjunction with 7x50 Commander standard.

THE COMMANDER

UNBREAKABLE. UNMATCHED. INDISPENSABLE.



LARGEST AND MOST PRECISE COMPASS

With a 40 mm-diameter, the large integrated HD-Stabilized compass of the Commander 7x50c is a market leader. The bearing works thanks to the size of the compass and the optimized fluid damping quickly, accurately and reliably, even under extreme conditions. A user-friendly illumination and a precision reticle for exact size or distance calculation round off the high performance compass and give you that little bit of extra security on high seas. Rely on your safest navigational equipment on board.

XL FIELD OF VIEW

Rounding out the optical performance of the Commander with the best possible overview in any situation. The field of view was maximized by around 12% to 145m / 1000m. Significantly brighter, clearer images will thus provide perfect safety at sea.

THE COMMANDER AMONG BINOCULARS

The new Commander Series is unmatched in terms of technology and innovation. With its razor-sharp High-Definition-Optics and the most accurate analog compass as well as the optimum combination of functionality, ruggedness, precision and comfort the Commander binoculars define a new class. For the highest ambitions on the water, where there is no compromise.



Item No. 2305

7X50c

COMMANDER 7X50c

Additionally integrates a fluid-dampened, HD stabilized illuminated compass with ranging reticle, creating one accurate and invaluable navigation tool.

MAGNIFICATION 7x | FIELD OF VIEW ≥145m | WEIGHT 1190g



Item No. 2304

7X50

COMMANDER 7X50

Delivers exceptional image clarity, sharp edge-to-edge-definition and contrast, as well as high light transmission for navigating in low light or fog.

MAGNIFICATION 7x | FIELD OF VIEW ≥145m | WEIGHT 1090g



The new **COMMANDER SERIES** is unmatched in terms of technology and innovation. With its razor-sharp High-Definition-Optics and the most accurate analog compass as well as the optimum combination of functionality, ruggedness, precision and comfort the Commander binoculars define a new class. For the highest ambitions on the water, where there is no compromise.

..... COMMANDER OVERALL FEATURES

- **STEINER HIGH-DEFINITION-OPTICS** for clear images in full contrast with maximum resolution.
- **STEINER DIAMOND-MARINE-COATING** is a unique formula that reduces glare, enhances clarity and maximizes light transmission for optimized viewing in hazy light and after dark.
- Top performing optics by **SPORTS-AUTO-FOCUS SYSTEM** that lets you focus each eyepiece to your vision once, then keeps razor sharp from 20m to infinity, no more chasing focus on moving targets, 3D-images and the specification 7x magnification and 50mm objective produce a wide, stable view and bright, clear images in all conditions.
- **XL-FIELD OF VIEW WITH 145 M/1000M** for the utmost overview in every situation.
- **LARGEST AND MOST PRECISE HD-STABILIZED COMPASS** with user-friendly illumination and integrated precision reticle.
- **LEGENDARY RUGGEDNESS** with durable polycarbonate Makrolon housing that withstands 11G of impact, Floating Prism System to absorb severe shock, impact and abuse without damage, Water Pressure Proofness to 10m, Nitrogen-Pressure-Filling into the optic against fogging up inside at temperature range between -40°C to +80°C and the protective, hydrophobic Steiner Nano-Protection on the lenses making water sheeting off and dirt, dust, snow are repellent for easy cleaning and clear view.
- **COMFORT-BALANCE-SYSTEM** with NBR-Long Life rubber armouring (for better grip, protection and slip resistance on board), Steiner ComfortGrip thumb rests, versatile ErgoFlex Eye-cups and the **unique Memory-Ocular** saving personal diopter settings.
- **HIGH-END ACCESSORIES** with hardcase, comfortably padded, 3M-ClickLoc floating strap, ClickLoc neoprene-carrying strap for instant, push-button ease, rain protection cap and objective covers.

COMMANDER



**UNBREAKABLE.
UNMATCHED.
INDISPENSABLE.**

The new Commander: Unmatched high class and precise, indistructible robust and indispensable reliable.

30 YEAR WARRANTY



NAVIGATOR PRO 7X50c

Delivers excellent image clarity, sharp definition and contrast. 50 mm objective diameter for bright pictures in low light.

Item No. 7655

MAGNIFICATION 7x | FIELD OF VIEW ≥ 123 m | WEIGHT 1030g



NAVIGATOR PRO 7X50

Carries additionally a large, HD fluid-damped and illuminated analog compass for easy-to-read navigation.

Item No. 7155

MAGNIFICATION 7x | FIELD OF VIEW ≥ 123 m | WEIGHT 1110g

The **NAVIGATOR PRO SERIES** is the choice for charterers, water sports enthusiasts, weekend anglers and hobby sailors. It offers exceptional performance for the price with many of the features found on premium, world-famous STEINER marine binoculars. They are reliable, simple to use and boast legendary STEINER ruggedness.

NAVIGATOR PRO OVERALL FEATURES

- **STEINER HIGH-CONTRAST-OPTICS** provide bright, sharply contoured images with natural colour definition for outstanding viewing quality suitable for both beginners and professionals.
- Perfect attunement for on-water use by **SPORTS-AUTO-FOCUS SYSTEM** that lets you focus each eyepiece to your vision once, then keeps razor sharp from 20m to infinity, no more chasing focus on moving targets, 3D-images and the specification 7x magnification with wide, stable images for tracking boats, buoys and bridge numbers even in rough water.
- **MOST PRECISE FLUID-DAMPENED, SHOCK ABSORBING COMPASS** in its class with illumination and bearing mark.
- **LEGENDARY RUGGEDNESS** with durable polycarbonate Makrolon housing, Floating Prism System to absorb severe shock, impact and abuse without damage, Water Pressure Proofness to 5m and the Nitrogen-Pressure-Filling into the optic against fogging up inside at temperature range between -20°C to $+60^{\circ}\text{C}$.
- **ERGONOMIC DESIGN** providing a NBR-Long Life rubber armouring (for better grip, protection and slip resistance on board) and soft, pliable eyecups made of skin-friendly silicon.
- **EXTENSIVE ACCESSORIES** with case, ClicLoc neoprene-carrying strap for instant, push-button ease, rain protection cap and objective covers.



NAVIGATOR PRO 7X30c

Compact, versatile and lightweight, perfect for short gateways, spontaneous sailing trips or emergency gear bag. Also for use on shore.

Item No. 7645

MAGNIFICATION 7x | FIELD OF VIEW ≥ 123 m | WEIGHT 520g



NAVIGATOR PRO 7X30

Additionally equipped with an HD stabilized compass in compact frame, for clear images and reliable headings in an easy-handling size.

Item No. 7145

MAGNIFICATION 7x | FIELD OF VIEW ≥ 123 m | WEIGHT 560g

NAVIGATOR PRO



NEVER COMPROMISE PERFORMANCE

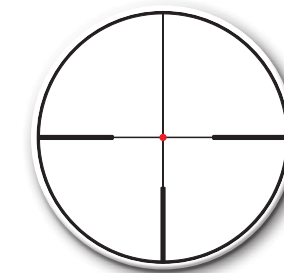
Serious optics for those who take recreational time on the water seriously, with the clear image, total reliability and remarkable value. STEINER marine optics are known for. Because it's fun.

10 YEAR WARRANTY

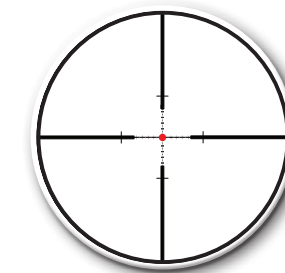
	HUNTING RIFLESCOPES							SHOOTING-RIFLESCOPES				
	Ranger 1-4x24	Ranger 2-8x42	Ranger 2.5-10x50	Ranger 3-12x56	Ranger 4-16x56	Ranger BC 3-12x56	Ranger BC 4-16x56	M5Xi 3-15x50	M5Xi 5-25x56	M8Xi 1-8x24	M7Xi 4-28x56	M7Xi IFS 4-28x56
Item No.	8760900204	8761900204	8764900204	8762900204	8763900204 * 8763900201 ****	8762904604	8763904604	8707000101	8704000101	8723000226	8719000101	8719003601
Effective objective diameter	24,0 - 13,3 mm	42,0 - 25,5 mm	50,0 - 31,0 mm	56,0 - 37,8 mm	56,0 - 50,0 mm	56,0 - 37,8 mm	56,0 - 50,0 mm	50,0 - 31,2 mm	56,0 - 49 mm	24,0 - 10,3 mm	56,0 - 37,8 mm	56,0 - 37,8 mm
Magnification min. / max.	1 x / 4 x	2 x / 8 x	2,5 x / 10 x	3 x / 12 x	4 x / 16 x	3 x / 12 x	4 x / 16 x	3 x / 15 x	5 x / 25 x	1 x / 8 x	4 x / 28 x	4 x / 28 x
Weight	490 g	585 g	640 g	705 g	720 g	705 g	720 g	920 g	1.000 g	650 g	950 g	1.150 g
Length	262 mm	303 mm	315 mm	337 mm	368 mm	337 mm	368 mm	365 mm	422 mm	260 mm	387 mm	390 mm
Temperature range	-25 °C to +65 °C	-25 °C to +65 °C	-25 °C to +65 °C	-25 °C to +65 °C	-25 °C to +65 °C	-25 °C to +65 °C	-25 °C to +65 °C	-25 °C to +63 °C	-25 °C to +63 °C	-46 °C to +63 °C	-46 °C to +63 °C	-32 °C to +63 °C
Exit pupil	12,0 - 6,0 mm	12,0 - 5,3 mm	12,0 - 5,0 mm	12,0 - 4,7 mm	12,0 - 4,5 mm	12,0 - 4,7 mm	12,0 - 4,5 mm	10,4 - 3,3 mm	9,8 - 2,2 mm	12,0 - 4,5 mm	12,0 - 4,7 mm	12,0 - 6,0 mm
Field of view at 100 m	37 - 9,2 m	18,3 - 4,7 m	14,7 - 3,7 m	12,0 - 3,0 m	9,2 - 2,3 m	12,0 - 3,0 m	9,2 - 2,3 m	12,1 - 1,4 m	7,2 - 1,4 m	34,2 - 4,5 m	9,0 - 1,4 m	9,0 - 1,4 m
Eye relief	90 mm	90 mm	90 mm	90 mm	90 mm	90 mm	90 mm	90 mm	90 mm	87 mm	87 mm	87 mm
Diopter setting	-3 to +2	-3 to +2	-3 to +2	-3 to +2	-3 to +2	-3 to +2	-3 to +2	-3 to +2	-3 to +2	-3 to +2	-3 to +2	-3 to +2
Parallax adjustment	100 m	100 m	100 m	100 m	50 m to infinity	100 m	50 m to infinity	50 m to infinity	50 m to infinity	100 m	50 m to infinity	50 m to infinity
Reticle	4A-I	4A-I	4A-I	4A-I	4A-I G2B Mil-Dot	4A-I	4A-I	G2B Mil-Dot MSR-2	G2B Mil-Dot B4I-BE2	DMR8i	G2B Mil-Dot MSR-2	G2B Mil-Dot MSR-2
Focal plane location	2nd focal plane	2nd focal plane	2nd focal plane	2nd focal plane	2nd focal plane	2nd focal plane	2nd focal plane	1st focal plane	1st focal plane	2nd focal plane	1st focal plane	1st focal plane
Reticle adjustment per click at 100 m	1 cm	1 cm	1 cm	1 cm	1 cm	1 cm	1 cm	1 cm	1 cm	1 cm	1 cm	1 cm
Max. adjustment in cm at 100m - elevation/windage	300 cm / 300 cm	280 cm / 280 cm	210 cm / 210 cm	170 cm / 170 cm	170 cm / 110 cm	170 cm / 170 cm	170 cm / 110 cm	260 cm / 120 cm	260 cm / 120 cm	270 cm / 60 cm	270 cm / 60 cm	270 cm / 60 cm
Objective tube diameter	30 mm	51 mm	57,5 mm	63,5 mm	63,5 mm	63,5 mm	63,5 mm	34 mm	34 mm	34 mm	62 mm	62 mm
Center tube diameter	30 mm	30 mm	30 mm	30 mm	30 mm	30 mm	30 mm	34 mm	34 mm	34 mm	34 mm	34 mm
Eye piece diameter	44,3 mm	44,3 mm	44,3 mm	44,3 mm	44,3 mm	44,3 mm	44,3 mm	44,3 mm	44,3 mm	44,3 mm	44,3 mm	44,3 mm
Reticle illumination	11 steps (6x night, 5x day) and OFF position between each step	11 steps (6x night, 5x day) and OFF position between each step	11 steps (6x night, 5x day) and OFF position between each step	11 steps (6x night, 5x day) and OFF position between each step	11 steps (6x night, 5x day) and OFF position between each step	11 steps (6x night, 5x day) and OFF position between each step	11 steps (6x night, 5x day) and OFF position between each step	11 steps (7x night, 4x day) and OFF position between each step	11 steps (7x night, 4x day) and OFF position between each step	11 steps (6x night, 5x day) and OFF position between each step	11 steps (6x night, 5x day) and OFF position between each step	11 steps (6x night, 5x day) and OFF position between each step
High-Performance-Optics	High Contrast	High Contrast	High Contrast	High Contrast	High Contrast	High Contrast	High Contrast	High Contrast	High Contrast	High Contrast	High Contrast	High Contrast
Steiner Nano-Protection	-	-	-	-	-	-	-	-	-	-	-	-
Water-Pressure Proof	up to 2 metres	up to 2 metres	up to 2 metres	up to 2 metres	up to 2 metres	up to 2 metres	up to 2 metres	up to 10 metres	up to 10 metres	up to 10 metres	up to 20 metres	up to 20 metres
Steiner Nitrogen-Pressure-System	yes	yes	yes	yes	yes	yes	yes	yes	yes	yes	yes	yes
Accessories	Objective- and ocular lens cover	Objective- and ocular lens cover	Objective- and ocular lens cover	Objective- and ocular lens cover	Objective- and ocular lens cover	Objective- and ocular lens cover	Objective- and ocular lens cover	Objective- and ocular lens cover	Objective- and ocular lens cover	Objective- and ocular lens cover	Objective- and ocular lens cover	Objective- and ocular lens cover
Warranty	10 years ****	10 years ****	10 years ****	10 years ****	10 years ****	10 years ****	10 years ****	10 years ****	10 years ****	10 years ****	10 years ****	10 years ****

	RED DOT SIGHT		SIGHTS	
	MRS Micro Reflex Sight	MRS Micro Reflex Sight	S332 Sight	S432 Sight
Item No.	8700000000	8700000003	8793900103	8794900103
Item No. with rail	-	-	-	-
Rail	Picatinny	Universal	-	-
Effective objective diameter	21 x 15 mm	21 x 15 mm	32 mm	32 mm
Magnification min. / max.	1 x	1 x	3 x	4 x
Weight with rail	<70 g	<70 g	-	-
Weight without rail	-	-	590 g	640 g
Length	46 mm	46 mm	143 mm	143 mm
Temperature range	-25 °C to +55 °C	-25 °C to +55 °C	-30 °C to +65 °C	-30 °C to +65 °C
Exit pupil	-	-	9,5 mm	7 mm
Field of view at 100 m	-	-	14,1 m	11,8 m
Eye relief	-	-	≥ 80 mm	≥ 80 mm
Diopter setting	-	-	-3 to +3	-3 to +3
Parallax adjustment	-	-	100 m	100 m
Reticle	-	-	Rapid-Dot	Rapid-Dot
Focal plane location	-	-	-	-
Reticle adjustment per click at 100 m	1 MOA @ 100 m 30 Clicks per Rotation	1 MOA @ 100 m 30 Clicks per Rotation	1 cm	1 cm
Max. adjustment in cm at 100m - elevation/windage	90 MOA / 90 MOA	90 MOA / 90 MOA	50 MOA / 50 MOA	50 MOA / 50 MOA
Objective tube diameter	-	-	-	-
Center tube diameter	-	-	-	-
Eye piece diameter	21 x 15 mm	21 x 15 mm	-	-
Reticle illumination	4 steps: automatic, low, medium, high	4 steps: automatic, low, medium, high	8 steps: (5x day, 2x night 1x nightvision)	8 steps: (5x day, 2x night 1x nightvision)
High-Performance-Optics	High Contrast	High Contrast	High Contrast	High Contrast
Steiner Nano-Protection	-	-	-	-
Water-Pressure Proof	up to 2 metres	up to 2 metres	up to 10 metres	up to 10 metres
Steiner Nitrogen-Pressure-System	-	-	yes	yes
Accessories	-	-	-	-
Warranty	10 years ****	10 years ****	10 years ****	10 years ****

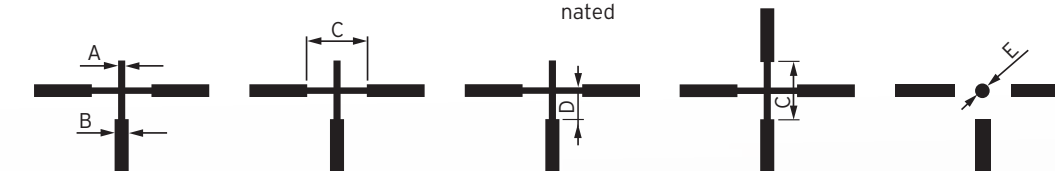
RETICLE SUBSTENSIONS 4A-I, 0-I AND G2B MIL-DOT



Reticle 4A-I illuminated



Reticle G2B Mil-Dot illuminated



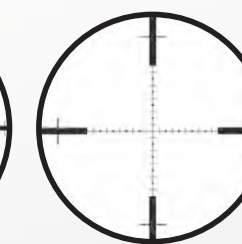
Substensions in cm at 100 m at min./max. magnification.

	3-15x56	2-10x50	1,6-8x42	1-5x24
A	2,5 / 0,5	3,6 / 0,7	4,7 / 0,9	7,4 / 1,5
B	12 / 2,4	17,5 / 3,6	22 / 4,5	35 / 7
C	487 / 96	700 / 142	896 / 182	1411 / 287
D	244 / 48	350 / 71	448 / 91	706 / 143
E	5,5 / 1,1	7,9 / 1,6	10 / 2,1	16 / 3,2

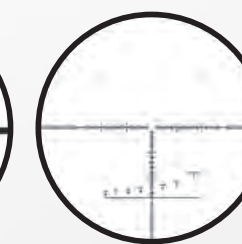
RETICLES M5Xi/M7Xi/M7Xi IFSi/M8Xi



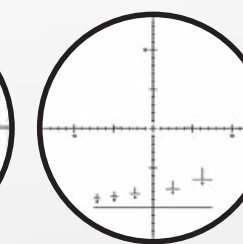
MSR2



G2B MIL-DOT



DMR8i



B4I-BE2

ACCESSORIES

All STEINER products come with extensive accessories. Please see the details on each product page or the technical data pages 50 - 52.

RANGER



FLIP COVER FOR RIFLESCOPES

Lens and eyepiece protection for Ranger rifle scopes. Practical folding mechanism with no-noise system.

Item-No. 76910000
(fits Ranger 1-4x24-Models)

Item-No. 76920000
(fits Ranger 2-8x42-Models)

Item-No. 76930000
(fits Ranger 3-12x56
and 4-16x56-Models)



RANGER BALLISTIC CAPS

The new Ranger BC riflescopes are equipped with five different cap sets, covering all important hunting bullets and calibers. Depending on the used caliber the corresponding cap is attached, then you just need a precise and quick reticle adjustment for a perfect shot.

Item-No. 76940000
(fits Ranger 3-12x56
and 4-16x56-Models only)



COMFORT-HARNESS



Comfort Harness permits hands-free and comfortable binocular carry. Raise the binocular to your eyes for quick viewing, return it to your chest when done. Binocular is securely attached to the adjustable harness, removable quick-release buckles. Relieves neck and back muscles and is secure and easy to use.

Item-No. 76900000
(fits all models, except compacts)



FLOATING STRAP

Floating Strap padded in a visible yellow, water-repellent, long-lasting waterproof jacket with integrated 3M fluorescent strip that keeps the binocular floating and reflects also in darkness. For maximum security on board.

Item-No. 76800003
(fits Commander Global, Commander
and Navigator Pro 7x50 Models)

Art.-Nr. 76800004
(fits Navigator Pro 7x30
Models only)

STEINER WARRANTY. PERFORMANCE YOU CAN PASS DOWN.

With every STEINER optical product comes a lifelong relationship, with you and yours. We build trusted optics for life's defining moments. Pursuit of these moments demands quick detection, location and identification of your objective through your most important sense, vision. Be it in pursuit of wild life, a marine bearing, law enforcement suspect or military combatant, our commitment to quality and the STEINER Warranty is our promise that Nothing Escapes You.

10 YEAR WARRANTY

30 YEAR WARRANTY

The world wide 10 to 30 year STEINER Warranty means we stand behind our products. Over half a century of experience building rugged and reliable, mil-spec product and supplying them to professionals, amateurs and also armed forces all around the world allows us to have this

kind of confidence. We at STEINER are totally committed to the very highest standards of quality, dependability, and most of all customer satisfaction. Our Warranty assures you of that commitment. However, should one become defective within the warranty period, for any

reason other than theft or deliberate misuse, we will service it at no charge - no questions asked. We kindly ask for your understanding that wear parts such as rubber armouring, carrying straps, eyecups or lens covers are not included in the scope of warranty.

If you have already purchased a STEINER product, kindly fill out the warranty registration: www.steiner.de

CUSTOMER SERVICE

Need repair or spare parts?
Have questions or comments, need information or advice?
Whenever you need help: please contact our expert team.

INTERNATIONAL
E-Mail: service@steiner.de
Tel: +49 (0) 921 7879-815

FACEBOOK.COM/
STEINERHUNTING
@STEINER_EUROPE

FACEBOOK.COM/
STEINERMARINE
YOUTUBE.COM/
STEINEROPTIK

FACEBOOK.COM/
STEINEROUTDOOROPTICS
WWW.STEINER.DE

STEINER
Nothing Escapes You