

 BERETTA

---

# 2018 CATALOGUE

---

A NEW YEAR HUNTING THE WILDEST EMOTIONS











**YOU CAN ALWAYS  
COUNT ON A BERETTA.**

**WE PUT ALL OF OUR HEART,  
OUR MIND, THE EXPERIENCE,  
AND THE WILL TO GIVE YOU  
ALWAYS SOMETHING NEW,  
SURPRISINGLY NICE,  
SUPER RELIABLE,  
THAT WILL GIVE YOU JOY EVERY  
TIME YOU USE IT.**

**WELCOME TO BERETTA,  
WHERE 500 YEARS OF TRADITION  
GO HAND IN HAND WITH THE MOST ADVANCED  
TECHNOLOGIES TO CREATE  
PRODUCTS THAT ARE UNIQUE.**



# HUNTING

HUNTING IS OUR PASSION. IT'S A TRADITION WE PASS DOWN THROUGH GENERATIONS, FROM FATHER TO SON, AND IT REMINDS US OF OUR MOST GENUINE VALUES. FOR THOSE WHO LOVE HUNTING AND THE OUTDOORS, BERETTA OFFERS A WIDE RANGE OF PRODUCTS SPECIFICALLY DESIGNED TO PROVIDE MAXIMUM COMFORT AND SAFETY, PERFORMANCE RIGHT AT THE TOP OF ITS CATEGORY AND ALL THE QUALITY THAT ONLY A BRAND WITH 500 YEARS OF EXPERIENCE CAN GUARANTEE.





# Field over and under

**Beautiful, accurate and reliable over the years: Beretta's range of over and under field guns, with their cross-bolt locking system that is now something of a signature, combine tradition with the highest technology.**

All guns in the range feature Beretta's exceptional Steelium barrels: the gun lasts longer, diminishing recoil and muzzle rise whilst throwing excellent, consistent patterns.



**687 EELL Diamond Pigeon**

Exquisite game scenes hand finished by Beretta's master engravers.



**687 EELL Diamond Pigeon**

Intricate scroll engravings hand finished by Beretta's master engravers.



**690 Field III**

A jewel of a gun. Beautiful to look at, even better to shoot.



**690 Field I**

The latest addition to the range. Elegant, accurate and built to last.



**686 Silver Pigeon I**

Outstanding value for money. The dream made possible.

# 690 FIELD I

The 690 FIELD I is the latest in Beretta's series of boxlock over and unders. Elegant, accurate and built to last. You can choose among a wide range of configurations. In addition to inheriting the technical functional and aesthetic features of its predecessor, like the Steelium Optimabore HP barrels, the Microcore pad, the solid-base top rib, the double-fenced top of the receiver and the selected european walnut wood with the enhanced BTS oil finishing process, the new 690 Field I introduces three interesting features:



**Perfectly balanced.**

The 690 Field I, despite its relatively light weight, feels extremely solid and pleasing to handle, thanks to the perfect balancing.

**Traditional extractors.**

The 690 Field I feature a different automatic cartridge extraction system. The extractors derive from the premium segment over and unders for increased durability.

**Rich floral engraving.**

The slim and elegant receiver of the 690 Field I is beautifully decorated with a refined scroll engraving made with the exclusive Beretta's laser technology. The rich floral theme in renaissance style was created by Beretta's master engravers and developed together with the company laser engraving engineers.

**Outstanding receiver.**

The receiver features a double-fenced top, typical of the most refined over and unders, and a wider surface that improves balance, stability and durability of the gun.

**Slim forend.**

Slim and rounded forend, for a better grip and a more streamlined profile.

**Solid-base top rib.**

The 690 Field I top rib has a solid base, like the most refined shotguns. This solution provide a better structure and aesthetic.



**690 Field I**  
Available in 12g and 20g

**Microcore pad.**

Superior softness, lightness and smoothness for the best recoil pad ever made by Beretta. Available in several height, Microcore allows to obtain the perfect trim before and after the shot.

**Steelium barrels.**

Exclusive tri-alloy steel, deep drilling, cold hammer-forging and vacuum distension are the "ingredients" of the world's best barrel, providing unrivaled safety and superior ballistics.

**Optimabore HP.**

Interchangeable-chokes barrels, designed for the best performance with both lead and HP steel shots.





# 690 FIELD III

The traditional Beretta over and under has been combined with the highest technology to create this beautiful, accurate and elegant shotgun. Steelium barrels guarantee absolute precision while minimising weight, creating a jewel of a gun. Welcome to Beretta's perfect fusion of technology and tradition.

#### **Selected wood**

Every stock is carefully crafted, oil finished and checked by the master Beretta stockmakers to meet the highest quality standards. The exclusive Beretta BTS oil finishing process enhance the natural look of the wood and make repairs much easier.

#### **Outstanding receiver**

The receiver features a double-fenced top, typical of the most refined over and unders, and a wider surface that improves balance, stability and durability of the gun.

#### **Slim forend**

Slim and rounded forend, for a better grip and a more streamlined profile.

#### **Solid-base top rib**

The 690 Field III top rib has a solid base, like the most refined shotguns. This solution provide a better structure and aesthetic.



**690 Field III**  
Available in 12g and 20g

#### **Microcore pad**

Superior softness, lightness and smoothness for the best recoil pad ever made by Beretta. Available in several height, Microcore allows to obtain the perfect trim before and after the shot.

#### **New engraving**

The engraving, for sure one of the world's best in its category, is rollmarked and crafted with care in any detail, enriching the receiver.

#### **Steelium barrels**

Exclusive tri-alloy steel, deep drilling, cold hammer-forging and vacuum distension are the "ingredients" of the world's best barrel, providing unrivaled safety and superior ballistics.

#### **Optimabore HP**

Interchangeable-chokes barrels, designed for the best performance with both lead and HP steel shots.





# 687 EELL DIAMOND PIGEON

The 687 EELL is the absolute top of the line of Beretta's 680-series over-under shotguns. It features sideplates that act as extra canvas for the lavish hand-chased engraving, as well as a specially-selected walnut stock that gives it a true heirloom quality. But while it certainly figures well while on display, the Diamond Pigeon's worth as a game gun is equally striking. With the point of balance right at the hinge-pin, it is a shotgun that comes up naturally to the shoulder while still having enough of a lively feeling forward of the supporting hand.



**687 EELL Diamond Pigeon floral**



**687 EELL Diamond Pigeon game scene**





# 486 <sup>by</sup> Marc Newson.

“To be asked to design for Beretta, one of the oldest companies in the world with its roots in the Italian Renaissance, was a great honour. The main focus for my design of the 486 was to simplify and rationalise all the surfaces. Specifically streamlining the area of the action. I believe that my vision to create an innovative and modern design while respecting the DNA of the product typology has been spectacularly achieved”.

### Wood-bridge

The traditional tail of the receiver has been lowered allowing the wood to separate the receiver and the safety/selector like a wooden bridge over the steel.

### New lever design

This element has been specially conceived to emphasize its independence from the rest of the shotgun.

### Edgeless receiver

The receiver is edgeless and the lines flow through the entire surface of the shotgun with no sharp edges or breaks, elevating the concept of “round-body”.



**486 by Marc Newson**  
Available in 12, 20 and 28 gauge

# 486 *Parallelo*

Surprisingly light and easy-handling, the new 486 Parallelo Beretta unites the charm of the best gunsmithing tradition with the round body receiver design and with modern and innovative technologies. The result is a classic and elegant shotgun, with beautiful selected walnut, that has a traditional yet very contemporary design. A shotgun which is, on the same time, a reliable, safe and accurate firearm.



**486 Parallelo**

### Unique trigger mechanism

The trigger mechanism is extremely reliable thanks to the “V” shaped hammer springs and to the rebounding hammers which guarantee crisp and fast trigger pulls. The trigger plate contains all the parts of the firing mechanism, assuring faster and easier disassembly for cleaning and inspection.

### Triblock technology

The barrels are matched thanks to the new Beretta Triblock system in order to deliver superior aesthetic and elegance which reflect the style of the classic demibloc shotguns. The care taken in producing the tapered external profile of the tubes enhances the instinctive aiming.

### Environmentally friendly ejection / extraction selector

The exclusive selector switch, located on the fore-end iron, provides for automatic ejection or manual extraction, which is an environmentally friendly way of keeping spent shells from littering fields.

### Slim forend

The fore-end features a push-button release mechanism located on the fore-end tip. The fore-end iron presents an adjusting device in order to maintain a constant tip fore-end iron fit. The result is an increase functionality and life of the parts.





# FIELD SEMI AUTO

## THE 9 REASONS TO CHOOSE THE BERETTA SEMI AUTO TECHNOLOGY

**1 THE BEST RECOIL REDUCTION.**

Kick-Off, Kick-Off 3 and Kick-Off Mega ensure you up to 70% recoil reduction giving you more stability, comfort and control for faster target acquisition. More comfort for you, especially when you enjoy shooting hundreds of shots in a single day, and enhanced durability.

**2 ALL-LOAD PROVEN RELIABILITY, FROM 24G. TO 64 GR.**

Beretta gas-operating system B-Link is world's most reliable system. The closing force is stronger because, when the reloading cycle begins, the energy available to unlock the bolt is significantly higher. Higher energy when opening allows higher closing force, preventing the bolt to unlock when it is not supposed to do it.

**3 UNBELIEVABLE RELOADING SPEED (+36%).**

The Beretta gas-operated system is fast like an eye's blink. That's why it's called B-Link. The power of the gas-system, combined with the precision of the rotating bolt, ensure you a fast, reliable and smart cycling. You can spend all your magazine's cartridges before the 1st round touches the ground.

**4 CLEANER THAN EVER AND EASIER TO CLEAN.**

With B-Link, the only weak point of the gas-operating system has been practically reduced to zero. The re-engineering of gas ports and the systematic reduction of all the mechanical frictions the dirt is reduced to the minimum terms. You will experience the lowest maintenance need ever, and a smart, easy, fast and secure cleaning.

**5 LOWEST MUZZLE JUMP.**

The Beretta semiautomatic shotgun gives you the lowest muzzle jump ever combining the stunning recoil reduction of the Kick-Off devices to the unique ballistic features of the Steelium OptimaBore HP barrels. More control after each shot, better performance for each next one.

**6 PERFECT PATTERNS ON EVERY SHOT.**

The ingredients of the stunning accuracy of the Beretta Steelium barrels are: the exclusive tri-alloy Beretta Steel (Ni, Cr, Mo), the deep drilling, the cold hammering process and the vacuum distension. Every OptimaBore HP barrel profile has been specifically designed and tested to provide perfect accuracy with every type of shells: lead, steel and steel High Performance.

**7 THE ONLY SHOTGUN THAT SPEAKS WITH YOUR SMARTPHONE.**

Thanks to GunPod2 the highlights of your hunting sessions, along with photos and videos, finally collected in a handy digital archive, easy to use. You simply have to launch the app and put your smartphone in your pocket.

**8 ERGONOMICS AND COMFORT IN EVERY COMPONENT.**

Microcore pad: softer than gel, lighter than rubber and perfectly slipping, available in several dimensions to customize your length of pull. The B-Lok cap: an innovative magazine cap giving perfect and secure closing with just 60 degrees rotation instead of multiple turns.

**9 DESIGNED FOR THE FUTURE, NEVER FORGETTING TRADITION.**

The Beretta in-house design team works every day to match design with functionality, giving you original and aesthetically beautiful, simple solutions that optimize the shape, weight and ease of use.



A400 Xtreme Camo Max5



A400 Xplor Unico



A400 Xtreme Camo Max5 LH



A400 Xplor Action 12 ga.



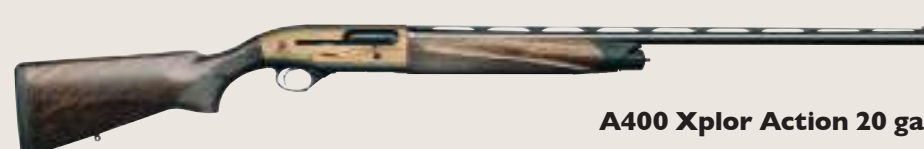
A400 Xtreme Camo Optifade



A400 Xplor Action LH



A400 Xtreme Synthetic



A400 Xplor Action 20 ga.





**A300 Outlander**



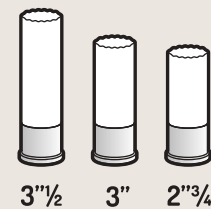
**A300 Outlander Synthetic**



**A350 Xtrema Camo Max5**



A 400  
**Xtreme**  
 UNICO



**STEELIUM**

**WORLD'S BEST BARRELS**

Steelium is the production technology of the Beretta barrels, making the special tri-alloy steel become an outstanding ballistic jewel, thanks to a manufacturing process that is just as unique. Gun drilling, cold hammer forging special vacuum relieving give steel the ideal mechanical characteristic for superior ballistic performance.

OPTIMABORE  
**HP**

**PERFECT BALLISTICS**

With a production begun in 1526, now accounting for more than 500.000 barrels a year, Beretta is a world leader in technological research applied to ballistics. The Optimabore HP technology, combined with Steelium, provides excellent accuracy and pattern quality with both lead and Steel HP shots.

**BLINK**

**36% FASTER AND CLEANER**

Blink is the engine of every A400 shotgun, providing exceptional reloading speed combined with power and cleanness at the top of the category. Being the fastest to fire the next shot means increasing the chance of hitting the target.

**Micro Core**

**SOFTER & LIGHTER THAN RUBBER**

Microcore is an innovative recoil pad developed by Beretta thanks to its experience in decades of competitions around the world. Thanks to the open cell technopolymer - softer, lighter and more slippery than rubber - Microcore expands gradually and instantly, increasing its surface area on the shoulder and giving the shotgun secure and precise support.



**A400 Xtreme Camo Max5 LH**





## A400 Xtreme Unico.

Black Synthetic or Camo, A400 Xtreme Unico provides maximum comfort, power and reliability. Perfect for all kinds of hunting and with a special attitude for waterfowling, the A400 Xtreme Unico shoots all the 12 gauge cartridges with an outstanding 70% shock absorption, from 24 to 64 grams.



### YOUR DIGITAL HUNTING DIARY, INTUITIVE AND EASY TO USE

Stop wondering how many rounds you shot last month or how many miles you walked with your dog: GunPod 2 will hold these statistics for you! The highlights of your hunting sessions, along with photos and videos, finally collected in a handy digital archive. And if you want to share on social networks? With GunPod 2 you can.

### AQUA

#### 100% PROTECTION FROM CORROSION

In models equipped with AQUA technologies, all the internal parts are protected against rust and corrosion, while bolt, carrier and trigger are antireflective-treated. The barrel is internally chromed and externally coated to offer the best protection even in the worst conditions.

### B-LOK

#### FAST LOCKING

B-Lok allows secure and fast forend's cap closing in fractions of a second and with just a 60 degrees rotation. The design of the cap makes the handling easy even with gloves on.

### KICK OFF

#### WORLD'S BEST RECOIL AND MUZZLE RAISE REDUCTION

Kick-Off is the only recoil reduction system in the world using technologies similar to the automotive ones, to provide up to 70% shock absorption. In its PLUS and MEGA versions, the Kick-Off system provides even more benefits, specifically tailored on the needs particular types of hunting.



A400 Xtreme Camo Max5



A400 Xtreme Camo Optifade



A400 Xtreme Synthetic





THERE ARE TWO THINGS  
YOU CAN ALWAYS RELY ON:  
THE SECOND ONE IS YOUR  
HUNTING DOG.





**Beretta A400 Xplor Action.**  
**Shoot everything, every time, better.**

Beautiful, versatile, lightweight and intelligent. Available in 12 gauge - also left handed - and in 20 and 28, the A400 Xplor Action is the world's first semi-automatic shotgun to feature the GunPod shot counter. Simply outstanding.



**SOFTER & LIGHTER  
 THAN RUBBER**

Microcore is an innovative recoil pad developed by Beretta thanks to its experience in decades of competitions around the world. Thanks to the open cell technopolymer - softer, lighter and more slippery than rubber - Microcore expands gradually and instantly, increasing its surface area on the shoulder and giving the shotgun secure and precise support.



**WORLD'S BEST  
 RECOIL ABSORPTION  
 AND MUZZLE  
 RAISE REDUCTION**

Kick-Off is the only recoil reduction system in the world using technologies similar to the automotive ones, to provide up to 70% shock absorption. In its PLUS and MEGA versions, the Kick-Off system provides even more benefits, specifically tailored on the needs particular types of hunting.



**WORLD'S BEST  
 BARRELS**

Steelium is the production technology of the Beretta barrels, making the special tri-alloy steel become an outstanding ballistic jewel, thanks to a manufacturing process that is just as unique. Gun drilling, cold hammer forging special vacuum relieving give steel the ideal mechanical characteristic for superior ballistic performance.

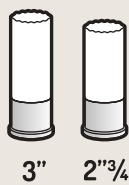


**PERFECT  
 BALLISTICS**

With a production begun in 1526, now accounting for more than 500.000 barrels a year, Beretta is a world leader in technological research applied to ballistics. The Optimabore HP technology, combined with Steelium, provides excellent accuracy and pattern quality with both lead and Steel HP shots.



**A400 Xplor Action 12 ga.**



**YOUR DIGITAL HUNTING  
 DIARY INTUITIVE  
 AND EASY TO USE**

Stop wondering how many rounds you shot last month or how many miles you walked with your dog: GunPod 2 will hold these statistics for you! The highlights of your hunting sessions, along with photos and videos, finally collected in a handy digital archive. And if you want to share on social networks? With GunPod 2 you can.



**36% FASTER  
 AND CLEANER**

Blink is the engine of every A400 shotgun, providing exceptional reloading speed combined with power and cleanliness at the top of the category. Being the fastest to fire the next shot means increasing the chance of hitting the target.



**A400 Xplor Action LH**



**A400 Xplor Action 20 ga.**



# COMPETITION



**9 GENERATIONS OF COMPETITION SHOTGUNS.  
60 YEARS OF VICTORIES IN ANY AND EVERY DISCIPLINE.  
47 OLYMPIC MEDALS.**

At the XXXI Olympic Games in Rio, Team Beretta athletes kept picking up victories, and did something extraordinary by winning 4 Golds out of 5, 4 Silvers out of 5 and 2 Bronzes out of 5.




KIMBERLY RHODE   
SKEET WOMEN BRONZE

MARCO INNOCENTI   
DOUBLE TRAP SILVER


DIANA BACOSI   
SKEET WOMEN GOLD

NATALIE ROONEY   
TRAP WOMEN SILVER


ABDULLAH AL-RASHIDI   
SKEET MEN BRONZE

GIOVANNI PELLIELO   
TRAP MEN SILVER

CATHERINE SKINNER   
TRAP WOMEN GOLD

JOSIP GLASNOVIĆ   
TRAP MEN GOLD

GABRIELE ROSSETTI   
SKEET MEN GOLD

CHIARA CAINERO   
SKEET WOMEN SILVER



# DT 11

## **DTII: THE CHOICE OF THE CHAMPIONS.**

With DTII, balance, power and precision are in your hands, together with outstanding control and perfect trigger pull. The innovative Steelium PRO barrel ensures great pattern and reduced muzzle rise, while the wide receiver improves stability and ease of handling. The B-Fast adjusting devices provide the best ergonomics ever to assist you in hitting every target.



**DTII Sporting**



**DTII Trap**



**DTII Xtrap**



**DTII Skeet**



**DTII ACS**



**DTII L**

Available in Sporting and Trap versions  
Available also in EELL version with long sideplates



# BLACK EDITION

**Carbon fibre trigger plate** DT 11

**Black Edition receiver** DT 11

**Anti-glare barrel finish** 692  
690

**Carbon fibre top rib** DT 11  
692

Extremely lightweight and resistant, this new top rib provides perfect linearity even in the toughest shooting conditions, thanks to the new welding-free fixing technology.

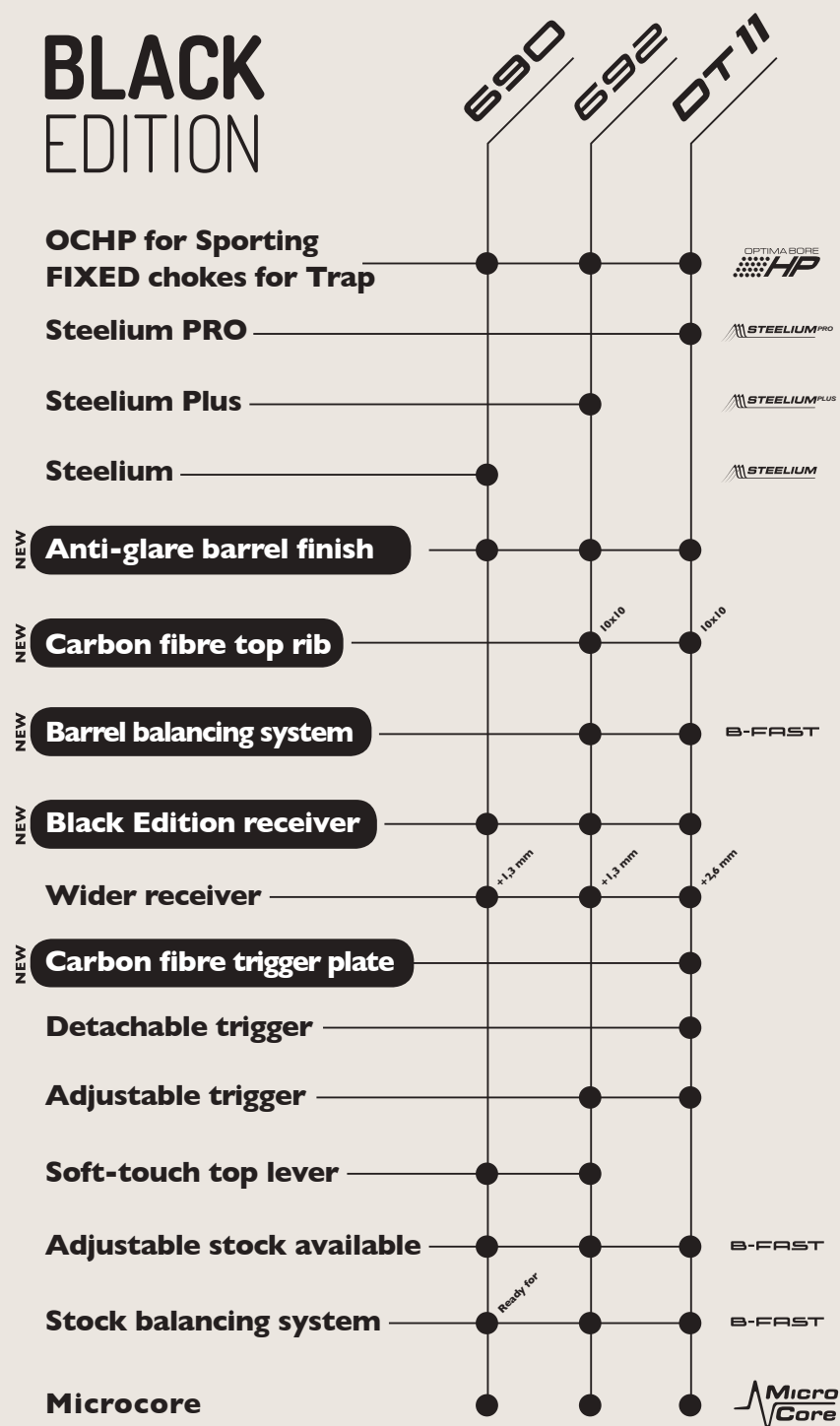
**Barrel balancing system** DT 11  
692

The weight of the barrel is now adjustable through a set of weights that can be fixed to the side ribs, under the forend. The combined use of these weights with the stock balancing system allows an hyper-precise fit of the balance, compensating the natural variability of the wood density and improving the range of customization for the shooter.

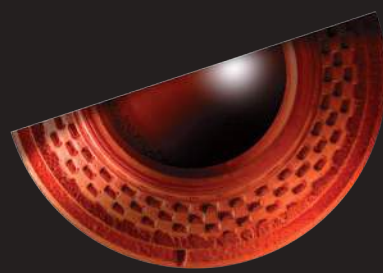
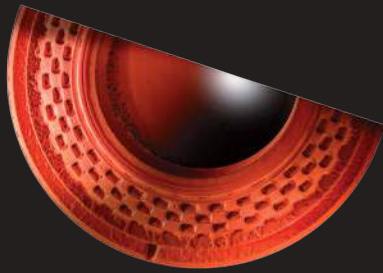
**DT 11 | 692 | 690**

[blackedition.beretta.com](http://blackedition.beretta.com)

## BLACK EDITION







## **DT11**

DT11 Black. The highest expression of the Beretta competition over and under, now in a black and hyper-technological edition. Carbon fibre top rib, carbon fibre trigger plate and the most complete B-Fast ever, now featuring both stock and barrel balancing system. The choice of the champions, now in Black Edition.



**DT11 Black Edition Sporting**

## **692**

692 Black. The brand new carbon fibre top rib and a great black receiver meet the outstanding shooting performance of the Steelium Plus barrel and the perfect fit provided by the B-Fast, now featuring both stock and barrel balancing system. Shooting the 692 has never been so exciting!



**692 Black Edition Sporting**

## **690**

690 Black. The best over & under to make your quantum leap in shooting performance. Thanks to the Steelium barrels and to the outstanding balance, the new 690 Black provides accuracy, ease of handling and perfect control. Exactly what you need to hit your next 25.



**690 Sporting Competition**





# 692

**New 692. The highest level of performance to shoot like a star.**

Perfect pattern distribution and reduced muzzle rise thanks to the new Steelium Plus barrel, smooth and precise handling thanks to the wider receiver and to the new B-Fast balance system. New Beretta 692, to become the new legend.



[692.beretta.com](http://692.beretta.com)



W I D E R  
R E C E I V E R

B - F A S T  
S Y S T E M

Sporting

Trap

XTrap

Skeet

Skeet-US



692 Black Edition Sporting



692 Black Edition Trap



692 Trap B-Fast



692 Sporting



692 Xtrap







# 690



## New 690 Sporting and Trap: the competition over and unders to make your quantum leap in shooting performance.

Thanks to the Steelium barrel and to the outstanding balance, the new 690 competition shotguns provide accuracy, ease of handling and perfect control. Exactly what you need when you start aiming to your first 25

STEELIUM

WIDER RECEIVER

B-FAST SYSTEM

Sporting

Trap

### Microcore pad

Superior softness, lightness and smoothness for the best recoil pad ever made by Beretta.

### Overmoulded and soft-touch opening lever

Engineered for the first time by Beretta on an O/U shotgun, this solution provides the best grip even in the hardest conditions.

### Steelium barrel

The world's best barrel, providing unrivaled safety and superior ballistics.

### Orange stock spacer

A distinctive element making the 690 unique and recognizable.

### Black receiver

Hyper-technical look and matt/polished finishings for this attractive receiver, immediately recognizable by the orange details..

### Optimachoke HP

Interchangeable-chokes barrels, designed for the best performance with both lead and HP steel shots.

### Selected wood

The perfect weight for these walnut wood, specifically selected for competition over and unders.

### Slim forend

Slim and rounded forend, for a better grip and a more streamlined profile.

### Matt barrel

Anti-glare finish to provide the best target acquisition conditions for the shooter.



690 Sporting Competition



690 Sporting III



690 Sporting I



# A400 Xcel

**The purest shooting passion,  
powered by technological precision.**

The most advanced competition semiautomatic shotgun by Beretta, featuring Blink, Kick-Off, Microcore, Steelium, Optimabore HP, Balance Cap and GunPod 2.

STEELIUM

OPTIMABORE  
HP

BLINK

MICRO  
CORE

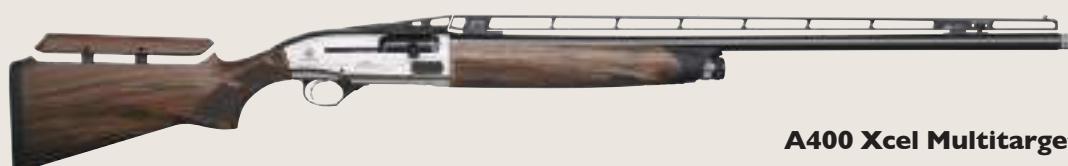
KICK-OFF

G  
GUN  
POD  
2

Sporting

Parallel Target

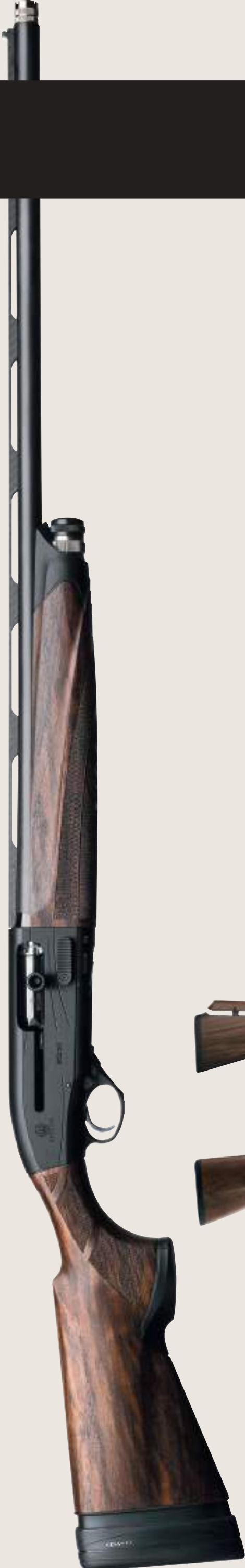
Multitarget



A400 Xcel Multitarget



A400 Xcel Sporting









# APX

**THE STRIKER  
EVERYONE WAS WAITING FOR.  
HANDLE IT AND YOU 'LL UNDERSTAND  
WHY IT'S BEEN WORTH THE WAIT.**

**Easy and quick disassembly** thanks to the latch conveniently positioned on the side of the pistol.

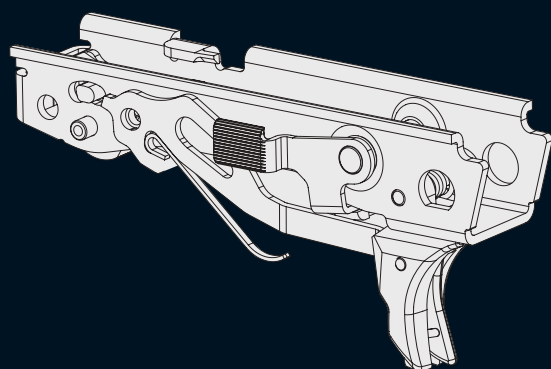


**Newly designed slide.** The sides of the slide offer snag-proof insertion and extraction of the pistol from its holster. The front and rear serrations on the distinctive slide facilitate slide operation and safety control in wet conditions.



**Fully flat trigger guard** provides a support surface and accessory mounting interface under the barrel.

**Trigger Safety** The trigger safety stops the trigger from traveling rearward through inertia in case the pistol is dropped. When the trigger is intentionally pulled, the trigger safety is instantly deactivated.



**Trigger.** Ergonomic, flat-faced design that features straight rearward trigger press. 6 lb. trigger weight with clean break and 3mm tactile reset.



**Interchangeable grip frame housing and serialized chassis frame.** The internal chassis frame of this pistol is serialized. This allows grip frame housings to be exchanged or customized without affecting the serialized part.



# TOP ERGONOMICS - TACTICAL FUNCTIONAL DESIGN - MAXIMUM MODULARITY - SAFE STRIKER DEACTIVATION

## Slide catch.

The slide catch is a lever that holds the slide open after the last round is fired. This allows the user to immediately determine that the pistol does not have a round in the chamber or in the magazine. The slide catch of the APX is internal, ambidextrous and completely snag free.



## Automatic striker block safety

Beretta APX pistols have a striker blocking device that prevents forward movement of the striker unless the trigger is completely pulled.



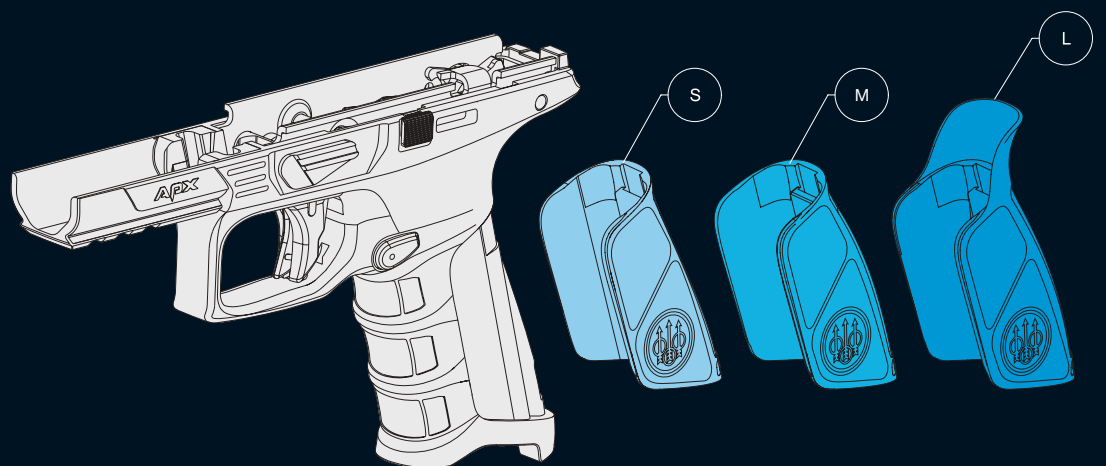
## Striker Deactivation Button

Beretta APX pistols have a unique feature that allows the user to deactivate the internal striker mechanism prior to disassembly. This means the pistol can be field stripped without pulling the trigger.



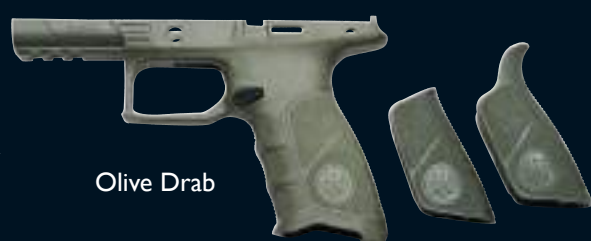
## Large magazine release button

for immediate magazine change. Reversible.



## Ergonomic and modular backstrap.

Thanks to the new modular system, the pistol adapts to different hand sizes with interchangeable back-straps of different thickness and configurations for individualized performance.



Olive Drab



Wolf Grey



Flat Dark Earth



# 90/80 SERIES

**THE 92FS HAS SET THE STANDARD IN SEMI-AUTOMATIC PISTOLS FOR THE LAST 30 YEARS WITH OVER 4 MILLION PIECES MANUFACTURED.**



### 92 FS

A legend in the world of semiautomatic pistols and probably the most reliable and field-tested pistol of the history, 92 FS satisfied all the most demanding military requests and millions of customers around the globe.



### 92 FS CENTENNIAL

To celebrate the 100th anniversary of the first Beretta semiautomatic pistol, the Mod. 1915, Beretta created this exclusive Limited Edition with steel frame, micro-metric sights, polished barrel, exclusive finishing, wood grips with medal, safety on the frame and dedicated packaging.



### 92 FS INOX

The Beretta 92FS Inox gives you all the features of the legendary 92FS in a rugged and attractive satin stainless steel finish.



### 92FS 22LR

Training version of the 92FS, replicating its ergonomics and fit&feel. Suitable also for plinking.



### 92 AI

The 92 AI pistols by Beretta are derived from the legendary 92 FS.



### 87 TARGET

You'll find the trigger pull on the 87 Target to be very light and crisp. The pistol is designed to remain upright when set down on a flat surface, ready to be quickly gripped, magazine loaded and raised to the target (.22LR Practical Shooting).





# Px4



## **PX4 STORM FULL SIZE**

PX4 is designed to emphasize power, ease of handling and ballistic performance.



## **PX4 STORM INOX**

The PX4 version featuring stainless steel slide.



## **PX4 STORM COMPACT**

The PX4 compact provides all the best of PX4 in a reduced and more compact design.



## **PX4 STORM COMPACT INOX**

The PX4 compact provides all the best of PX4 in a reduced and more compact design.



## **PX4 STORM SPECIAL DUTY**

Developed to meet the most demanding requests, PX4 Special Duty provides superior protection from external agents, extended barrel and a special case including exclusive accessories.



## **PX4 STORM DELUXE**

The most sophisticated edition of the PX4 family.



## Field over and under.

Model	Gauge	Chamber (inch)	Barrel (inch)	Chokes (type)	Rib (mm)	Drop (mm/mm)	Cast	Pad	Accessories
686 Silver Pigeon I	12 and 20	3"	26"-28"-30"	MC	6x6	36,5/57,5	RH-LH	MicroCore	5 Chokes
686 Silver Pigeon I	28	2¾"	26"-28"-30"	MC	6x6	36,5/57,5	RH-LH	MicroCore	5 Chokes
686 Silver Pigeon I	.410	3"	26"-28"-30"	MC	6x6	36,5/57,5	RH-LH	MicroCore	5 Chokes
690 Field I	12 and 20	3"	26"-28"-30"	OCHP	6x6	35/55-38/60	RH-LH	MicroCore	5 Chokes
690 Field III	12 and 20	3"	26"-28"-30"	OCHP	6x6	35/55-38/60	RH-LH	MicroCore	5 Chokes
690 Field III	12	3"	26"-28"-30"	****/***	6x6	35/55-38/60	RH-LH	MicroCore	
687 EELL Diamond Pigeon	12 and 20	3"	26"-28"-30"	MC, ****/****	6x6	35/55-38/60	RH-LH	Wood (thin)	RPM, M, 5 Chokes
687 EELL Diamond Pigeon	28	2¾"	26"-28"-30"	MC	6x6	35/55-38/60	RH	Wood (thin)	RPM, M, 5 Chokes
687 EELL Diamond Pigeon	.410	3"	26"-28"	MC	6x6	35/55-38/60	RH	Wood (thin)	RPM, M, 5 Chokes
687 EELL Classic	12 and 20	3"	26"-28"-30"	MC, ****/****	6x6	35/55-38/60	RH	Wood (thin)	RPM, MS, 5 Chokes
687 EELL Classic	28 and .410	3"	28"-30" (cal.28)	MC	6x6	35/55-38/60	RH	Wood (thin)	RPM, MS, 5 Chokes
Giubileo	12-20-28-.410	3"	26"-28"-30"	MC	10x8-8x6-6x6	35/55-38/60	RH	Wood (thin)	M, 5 Chokes
SO Sparviere	12	2¾", 3"	28"-30"	MC-****/****/****	10x8	MTM or H	-	FW-RT	Premium accessories kit
SO10	12-20-28-.410	3"	26"-28"-30"	OC-Fixed	6x6	MTM or H	-	FW-RT	Premium accessories kit, 5 Chokes
SO10 EELL	12-20-28-.410	3"	26"-28"-30"	OC-Fixed	6x6	MTM or H	-	FW-RT	Premium accessories kit, 5 Chokes
SO6 EELL	12	2¾", 3"	26"-28"-30"	MC	10x8	MTM or H	Pistol / English RH	FW-RT	Premium accessories kit, 5 Chokes
SO6 EELL	12	2¾", 3"	26"-28"-30"	****/****/****/****	10x8	MTM or H	Pistol / English RH	FW-RT	Premium accessories kit

## Field side by side.

Model	Gauge	Chamber (inch)	Barrel (inch)	Chokes (type)	Rib (mm)	Drop (mm/mm)	Cast	Pad	Accessories
486 Parallelo	12	3"	26"-28"-30"	OCHP	10x5,5	37/59	Pistol RH	Wood	M, 5 Chokes
486 Parallelo	12	3"	28"	****/****/****	10x5,5	37/59	English RH	Wood	M, 5 Chokes
486 Parallelo	12	3"	30"	****/****	10x5,5	37/59	English RH	Wood	M, 5 Chokes
486 Parallelo	20	3"	26"-28"-30"	OCHP	8x5	37/59	Pistol / English RH	Wood	M, 5 Chokes
486 Parallelo	28	3"	28"	OCHP	8x5	37/59	English RH	Wood	M, 5 Chokes
486 Parallelo EL	20	3"	26"-28"-30"	OCHP	8x5	37/59	English RH	Wood	M, 5 Chokes
486 Parallelo EL Color-case	20	3"	26"-28"-30"	OCHP	8x5	37/59	English RH	Wood	M, 5 Chokes
486 by Marc Newson	12	3"	26"-28"	OCHP	10x5,5	37/59	English RH	Wood	M, 5 Chokes
486 by Marc Newson	12	3"	28"	****/****/****	10x5,5	37/59	English RH	Wood	-
486 by Marc Newson	12	3"	30"	****/****	10x5,5	37/59	English RH	Wood	-
486 by Marc Newson	20	3"	26"-28"-30"	OCHP	8x5	37/59	English RH	Wood	M, 5 Chokes
486 by Marc Newson	28	2¾"	28"	OCHP	8x5	37/59	English RH	Wood	-
Imperiale Montecarlo	12	2¾", 3"	26"-28"-30"	Fixed	10x6	SM	-	FL-GR	Premium accessories kit
Imperiale Montecarlo	20	2¾", 3"	26"-28"-30"	Fixed	9,5x5,5	SM	-	FL-GR	Premium accessories kit
Imperiale Montecarlo	28	2¾"	26"-28"-30"	Fixed	8,7X6	SM	-	FL-GR	Premium accessories kit
Imperiale Montecarlo	.410	2¾", 3"	26"-28"-30"	Fixed	8,7X7	SM	-	FL-GR	Premium accessories kit

## Field Semi Auto.

Model	Gauge	Chamber (inch)	Barrel (inch)	Chokes (type)	Rib (mm)	Pad	Accessories
A300 Outlander	12	3"	24"-26"-28"-30"	MC	6x6	MicroCore	1 choke mounted (***)
A300 Outlander Synthetic	12	3"	24"-26"-28"-30"	MC	6x6	MicroCore	1 choke mounted (***)
A350 Xtrema Camo MAX-5® KO	12	3½"	28"-30"	OCHP	6x6	MicroCore	3 Chokes (**/****/****)
A400 Xplor Action	12	3"	26"-28"-30"	OCHP	6x6	MicroCore	XG, SPP, MAR, 3 Chokes (**/****/****)
A400 Xplor Action	20	3"	24"-26"-28"-30"	OCHP	6x6	MicroCore	XG, SPP, MAR, 3 Chokes (**/****/****)
A400 Xplor Action	12	3"	26"-28"-30"	OCHP	6x6	MicroCore	GP, XG, SPP, MAR, 3 Chokes (**/****/****)
A400 Xplor Action KO	12	3"	26"-28"-30"	OCHP	6x6	MicroCore	XG, SPP, MAR, 3 Chokes (**/****/****)
A400 Xplor Action KO	12	3"	26"-28"-30"	OCHP	6x6	MicroCore	GP, XG, SPP, MAR, 3 Chokes (**/****/****)
A400 Xplor Action Left-Handed	12	3"	26"-28"-30"	OCHP	6x6	MicroCore	XG, SPP, MAR, 3 Chokes (**/****/****)
A400 Xplor Action Left-Handed	12	3"	26"-28"-30"	OCHP	6x6	MicroCore	GP, XG, SPP, MAR, 3 Chokes (**/****/****)
A400 Xplor Action Left-Handed KO	12	3"	26"-28"-30"	OCHP	6x6	MicroCore	XG, SPP, MAR, 3 Chokes (**/****/****)
A400 Xplor Action Left-Handed KO	12	3"	26"-28"-30"	OCHP	6x6	MicroCore	GP, XG, SPP, MAR, 3 Chokes (**/****/****)
A400 Xplor Unico	12	3½"	26"-28"-30"	OCHP	6x6	MicroCore	XG, SPP, MAR, 3 Chokes (**/****/****)
A400 Xplor Unico KO	12	3½"	26"-28"-30"	OCHP	6x6	MicroCore	XG, SPP, MAR, 3 Chokes (**/****/****)
A400 Xtreme Unico Synthetic KO Mega	12	3½"	26"-28"-30"	OCHP	6x6	MicroCore	SPP, MAR, 3 Chokes (**/****/****)
A400 Xtreme Unico Synthetic KO Mega	12	3½"	26"-28"-30"	OCHP	6x6	MicroCore	SPP, MAR, 3 Chokes (**/****/****)
A400 Xtreme Unico Camo MAX-5® KO Mega	12	3½"	26"-28"-30"	OCHP	6x6	MicroCore	SPP, MAR, 3 Chokes (**/****/****)
A400 Xtreme Unico Camo MAX-5® KO Mega	12	3½"	26"-28"-30"	OCHP	6x6	MicroCore	SPP, MAR, 3 Chokes (**/****/****)

## Competition Semi Auto.

Model	Gauge	Chamber (inch)	Barrel (inch)	Chokes (type)	Rib (mm)	Pad	Accessories
A400 Xcel Multitarget (B-Fast)	12	3"	28"-30"-32"	OCHP	Adjustable	Microcore	3 Chokes
A400 Xcel Multitarget Kick-Off (B-Fast)	12	3"	28"-30"-32"	OCHP	Adjustable	Microcore	3 Chokes
A400 Xcel Parallel Target	12	3"	28"-30"-32"	OCHP	10x8 con Salto	MicroCore	XG, SPP, BC, 3 Chokes (**/****/****)
A400 Xcel Sporting Black	12	3"	28"-30"-32"	OCHP	10x10 Carbon fiber	MicroCore	XG, SPP, BC, 3 Chokes Black Edition (**/****/****)
A400 Xcel Sporting Black Kick-Off	12	3"	28"-30"-32"	OCHP	10x10 Carbon fiber	MicroCore	XG, SPP, BC, 3 Chokes Black Edition (**/****/****)
A400 Xcel Sporting	12	3"	28"-30"-32"	OCHP	10x8	MicroCore	XG, SPP, BC, 3 Chokes (**/****/****)
A400 Xcel Sporting	12	3"	28"-30"-32"	OCHP	10x8	MicroCore	XG, SPP, BC, 3 Chokes (**/****/****)
A400 Xcel Sporting	20	3"	28"-30"-32"	OCHP	10x8	MicroCore	XG, SPP, BC, 3 Chokes (**/****/****)
A400 Xcel Sporting Kick-Off (con GunPod 2)	12	3"	28"-30"-32"	OCHP	10x8	MicroCore	XG, SPP, BC, 3 Chokes (**/****/****)

**NOT ALL THE CONFIGURATION COMBINATIONS MAY BE AVAILABLE IN EVERY COUNTRY. PLEASE CHECK AVAILABILITY WITH THE LOCAL DISTRIBUTOR OR WITH THE BERETTA CUSTOMER SERVICE.**

**NOTES:** ■ = On request. OCHP = Optimachoke HP, OC = Optimachoke, MC = Mobilchoke, S = Single trigger, SS = Single selective trigger, D = Double trigger, MTM = Made to measure, H = Headed, KO = Kick-Off, KO+ = Kick-Off Plus, KOm = Kick-Off Mega, PPL = Polypropylene, MS = Swivels (mounted), S = Swivels (not mounted), PPA = Plastic pad, RPM = Rubber pad (medium), SCS = Auto-cleaning piston, SPP = Adj. drop plates (kit), AR = Recoil reducer, MAR = Quick-attach swivels, XG = XtraGrain, Lylium = Steel HP test, ABS special = Covered with textile and refined internally, FW-TR = Finished wood or rubber (thin), FW-RR = Finished wood or red rubber. All the A400 semiautomatic shotguns feature Optimachoke HP barrels with OCHP chokes. Pairs are available on request (price +20% versus the price of the two single shotguns) with 687 EELL Diamond Pigeon, 687 Classic, Giubileo, SO6 EELL and SO10. \* on request. \*\* Price and timing to be defined for each single order based on finishing, wood grade and engraving. The SO6 EELL and SO10 EELL over and unders are made only with special orders. On request, these products can be customized up to the maximum level (feasibility to be checked with our master engravers and gunsmiths).

The illustrations and descriptions given in this brochure are intended as a general guide only, and must not be taken as binding. The Company, therefore, reserves the right to make changes, at any moment and without prior notice, necessary to improve the product and to meet either manufacturing or sales requirements. Copyright Fabbrica d'Armi Pietro Beretta S.p.A. on images, texts and graphics (if not otherwise stated). All rights are reserved.



## Competition over and under.

Model	Gauge	Chamber (inch)	Barrel (inch)	Chokes (type)	Rib (mm)	Drop (mm/mm)	Cast	Forend	Accessories
<b>Sporting</b>									
686 Silver Pigeon I Sporting	12	3"	28"-30"-32"	OCHP	10x8	36,5/57,5	RH-LH	Schnabel	5 Chokes
686 Silver Pigeon I Sporting (B-Fast)	20	3"	30"	MC	8x8	38/60	RH-LH	Schnabel	5 Chokes
686 Silver Pigeon I Sporting (B-Fast)	28	2¾"	30"	MC	8x8	38/60	RH-LH	Half Beavertail	5 Chokes
686 Silver Pigeon I Sporting (B-Fast)	.410	3"	30"	MC	8x8	38/60	RH-LH	Half Beavertail	5 Chokes
687 EELL Diamond Pigeon Sporting	12	3"	30"-32"	MC	10x8	35/55-38/60	RH-LH	Schnabel	RPM, 5, 5 Chokes
690 Sporting BLACK	12	3"	28"-30"-32"	EOCHP	10x8	35/55-38/60	RH-LH	Schnabel-Rounded	RPM, 5 Chokes
690 Sporting BLACK (B-Fast)	12	3"	28"-30"-32"	EOCHP	10x8	-	RH-LH	Schnabel-Rounded	RPM, 5 Chokes
690 Sporting III	12	3"	28"-30"-32"	OCHP	10x8	35/55	RH-LH	Schnabel	5 Chokes
692 Sporting	12	3"	28"-30"-32"	EOCHP	10x8	35/55-38/60	RH-LH	Schnabel-Rounded	RPM, 5 Chokes
692 Sporting (B-Fast)	12	3"	28"-30"-32"	EOCHP	10x8	-	RH-LH	Schnabel-Rounded	RPM, 5 Chokes
692 Sporting BLACK	12	3"	28"-30"-32"	EOCHP	10x10 Carbon fiber	35/55-38/60	RH-LH	Schnabel-Rounded	RPM, 5 Chokes
692 Sporting BLACK (B-Fast)	12	3"	28"-30"-32"	EOCHP	10x10 Carbon fiber	-	RH-LH	Schnabel-Rounded	RPM, 5 Chokes
DT1 I Sporting	12	3"	28"-30"-32"	EOCHP	10x8	35/56-38/60	RH-LH	Schnabel-Rounded	5 Chokes
DT1 I Sporting (B-Fast)	12	3"	28"-30"-32"	EOCHP	10x8	-	RH-LH	Schnabel-Rounded	5 Chokes
DT1 I Sporting BLACK	12	3"	30"-32"	EOCHP	10x10 Carbon fiber	35/56-38/60	RH-LH	Schnabel-Rounded	5 Chokes
DT1 I Sporting BLACK (B-Fast)	12	3"	30"-32"	EOCHP	10x10 Carbon fiber	-	RH-LH	Schnabel-Rounded	5 Chokes
DT1 I ACS (B-Fast)	12	3"	30"-32"	OCHP	10x8 Adjustable	Montecarlo Reg.	RH-LH	Schnabel-Rounded	5 Chokes
DT1 I L Sporting Floral	12	3"	28"-30"-32"	OCHP	10x8	35/56-38/60	RH-LH	Schnabel-Rounded	5 Chokes
DT1 I L Sporting Floral (B-Fast)	12	3"	28"-30"-32"	OCHP	10x8	-	RH-LH	Schnabel-Rounded	5 Chokes
DT1 I L Sporting Game Scene	12	3"	28"-30"-32"	OCHP	10x8	35/56-38/60	RH-LH	Schnabel-Rounded	5 Chokes
DT1 I L Sporting Game Scene (B-Fast)	12	3"	28"-30"-32"	OCHP	10x8	-	RH-LH	Schnabel-Rounded	5 Chokes
DT1 I EELL Sporting	12	3"	28"-30"-32"	OCHP	10x8	35/56-38/60	RH-LH	Rounded	5 Chokes
DT1 I EELL Sporting (B-Fast)	12	3"	28"-30"-32"	OCHP	10x8	-	RH-LH	Rounded	5 Chokes
SO5 Sporting (Steelium Pro barrel)	12	3"	28"-30"-32"	OCHP	10x8	MTM or H	-	Beavertail-Schnabel	5 Chokes
<b>Trap</b>									
690 Trap BLACK	12	2¾"	30"-32"	**/*	10x10	32/42-35/45	RH-LH	Beavertail-Rounded	RPM
690 Trap BLACK (B-Fast)	12	2¾"	30"-32"	**/*	10x10	-	RH-LH	Beavertail-Rounded	RPM
692 Trap	12	2¾"	30"-32"	**/*	10x10	29/39-32/42-35/45	RH-LH	Beavertail-Rounded	RPM
692 Trap (B-Fast)	12	2¾"	30"-32"	**/*	10x10	-	RH-LH	Beavertail-Rounded	RPM
692 Trap BLACK	12	2¾"	30"-32"	**/*	10x10 Carbon fiber	29/39-32/42-35/45	RH-LH	Beavertail-Rounded	RPM
692 Trap BLACK (B-Fast)	12	2¾"	30"-32"	**/*	10x10 Carbon fiber	-	RH-LH	Beavertail-Rounded	RPM
692 Xtrap (B-Fast)	12	3"	30"-32"	OCHP	Adjustable	Montecarlo Reg.	RH-LH	Beavertail-Rounded	5 Chokes
DT1 I Trap	12	2¾"	30"	**/*	10x10	29/39-32/42-34/44	RH-LH	Beavertail-Rounded	-
DT1 I Trap (B-Fast)	12	2¾"	30"	**/*	10x10	-	RH-LH	Beavertail-Rounded	-
DT1 I Trap BLACK	12	2¾"	30"	**/*	10x10 Carbon fiber	32/42	RH-LH	Rounded	-
DT1 I Trap BLACK (B-Fast)	12	2¾"	30"	**/*	10x10 Carbon fiber	-	RH-LH	Rounded	-
DT1 I XTrap (B-Fast)	12	3"	30"-32"	EOCHP	Adjustable	-	RH-LH	Beavertail-Rounded	5 Chokes
DT1 I L Trap Floral	12	3"	30"	**/*	10x10	29/39-32/42-34/44	RH-LH	Beavertail-Rounded	-
DT1 I L Trap Floral (B-Fast)	12	3"	30"	**/*	10x10	-	RH-LH	Beavertail-Rounded	-
DT1 I EELL Trap	12	2¾"	30"	**/*	10x10	29/39-32/42	RH-LH	Rounded	-
DT1 I EELL Trap (B-Fast)	12	2¾"	30"	**/*	10x10	-	RH-LH	Rounded	-
SO5 Trap (Barrel Steelium Pro)	12	2¾"	30"-32"	**/*	10x10	MTM or H	-	Beavertail	-
<b>Skeet</b>									
692 Skeet	12	2¾"	28¾"	OCHP	10x8	35/55-38/60	RH-LH	Rounded	RPM
692 Skeet (B-Fast)	12	2¾"	28¾"	OCHP	10x8	38/60	RH-LH	Rounded	RPM
DT1 I Skeet	12	2¾"	28"-28¾"	OCHP	10x8	35/56-38/60	RH-LH	Schnabel-Rounded	5 Chokes
DT1 I Skeet (B-Fast)	12	2¾"	28"-28¾"	OCHP	10x8	-	RH-LH	Schnabel-Rounded	5 Chokes
DT1 I Skeet BLACK	12	2¾"	30"	OCHP	10x10 Carbon fiber	-	RH-LH	Rounded	5 Chokes
DT1 I Skeet BLACK (B-Fast)	12	2¾"	30"	OCHP	10x10 Carbon fiber	-	RH-LH	Rounded	5 Chokes
SO5 Skeet (Barrel Steelium Pro)	12	2¾"	28"-28¾"	OCHP	10x8	MTM or H	-	Beavertail	5 Chokes

## Pistols.

Model	Gauge	Action	Additional Magazines	"Magazine Capacity (rounds)"	"Weight Unloaded (g)"	Total Length (mm)	Barrel Length (mm)	Width (mm)	Height (mm)	Safety Position	Grips
APX	9x19	SDA	1	15	800	192	108	33	142	Trigger	Plastic
APX	.40 S&W	SDA	1	15	820	192	108	33	142	Trigger	Plastic
M9A3	9x19	S - D	1	15	944	220	127	38	137	Slide	Plastic
92 FS	9x19	S - D	1	15	945	217	125	38	143	Slide	Plastic
92 FS Inox	9x19	S - D	1	15	945	217	125	38	143	Slide	Rubber
92 FS Centennial	9x19	S	1	15	1.350	217	125	38	143	Frame	Wood
92 A1	9x19	S - D	1	15	945	217	125	38	143	Slide	Plastic
PX4 Storm Compact Inox	9x19	S - D	1	15	770	173	83	36	129	Slide	Int. Backstrap
PX4 Storm Compact Type F	9x19	S - D	1	15	770	173	83	36	129	Slide	Int. Backstrap
PX4 Storm Deluxe	9x19	S - D	1	15	785	192	102	36	140	Slide	Int. Backstrap
PX4 Storm Inox	9x19	S - D	1	15	785	195	102	36	140	Slide	Int. Backstrap
PX4 Storm SubCompact Type F	9x19	S - D	1	13	740	158	76	36	122	Slide	Int. Backstrap
PX4 Storm Type F	9x19	S - D	1	15	785	192	102	36	140	Slide	Int. Backstrap
PX4 Storm Type G	9x19	S - D	1	15	785	192	102	36	140	LAC	Int. Backstrap
PX4 Storm Compact Type F	.40 S&W	S - D	1	12	770	173	83	36	129	Slide	Int. Backstrap
PX4 Storm Inox	.40 S&W	S - D	1	14	785	192	102	36	140	Slide	Int. Backstrap
PX4 Storm Type F	.40 S&W	S - D	1	14	810	192	102	36	140	Slide	Int. Backstrap
PX4 Storm Type G	.40 S&W	S - D	1	14	810	192	102	36	140	LAC	Int. Backstrap
PX4 Storm Special Duty *	45 ACP	S - D	2	9-10	820	210	115	36	145	Slide	Int. Backstrap
PX4 Storm Type F	45 ACP	S - D	1	9-10	800	195	102	36	140	Slide	Int. Backstrap
BU9 Nano	9x19	SDA	1	6	562	143	78	23	106	Trigger	
Pico	9 Short	D	1	6	325	130	70	18	100		Plastic
96 A1	.40 S&W	S - D	1	12	940	217	125	38	143	Slide	Plastic
87 Target 22LR	22 LR	S	1	10	835	225	150	28	135	Frame	Plastic
92 FS 22LR	22 LR	S - D	1	15	740	217	135	38.6	140	Slide	Plastic
U22 Neos Inox	22 LR	S	1	10	1.000	261	152	38	132	Frame	
22LR Practice Kit	22 LR			10			130			Slide	

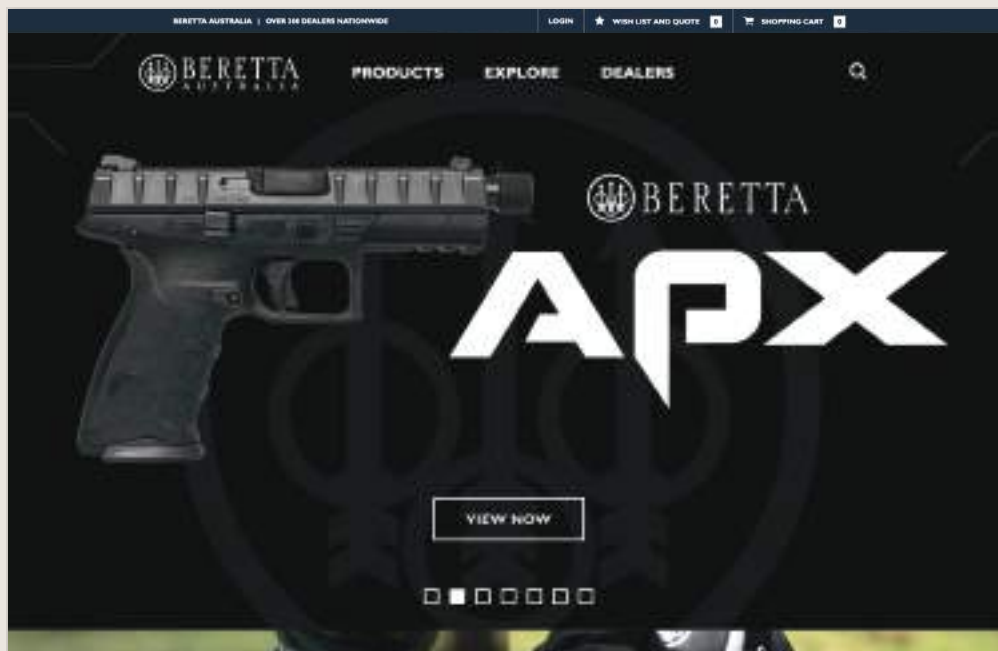
o **RESTRICTED - Only for security and LE market.**



# BERETTA ONLINE

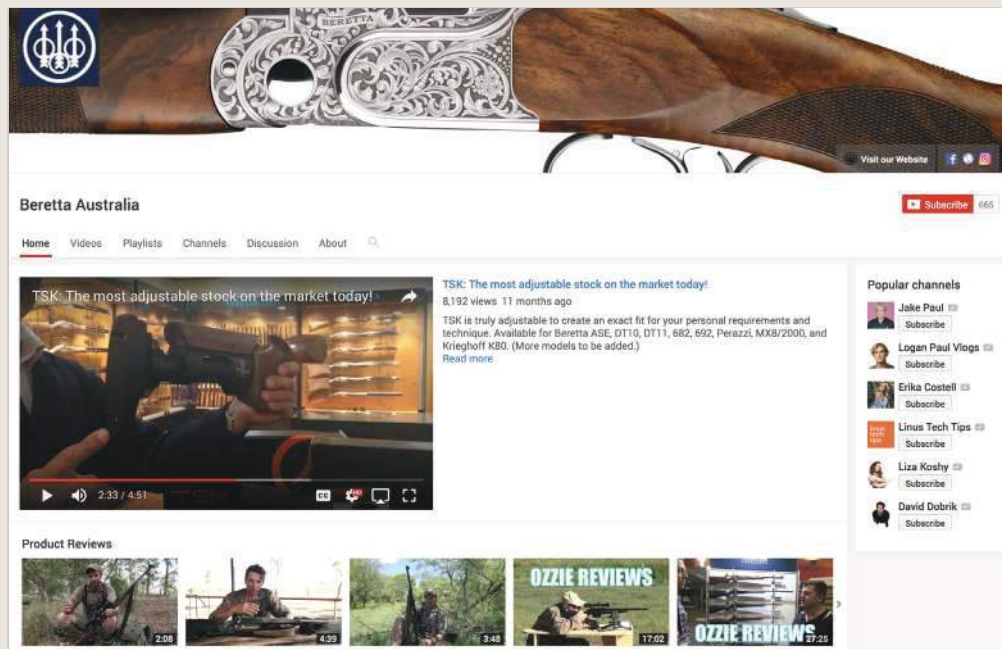
berettaaustralia.com

The digital gateway to the Beretta World. Here you can get information about all the products and get access to our estore.



YouTube

The official YouTube channel of Beretta Australia. Here you can learn more about your favourite brand and get exciting previews of the newest products.



**TAG YOUR PASSION: #berettapride #berettaisbetter #berettastyle**



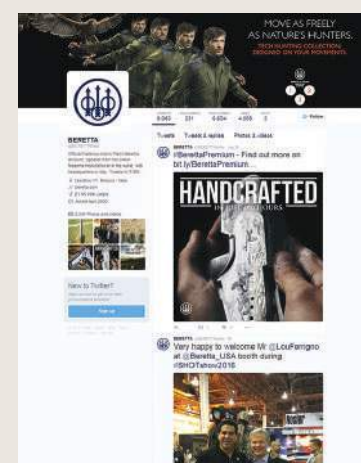
Enter the Beretta "behind the scenes" and show your love for the 3-arrows brand. Share the most beautiful pictures of your outdoor experiences.



Join our community, discover the world of Beretta and stay in touch with us and with other like-minded people.



All the latest news, promos, new releases and customer service, all in one place.



**Beretta Australia**  
 PO Box 4528, Dandenong South, VIC 3164  
**Email**  
 info@berettaaustralia.com



BERETTAAUSTRALIA.COM





# BERETTA







**DEDICATED TO ALL THOSE WHO  
LOVE THE OUTDOORS LIKE US.**

[www.berettaaustralia.com.au](http://www.berettaaustralia.com.au)



**BERETTA**  
AUSTRALIA