

A M A T V I C T O R I A C U R A M



ARMSIGHT

2014 PRODUCT GUIDE

**NIGHT VISION
THERMAL IMAGING
LASER EMITTING SYSTEMS
ADVANCED OPTICS**

Content

Ⓐ ABOUT THE COMPANY	3
Ⓐ NIGHT VISION TECHNOLOGIES	4
Ⓐ NIGHT VISION	9
Prime	10
Spark	11
Avenger	12
Sirius	13
Nyx-14 / N-14	14
Nyx-14 PRO	16
PVS-14 / 6015	18
Vega / Ninox	19
Spark-G / Spark-X	20
Nyx-7	21
PVS-7	22
Nyx-7 PRO	24
N-15	25
Dark Strider	26
Spark-B	27
Discovery	28
Eagle	30
Orion / WWZ	31
Vampire	32
Spear	33
Vulcan	34
Nemesis	36
CO-Mini	37
CO-MR	38
CO-LR	39
Ⓐ DIGITAL NIGHT VISION	40
Prime D / Prime DC	41
Bit / Janus	42
Drone PRO	43
Cipher	44
Ⓐ THERMAL IMAGING	45
Prometheus	46
Helios	47
Zeus	48
Apollo	50
Ⓐ DIRECT VIEW	52
AIM PRO / AIM PRO-L	53
MCS	54
Daytime Binoculars	55
Ⓐ ILLUMINATORS AND LASER SYSTEMS	56
Drakos	57
IR810 / IR850 / IR810W / IR850W / IR940W	58
Ⓐ EXPORT RESTRICTIONS	59

ABOUT THE COMPANY

Armasight

Armasight is a leading U.S.-based manufacturer of cutting-edge Night Vision and advanced Thermal Imaging Solutions, top-quality Direct View Binoculars, Illumination Tools and other precision optics characterized by outstanding performance and a wealth of innovative features.

We use state-of-the-art materials, manufacturing facilities and modern design. Armasight focuses on the continuous improvement, evaluation and implementation of the latest electro-optical technological advancements.

Armasight is built on a dedicated commitment to our client's absolute satisfaction — we are determined to provide the absolute best customer service in the industry. Armasight is focused on encouraging our team members to thrive in a creative and supportive environment. Armasight's duty is to provide customers with the best products at competitive prices while offering its employees and shareholders fair compensation and profits. We accomplish these goals by applying industry best business practices in full compliance with all applicable laws of the United States as well as those of the final international destinations of our products.

Our Mission

Our mission is to develop the highest quality selection of top-performing, exceptionally reliable optical products that appeals to a wide range of customers and allows professional users to successfully accomplish missions, all while offering unmatched customer service and timely delivery at affordable price-to-performance ratios that are fair to our customers and represent the interests of valued company stakeholders.

Experience

Armasight is a new, dynamic small business enterprise pursuing the goal of creating a meaningful presence in the night vision and electro-optical arena by supporting elite military units, law enforcement professionals, first responder agencies and commercial consumers worldwide. Our core staff has held a series of reputable positions with various companies in the night vision industry, including American Technologies Network, Insight Technology, Litton Electro-Optical Systems, and Nivisys Industries. Together, our seasoned team of professionals boasts over 140 years of experience in all aspects of the night vision and optics industry.

Contact Information

Armasight Inc.

815 Dubuque Avenue
South San Francisco
CA 94080, USA

Phone: (888) 959-2259
Fax: (888) 959-2260
Intl Phone/Fax: (650) 492-7755
info@armasight.com

International Sales & Export

Baseline Business Park
5032 S. Ash Avenue, Suite 108
Tempe, AZ 85282
USA

Phone: (480) 907-6950
(480) 907-6795
(480) 907-6796
Fax: (480) 393-4882
export@armasight.com



NIGHT VISION TECHNOLOGIES

Night Vision (I²)

Most Starlight Image Intensified (I²) Night Vision products are light amplifying devices. Light amplification technology allows small amounts of light energy, such as from moonlight or starlight, to be converted into electrical energy (electrons). These electrons multiply exponentially through electrical and chemical processes. They then bounce off of a phosphor screen, which converts the electrons back into photons, in order to display an impressive nighttime image even in total darkness.

In addition to traditional Green Color Phosphor image intensifier tube (IIT), we've recently introduced White Color Phosphor displays, which allow users to view black and white images instead of traditional green and black.

In the night vision world, "generation" monikers reflect the level of technology used for a particular device. The higher the generation, the better performance you will get out of your night vision device – for example, Gen 2 devices are more advanced than Gen 1+. In 2013, a new level was introduced: "CORE" technology, which takes a strong position between traditional Gen 1 and Gen 2 devices.

Armasight offers equipment in all existing levels of starlight technology and in all possible configurations, including monoculars, binoculars, riflescopes, and clip-on systems

Gen 1+ IIT

First generation devices work by amplifying existing light by several thousand times. Using an alternating photocathode/anode conversion between light and electrons, the cascading approach utilizes progressively increased voltages to increase electron speed and, consequently, allows you to see clearly in the dark. These units provide bright, fully visible images at a low cost, which makes them a popular choice for boating, wildlife observation, and home security. Available for international sales.

CORE IIT

Thanks to the latest advancements in electro optical manufacturing Armasight redefines affordable high performance night vision with CORE™ (Ceramic Optical Ruggedized Engine) Image Intensifier technology.

Unlike Gen 1 Image intensifier tubes that are fragile by a virtue of being made from glass, CORE™ IITs are made just like Gen 2 and Gen 3 by fusing metal alloys with ceramic compounds. CORE™ technology is based on durable elements and allows tight component stacking, resulting in image tubes that are exceptionally shockproof and vibration resistant. Robust packaging envelop lacks easy-to-break protrusions common in Gen 1 tubes and allows for streamline design of lighter, compact and more reliable night vision devices.

CORE™ platform offers best in class resolution with 60-70 lp/mm, increased photocathode sensitivity level in upwards of 400µA/Im providing image quality in prevalent ambient light condition rivaling high-end Gen 2 image tubes.

Gen 2+ SD/SDi "Standard Definition" IIT

Second Generation tubes have a microchannel plate (MCP) electron amplifier, as well as a multi-alkaline photocathode with a built-in power supply. Typically, resolution ranges from 45 to 51 lp/mm and the Signal-to-Noise Ratio ranges from 15 to 22.

*The Armasight SDi tubes are designed to support international sales of Gen2+ equipment to various countries.

Gen 2+ ID/Idi "Improved Definition" IIT

Our Gen 2+ ID image intensifier tubes are engineered for significantly enhanced performance over current 2nd Generation IITs. The Gen 2+ ID IIT is a compact, Multi-Alkali, 18mm format, proximity-focused MCP-based image intensifier. Resolution ranges from 47 to 54 lp/mm and the Signal-to-Noise Ratio typically ranges from 15 to 21.

*The Armasight IDi tubes are designed to support international sales of Gen 2+ equipment to various countries.



Gen 2+ HD/HDi “High Definition” IIT

Our Gen 2+ HD tubes are an upgraded version of the Gen 2+ ID tube. Most HD specifications approximate a baseline similar to 3rd generation image intensifier tubes. The Gen 2+ HD tubes include a multi-alkali photocathode, a Resolution range of 55 to 72 lp/mm, and typically, a Signal-to-Noise Ratio of 15 to 23.

*The Armasight HDi tubes are designed to support international sales of Gen 2+ equipment to various countries.

Gen 2+ QS/QSi “Quick Silver” White Phosphor IIT

Experienced professionals know that nighttime scenes appear much more natural when displayed in black and white rather than the typical “night-vision green.” Our unique “Quick Silver” Gen 2+ IITs are characterized by high-contrast, white phosphor screens that offer black and white displays, which provide clearer details, better contrast, and more distinct shapes and shadows. They include a multi-alkali photocathode, a Resolution range of 47 to 54 lp/mm, and a Signal-to-Noise Ratio of 15 to 23.

*The Armasight QSi tubes are designed to support international sales of Gen 3 equipment to various countries.

Gen 3 Bravo/3E IIT

Our Bravo 3rd Generation image intensifier tubes deliver high quality night vision images. Generation 3 is the standard for the United States military. They include a Gallium Arsenide (GaAs) photocathode, a Resolution range of 57 to 64 lp/mm, and a Signal-to-Noise Ratio of 16 to 30.

*The Armasight 3E tubes are designed to support international sales of Gen 3 equipment to various countries.

Gen 3 “Ghost”/“Ghost E” White Phosphor IIT

Our unique Gen 3 “Ghost” White Phosphor IITs are characterized by high-contrast, white phosphor screens that offer black and white displays, which provide clearer details, better contrast, and more distinct shapes and shadows. They include a microchannel plate, GaAs photocathode, and a completely self-contained, high-voltage power supply. They have a Resolution range of 47 to 57 lp/mm, and a Signal-to-Noise Ratio of 16 to 30.

*The Armasight Ghost E tubes are designed to support international sales of Gen 3 equipment to various countries.

Gen 3 Alpha/3N IIT

These IITs are hand-picked to provide the highest quality available in our Gen 3 line. They include a microchannel plate, Thin Film GaAs photocathode, and a completely self-contained high-voltage power supply. A Resolution of 64 to 72 lp/mm and a Signal-to-Noise Ratio of 16 to 30 is typical.

*The Armasight 3N tubes are designed to support international sales of Gen 3 equipment to NATO countries.

Gen 3P IIT Pinnacle™

These Night Vision units are designed around the Gen 3P IIT Pinnacle* image intensifier tubes. These industry-leading tubes utilize a gated power supply that provides outstanding autogated performance. The Pinnacle tube minimizes the “halo” effect often associated with light interference caused by sources of bright light. They include Gallium Arsenide photocathodes, a Resolution range of 64 to 72 lp/mm, and a Signal-to-Noise Ratio of 16 to 30. *Units with Pinnacle tubes are not available for export.*

*Pinnacle is a registered trademark of ITT Night Vision.

FLAG Filmless Autogated IIT

Armasight’s FLAG (FilmLess AutoGated) image intensifier tubes (sometimes referred to as Gen 4 IITs) improve operational effectiveness for night vision users. The filmless microchannel plate provides a higher signal-to-noise ratio than standard Gen 3 IITs, resulting in better image quality in low-light conditions and minimizing the “halo” effect often associated with light interference caused by street lights and other sources of bright light. These units include Filmless GaAs photocathodes, an autogated power supply, a Resolution that ranges from 64 to 72 lp/mm and a Signal-to-Noise Ratio of 16 to 30. *Units with FLAG tubes are not available for export.*



Gen 2+ Quick Silver



Gen 3

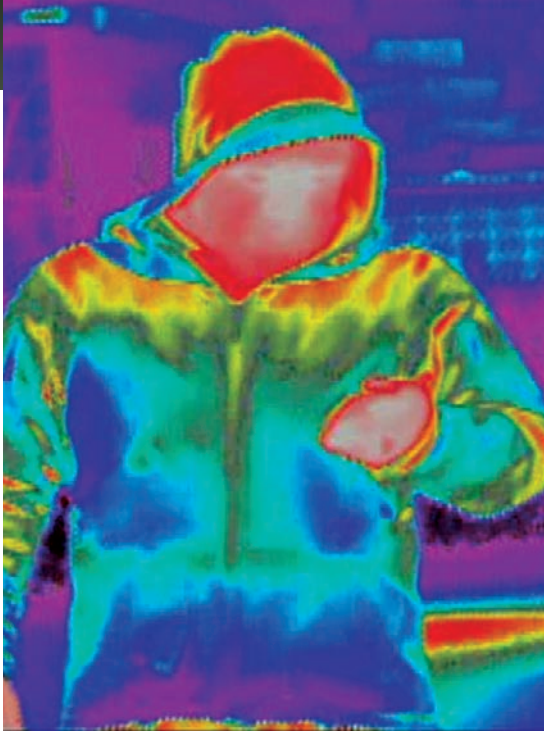


Gen 3 Ghost



FLAG

Thermal Imaging



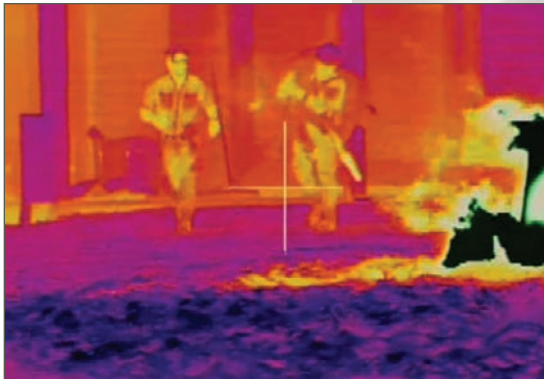
Thermal imaging cameras, also called infrared cameras, detect the heat given off by an object or person.

Everything we encounter gives off thermal energy. The hotter the object, the more thermal energy it emits. This emitted thermal energy is called a "heat signature." When objects have different heat signatures, they are displayed in different colors, which make it easy and quick to detect warm-blooded animals (including people) against cooler surroundings.

Thermal imaging cameras have lenses, just like visible light cameras. But in the case of thermal detection, the lenses focus waves from infrared energy onto an infrared sensor array. Thousands of sensors on the array convert the infrared energy into electrical signals, which create a video image. The infrared camera measures and displays a "thermal profile" of objects in relation to the temperature of any surrounding objects.

Thermal imaging technology also allows users to detect targets by cutting through snow, dust, smoke, fog, haze, and other atmospheric obscurants.

Armasight is convinced that its latest Thermal Imaging product line represents the most sophisticated devices available on the market to hunters, SWAT Teams, and the Military today, based on their superior price-to-performance value.



Digital Night Vision

Digital Night Vision is a fairly new technology that was introduced to the market within the last decade. Similar to other passive night vision devices, Digital NV allows users to view images in near-total darkness. The two main benefits of Digital Night Vision include an ability to work during daytime or nighttime without risking damage to the device, as well as real-time High Resolution Recording Capabilities in standard North American NTSC video format or European PAL video format. However, recording capability is not available on all models.

In terms of performance, some higher-end Digital NV systems can be compared to Gen 2 NVD, while the majority of low-end systems can be comparable to Gen 1. Use of powerful IR Illuminators such as the Armasight IR810W, drastically increases performance and viewing distances of Digital Night Vision Devices.

Digital Night Vision technology is very different from conventional I² night vision. The light enters the device through an objective lens, after which it is processed through a highly sensitive, charged coupling device (CCD), and then sent to a Liquid Crystal Display (LCD) where the image is displayed.

Night Vision Devices for the US Market

Name	Gen 1+	CORE	Gen 2+ SD	Gen 2+ ID	Gen 2+ HD	Gen 2+ QS	Gen 3 Bravo	Gen 3 Alpha	Gen 3 Ghost	Gen 3P	Gen 3 FLAG
MONOCULARS AND MULTI PURPOSE SYSTEMS											
Prime	+										
Spark		+									
Avenger			ABC	ABC		ABC			ABC		
Sirius			MGC	MGC		MGC			MGC		
N-14			ABC	ABC	ABC	ABC	ABC	ABC	ABC	ABC	ABC
Nyx-14				MGC		MGC	MGC	MGC	MGC	MGC	MGC
Nyx-14 PRO			ABC	ABC	ABC	ABC	ABC	ABC	ABC	ABC	ABC
PVS-14/6015			ABC	ABC	ABC						
PVS-14						MGC	MGC	MGC	MGC	MGC	MGC
GOGGLES											
Vega	+										
Ninox	+										
Spark-G		+									
Spark-X		+									
Nyx-7			ABC	ABC	ABC	ABC	ABC	ABC	ABC	ABC	ABC
Nyx-7 PRO				MGC	ABC	MGC	MGC	ABC	MGC	ABC	
PVS-7			ABC	MGC	ABC	MGC	MGC	ABC	MGC	ABC	
N-15			ABC	ABC	ABC	ABC	ABC	ABC	ABC	ABC	ABC
BINOCULARS											
Dark Strider	+										
Spark-B		+									
Eagle			ABC	ABC		ABC			ABC		
Discovery			ABC	ABC	ABC	ABC	ABC	ABC	ABC	ABC	
WEAPON SIGHTS											
WWZ	+										
Orion	+										
Vampire		+									
Spear			ABC	ABC							
Vulcan			ABC	ABC	ABC	MGC	MGC	MGC	MGC	MGC	MGC
Nemesis			ABC	ABC		ABC			ABC		
DAY/NIGHT SYSTEMS											
CO-Mini				ABC	ABC	MGC	MGC	MGC	MGC	MGC	MGC
CO-MR			MGC	MGC	ABC	MGC	MGC	ABC	MGC	ABC	
CO-LR				ABC	ABC	MGC	MGC	MGC	MGC	MGC	MGC

ABC - Automatic Brightness Control
MGC - Manual Gain Control

Thermal Imaging Devices for the US Market

Hz CoreName	160x120 30Hz Core	324x256 30Hz Core	324x256 60Hz Core	336x256 30Hz Core	336x256 60Hz Core	640x512 30Hz Core
MONOCULARS						
Prometheus 2						+
Prometheus 3					+	+
Prometheus 4	+					
Prometheus 5					+	
Prometheus 7	+					
BINOCULARS						
Helios 3						+
Helios 4	+					
Helios 5					+	
Helios 7	+					
WEAPON SIGHTS						
Zeus 2						+
Zeus 3					+	+
Zeus 4	+					
Zeus 5					+	
Zeus 7	+					
DAY/NIGHT SYSTEMS						
Apollo		+		+		+

Night Vision Devices for the International Market

Name	Gen 1+	CORE	Gen 2+ SDi*	Gen 2+ IDi*	Gen 2+ HDi*	Gen 2+ QSi*	Gen 3 E*	Gen 3 Ghost E*	Gen 3N**
MONOCULARS AND MULTI PURPOSE SYSTEMS									
Prime	+								
Spark		+							
Avenger			ABC	ABC		ABC		ABC	
Sirius			MGC	MGC		MGC		MGC	
N-14			ABC	ABC	ABC		ABC	ABC	ABC
Nyx-14				MGC		MGC	MGC	MGC	MGC
Nyx-14 PRO			ABC	ABC	ABC	ABC	ABC	ABC	ABC
PVS-14							MGC	MGC	MGC
GOGGLES									
Vega	+								
Ninox	+								
Spark-G		+							
Spark-X		+							
Nyx-7			ABC	ABC	ABC	ABC	ABC	ABC	ABC
Nyx-7 PRO				MGC	ABC	MGC	ABC	MGC	ABC
PVS-7							ABC	MGC	ABC
N-15			ABC	ABC	ABC	ABC	ABC	ABC	ABC
BINOCULARS									
Dark Strider	+								
Spark-B		+							
Eagle			ABC	ABC		ABC		ABC	
Discovery			ABC	ABC	ABC	ABC	ABC	ABC	ABC
WEAPON SIGHTS									
WWZ	+								
Orion	+								
Vampire		+							
Spear			ABC	ABC					
Vulcan			ABC	MGC	ABC	MGC	MGC	MGC	MGC
Nemesis			ABC	ABC		ABC		ABC	
DAY/NIGHT SYSTEMS									
CO-Mini					ABC		MGC	MGC	MGC
CO-MR			MGC	MGC	ABC	MGC	MGC		MGC
CO-LR				ABC	ABC	MGC	MGC	MGC	MGC

ABC - Automatic Brightness Control
MGC - Manual Gain Control

* State Department export license is required.

** For NATO countries only. State Department export license is required.

Thermal Imaging Devices for the International Market

Name	160x120 9Hz	160x120 30Hz *	324x256 30Hz *	336x256 9Hz	336x256 30Hz *	640x512 9Hz	640x512 30Hz *
MONOCULARS							
Prometheus 2						+	
Prometheus 3				+		+	
Prometheus 4	+						
Prometheus 5				+			
Prometheus 7	+						
BINOCULARS							
Helios 3						+	
Helios 4	+						
Helios 5				+			
Helios 7	+						
WEAPON SIGHTS							
Zeus 2							+
Zeus 3					+		+
Zeus 4		+					
Zeus 5					+		
Zeus 7		+					
DAY/NIGHT SYSTEMS							
Apollo			+				+

* State Department export license is required.



NIGHT VISION



PRIME

Night Vision Monoculars



Designed to offer the best possible performance at the lowest possible cost, the Armasight Prime is an exceptional 1st Generation night vision monocular. Whether you want to use it for camping, hunting, boating or security, the Armasight Prime will help you look out into the night, revealing a whole new nocturnal world previously hidden by darkness.

Available with either 3X or 5X magnifications, the Armasight Prime is more than just an entry-level night vision device – it is both compact and light-weight, and outperforms many other Gen 1 night vision monoculars in its class.

- Ⓐ **3x or 5x magnification**
- Ⓐ **Built-in infrared illuminator**
- Ⓐ **Compact and lightweight**
- Ⓐ **Water and fog resistant**
- Ⓐ **Limited two-year warranty**

Model	Prime 3X	Prime 5X
Magnification	3X	5X
Lens system	50mm F/1.2	80mm F/1.7
Field of view (°)	20.8	15
Dimensions (mm/in)	160 x 73 x 52 / 6.3 x 2.9 x 2	194 x 73 x 52 / 7.6 x 2.9 x 2
Weight (kg/lbs)	0.33 / 0.73	0.49 / 1.1

Part NO.	Name
PRODUCT FOR US AND INTERNATIONAL MARKETS	
NKMPRIME0311111	Prime 3X – Gen 1+
NKMPRIME0511111	Prime 5X – Gen 1+
ACCESSORIES	
ANKI000016	IR810 Long Range IR Illuminator w/Transfer Piece #21
ANKIW00016	IR810W Wide Angle Adjustable X-Long Range IR Illuminator w/Transfer Piece #21

SPARK

Multi-Purpose Night Vision Monocular

For years, development and improvement of consumer-oriented, single-stage Gen 1 technology has remained stagnant – until now! Traditional Gen 1 tubes are made of glass, which makes them fragile, easily damaged, and with relatively low resolution characterized by image edge distortion.

Armasight is proud to introduce its exclusive, revolutionary new approach to night vision – CORE (Ceramic Optical Ruggedized Engine) image intensifier tubes! While CORE does not contain a microchannel plate (and so by definition lands in the Gen 1 category), that is where the parallels end. Instead of glass, CORE tubes use a specially formulated ceramic compound fused with metal alloys similar to those used in production of Gen 2 and Gen 3 image intensifier tubes. Further advances in CORE technology have removed almost all edge distortion, dramatically increased photocathode sensitivity, and, most importantly, nearly doubled resolution up to 70 lp/mm!

The Armasight Spark is the perfect partner for this new hybrid tube-type – a rugged, lightweight, multi-purpose night vision monocular. With optional accessories, it can be hand-held or head-mounted. With a day scope adapter, it can convert your existing day scope into a night vision device at a cost-effective price. With an optional 3X a-focal lens and IR illuminator, the Spark can serve as a medium-range, ultra-high resolution spotting scope, and with the optional camcorder/camera adapter, it can even take video or still photography in near-to-total darkness.

The Armasight Spark is the ideal night vision unit for the outdoorsman or first responder who demands higher resolution, better image clarity, and greater durability than any standard Gen 1 unit can offer.

- Ⓐ **Compact, rugged design**
- Ⓐ **Weapon-mountable**
- Ⓐ **Head or helmet-mountable for hands-free usage**
- Ⓐ **Ergonomic, simple, easy to operate controls**
- Ⓐ **Utilizes single CR123A lithium battery**
- Ⓐ **Adaptable for use with cameras**
- Ⓐ **Built-in Infrared illuminator**
- Ⓐ **Limited two-year warranty**

Magnification	1X
Lens system	35mm F/1.7
Field of view (°)	30
Dimensions (mm/in)	159 x 49 x 82 / 6.3 x 1.9 x 3.2
Weight (kg/lbs)	0.37 / 0.8

Part NO.	Name
PRODUCT FOR US AND INTERNATIONAL MARKETS	
NSMSPARK01CCIC1	Spark – "CORE" IIT 60-70 lp/mm
ACCESSORIES	
ANHG000001	Goggle Kit #1
ANHM000002	Helmet Mount #3
ANHM000007	Mil-Spec MICH Helmet Mount Kit USA #105 with Adapter/Swing Arm #37
ANHM000008	Mil-Spec PASGT Helmet Mount Kit USA #106 with Adapter/Swing Arm #37
ANHG000002	Transfer Adapter/Swing Arm to PVS-7/PVS-14 Headset/Helmet #37
ANAF3X0023	3x A-Focal Lens Kit: Lens #22 with Adapter #23
ANAM000002	Scope Adapter Mount #5
ANAM000004	QRM - Quick Release Picatinny Mount Adapter #26/#142
ANAM000016	Camera Adapter #47
ANKI000032	AIM PRO - Advanced Integrated Mount Pro
ANKI000049	AIM PRO-L - Advanced Integrated Mount Pro Long
ANAM000045	Extended Rail Adapter #85
ANKI000016	IR810 Long Range IR Illuminator w/Transfer Piece #21
ANKIW00016	IR810W Wide Angle Adjustable X-Long Range IR Illuminator w/Transfer Piece #21
ANAM000006	Universal Camera Adapter #45
ANHC000001	Hard Shipping/Storage Case #101 (F100)



AVENGER

Night Vision Monocular



The Armasight Avenger is a high-tech, tough, and durable night vision monocular that delivers great performance at the lowest possible cost. Packed with high-tech features, the Avenger is a unit that is equally at home with the hunter as it is with the professional security officer or law enforcement professional. The Armasight Avenger can be mounted in front of a camcorder or camera for night photography.

The Armasight Avenger can be equipped with high-performance Gen 2+ and Gen 3 IITs including Green phosphor or Armasight's "Quick Silver" and "Ghost" IITs, which provide users with natural B&W night vision displays.

The Armasight Avenger is a night vision workhorse that will exceed the performance requirements of the most demanding professionals or casual night vision users.

- Ⓐ **3x magnification**
- Ⓐ **Auto-brightness control**
- Ⓐ **Utilizes single CR123A lithium battery**
- Ⓐ **Adaptable for use with cameras**
- Ⓐ **Built-in Infrared illuminator**
- Ⓐ **Water and fog resistant**
- Ⓐ **Limited two-year warranty**



Magnification	3X
Lens system	50mm F/1.2
Field of view (°)	18
Dimensions (mm/in)	210 x 75 x 60 / 8.2 x 2.9 x 2.3
Weight (kg/lbs)	0.65 / 1.4

Part NO.	Name
PRODUCTS FOR US MARKET	
NSMAVENGE32GDS1	Avenger SD – Gen 2+ "Standard Definition" 45-51 lp/mm
NSMAVENGE32GDI1	Avenger ID – Gen 2+ "Improved Definition" 47-54 lp/mm
NSMAVENGE3QGDI1	Avenger QS – Gen 2+ "Quick Silver" White Phosphor 47-54 lp/mm
NSMAVENGE3GGDA1	Avenger Ghost – Gen 3 "Ghost" White Phosphor 47-57 lp/mm
PRODUCTS FOR INTERNATIONAL MARKET	
NSMAVENGE32GIS1	Avenger SDi – Gen 2+ "Standard Definition"
NSMAVENGE32GI1	Avenger IDi – Gen 2+ "Improved Definition"
NSMAVENGE3QGII1	Avenger QSi – Gen 2+ "Quick Silver" White Phosphor
NSMAVENGE3GGEA1	Avenger Ghost E – Gen 3 "Ghost" White Phosphor FOM 1400
ACCESSORIES	
ANKIQ00160	QRM Kit: Quick Release Weapon Mount #26 w/IRAV Adapter
ANAM000016	Camera Adapter #47
ANKIC00160	Universal Camera Adapter Kit: UCA #45 w/IRAV Adapter
ANAM000045	Extended Rail Adapter #85
ANKI000024	IR850 Long Range IR Illuminator w/IRAV Adapter
ANKIW00024	IR850W Wide Angle Adjustable X-Long Range IR Illuminator w/IRAV Adapter
ANHC000001	Hard Shipping/Storage Case #101 (F100)

* State Department export license is required. Please check export regulations on Page 59

SIRIUS

Multi-Purpose Night Vision Monocular

The Armasight Sirius is a high-tech, tough, and durable multi-use night vision monocular that delivers great performance at a reasonable cost. Packed with high-tech features, the Sirius is a unit that is equally at home with the hunter as it is with the professional security officer or law enforcement professional. Mission configurable, the Sirius can be hand-held and head/ helmet mounted; it can be mounted onto a rifle, or it can be used for night photography. Optional 3X, 5X, or 8X lenses can turn it into a long-range night viewing device in seconds.

Despite the low cost, the Sirius features manual brightness control, bright light shut-off circuitry, and a built-in spot/flood IR illuminator. The Armasight Sirius can be equipped with high-performance Gen 2+ and Gen 3 IITs, including Green phosphor or Armasight's "Quick Silver" and "Ghost" IITs, which provide users with natural B&W night vision displays.

- Ⓐ **Compact, rugged design**
- Ⓐ **Weapon-mountable**
- Ⓐ **Head or helmet-mountable for hands-free usage**
- Ⓐ **Auto-brightness control**
- Ⓐ **Bright light cut-off**
- Ⓐ **Utilizes single CR123A lithium battery or AA Alkaline, adapter included**
- Ⓐ **Adaptable for use with cameras**
- Ⓐ **Built-in Infrared illuminator and flood lens**
- Ⓐ **Limited two-year warranty**

Magnification	1X
Lens system	24mm F/1.2
Field of view (°)	40
Dimensions (mm/in)	157 x 60 x 75 / 6.2 x 2.4 x 2.9
Weight (kg/lbs)	0.46 / 1.0

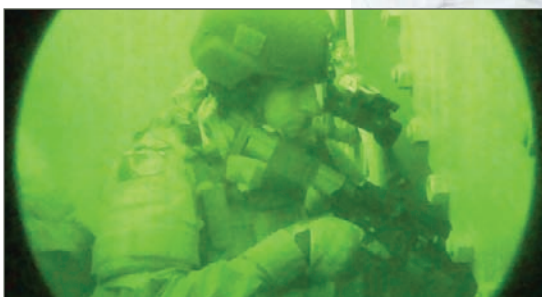
Part NO.	Name
PRODUCTS FOR US MARKET	
NSMSIRIUS12MDS1	Sirius SD MG – Gen 2+ "Standard Definition" 45-51 lp/mm, Manual Gain
NSMSIRIUS12MDI1	Sirius ID MG – Gen 2+ "Improved Definition" 47-54 lp/mm, Manual Gain
NSMSIRIUS1QMDI1	Sirius QS MG – Gen 2+ "Quick Silver" White Phosphor 47-54 lp/mm, Manual Gain
NSMSIRIUS1GMDA1	Sirius Ghost MG – Gen 3 "Ghost" White Phosphor 47-57 lp/mm, Manual Gain
PRODUCTS FOR INTERNATIONAL MARKET *	
NSMSIRIUS12MIS1	Sirius SDi MG – Gen 2+ "Standard Definition", Manual Gain
NSMSIRIUS12MI1	Sirius IDi MG – Gen 2+ "Improved Definition", Manual Gain
NSMSIRIUS1QMII1	Sirius QSi MG – 2+ "Quick Silver" White Phosphor, Manual Gain
NSMSIRIUS1GMEA1	Sirius Ghost E MG – Gen 3 "Ghost" White Phosphor FOM 1400, Manual Gain
ACCESSORIES	
ANHG000004	Goggle Kit #2
ANHM000001	Helmet Mount #4
ANHM000007	Mil-Spec MICH Helmet Mount Kit USA #105 with Adapter/Swing Arm #37
ANHM000008	Mil-Spec PASGT Helmet Mount Kit USA #106 with Adapter/Swing Arm #37
ANHG000002	Transfer Adapter/Swing Arm to PVS-7/PVS-14 Headset/Helmet #37
ANAF3X0023	3x A-Focal Lens Kit: Lens #22 with Adapter #23
ANAF5X0023	5x A-Focal Lens with Adapter #23
ANLE5X0001	5x Lens #13 for Sirius
ANLE8X0001	8x Lens #17 for Sirius
ANAM000001	Scope Adapter Mount #6
ANAM000004	QRM - Quick Release Weapon Mount #26/#142
ANKI000032	AIM PRO - Advanced Integrated Mount Pro
ANKI000049	AIM PRO-L - Advanced Integrated Mount Pro Long
ANAM000016	Camera Adapter #47
ANAM000006	Universal Camera Adapter #45
ANKI000017	IR850 Long Range IR Illuminator w/Transfer Piece #21
ANKIW00017	IR850W Wide Angle Adjustable X-Long Range IR Illuminator w/Transfer Piece #21
ANHCO00001	Hard Shipping/Storage Case #101 (F100)

* State Department export license is required. Please check export regulations on Page 59



NYX-14 N-14

Multi-Purpose Night Vision Monoculars



The Armasight Nyx-14 is the new standard by which all compact multi-use monoculars will be judged in the future. The Nyx-14 uses optics that are equal to or better than current Military issue night vision units, built into a tough, compact, and ergonomic composite housing. Armasight designed and built this unit to surpass MIL-SPEC-810 specifications – as a result, the Armasight Nyx-14 can withstand saltwater, rain, high humidity and temperature extremes, and still provide unsurpassed levels of performance.

The Nyx-14 mini-monocular is equipped with manual variable gain control so that the user can select the image brightness level, in order to properly adjust for ambient light levels in the environment. The Armasight Nyx-14 is available with an array of accessories such as 3X, 5X, and 8X magnification lenses for mid-to-long range viewing; head or helmet mounts to allow the unit to be worn as a mono-goggle; various weapon mounts for tactical or hunting applications; and additional, high-powered IR illuminators for long-range use. The Armasight NYX-14 can be equipped with high-performance Gen 2+ and Gen 3 IITs including Green phosphor or Armasight's "Quick Silver" and "Ghost" IITs, which provide users with natural B&W night vision displays. The Armasight NYX-14 is a high-standard night vision device that will meet the requirements of the most demanding law enforcement officer, military professional, or casual civilian user.

The Armasight N-14 night vision monocular is equipped with the same features as the Nyx-14, with the exception of manual gain control.

- Ⓐ **Compact, rugged design**
- Ⓐ **Waterproof**
- Ⓐ **Weapon-mountable**
- Ⓐ **Head or helmet-mountable for hands-free usage**
- Ⓐ **Manual variable gain control (Nyx-14)**
- Ⓐ **Auto-brightness control**
- Ⓐ **Bright light cut-off**
- Ⓐ **Ergonomic, simple, easy to operate controls**
- Ⓐ **Utilizes single CR123A lithium or AA battery**
- Ⓐ **Adaptable for use with cameras**
- Ⓐ **Built-in Infrared illuminator and flood lens**
- Ⓐ **Limited two-year warranty**

Model	Nyx-14	N-14
Magnification	1X	1X
Lens system	27mm F/1.2	27mm F/1.2
Field of view (°)	40	40
Dimensions (mm/in)	140 x 49 x 69 / 5.5 x 1.9 x 2.7	140 x 49 x 69 / 5.5 x 1.9 x 2.7
Weight (kg/lbs)	0.4 / 0.88	0.34 / 0.75

Part NO.	Name
PRODUCTS FOR US MARKET	
NSMNYX140129DI1	Nyx-14 ID MG – Gen 2+ "Improved Definition" 47-54 lp/mm, Manual Gain
NSMNYX1401Q9DI1	Nyx-14 QS MG – Gen 2+ "Quick Silver" White Phosphor 47-54 lp/mm, Manual Gain
NSMNYX140139DB1	Nyx-14 3-Bravo MG – Gen 3, 57 lp/mm (min) - 64 lp/mm (typical), Manual Gain
NSMNYX140139DA1	Nyx-14 3-Alpha MG – Gen 3 High Performance 64-72 lp/mm, Manual Gain
NSMNYX1401P9DA1	Nyx-14 3P MG – Gen 3 High Performance ITT 64-72 lp/mm PINNACLE® Thin-Filmed Auto-Gated IIT, Manual Gain
NSMNYX1401G9DA1	Nyx-14 Ghost MG – Gen 3 "Ghost" White Phosphor 47-57 lp/mm, Manual Gain
NSMNYX1401F9DA1	Nyx-14 FLAG MG – "FLAG" Filmless Auto-Gated IIT (comparable to Gen 4) 64-72 lp/mm, Manual Gain
NSMN14000126DS1	N-14 SD – Gen 2+ "Standard Definition" 45-51 lp/mm
NSMN14000126DI1	N-14 ID – Gen 2+ "Improved Definition" 47-54 lp/mm
NSMN14000126DH1	N-14 HD – Gen 2+ "High Definition" 55-72 lp/mm
NSMN140001Q6DI1	N-14 QS – Gen 2+ "Quick Silver" White Phosphor 47-54 lp/mm
NSMN14000136DB1	N-14 3 Bravo – Gen 3, 57 lp/mm (min) - 64 lp/mm (typical)
NSMN14000136DA1	N-14 3 Alpha – Gen 3 High Performance 64-72 lp/mm
NSMN140001P6DA1	N-14 3P – Gen 3 High Performance ITT 64-72 lp/mm PINNACLE® Thin-Filmed Auto-Gated IIT
NSMN140001G6DA1	N-14 Ghost – Gen 3 "Ghost" White Phosphor 47-57 lp/mm
NSMN140001F6DA1	N-14 FLAG – "FLAG" Filmless Auto-Gated IIT (comparable to Gen 4) 64-72 lp/mm
PRODUCTS FOR INTERNATIONAL MARKET *	
NSMNYX140129I1	Nyx-14 IDi MG – Gen 2+ "Improved Definition", Manual Gain
NSMNYX1401Q9I1	Nyx-14 QSi MG – Gen 2+ "Quick Silver" White Phosphor, Manual Gain
NSMNYX1401G7EA1	Nyx-14 Ghost E MG – Gen 3 "Ghost" White Phosphor FOM 1400, Manual Gain
NSMNYX140139EA1	Nyx-14 3E MG – Gen 3 High Performance FOM 1400, Manual Gain
NSMNYX140139NA1	Nyx-14 3N MG – Gen 3 High Performance FOM 1600, Manual Gain
NSMN14000126IS1	N-14 SDi – 2+ "Standard Definition"
NSMN14000126II1	N-14 IDi – Gen 2+ "Improved Definition"
NSMN140001Q6II1	N-14 QSi – Gen 2+ "Quick Silver" White Phosphor
NSMN14000126IH1	N-14 HDi – Gen 2+ "High Definition"
NSMN140001G6EA1	N-14 Ghost E – Gen 3 "Ghost" White Phosphor FOM 1400
NSMN14000136EA1	N-14 3E – Gen 3 High Performance FOM 1400
NSMN14000136NA1	N-14 3N – Gen 3 High Performance FOM 1600
ACCESSORIES SEE ON PAGE 17	

* State Department export license is required. Please check export regulations on Page 59





NYX-14 PRO

Multi-Purpose Night Vision Monocular

The Nyx-14 PRO has a built-in IR Illuminator and Class 1 covert IR laser pointer with a push-button control. The built-in IR Laser Pointer allows users to communicate targets to other team members easily and conveniently. The Armasight Nyx-14 PRO is available with an array of accessories for tactical or hunting applications. The Nyx-14 PRO can be used as a handheld, head-mounted, helmet-mounted or weapon-mounted device to allow for increased mobility, firing capabilities, short-range surveillance, map reading, vehicle maintenance, and First-Aid administration.

The Nyx-14 PRO uses Multi-coated, all-glass optics and high-performance image intensifier tubes, which are protected by the compact, rugged, and lightweight composite housing.

The Nyx-14 PRO is available in Gen 2+ and Gen 3 variants, including Green phosphor or Armasight's "Quick Silver" and "Ghost" IITs, which provide users with natural B&W night vision displays.

The Nyx-14 PRO is the only night vision device that can be trusted to help users successfully face the challenge of meeting – and completing – their missions with ease.

- Ⓐ **Built-in Class 1 covert IR laser pointer**
- Ⓐ **Compact, rugged design**
- Ⓐ **Waterproof**
- Ⓐ **Weapon-mountable**
- Ⓐ **Head or helmet-mountable for hands-free usage**
- Ⓐ **Auto-brightness control**
- Ⓐ **Bright light cut-off**
- Ⓐ **Ergonomic, simple, easy to operate controls**
- Ⓐ **Utilizes single CR123A lithium or AA battery**
- Ⓐ **Adaptable for use with cameras**
- Ⓐ **Built-in Infrared illuminator and flood lens**
- Ⓐ **Limited two-year warranty**



Magnification	1X
Lens system	27mm F/1.2
Field of view (°)	40
Dimensions (mm/in)	140 x 49 x 69 / 5.5 x 1.9 x 2.7
Weight (kg/lbs)	0.4 / 0.88

Part NO.	Name
PRODUCTS FOR US MARKET	
NSMNYX14P126DS1	Nyx-14 PRO SD – Gen 2+ "Standard Definition" 45-51 lp/mm
NSMNYX14P126DI1	Nyx-14 PRO ID – Gen 2+ "Improved Definition" 47-54 lp/mm
NSMNYX14P126DH1	Nyx-14 PRO HD – Gen 2+ "High Definition" 55-72 lp/mm
NSMNYX14P1Q6DI1	Nyx-14 PRO QS – Gen 2+ "Quick Silver" White Phosphor 47-54 lp/mm
NSMNYX14P136DB1	Nyx-14 PRO 3 Bravo – Gen 3, 57 lp/mm (min) - 64 lp/mm (typical)
NSMNYX14P136DA1	Nyx-14 PRO 3 Alpha – Gen 3 High Performance 64-72 lp/mm
NSMNYX14P1P6DA1	Nyx-14 PRO 3P – Gen 3 High Performance ITT 64-72 lp/mm PINNACLE® Thin-Filmed Auto-Gated IIT
NSMNYX14P1G6DA1	Nyx-14 PRO Ghost – Gen 3 "Ghost" White Phosphor 47-57 lp/mm
NSMNYX14P1F6DA1	Nyx-14 PRO FLAG – "FLAG" Filmless Auto-Gated IIT (comparable to Gen 4) 64-72 lp/mm
PRODUCTS FOR INTERNATIONAL MARKET *	
NSMNYX14P126IS1	Nyx-14 PRO SDi – 2+ "Standard Definition"
NSMNYX14P126II1	Nyx-14 PRO IDi – Gen 2+ "Improved Definition"
NSMNYX14P1Q6II1	Nyx-14 PRO QSi – Gen 2+ "Quick Silver" White Phosphor
NSMNYX14P126IH1	Nyx-14 PRO HDi – Gen 2+ "High Definition"
NSMNYX14P1G6EA1	Nyx-14 PRO Ghost E – Gen 3 "Ghost" White Phosphor FOM 1400
NSMNYX14P136EA1	Nyx-14 PRO 3E – Gen 3 High Performance FOM 1400
NSMNYX14P136NA1	Nyx-14 PRO 3N – Gen 3 High Performance FOM 1600

ACCESSORIES SEE ON PAGE 17

* State Department export license is required. Please check export regulations on Page 59

Accessories for NYX-14, N-14, NYX-14 PRO

Part NO.	Name
ANKI000004	Tactical Kit: Goggle Kit, Sacrificial Window, Demist Shield, 3x A-Focal Lens, AIM-Pro L, Shuttered Eyeguard, Hard Storage/Caring Case
ANKI000005	Long Range Kit: 8x Lens, IR850W X-Long Range IR Illuminator, Weaver Rail Adapter, Universal Camera/Video Adapter, Hard Storage/Caring Case
ANKI000006	Ultimate Kit: Goggle Kit, 5x Lens, IR850W X-Long Range IR Illuminator, Weaver Rail Adapter, Universal Camera/Video Adapter, AIM-Pro, Hard Storage/Caring Case
ANKI000007	Select Kit: Goggle kit, 3x A-Focal Lens, Quick Release Weapon Mount, IR850W X-Long Range IR Illuminator, Weaver Rail Adapter
ANKI000008	Basic Kit: Goggle Kit, Quick Release Weapon Mount
ANHG000004	Goggle Kit #2
ANHM000001	Helmet Mount #4
ANHM000007	Mil-Spec MICH Helmet Mount Kit USA #107 with Adapter/Swing Arm #37
ANHM000008	Mil-Spec PASGT Helmet Mount Kit USA #108 with Adapter/Swing Arm #37
ANHG000002	Transfer Adapter/Swing Arm to PVS-7/PVS-14 Headset/Helmet #37
ANAF3X0002	3x A-Focal Lens #22 (Nyx-14, Nyx-7 PRO)
ANAF5X0002	5x A-Focal Lens (Nyx-14, Nyx-7 PRO)
ANLE5X0002	5x Lens #12
ANLE8X0002	8x Lens #16
ANEC000001	Shuttered Eyeguard #82
ANAM000004	QRM - Quick Release Weapon Mount #26/#142
ANAM000002	Scope Adapter Mount #5
ANCA000001	Time Tracker System #83
ANKI000032	AIM PRO - Advanced Integrated Mount Pro
ANKI000049	AIM PRO-L - Advanced Integrated Mount Pro Long
ANAM000045	Extended Rail Adapter #85
ANLC000001	Demist Shield #34
ANLC000002	Sacrificial Window #30
ANAM000029	Camera Adapter #46
ANAM000006	Universal Camera Adapter #45
ANRA000001	Dovetail#21
ANKI000017	IR850 Long Range IR Illuminator w/Transfer Piece #21
ANKIW00017	IR850W Wide Angle Adjustable X-Long Range IR Illuminator w/Transfer Piece #21
ANH000001	Hard Shipping/Storage Case #101 (F100)



PVS-14/6015

Multi-Purpose Night Vision Monocular

The United States Military commissioned the AN/PVS-14 multi-purpose night vision monocular in the late '90s. Today, there are more AN/PVS-14 units currently deployed in NATO Armies than any other night vision device. The AN/PVS-14 was the first real multi-use monocular, allowing it to fulfill a huge variety of Military needs. It is also one of the most popular night vision units for law enforcement professionals.

The Armasight PVS-14 uses the same framework, and its battle-proven design is lightweight and tough with superb optics. The PVS-14 is compatible with a host of accessories, allowing it to be hand-held, head/helmet-mounted, and weapon or camera-mounted. Designed for the most demanding nighttime Military or law enforcement operations, it is one of the best systems available. The Armasight PVS-14 can be equipped with high-performance Gen 2+ and Gen 3 IITs, including Green phosphor or Armasight's "Quick Silver" and "Ghost" IITs, which provide users with natural B&W night vision displays.

- Ⓐ **Compact, rugged design**
- Ⓐ **Waterproof**
- Ⓐ **Head or helmet-mountable for hands-free usage**
- Ⓐ **Ergonomic, simple, easy to operate controls**
- Ⓐ **Built-in Infrared illuminator**
- Ⓐ **Limited two-year warranty**

Magnification	1X
Lens system	27mm F/1.2
Field of view (°)	40
Dimensions (mm/in)	114 x 51 x 57 / 4.5 x 2.0 x 2.2
Weight (kg/oz)	0.35 / 12.4

Part NO.	Name
PRODUCTS FOR US MARKET	
NAM601500126DS1	6015 SD – Gen 2+ "Standard Definition" 45-51 lp/mm
NAM601500126DI1	6015 ID – Gen 2+ "Improved Definition" 47-54 lp/mm
NAM601500126DH1	6015 HD – Gen 2+ "High Definition" 55-72 lp/mm
NAMPVS1401Q9DI1	PVS-14 QS – Gen 2+ "Quick Silver" White Phosphor 47-54 lp/mm, Manual Gain
NAMPVS140139DB1	PVS-14 3 Bravo – Gen 3, 57 lp/mm (min) - 64 lp/mm (typical), Manual Gain
NAMPVS140139DA1	PVS-14 3 Alpha – Gen 3 High Performance 64-72 lp/mm, Manual Gain
NAMPVS1401P9DA1	PVS-14 3P – Gen 3 High Performance IIT 64-72 lp/mm PINNACLE® Thin-Filmed Auto-Gated IIT, Manual Gain
NAMPVS1401G9DA1	PVS-14 Ghost – Gen 3 "Ghost" White Phosphor 47-57 lp/mm, Manual Gain
NAMPVS1401F9DA1	PVS-14 FLAG – "FLAG" Filmless Auto-Gated IIT (comparable to Gen 4) 64-72 lp/mm, Manual Gain
PRODUCTS FOR INTERNATIONAL MARKET *	
NAMPVS1401G9EA1	PVS-14 Ghost E – Gen 3 "Ghost" White Phosphor FOM 1400
NAMPVS140139EA1	PVS-14 3E – Gen 3 High Performance FOM 1400
NAMPVS140139NA1	PVS-14 3N – Gen 3 High Performance FOM 1600
ACCESSORIES	
ANHM000005	MICH Helmet Mount Assembly USA #107
ANHM000006	PASGT Helmet Mount Assembly USA #108
ANAF3X0003	A-Focal 3x Mil-Spec Magnifier Lens #99
ANAF5X0001	A-Focal 5x Mil-Spec Magnifier Lens #100
ANAF3X000P	3x A-Focal Lens #22 with Adapter #24/#25
ANAF5X000P	5x A-Focal Lens with Adapter #24/#25
ANAM000007	PVS14 Weapons Mount #109
ANKIW00118	IR850W Wide Angle Adjustable X-Long Range IR Illuminator w/Adapter #118
ANKI000P32	AIM-PRO PVS14 Kit - Consist of: AIM-Pro & AIM PVS14 Bracket #62
ANKI000P49	AIM-PRO-L PVS14 Kit - Consist of: AIM-Pro-L & AIM PVS14 Bracket #62
ANAM000045	Extended Rail Adapter #85
ANHC000001	Hard Shipping/Storage Case # 101 (F100)

* State Department export license is required. Please check export regulations on Page 59

VEGA NINOX

Night Vision Goggles



If low-cost, high quality, head-mounted night vision goggles are what you need, the Armasight Vega or Ninnox units are the best choices for you! The Generation 1 Vega and Ninnox come complete with headgear, which allows the unit to be mounted for hands-free operation. It is the perfect inexpensive, hands-free option for nighttime air soft games, paintball, hunting, or security - Armasight night vision goggles will give you the edge! An integrated, short-range IR illuminator allows the unit to work well even in complete darkness, and an optional long-range infrared illuminator will dramatically boost the viewing range when you need it most. The Armasight Vega and Ninnox feature all-glass optics, easy to operate controls, and rugged, reinforced composite housing.

The Armasight Vega night vision monocular utilizes high-performance image intensifier tubes to provide clear and crisp images even in the darkest conditions. The Armasight Ninnox utilizes two image intensifier tubes. This dual tube design provides increased depth perception and outstanding clarity.



- Ⓐ **Compact and lightweight**
- Ⓐ **Designed for hands-free operations**
- Ⓐ **High resolution Gen 1+ image intensifier tube**
- Ⓐ **Built-in flood infrared illuminator**
- Ⓐ **Fully adjustable headgear for ultimate comfort**
- Ⓐ **Flip-up headgear**
- Ⓐ **Can be used in conjunction with long range IR illuminator**
- Ⓐ **Water and fog resistant**
- Ⓐ **Limited two-year warranty**

Model	Vega	Ninox
Magnification	1X	1X
Lens system	35mm F/1.7	35mm F/1.7
Field of view (°)	35	35
Dimensions (mm/in)	147 x 82 x 46 / 5.8 x 3.2 x 1.8	189 x 140 x 63 / 7.4 x 5.5 x 2.5
Weight (kg/lbs)	0.25 / 0.54	0.65 / 1.4

Part NO.	Name
PRODUCT FOR US AND INTERNATIONAL MARKETS	
NKGVEGA00111111	Vega – Gen 1+
NKGNINOX01111111	Ninox – Gen 1+
ACCESSORIES	
ANKI000016	IR810 Long Range IR Illuminator w/Transfer Piece #21





SPARK-G SPARK-X

Night Vision Goggles



Armasight Spark-G night vision goggle and Spark-X dual tube night vision goggle systems built around CORE (Ceramic Optical Ruggedized Engine) image intensifier tubes. Unlike Gen 1 Image intensifier tubes, which are fragile because they are made from glass, CORE™ IITs are made just like Gen 2 and Gen 3 - by fusing metal alloys with ceramic compounds. CORE™ technology is based on durable elements and allows tight component stacking, resulting in image tubes that are exceptionally shockproof and vibration-resistant. Robust packaging protects easy-to-break protrusions common in Gen 1 tubes, and allows for a streamlined design that is lighter, more compact, and more reliable than average night vision devices.

The CORE™ platform offers 'best in class' resolution with 60-70 lp/mm and an increased photocathode sensitivity level of upwards of 400µA/lm, providing high image quality even in difficult ambient light conditions, rivaling high-end Gen 2 image tubes.

The Armasight Spark-G is a rugged and lightweight night vision monocular. The Armasight Spark-X utilizes two CORE image intensifier tubes. This dual tube design provides increased depth perception and outstanding clarity. The Armasight Spark-G and Spark-X both come complete with headgear, which allows the unit to be mounted for hands-free operation.

- Ⓐ **Compact, rugged design**
- Ⓐ **Weapon-mountable**
- Ⓐ **Head or helmet-mountable for hands-free usage**
- Ⓐ **Ergonomic, simple, easy to operate controls**
- Ⓐ **Utilizes single CR123A lithium battery**
- Ⓐ **Adaptable for use with cameras**
- Ⓐ **Built-in Infrared illuminator**
- Ⓐ **Limited two-year warranty**

Model	Spark G	Spark X
Magnification	1X	1X
Lens system	35mm F/1.7	35mm F/1.7
Field of view (°)	30	30
Dimensions (mm/in)	159 x 49 x 82 / 6.3 x 1.9 x 3.2	161 x 142 x 63 / 6.3 x 5.6 x 2.5
Weight (kg/lbs)	0.37 / 0.82	0.75 / 1.65

Part NO.	Name
PRODUCTS FOR US AND INTERNATIONAL MARKETS	
NSGSPARK01CCIC1	Spark-G – "CORE" IIT, 60-70 lp/mm
NSGSPARKX1CCIC1	Spark-X – "CORE" IIT, 60-70 lp/mm
ACCESSORIES	
ANHM000002	Helmet Mount #3
ANKI000016	IR810 Long Range IR Illuminator w/Transfer Piece #21
ANKIW00016	IR810W Wide Angle Adjustable X-Long Range IR Illuminator w/Transfer Piece #21

NYX-7

Night Vision Goggle

The Armasight Nyx-7 is a bi-ocular night vision goggle system built around high-grade Gen 2+ or Gen 3 image intensifier tubes. They are an exceptional choice for hands-free use. Built with high-grade optics and simple, reliable electronics, the Nyx-7 provides bright and clear night vision images, even in the most trying conditions. This unit includes a built-in IR light source for reading maps or basic, short-range illumination in complete darkness.

The Armasight Nyx-7 is available with a variety of accessories such as 3X, 5X and 8X magnification lenses for mid-long range viewing, head or helmet mounts for hands-free operation, and additional, high-powered IR illuminators for long-range use.

Water-resistant, rugged, light, and compact, the Nyx-7 is the perfect hands-free unit for a variety of tough operations.

- Ⓐ **Lightweight, compact rugged night vision goggle system**
- Ⓐ **Multi-purpose: hand-held, head-mounted or helmet-mounted**
- Ⓐ **Comfortable, flip-up headgear**
- Ⓐ **Multi-coated all-glass optics**
- Ⓐ **Auto-brightness control**
- Ⓐ **Utilizes single CR123A lithium battery or AA Alkaline, adapter included**
- Ⓐ **Water and fog resistant**
- Ⓐ **Limited two-year warranty**

Magnification	1X
Lens system	24mm F/1.2
Field of view (°)	40
Dimensions (mm/in)	150 x 102 x 70 / 5.9 x 4.0 x 2.7
Weight (kg/lbs)	0.45 / 1.0

Part NO.	Name
PRODUCTS FOR US MARKET	
NSGNYX70012GDS1	Nyx-7 SD – Gen 2+ "Standard Definition" 45-51 lp/mm
NSGNYX70012GDI1	Nyx-7 ID – Gen 2+ "Improved Definition" 47-54 lp/mm
NSGNYX7001QGD11	Nyx-7 QS – Gen 2+ "Quick Silver" White Phosphor 47-54 lp/mm
NSGNYX700123DH1	Nyx-7 HD – Gen 2+ "High Definition" 55-72 lp/mm
NSGNYX700133DB1	Nyx-7 3 Bravo – Gen 3, 57 lp/mm (min) - 64 lp/mm (typical)
NSGNYX700133DA1	Nyx-7 3 Alpha – Gen 3 High Performance 64-72 lp/mm
NSGNYX7001GGDA1	Nyx-7 Ghost – Gen 3 "Ghost" White Phosphor 47-57 lp/mm
NSGNYX7001P3DA1	Nyx-7 3P – Gen 3 High Performance ITT 64-72 lp/mm PINNACLE® Thin-Filmed Auto-Gated IIT
PRODUCTS FOR INTERNATIONAL MARKET *	
NSGNYX70012GIS1	Nyx-7 SDi – Gen 2+ "Standard Definition"
NSGNYX70012GI11	Nyx-7 IDi – Gen 2+ "Improved Definition"
NSGNYX7001QG111	Nyx-7 QSi – Gen 2+ "Quick Silver" White Phosphor
NSGNYX700123IH1	Nyx-7 HDi – Gen 2+ "High Definition"
NSGNYX7001GGEA1	Nyx-7 Ghost E – Gen 3 "Ghost" White Phosphor FOM 1400
NSGNYX700133EA1	Nyx-7 3E – Gen 3 High Performance FOM 1400
NSGNYX700133NA1	Nyx-7 3N – Gen 3 High Performance FOM 1600
ACCESSORIES	
ANHM000001	Helmet Mount #4
ANHM000009	Mil-Spec MICH Helmet Mount Kit USA #105 with Adapter/Swing Arm #59
ANHM000010	Mil-Spec PASGT Helmet Mount Kit USA #106 with Adapter/Swing Arm #59
ANAM000034	Transfer Adapter to PVS-7/PVS-14 Headset/Helmet #59
ANAF3X0023	3x A-Focal Lens Kit: Lens #22 with Adapter #23
ANAF5X0023	5x A-Focal Lens with Adapter #23
ANLE5X0003	5x Lens #12 with Adapter #15
ANLE8X0005	8x Lens #16 with Adapter #20
ANKI000017	IR850 Long Range IR Illuminator w/Transfer Piece #21
ANKIW00017	IR850W Wide Angle Adjustable X-Long Range IR Illuminator w/Transfer Piece #21
ANHC000001	Hard Shipping/Storage Case (F100) #101

* State Department export license is required. Please check export regulations on Page 59



PVS-7

Night Vision Goggle



The PVS-7 is the most widely recognized and dependable United States Military night vision goggle system available. The AN/PVS-7B/D system has proven itself in combat due to its rugged, ergonomic design.

The Armasight PVS-7 can be equipped with high-performance Gen 2+ and Gen 3 variants of image intensifier tubes, using either Green phosphor or Armasight's "Quick Silver" and "Ghost" image intensifier tubes, which provide users with natural B&W night vision image.

The PVS-7 is equipped with Automatic Brightness Control (ABC), which automatically adjusts the brightness of the image tube to achieve the highest quality image resolution under varying light conditions, as well as a built-in infrared illuminator that allows the user to operate in total darkness. The PVS-7 also has an excessive-light cut-off feature that protects the image tube from bright light sources, and a flip-up shut-off feature when used with the optional helmet mount assembly. The PVS-7 is equipped with two LED indicators: yellow for a low battery, and red to alert the operator that the IR illuminator is on. Both are displayed on the eyepiece screen. Lightweight, rugged, and versatile, the Armasight PVS-7 can be hand-held, head-mounted, and helmet-mounted. The dismounted goggle can also be used as an excellent long-range viewer with optional afocal magnifier lenses.

- Ⓐ **Compact, rugged design**
- Ⓐ **Waterproof**
- Ⓐ **Head or helmet-mountable for hands-free usage**
- Ⓐ **Ergonomic, simple, easy to operate controls**
- Ⓐ **Auto-brightness control**
- Ⓐ **Bright light cut-off**
- Ⓐ **Built-in Infrared illuminators**
- Ⓐ **Limited two-year warranty**

Magnification	1X
Lens system	27mm; F1.2
Field of view (°)	40
Dimensions (mm/in)	162 x 152 x 76 / 6.4 x 6.0 x 3.0
Weight (kg/oz)	0.68 / 24

STANDARD ACCESSORIES:

Head Mount Assembly – Allows for hands free operation. Accommodates user’s head size and eye positioning.

Medium & Thick Brow Pads – Changeable pads.

Eye Cups - Prevents the emission of stray light or facial reflections.

Soft Carrying Case – Provides convenient storage.

Day Light Filter – Filters excessive light. Protects objective lens from the elements.

Shoulder Strap – Attaches to the PVS-7 carrying case for easy portability.

Lens Paper – Used to lightly clean the objective and eyepiece glass surfaces.

Sacrificial Window - Shields the optics from sand, air particles, or anything that may scratch the lens.

Demist Shields - Snaps onto the eyepiece to prevent condensation from forming on the optics.

Operator’s Manual – Instructional users guide.

Batteries – Two (2) AA.



Part NO.	Name
PRODUCTS FOR US MARKET	
NAMPVS700123DS1	PVS-7 SD – Gen 2+ "Standard Definition" 45-51 lp/mm
NAMPVS700127DI1	PVS-7 ID MG – Gen 2+ "Improved Definition" 47-54 lp/mm, Manual Gain!
NAMPVS700123DH1	PVS-7 HD – Gen 2+ "High Definition" 55-72 lp/mm
NAMPVS7001Q7DI1	PVS-7 QS MG – Gen 2+ "Quick Silver" White Phosphor 47-54 lp/mm, Manual Gain!
NAMPVS700133DB1	PVS-7 3 Bravo – Gen 3, 57 lp/mm (min) - 64 lp/mm (typical)
NAMPVS700137DB1	PVS-7 3 Bravo MG – Gen 3, 57 lp/mm (min) - 64 lp/mm (typical), Manual Gain
NAMPVS700133DA1	PVS-7 3 Alpha – Gen 3 High Performance 64-72 lp/mm
NAMPVS7001G7DA1	PVS-7 Ghost MG – Gen 3 "Ghost" White Phosphor 47-57 lp/mm, Manual Gain!
NAMPVS7001P3DA1	PVS-7 3P – Gen 3 High Performance ITT 64-72 lp/mm PINNACLE® Thin-Filmed Auto-Gated IIT
NAMPVS700123DS2	PVS-7 SD TAN – Gen 2+ "Standard Definition" 45-51 lp/mm
NAMPVS700127DI2	PVS-7 ID MG TAN – Gen 2+ "Improved Definition" 47-54 lp/mm, Manual Gain!
NAMPVS700123DH2	PVS-7 HD TAN – Gen 2+ "High Definition" 55-72 lp/mm
NAMPVS7001Q7DI2	PVS-7 QS MG TAN – Gen 2+ "Quick Silver" White Phosphor 47-54 lp/mm, Manual Gain!
NAMPVS700133DB2	PVS-7 3 Bravo TAN – Gen 3, 57 lp/mm (min) - 64 lp/mm (typical)
NAMPVS700137DB2	PVS-7 3 Bravo MG TAN – Gen 3, 57 lp/mm (min) - 64 lp/mm (typical), Manual Gain
NAMPVS700133DA2	PVS-7 3 Alpha TAN – Gen 3 High Performance 64-72 lp/mm
NAMPVS7001G7DA2	PVS-7 Ghost MG TAN – Gen 3 "Ghost" White Phosphor 47-57 lp/mm, Manual Gain!
NAMPVS7001P3DA2	PVS-7 3P TAN – Gen 3 High Performance ITT 64-72 lp/mm PINNACLE® Thin-Filmed Auto-Gated IIT
PRODUCTS FOR INTERNATIONAL MARKET *	
NAMPVS7001GMEA1	PVS-7 Ghost E MG – Gen 3 "Ghost" White Phosphor FOM 1400, Manual Gain
NAMPVS700133EA1	PVS-7 3E – Gen 3 High Performance FOM 1400
NAMPVS700133NA1	PVS-7 3N – Gen 3 High Performance FOM 1600
ACCESSORIES	
ANHM000005	MICH Helmet Mount Assembly USA #107
ANHM000006	PASGT Helmet Mount Assembly USA #108
ANAF3X0003	3x A-Focal Mil-Spec Lens #99
ANAF5X0001	5x A-Focal Mil-Spec Lens #100
ANAF3X000P	3x A-Focal Lens #22 with Adapter #24/#25
ANAF5X000P	5x A-Focal Lens with Adapter #24/#25
ANKI000009	Magnetic Compass #110
ANKIW00118	IR850W Wide Angle Adjustable X-Long Range IR Illuminator w/Adapter # 118
ANHCO00001	Hard Shipping/Storage Case (F100) #101

* State Department export license is required. Please check export regulations on Page 59



NYX-7 PRO

Night Vision Goggle



The Armasight Nyx-7 PRO is an extremely rugged but compact bi-ocular night vision goggle. Built with the highest-grade optics and simple, reliable electronics, the Nyx-7 PRO provides clear, bright nighttime images under even the most trying conditions. For hands-free use, it can be worn on the included flip-up head mount or optional universal helmet mount, both of which have a built-in mechanism that will automatically turn the unit off when it is flipped up. The Armasight NYX-7 PRO can be equipped with high-performance Gen 2+ or Gen 3 image tubes. The dismounted goggle can also be utilized as an excellent long-range viewer with optional 3x afocal, 5x, and 8x magnifier lenses.

Waterproof, rugged, lightweight, and compact, the Armasight Nyx-7 PRO is the perfect hands-free unit for users ranging from the casual civilian to the most demanding military and law enforcement professionals.

- Ⓐ **Compact and lightweight, rugged design**
- Ⓐ **Head or helmet-mountable for hands-free usage**
- Ⓐ **Ergonomic, simple, easy to operate controls**
- Ⓐ **Utilizes single CR123A lithium battery or AA Alkaline, adapter included**
- Ⓐ **Built-in Infrared illuminators and flood lens**
- Ⓐ **Limited two-year warranty**



Magnification	1X
Lens system	27mm F/1.2
Field of view (°)	40
Dimensions (mm/in)	165 x 120 x 61 / 6.5 x 4.7 x 2.4
Weight (kg/lbs)	0.5 / 1.1

Part NO.	Name
PRODUCTS FOR US MARKET	
NSGNYX7P012MDI1	Nyx-7 PRO ID MG – Gen 2+ "Improved Definition" 47-54 lp/mm, Manual Gain
NSGNYX7P01QMDI1	Nyx-7 PRO QS MG – Gen 2+ "Quick Silver" White Phosphor 47-54 lp/mm, Manual Gain
NSGNYX7P0123DH1	Nyx-7 PRO HD – Gen 2+ "High Definition" 55-72 lp/mm
NSGNYX7P0137DB1	Nyx-7 PRO 3 Bravo MG – Gen 3, 57 lp/mm (min) - 64 lp/mm (typical), Manual Gain
NSGNYX7P0133DA1	Nyx-7 PRO 3 Alpha – Gen 3 High Performance 64-72 lp/mm
NSGNYX7P01GMDA1	Nyx-7 PRO Ghost MG – Gen 3 "Ghost" White Phosphor 47-57 lp/mm, Manual Gain
NSGNYX7P01P3DA1	Nyx-7 PRO 3P – Gen 3 High Performance ITT 64-72 lp/mm PINNACLE® Thin-Filmed Auto-Gated IIT
PRODUCTS FOR INTERNATIONAL MARKET *	
NSGNYX7P012MI1	Nyx-7 PRO IDi MG – Gen 2+ "Improved Definition", Manual Gain
NSGNYX7P01QMI1	Nyx-7 PRO QSi MG – Gen 2+ "Quick Silver" White Phosphor, Manual Gain
NSGNYX7P0123IH1	Nyx-7 PRO HDi – Gen 2+ "High Definition"
NSGNYX7P01GMEA1	Nyx-7 PRO Ghost E MG – Gen 3 "Ghost" White Phosphor FOM 1400, Manual Gain
NSGNYX7P0133EA1	Nyx-7 PRO 3E – Gen 3 High Performance FOM 1400
NSGNYX7P0133NA1	Nyx-7 PRO 3N – Gen 3 High Performance FOM 1600
ACCESSORIES	
ANHM000001	Helmet Mount #4
ANHM000009	Mil-Spec MICH Helmet Mount Kit USA #107 with Adapter/Swing Arm #59
ANHM000010	Mil-Spec PASGT Helmet Mount Kit USA #108 with Adapter/Swing Arm #59
ANAM000034	Transfer Adapter to PVS-7/PVS-14 Headset/Helmet #59
ANAF3X0002	3x A-Focal Lens #22
ANAF5X0002	5x A-Focal Lens
ANLE5X0007	5x Lens # 12 with Adapter #131/132
ANLE8X0006	8x Lens #16 with Adapter #131/132
ANKI000017	IR850 Long Range IR Illuminator w/Transfer Piece #21
ANKIW00017	IR850W Wide Angle Adjustable X-Long Range IR Illuminator w/Transfer Piece #21
ANHCO00001	Hard Shipping/Storage Case (F100) #101

* State Department export license is required. Please check export regulations on Page 59

N-15

Night Vision Goggle

The Armasight N-15 is a dual-channel night vision goggle system. The N-15 uses optics that are equal to or better than current Military night vision units, built into a tough, compact, and ergonomic composite housing. The Armasight N-15 can withstand saltwater, rain, high humidity, and temperature extremes, and still provide unsurpassed levels of performance.

For hands-free use, it can be worn on the included flip-up head mount or optional universal helmet mount, both of which have a built-in mechanism that will automatically turn the unit off when it is flipped up. The N-15 goggle is equipped with automatic brightness control, bright light shut-off circuitry, and a spot/flood built-in IR illuminator. The N-15 is equipped with LED indicators that are displayed on the screen of the eyepiece to alert the user of a low battery, or to indicate that the IR is turned on. The dismounted goggle can also be utilized as an excellent long-range viewer with an optional 3x afocal lens.

The Armasight N-15 utilizes two image intensifier tubes. This dual tube design provides increased depth perception and outstanding clarity. The Armasight N-15 can be equipped with high-performance Gen 2+ and Gen 3 IITs including Green phosphor, or Armasight's "Quick Silver" and "Ghost" IITs, which provide users with natural B&W night vision displays.

The Armasight N-15 is a high-standard night vision device that will meet the requirements of the most demanding law enforcement officer, military professional, or casual civilian user.

- Ⓐ **Compact and lightweight, rugged design**
- Ⓐ **True stereoscopic vision**
- Ⓐ **Head or helmet-mountable for hands-free operation**
- Ⓐ **Ergonomic, simple, easy to operate controls**
- Ⓐ **Built-in IR illuminator with flood lens**
- Ⓐ **Utilizes single CR123A lithium battery or AA Alkaline, adapter included**
- Ⓐ **Limited two-year warranty**

Magnification	1X
Lens system	27mm; F1.2
Field of view (°)	40
Dimensions (mm/in)	140 x 114 x 69 / 5.5 x 4.5 x 2.7
Weight (kg/oz)	0.7 / 1.5

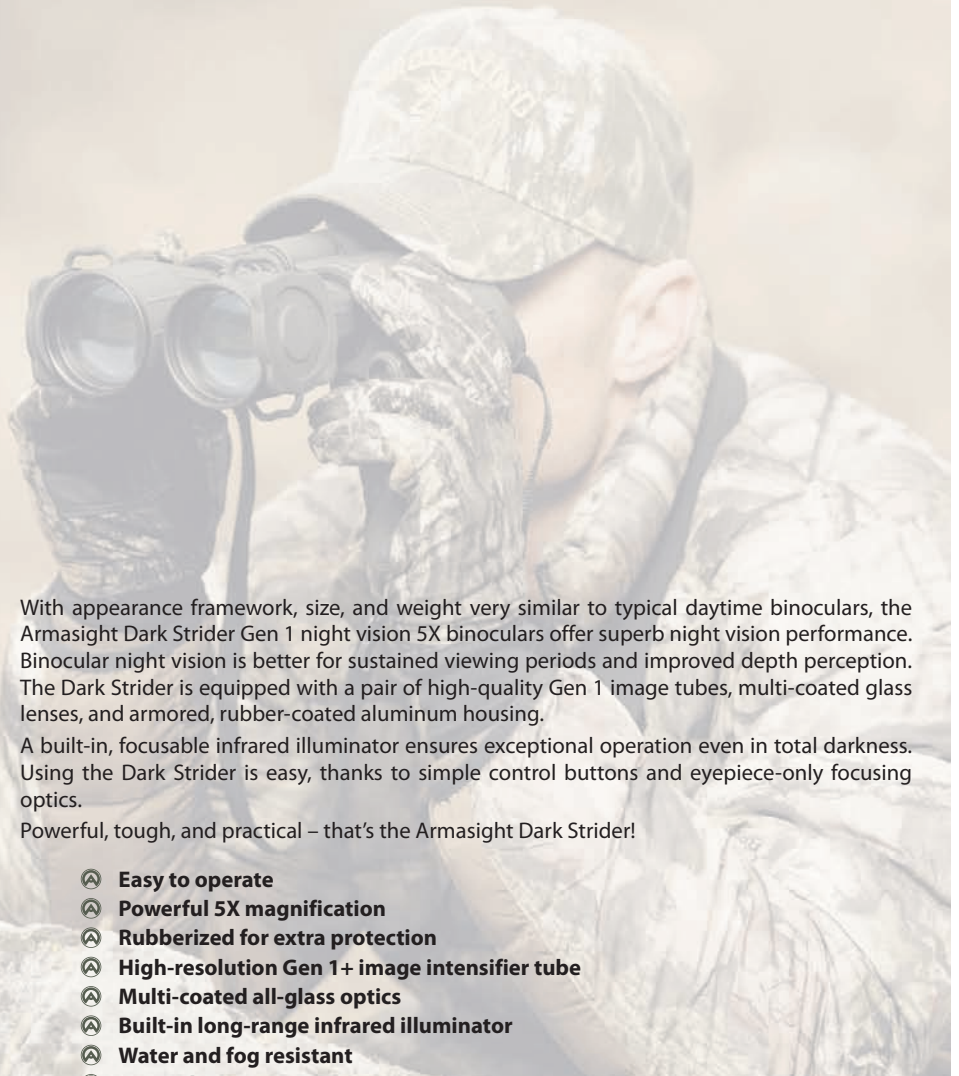
Part NO.	Name
PRODUCTS FOR US MARKET	
NSGN15000126DS1	N-15 SD – Gen 2+ "Standard Definition" 45-51 lp/mm
NSGN15000126DI1	N-15 ID – Gen 2+ "Improved Definition" 47-54 lp/mm
NSGN15000126DH1	N-15 HD – Gen 2+ "High Definition"
NSGN150001Q6DI1	N-15 QS – Compact Dual Tube Gen 2+ "Quick Silver" White Phosphor 47-54 lp/mm
NSGN15000136DAB1	N-15 3 Bravo – Gen 3, 57 lp/mm (min) - 64 lp/mm (typical)
NSGN15000136DA1	N-15 3 Alpha – Gen 3 High Performance 64-72 lp/mm
NSGN150001G6DA1	N-15 Ghost – Gen 3 "Ghost" White Phosphor 47-57 lp/mm
NSGN150001P6DA1	N-15 3P – Gen 3 High Performance IIT 64-72 lp/mm PINNACLE® Thin-Filmed Auto-Gated IIT
NSGN150001F6DA1	N-15 FLAG – "FLAG" Filmless Auto-Gated IIT (comparable to Gen 4) 64-72 lp/mm
PRODUCTS FOR INTERNATIONAL MARKET *	
NSGN15000126IS1	N15-SDi – Gen 2+ "Standard Definition"
NSGN15000126II1	N-15 IDi – Gen 2+ "Improved Definition"
NSGN15000126IH1	N-15 HDi – Gen 2+ "High Definition"
NSGN150001Q6II1	N-15 QSi – Gen 2+ "Quick Silver" White Phosphor
NSGN15000136EA1	N-15 3E – Gen 3 High Performance FOM 1400
NSGN15000136NA1	N-15 3N – Gen 3 High Performance FOM 1600
NSGN150001G6EA1	N-15 Ghost – Gen 3 "Ghost" White Phosphor FOM 1400
ACCESSORIES	
ANAF3X0N15	A-Focal 3x Lens Kit (includes 2 lenses)
ANHM000001	Helmet Mount #4
ANKIW00017	IR850W Wide Angle Adjustable X-Long Range IR Illuminator w/Transfer Piece #21
ANHC000001	Hard Shipping/Storage Case # 101 (F100)

* State Department export license is required. Please check export regulations on Page 59



DARK STRIDER

Night Vision Binocular



With appearance framework, size, and weight very similar to typical daytime binoculars, the Armasight Dark Strider Gen 1 night vision 5X binoculars offer superb night vision performance. Binocular night vision is better for sustained viewing periods and improved depth perception. The Dark Strider is equipped with a pair of high-quality Gen 1 image tubes, multi-coated glass lenses, and armored, rubber-coated aluminum housing.

A built-in, focusable infrared illuminator ensures exceptional operation even in total darkness. Using the Dark Strider is easy, thanks to simple control buttons and eyepiece-only focusing optics.

Powerful, tough, and practical – that’s the Armasight Dark Strider!

- Ⓐ **Easy to operate**
- Ⓐ **Powerful 5X magnification**
- Ⓐ **Rubberized for extra protection**
- Ⓐ **High-resolution Gen 1+ image intensifier tube**
- Ⓐ **Multi-coated all-glass optics**
- Ⓐ **Built-in long-range infrared illuminator**
- Ⓐ **Water and fog resistant**
- Ⓐ **Limited two-year warranty**

Magnification	5X
Lens system	80mm; F/1.7
Field of view (°)	14
Dimensions (mm/in)	225 x 150 x 60 / 8.9 x 5.9 x 2.3
Weight (kg/lbs)	1.4 / 3

Part NO.	Name
PRODUCT FOR US AND INTERNATIONAL MARKETS	
NKBDASTR151111	Dark Strider – Gen 1+
ACCESSORIES	
ANKI000023	IR810 Long Range IR Illuminator w/IRDS Adapter #115
ANKIW00023	IR810W Wide Angle Adjustable X-Long Range IR Illuminator w/IRDS Adapter #115

SPARK-B

Night Vision Binocular



The Armasight Spark-B is the night vision binocular with 4x magnification built around CORE (Ceramic Optical Ruggedized Engine) image intensifier tubes. Unlike Gen 1 Image intensifier tubes that are fragile because they are made from glass, CORE™ IITs are made just like Gen 2 and Gen 3, by fusing metal alloys with ceramic compounds. CORE™ technology is based on durable elements and allows tight component stacking, resulting in image tubes that are exceptionally shockproof and vibration resistant. Robust packaging protects easy-to-break protrusions common in Gen 1 tubes, and allows for a streamlined design that is lighter, more compact, and more reliable than typical night vision devices.

The CORE™ platform offers 'best in class' resolution with 60-70 lp/mm, and increased photocathode sensitivity levels of upwards of 400µA/lm, which provide image quality in challenging ambient light conditions that rivals high-end Gen 2 image tubes.

The Armasight Spark-B is a rugged and lightweight night vision binocular. Dual tube design provides increased depth perception and outstanding clarity. A built-in, focusable short-range IR illuminator allows the units to work well even in complete darkness, and an optional long-range infrared illuminator will dramatically boost the viewing range when you need it most.



- Ⓐ **High-resolution CORE image intensifier tube**
- Ⓐ **4x magnification**
- Ⓐ **Multi-coated all-glass optics**
- Ⓐ **Compact, rugged design**
- Ⓐ **Rubberized for extra protection**
- Ⓐ **Ergonomic, simple, easy to operate controls**
- Ⓐ **Utilizes single CR123A lithium battery**
- Ⓐ **Built-in Infrared illuminator**
- Ⓐ **Water and fog-resistant**
- Ⓐ **Limited two-year warranty**

Magnification	4X
Lens system	80mm; F/1.7
Field of view (°)	14
Dimensions (mm/in)	220 x 147 x 63 / 8.7 x 5.8 x 2.5
Weight (kg/lbs)	1.33 / 2.93

Part NO.	Name
PRODUCT FOR US AND INTERNATIONAL MARKETS	
NSBSPARKB4CCIC1	Spark-B – "CORE" IIT, 60-70 lp/mm
ACCESSORIES	
ANKIW00016	IR810W Wide Angle Adjustable X-Long Range IR Illuminator w/Transfer Piece #21





DISCOVERY

Night Vision Bi-Oculars



The Armasight Discovery is the ultimate long-range night vision observation device.

Providing enhanced performance and a highly ergonomic body, the Discovery enables users to view long distances comfortably for extended periods of time. The Discovery is the perfect tool for perimeter security, observing nature, and performing long-range surveillance.

Equipped with brand new, high-performance image intensifier tubes, our Discovery Binoculars can be hand-held or mounted onto a tripod. The Armasight Discovery can be equipped with high-performance Gen 2+ and Gen 3 IITs, including Green phosphor or Armasight's "Quick Silver" and "Ghost" IITs, which provide users with natural B&W night vision displays. The Armasight Discovery is equipped with Automatic Brightness Control (ABC), which automatically adjusts the brightness of the image tube to achieve the highest quality image resolution under varying light conditions.

Available in 3X, 5X, or 8X models, the Discovery is fitted with an on-board IR illuminator and advanced electronic protection circuits. With a rugged body that is both water and shock resistant, but still lightweight, the Armasight Discovery is the ideal choice for hunting, wildlife observation, law enforcement, and defense applications.

- Ⓐ **Rugged, lightweight and versatile design**
- Ⓐ **3x, 5x, or 8x magnification**
- Ⓐ **Fast, multi-coated, all-glass optics**
- Ⓐ **Dual eye viewing system for comfortable, extended nighttime viewing sessions**
- Ⓐ **Detachable long-range infrared illuminator**
- Ⓐ **Water and fog resistant**
- Ⓐ **Tripod-mountable**
- Ⓐ **Hand straps and neck strap for comfortable use**
- Ⓐ **Limited two-year warranty**

Model	Discovery 3X	Discovery 5X	Discovery 8X
Magnification	3X	5X	8X
Lens system	80mm F/1.65	108mm F/1.5	160mm F/2.0
Field of view (°)	12.5	9.5	6.5
Dimensions (mm/in)	265 x 140 x 63 / 10.4 x 5.5 x 2.5	305 x 140 x 86 / 12.0 x 5.5 x 3.4	350 x 140 x 100 / 13.8 x 5.5 x 3.9
Weight (kg/lbs)	1.0 / 2.2	1.3 / 2.8	1.5 / 3.3

Part NO.	Name
PRODUCTS FOR US MARKET	
NSBDISCOV32GDS1	Discovery 3X SD – Gen 2+ "Standard Definition" 45-51 lp/mm
NSBDISCOV32GDI1	Discovery 3X ID – Gen 2+ "Improved Definition" 47-54 lp/mm
NSBDISCOV32QGDI1	Discovery 3X QS – Gen 2+ "Quick Silver" White Phosphor 47-54 lp/mm
NSBDISCOV323DH1	Discovery 3X HD – Gen 2+ "High Definition" 55-72 lp/mm
NSBDISCOV333DB1	Discovery 3X 3 Bravo – Gen 3, 57 lp/mm (min) - 64 lp/mm (typical)
NSBDISCOV333DA1	Discovery 3X 3 Alpha – Gen 3 High Performance 64-72 lp/mm
NSBDISCOV3GGDA1	Discovery 3X Ghost – Gen 3 "Ghost" White Phosphor 47-57 lp/mm
NSBDISCOV3P3DA1	Discovery 3X 3P – Gen 3 High Performance ITT 64-72 lp/mm PINNACLE® Thin-Filmed Auto-Gated IIT
NSBDISCOV52GDS1	Discovery 5X SD – Gen 2+ "Standard Definition"
NSBDISCOV52GDI1	Discovery 5X ID – Gen 2+ "Improved Definition" 47-54 lp/mm
NSBDISCOV52QGDI1	Discovery 5X QS – Gen 2+ "Quick Silver" White Phosphor 47-54 lp/mm
NSBDISCOV523DH1	Discovery 5X HD – Gen 2+ "High Definition" 55-72 lp/mm
NSBDISCOV533DB1	Discovery 5X 3 Bravo – Gen 3, 57 lp/mm (min) - 64 lp/mm (typical)
NSBDISCOV533DA1	Discovery 5X 3 Alpha – Gen 3 High Performance 64-72 lp/mm
NSBDISCOV5GGDA1	Discovery 5X Ghost – Gen 3 "Ghost" White Phosphor 47-57 lp/mm
NSBDISCOV5P3DA1	Discovery 5X 3P – Gen 3 High Performance ITT 64-72 lp/mm PINNACLE® Thin-Filmed Auto-Gated IIT
NSBDISCOV82GDS1	Discovery 8X SD – Gen 2+ "Standard Definition" 45-51 lp/mm
NSBDISCOV82GDI1	Discovery 8X ID – Gen 2+ "Improved Definition" 47-54 lp/mm
NSBDISCOV82QGDI1	Discovery 8X QS – Gen 2+ "Quick Silver" White Phosphor 47-54 lp/mm
NSBDISCOV823DH1	Discovery 8X HD – Gen 2+ "High Definition" 55-72 lp/mm
NSBDISCOV833DB1	Discovery 8X 3 Bravo – Gen 3, 57 lp/mm (min) - 64 lp/mm (typical)
NSBDISCOV833DA1	Discovery 8X 3 Alpha – Gen 3 High Performance 64-72 lp/mm
NSBDISCOV8GGDA1	Discovery 8X Ghost – Gen 3 "Ghost" White Phosphor 47-57 lp/mm
NSBDISCOV8P3DA1	Discovery 8X 3P – Gen 3 High Performance ITT 64-72 lp/mm PINNACLE® Thin-Filmed Auto-Gated IIT
PRODUCTS FOR INTERNATIONAL MARKET *	
NSBDISCOV32GIS1	Discovery 3X SDi – Gen 2+ "Standard Definition"
NSBDISCOV32GI1	Discovery 3X IDi – Gen 2+ "Improved Definition"
NSBDISCOV32QGI1	Discovery 3X QSi – Gen 2+ "Quick Silver" White Phosphor
NSBDISCOV323IH1	Discovery 3X HDi – Gen 2+ "High Definition"
NSBDISCOV3GGEA1	Discovery 3X Ghost E – Gen 3 "Ghost" White Phosphor FOM 1400
NSBDISCOV333EA1	Discovery 3X 3E – Gen 3 High Performance FOM 1400
NSBDISCOV333NA1	Discovery 3X 3N – Gen 3 High Performance FOM 1600
NSBDISCOV52GIS1	Discovery 5X SDi – Gen 2+ "Standard Definition"
NSBDISCOV52GI1	Discovery 5X IDi – Gen 2+ Improved Definition"
NSBDISCOV52QGI1	Discovery 5X QSi – Gen 2+ "Quick Silver" White Phosphor
NSBDISCOV523IH1	Discovery 5X HDi – Gen 2+ "High Definition"
NSBDISCOV5GGEA1	Discovery 5X Ghost E – Gen 3 "Ghost" White Phosphor FOM 1400
NSBDISCOV533EA1	Discovery 5X 3E – Gen 3 High Performance FOM 1400
NSBDISCOV533NA1	Discovery 5X 3N – Gen 3 High Performance FOM 1600
NSBDISCOV82GIS1	Discovery 8X SDi – Gen 2+ "Standard Definition" FOM
NSBDISCOV82GI1	Discovery 8X IDi – Gen 2+ "Improved Definition" FOM
NSBDISCOV82QGI1	Discovery 8X QSi – Gen 2+ "Quick Silver" White Phosphor FOM
NSBDISCOV823IH1	Discovery 8X HDi – Gen 2+ "High Definition"
NSBDISCOV8GGEA1	Discovery 8X Ghost E – Gen 3 "Ghost" White Phosphor FOM 1400
NSBDISCOV833EA1	Discovery 8X 3E – Gen 3 High Performance FOM 1400
NSBDISCOV833NA1	Discovery 8X 3N – Gen 3 High Performance FOM 1600
ACCESSORIES	
ANAM000006	Universal Camera Adapter #45
IAIR850IR000002	IR850W Wide Angle Adjustable X-Long Range IR Illuminator
ANHC000001	Hard Shipping/Storage Case # 101 (F100)

* State Department export license is required. Please check export regulations on Page 59





EAGLE

Night Vision Binocular



The Armasight Eagle is a high-tech, tough, and durable night vision binocular that delivers great performance, but at the lowest possible cost. Packed with features, the Eagle is a unit that is equally at home with the hunter as it is with the professional security officer or law enforcement professional.

Despite its low cost, the Eagle features manual brightness control, bright light shut-off circuitry, and a built-in IR illuminator. The Armasight Eagle can be equipped with high-performance Green phosphor Gen 2+ IITs, or Armasight's Gen 2+ "Quick Silver" and Gen 3 "Ghost" IITs, which provides users with natural B&W night vision displays.

The Armasight Eagle is a night vision workhorse that will satisfy the requirements and expectations of the most demanding professionals and casual night vision users.

- Ⓐ **3.5x magnification**
- Ⓐ **Redundant dual-tube design**
- Ⓐ **Auto-brightness control**
- Ⓐ **Bright light cut-off**
- Ⓐ **Ergonomic, simple, easy to operate controls**
- Ⓐ **Waterproof**
- Ⓐ **Utilizes single CR123A lithium battery or AA Alkaline, adapter included**
- Ⓐ **Adaptable for use with cameras**
- Ⓐ **Built-in Infrared illuminator**
- Ⓐ **Time Tracker System available for measuring hours of operation (optional)**
- Ⓐ **Limited two-year warranty**

Magnification	3.5X
Lens system	80mm; F/1.6
Field of view (°)	12
Dimensions (mm/in)	235 x 120 x 75 / 9.2 x 4.7 x 2.9
Weight (kg/lbs)	1.52 / 3.3

Part NO.	Name
PRODUCTS FOR US MARKET	
NSBEAGLE032GDS1	Eagle SD – Gen 2+ "Standard Definition" 45-51 lp/mm
NSBEAGLE032GDI1	Eagle ID – Gen 2+ "Improved Definition" 47-54 lp/mm
NSBEAGLE03QGDI1	Eagle QS – Gen 2+ "Quick Silver" White Phosphor 47-54 lp/mm
NSBEAGLE03GGDA1	Eagle Ghost – Gen 3 "Ghost" White Phosphor 47-57 lp/mm
PRODUCTS FOR INTERNATIONAL MARKET *	
NSBEAGLE032GIS1	Eagle SDi – Gen 2+ "Standard Definition"
NSBEAGLE032GII1	Eagle IDi – Gen 2+ "Improved Definition"
NSBEAGLE03QGII1	Eagle QSi – Gen 2+ "Quick Silver" White Phosphor
NSBEAGLE0GGEA1	Eagle Ghost E – Gen 3 "Ghost" White Phosphor FOM 1400
ACCESSORIES	
ANKIW00017	IR850W Wide Angle Adjustable X-Long Range IR Illuminator w/Transfer Piece #21
ANHC00001	Hard Shipping/Storage Case # 101 (F100)

* State Department export license is required. Please check export regulations on Page 59

ORION WWZ

Night Vision Weapon Sights



Our line of Armasight Gen 1 night vision riflescopes is a collection of high-performance, mid-range night vision weapon sights that provide excellent observational, target acquisition, and aiming capabilities for the most demanding sports shooters, hunters, and security personnel.

Armasight night vision sights are arguably the most dependable, highest-performing weapon sights you can find in the Gen 1+ category. We have housed our top class optics and image intensifier tubes within ruggedly designed aluminum bodies.

Armasight Orion riflescopes are equipped with armored, rubber-coated housing. For improved accuracy and ergonomics, all Orion series scopes feature precision top wheel focus.

Our riflescopes are the best solution for any tactical shooter or hunter seeking to improve the accuracy of their shooting in dark environments.



- Ⓐ **3x, 4x or 5x magnification**
- Ⓐ **Shock-protected optics**
- Ⓐ **Illuminated red cross reticle**
- Ⓐ **Simple, easy to operate controls and adjustments**
- Ⓐ **Water-resistant design**
- Ⓐ **Rubberized body (Orion series)**
- Ⓐ **Ability to mount to standard Weaver rails**
- Ⓐ **Variable reticle brightness**
- Ⓐ **Detachable, long-range infrared illuminator**
- Ⓐ **Limited two-year warranty**

Model	ORION 3X	ORION 4X	ORION 5X	WWZ
Magnification	3X	4X	5X	4X
Lens system	85mm; F/1.4	90mm; F/1.4	108mm; F/1.6	90mm; F/1.4
Field of view (°)	15	12	10	12
Dimensions (mm/in)	323 x 83 x 108 / 12.7 x 3.2 x 4.2	323 x 98 x 115 / 12.7 x 3.8 x 4.5	323 x 104 x 118 / 12.7 x 4.1 x 4.6	323 x 98 x 115 / 12.7 x 3.8 x 4.5
Weight (kg/lbs)	1.4 / 3.0	1.5 / 3.2	1.7 / 3.7	1.45 / 3.2

Part NO.	Name
PRODUCTS FOR US AND INTERNATIONAL MARKETS	
NWWORION0311111	ORION 3X – Gen 1+
NWWORION0411111	ORION 4X – Gen 1+
NWWORION0511111	ORION 5X – Gen 1+
NWWWZ000411111	WWZ – Gen 1+
ACCESSORIES	
IAIR810IR000002	IR810W Wide Angle Adjustable X-Long Range Infrared Illuminator
ANHC000004	Hard Shipping/Storage Case (F200) #102





VAMPIRE

Night Vision Weapon Sight



The Armasight Vampire is built using our new, proprietary CORE (Ceramic Optical Ruggedized Engine) image tube, which includes double the resolution of Gen 1 devices. This provides flatter, clearer night vision images. The CORE™ platform offers 'best in class' resolution with 60-70 lp/mm, and increased photocathode sensitivity levels of upwards of 400µA/lm, providing image quality that rivals that of high-end Gen 2 image tubes, even in challenging ambient light conditions.

The body of the unit is made from solid aluminum; the O-ring is sealed and rubber coated for further protection. Like all Armasight scopes, the Vampire is nitrogen-treated and comes complete with batteries, a soft carrying case, a user manual, and all necessary hardware for solid mounting to a standard 7/8" Picatinny or Weaver-style rail.

The Vampire has multicoated all-glass lenses and a manually-adjustable fine reticle that makes precise shot placement incredibly easy. This night vision riflescope is also water, dust, and sand-proof for increased reliability. Complete with tactical rails for lasers or illuminators (the high-power IR illuminator is included standard), the Armasight Vampire is ideal for the predator hunter, tactical marksmen, or anyone looking for a compact, sturdy, lightweight night vision riflescope.

- Ⓐ **CORE Technology**
- Ⓐ **Shock protected, all-glass IR transmission multicoated optics**
- Ⓐ **Illuminated reticle with brightness adjustment**
- Ⓐ **Detachable long-range infrared illuminator**
- Ⓐ **Water and fog resistant design**
- Ⓐ **Low battery indicator**
- Ⓐ **Quick-release mount**
- Ⓐ **Mounts to standard Weaver rails**
- Ⓐ **Water and fog-resistant**
- Ⓐ **Limited two-year warranty**

Magnification	3X
Lens system	108mm F/1.5
Field of view (°)	10.5
Dimensions (mm/in)	275 x 87 x 95 / 10.8 x 3.4 x 3.7
Weight (kg/lbs)	1.36 / 3

Part NO.	Name
PRODUCTS FOR US AND INTERNATIONAL MARKETS	
NMWVAMPIR3CCIC1	Vampire 3x - "CORE" IIT, 60-70 lp/mm
ACCESSORIES	
IAIR810IR000002	IR810W Wide Angle Adjustable X-Long Range IR Illuminator
ANAM000045	Extended Rail Adapter #85
ANHCO00004	Hard Shipping/Storage Case (F200) #102

SPEAR

Night Vision Weapon Sight



The Armasight Spear is a high-tech, tough, and durable night vision riflescope that delivers great performance at the lowest possible cost. Featuring a high-quality Gen 2+ image intensifier tube, an adjustable, illuminated reticle, easy to use internal windage and elevation adjustments, and simple controls, the Armasight Spear will allow you to see beyond the expected in nighttime conditions.

The Armasight Spear riflescope is equipped with an armored, rubber-coated housing made from aircraft aluminum. The Spear is fitted with a double-lever quick-release mount that allows for highly accurate rail positioning, ensuring user comfort. For improved accuracy and ergonomics, the Spear features precision top wheel focus. A high-powered, long-range IR illuminator is included for long-range use.

Water-resistant, robust, and lightweight, the Armasight Spear is the perfect night vision riflescope for hunters and tactical marksmen.

- Ⓐ **4X magnification**
- Ⓐ **Shock protected, all-glass IR transmission multicoated optics**
- Ⓐ **Rubberized body**
- Ⓐ **Illuminated reticle with brightness adjustment**
- Ⓐ **Detachable long-range infrared illuminator**
- Ⓐ **Water and fog resistant design**
- Ⓐ **Quick-release mount**
- Ⓐ **Mounts to standard Weaver rails**
- Ⓐ **Water and fog-resistant**
- Ⓐ **Limited two-year warranty**



Magnification	4X
Lens system	108mm F/1.5
Field of view (°)	10
Dimensions (mm/in)	295 x 100 x 100 / 11.6 x 3.9 x 3.9
Weight (kg/lbs)	1.5 / 3.4

Part NO.	Name
PRODUCTS FOR US MARKET	
NWWSPEAR042GDS1	Spear 4x SD – Gen 2+ "Standard Definition" 45-51 lp/mm
NWWSPEAR042GDI1	Spear 4x ID – Gen 2+ "Improved Definition" 47-54 lp/mm
PRODUCTS FOR INTERNATIONAL MARKET *	
NWWSPEAR042GIS1	Spear 4x SDi – Gen 2+ "Standard Definition"
NWWSPEAR042GII1	Spear 4x IDi – Gen 2+ "Improved Definition"
ACCESSORIES	
ANHC000004	Hard Shipping/Storage Case (F200) #102
IAIR850IR000002	IR850W Wide Angle Adjustable Long Range IR Illuminator

* State Department export license is required. Please check export regulations on Page 59



VULCAN

Night Vision Weapon Sights



Armasight Vulcan scopes represent the apex of night vision weapon sight technology. They include image intensifier options that include Gen 2+ White phosphor Quick Silver, Gen 3 white phosphor Ghost, and mil-spec Gen 3 Pinnacle. Our new optical design sets the industry standard, and these devices are significantly more compact than before.

The Vulcan comes with a 2X magnifier and a host of other features, including wireless remote control, the ability to use either a CR123A or AA battery, and a quick-release Picatinny mount with locks. Small in size, but big on value, the Armasight Vulcan will not unbalance your rifle; it can be secured to an adjustable mount that fits Weaver or Picatinny rails, and can be mounted in seconds without tools.

The Vulcan has multicoated all-glass lenses and an internally adjustable fine reticle that makes precise shot placement incredibly easy. This night vision riflescope is also water, dust and sand proof for increased reliability. Complete with tactical rails for lasers or illuminators (high power IR illuminator included as standard), the Armasight Vulcan is ideal for the predator hunter, tactical marksmen, or anyone that needs a compact and light night vision riflescope.

- Ⓐ **Wide array of IIT configurations**
- Ⓐ **Shock protected, all-glass IR transmission multicoated optics**
- Ⓐ **Bright light cut-off**
- Ⓐ **Illuminated reticle with brightness adjustment**
- Ⓐ **2x magnifier is included (Vulcan 2.5x-5x and Vulcan 3.5x-7x)**
- Ⓐ **Variable gain control (optional)**
- Ⓐ **Wireless remote control included**
- Ⓐ **Detachable long-range infrared illuminator**
- Ⓐ **Waterproof design**
- Ⓐ **Powered by a single CR123A Lithium or AA battery**
- Ⓐ **Low battery indicator**
- Ⓐ **Quick-release mount**
- Ⓐ **Mounts to standard Weaver rails**
- Ⓐ **Limited Two-Year Warranty**

Model	VULCAN 2.5-5X	VULCAN 3.5-7X	VULCAN 4.5X
Magnification	2.5X / 5X	3.7X / 7X	4.5X
Lens System	F1.35, F60 mm	F1.67, F80 mm	F1.54, F108 mm
Field of view (°)	16	12	9
Dimensions (mm/in)	239 x 97 x 71 / 9.4 x 3.8 x 2.8	250 x 97 x 71 / 9.8 x 3.8 x 2.8	219 x 99 x 81 / 8.6 x 3.9 x 3.2
Weight (kg/lbs)	0.8 / 1.7	0.9 / 2	0.97 / 2.1

Part NO.	Name
PRODUCTS FOR US MARKET	
NRWVULCAN226DS1	Vulcan 2.5-5X SD – Gen 2+ "Standard Definition" 45-51 lp/mm
NRWVULCAN226DI1	Vulcan 2.5-5X ID – Gen 2+ "Improved Definition" 47-54 lp/mm
NRWVULCAN226DH1	Vulcan 2.5-5X HD – Gen 2+ "High Definition" 55-72 lp/mm
NRWVULCAN2Q9DI1	Vulcan 2.5-5X QS MG – Gen 2+ "Quick Silver" White Phosphor 47-54 lp/mm, Manual Gain
NRWVULCAN239DB1	Vulcan 2.5-5X 3 Bravo MG – Gen 3, 57 lp/mm (min) - 64 lp/mm (typical), Manual Gain
NRWVULCAN239DA1	Vulcan 2.5-5X 3 Alpha MG – Gen 3 High Performance 64-72 lp/mm, Manual Gain
NRWVULCAN2G9DA1	Vulcan 2.5-5X Ghost MG – Gen 3 "Ghost" White Phosphor 47-57 lp/mm, Manual Gain
NRWVULCAN2P9DA1	Vulcan 2.5-5X 3P MG – Gen 3 High Performance ITT 64-72 lp/mm PINNACLE® Thin-Filmed Auto-Gated IIT, Manual Gain
NRWVULCAN2F9DA1	Vulcan 2.5-5X FLAG MG – "FLAG" Filmless Auto-Gated IIT (comparable to Gen 4) 64-72 lp/mm, Manual Gain
NRWVULCAN326DS1	Vulcan 3.5-7X SD – Gen 2+ "Standard Definition" 45-51 lp/mm
NRWVULCAN326DI1	Vulcan 3.5-7X ID – Gen 2+ "Improved Definition" 47-54 lp/mm
NRWVULCAN326DH1	Vulcan 3.5-7X HD – Gen 2+ "High Definition" 55-72 lp/mm
NRWVULCAN3Q9DI1	Vulcan 3.5-7X QS MG – Gen 2+ "Quick Silver" White Phosphor 47-54 lp/mm, Manual Gain
NRWVULCAN339DB1	Vulcan 3.5-7X 3 Bravo MG – Gen 3, 57 lp/mm (min) - 64 lp/mm (typical), Manual Gain
NRWVULCAN339DA1	Vulcan 3.5-7X 3 Alpha MG – Gen 3 High Performance 64-72 lp/mm, Manual Gain
NRWVULCAN3G9DA1	Vulcan 3.5-7X Ghost MG – Gen 3 "Ghost" White Phosphor 47-57 lp/mm, Manual Gain
NRWVULCAN3P9DA1	Vulcan 3.5-7X 3P MG – Gen 3 High Performance ITT 64-72 lp/mm PINNACLE® Thin-Filmed Auto-Gated IIT, Manual Gain
NRWVULCAN3F9DA1	Vulcan 3.5-7X FLAG MG – "FLAG" Filmless Auto-Gated IIT (comparable to Gen 4) 64-72 lp/mm, Manual Gain
NRWVULCAN426DS1	Vulcan 4.5x SD – Gen 2+ "Standard Definition" 45-51 lp/mm
NRWVULCAN426DI1	Vulcan 4.5X ID – Gen 2+ "Improved Definition" 47-54 lp/mm
NRWVULCAN426DH1	Vulcan 4.5X HD – Gen 2+ "High Definition" 55-72 lp/mm
NRWVULCAN4Q9DI1	Vulcan 4.5X QS MG – Gen 2+ "Quick Silver" White Phosphor 47-54 lp/mm, Manual Gain
NRWVULCAN439DB1	Vulcan 4.5X 3 Bravo MG – Gen 3, 57 lp/mm (min) - 64 lp/mm (typical), Manual Gain
NRWVULCAN439DA1	Vulcan 4.5X 3 Alpha MG – Gen 3 High Performance 64-72 lp/mm, Manual Gain
NRWVULCAN4G9DA1	Vulcan 4.5X Ghost MG – Gen 3 "Ghost" White Phosphor 47-57 lp/mm, Manual Gain
NRWVULCAN4P9DA1	Vulcan 4.5X 3P MG – Gen 3 High Performance ITT 64-72 lp/mm PINNACLE® Thin-Filmed Auto-Gated IIT, Manual Gain
NRWVULCAN4F9DA1	Vulcan 4.5X FLAG MG – "FLAG" Filmless Auto-Gated IIT (comparable to Gen 4) 64-72 lp/mm, Manual Gain
PRODUCTS FOR INTERNATIONAL MARKET *	
NRWVULCAN226IS1	Vulcan 2.5-5X SDi – Gen 2+ "Standard Definition"
NRWVULCAN229I1	Vulcan 2.5-5X IDi MG – Gen 2+ "Improved Definition" , Manual Gain
NRWVULCAN2Q9I1	Vulcan 2.5-5X QSi MG – Gen 2+ "Quick Silver" White Phosphor, Manual Gain
NRWVULCAN226IH1	Vulcan 2.5-5X HDi – Gen 2+ "High Definition"
NRWVULCAN2G9EA1	Vulcan 2.5-5X Ghost E MG – Gen 3 "Ghost" White Phosphor FOM 1400, Manual Gain
NRWVULCAN239EA1	Vulcan 2.5-5X 3E MG – Gen 3 High Performance FOM 1400, Manual Gain
NRWVULCAN239NA1	Vulcan 2.5-5X 3N MG – Gen 3 High Performance FOM 1600, Manual Gain
NRWVULCAN326IS1	Vulcan 3.5-7X SDi – Gen 2+ "Standard Definition"
NRWVULCAN329I1	Vulcan 3.5-7X IDi MG – Gen 2+ "Improved Definition", Manual Gain
NRWVULCAN3Q9I1	Vulcan 3.5-7X QSi MG – Gen 2+ "Quick Silver" White Phosphor, Manual Gain
NRWVULCAN326IH1	Vulcan 3.5-7X HDi – Gen 2+ "High Definition"
NRWVULCAN3G9EA1	Vulcan 3.5-7X Ghost E MG – Gen 3 "Ghost" White Phosphor FOM 1400, Manual Gain
NRWVULCAN339EA1	Vulcan 3.5-7X 3E MG – Gen 3 High Performance FOM 1400, Manual Gain
NRWVULCAN339NA1	Vulcan 3.5-7X 3N MG – Gen 3 High Performance FOM 1600, Manual Gain
NRWVULCAN426IS1	Vulcan 4.5x SDi – Gen 2+ "Standard Definition"
NRWVULCAN429I1	Vulcan 4.5x IDi MG – Gen 2+ "Improved Definition", Manual Gain
NRWVULCAN4Q9I1	Vulcan 4.5X QSi MG – Gen 2+ "Quick Silver" White Phosphor, Manual Gain
NRWVULCAN426IH1	Vulcan 4.5X HDi – Gen 2+ "High Definition"
NRWVULCAN439EA1	Vulcan 4.5X 3E MG – Gen 3 High Performance FOM 1400, Manual Gain
NRWVULCAN439NA1	Vulcan 4.5X 3N MG – Gen 3 High Performance FOM 1600, Manual Gain
NRWVULCAN4G9EA1	Vulcan 4.5X Ghost E MG – Gen 3 "Ghost" White Phosphor FOM 1400, Manual Gain
ACCESSORIES	
IAIR850IR000002	IR850W Wide Angle Adjustable Long Range IR Illuminator
ANAM000045	Extended Rail Adapter #85
ANH000004	Hard Shipping/Storage Case (F200) #102

* State Department export license is required. Please check export regulations on Page 59





NEMESIS

Night Vision Weapon Sights

The Armasight Nemesis is the perfect solution for missions where the shooter requires additional distance between themselves and their target. Featuring a high-quality image intensifier tube, easy to use internal windage and elevation adjustments, and simple push button controls, the Armasight Nemesis will allow you to see beyond the expected in nighttime conditions. The Armasight Nemesis can be equipped with high-performance Green phosphor Gen 2+ IITs, or Armasight's Gen 2 "Quick Silver" and Gen 3 "Ghost" IITs, which provides users with natural B&W night vision displays.

The adjustable illuminated reticle is unique; no other night vision riflescope on the market has such well-defined (yet extremely thin) crosshairs that allow for this level of precise shot placement, even on exceptionally small targets. The Nemesis is fitted with a Picatinny/Weaver mount that allows for highly accurate rail positioning, ensuring user comfort; three accessory mounting rails allow easy mounting of our included long-range IR illuminator and/or other compatible accessories. The Nemesis is water resistant, robust, lightweight, and engineered from aircraft aluminum.

- Ⓐ Shock-protected, all-glass IR transmission multicoated optics
- Ⓐ Bright source protection, Automatic Brightness Control (ABC)
- Ⓐ Illuminated, center red cross reticle for optimal contrast
- Ⓐ Controls and adjustments are simple and easy to operate
- Ⓐ Water resistant design
- Ⓐ Flip-up back-up iron sights
- Ⓐ Mounts to standard Weaver rails
- Ⓐ Variable reticle brightness
- Ⓐ Detachable infrared illuminator
- Ⓐ Limited two-year warranty



Model	Nemesis 4X	Nemesis 6X
Magnification	4X	6X
Lens System	108 mm; F/1.5	160 mm; F/2.0
Field of view (°)	10	6.5
Dimensions (mm/in)	305 x 102 x 71 / 12 x 4 x 2.8	388 x 102 x 71 / 15.3 x 4 x 2.8
Weight (kg/lbs)	1.2 / 2.7	1.9 / 4.2

Part NO.	Name
PRODUCTS FOR US MARKET	
NRWNEMESI42GDS1	Nemesis 4X SD – Gen 2+ "Standard Definition" 45-51 lp/mm
NRWNEMESI42GDI1	Nemesis 4X ID – Gen 2+ "Improved Definition" 47-54 lp/mm
NRWNEMESI4QGD11	Nemesis 4X QS – Gen 2+ "Quick Silver" White Phosphor 47-54 lp/mm
NRWNEMESI4GGDA1	Nemesis 4X Ghost – Gen 3 "Ghost" White Phosphor 47-57 lp/mm
NRWNEMESI62GDS1	Nemesis 6X SD – Gen 2+ "Standard Definition" 45-51 lp/mm
NRWNEMESI62GDI1	Nemesis 6X ID – Gen 2+ "Improved Definition" 47-54 lp/mm
NRWNEMESI6QGD11	Nemesis 6X QS – Gen 2+ "Quick Silver" White Phosphor 47-54 lp/mm
NRWNEMESI6GGDA1	Nemesis 6X Ghost – Gen 3 "Ghost" White Phosphor 47-57 lp/mm
PRODUCTS FOR INTERNATIONAL MARKET *	
NRWNEMESI42GIS1	Nemesis 4X SDi – Gen 2+ "Standard Definition"
NRWNEMESI42GI11	Nemesis 4X IDi – Gen 2+ "Improved Definition"
NRWNEMESI4QGII1	Nemesis 4X QSi – Gen 2+ "Quick Silver" White Phosphor
NRWNEMESI4GGEA1	Nemesis 4X Ghost – Gen 3 "Ghost" "Quick Silver" White Phosphor FOM 1400
NRWNEMESI62GIS1	Nemesis 6X SDi – Gen 2+ "Standard Definition"
NRWNEMESI62GI11	Nemesis 6X IDi – Gen 2+ "Improved Definition"
NRWNEMESI6QGII1	Nemesis 6X QSi – Gen 2+ "Quick Silver" White Phosphor
NRWNEMESI6GGEA1	Nemesis 6X Ghost – Gen 3 "Ghost" "Quick Silver" White Phosphor FOM 1400
ACCESSORIES	
IAIR850IR000002	IR850W Wide Angle Adjustable Long Range IR Illuminator
ANAM000045	Extended Rail Adapter #85
ANHCO00004	Hard Shipping/Storage Case (F200) #102

* State Department export license is required. Please check export regulations on Page 59

CO-MINI

Night Vision Clip-On System

Designed for short-to-medium range observation, the Armasight CO-MINI is the most compact commercially available clip-on night vision device. The CO-MINI uses image intensification technology and is designed to convert most low-to-mid power daytime sights, scopes, or binoculars into night vision devices. The CO-MINI can be mounted in seconds without tools. It can be attached in front of a day riflescope (using its quick-release Picatinny mount) or directly onto the day scope (or binocular/ telescope) objective lens with the included adaptor.

The CO-MINI is suitable for use with most commercial and military specification daytime sights, telescopes or binoculars (up to 6X magnification). Because the CO-MINI can be easily mounted in front of the user's existing day scope, comfort is never sacrificed, while shot release and follow through remain accurate.

The clip-on device is factory bore-sighted to greater than 1MOA accuracy, so no re-zeroing is necessary. It really is as simple as mount and shoot!

The Armasight CO-MINI is intended primarily for use by demanding hunters and in short-range warfare, where field of view and ease of use is more important than high magnification. Packed with innovative and important features like variable gain control, automatic bright light shut-off, and wireless remote control, the Armasight CO-MINI is designed to make quick, intuitive shooting just as easy at night as it is during the day.

The Armasight CO-MINI is equally as effective whether mounted to a brand name or lesser-known day scope at magnifications ranging from 2-6X. The Armasight CO-Mini can be equipped with high-performance Gen 2+ and Gen 3 variants image intensifier tubes using Green phosphor or Armasight's "Quick Silver" and "Ghost" image intensifier tubes, which provide users with natural B&W night vision image.

- Ⓐ **Simple and quick conversion of daytime scope, sight or binoculars to Night Vision**
- Ⓐ **Mounts in front of riflescope with no re-zeroing required**
- Ⓐ **Equipped with Wireless Remote Control**
- Ⓐ **Variable Gain Control**
- Ⓐ **Powered by a single alkaline 1.5V AA or 3V CR123A lithium battery**
- Ⓐ **Quick Release Mount**
- Ⓐ **Mil Standard Compliant**
- Ⓐ **Limited Two-Year Warranty**

Magnification	1X (recommended to use with up to 6X day time optics)
Lens System	38mm; F/1.26
Field of view (°)	22
Dimensions (mm/in)	125 x 68 x 55 / 4.9 x 2.7 x 2.2
Weight (kg/lbs)	0.48 / 1.06

Part NO.	Name
PRODUCTS FOR US MARKET	
NSCCOMINI126D1	CO-Mini ID – Gen 2+ "Improved Definition" 47-54 lp/mm
NSCCOMINI126DH1	CO-Mini HD – Gen 2+ "High Definition" 55-72 lp/mm
NSCCOMINI1Q9D1	CO-Mini QS MG – Gen 2+ "Quick Silver" White Phosphor 47-54 lp/mm, Manual Gain
NSCCOMINI139DB1	CO-Mini 3 Bravo MG – Gen 3, 57 lp/mm (min) - 64 lp/mm (typical), Manual Gain
NSCCOMINI1G9DA1	CO-Mini Ghost MG – Gen 3 "Ghost" White Phosphor 47-57 lp/mm, Manual Gain
NSCCOMINI139DA1	CO-Mini 3 Alpha MG – Gen 3 High Performance 64-72 lp/mm, Manual Gain
NSCCOMINI1P9DA1	CO-Mini 3P MG – Gen 3 High Performance ITT 64-72 lp/mm PINNACLE® Thin-Filmed Auto-Gated IIT, Manual Gain
NSCCOMINI1F9DA1	CO-Mini FLAG MG – "FLAG" Filmless Auto-Gated IIT (comparable to Gen 4) 64-72 lp/mm, Manual Gain
PRODUCTS FOR INTERNATIONAL MARKET *	
NSCCOMINI126H1	CO-Mini HDi – Gen 2+ "High Definition"
NSCCOMINI1G9EA1	CO-Mini Ghost E MG – Gen 3 "Ghost" White Phosphor FOM 1400, Manual Gain
NSCCOMINI139EA1	CO-Mini 3E MG – Gen 3 High Performance FOM 1400, Manual Gain
NSCCOMINI139NA1	CO-Mini 3N MG – Gen 3 High Performance FOM 1600, Manual Gain

ACCESSORIES SEE ON PAGE 39

* State Department export license is required. Please check export regulations on Page 59



CO-MR

Night Vision Clip-On System



The Armasight CO-MR (Clip-On Medium Range) is one of the most advanced night vision clip-on systems for mid-range shooting, and stands out from the competition when it comes to clarity, versatility, reliability, function, and value.

The Armasight CO-MR converts your existing day scope into a night vision device and provides excellent target acquisition and aiming capabilities for the demanding sports shooter, hunter, military, law enforcement, and security personnel. Engineered using the latest advancements in Night Vision technology, the Armasight CO-MR eliminates the traditional requirement of removing your existing day scope from your rifle to replace it with a dedicated night vision sight (which would also involve re-zeroing). The CO-MR simply mounts in front of your existing day scope.

Because the CO-MR is factory bore-sighted to tolerances of less than 1 MOA, no re-zeroing is required. The CO-MR allows the user to maintain consistent positioning and shooting accuracy, all while maintaining the use of a fully familiar day scope.

A wireless remote control unit can be placed anywhere on the user's weapon, allowing quick and easy activation of the CO-MR.

Recommended for use with day scopes of up to 6-7X magnification, the Armasight CO-MR is equipped with a locking, quick-disconnect mounting system that provides the user with a simple and fast way to attach or detach the CO-MR on any standard Weaver or Picatinny rail.

- Ⓐ **Simple and quick conversion of daytime scopes to Night Vision**
- Ⓐ **Mounts in front of any daytime scope, no re-zeroing required**
- Ⓐ **Equipped with wireless remote control**
- Ⓐ **Powered by a single alkaline 1.5V AA or 3V CR123A lithium battery**
- Ⓐ **Bright-light indicator**
- Ⓐ **Automatic brightness control**
- Ⓐ **Quick-release mount**
- Ⓐ **Mil standard compliant**
- Ⓐ **Limited two-year warranty**



Magnification	1X (recommended to use with up to 6X-7X day time optics)
Lens system	80mm; F/1.2
Field of view (°)	12.6
Dimensions (mm/in)	180 x 80 x 80 / 7.1 x 3.2 x 3.2
Weight (kg/lbs)	0.69 / 1.5

Part NO.	Name
PRODUCTS FOR US MARKET	
NSSCOMR0012MDS1	CO-MR SD MG – Gen 2+ "Standard Definition" 45-51 lp/mm, Manual Gain
NSSCOMR0012MDI1	CO-MR ID MG – Gen 2+ "Improved Definition" 47-54 lp/mm, Manual Gain
NSSCOMR001QMDI1	CO-MR QS MG – Gen 2+ "Quick Silver" White Phosphor 47-54 lp/mm, Manual Gain
NSSCOMR00123DH1	CO-MR HD – Gen 2+ "High Definition" 55-72 lp/mm
NSSCOMR00137DB1	CO-MR 3 Bravo MG – Gen 3, 57 lp/mm (min) - 64 lp/mm (typical), Manual Gain
NSSCOMR00133DA1	CO-MR 3 Alpha – Gen 3, 57 lp/mm (min) - 64 lp/mm (typical)
NSSCOMR001GMDA1	CO-MR Ghost MG – Gen 3 "Ghost" White Phosphor 47-57 lp/mm, Manual Gain
NSSCOMR001P3DA1	CO-MR 3P – Gen 3 High Performance ITT 64-72 lp/mm PINNACLE® Thin-Filmed Auto-Gated IIT
PRODUCTS FOR INTERNATIONAL MARKET *	
NSSCOMR0012MIS1	CO-MR SDi MG – Gen 2+ "Standard Definition", Manual Gain
NSSCOMR0012MI1	CO-MR IDi MG – Gen 2+ "Improved Definition", Manual Gain
NSSCOMR001QMII1	CO-MR QSi MG – Gen 2+ "Quick Silver" White Phosphor, Manual Gain
NSSCOMR00123IH1	CO-MR HDi MG – Gen 2+ "High Definition", Manual Gain
NSSCOMR001GGEA1	CO-MR Ghost MG – Gen 3 "Ghost" White Phosphor FOM 1400, Manual Gain
NSSCOMR00137EA1	CO-MR 3E MG – Gen 3 High Performance FOM 1400, Manual Gain
NSSCOMR00137NA1	CO-MR 3N MG – Gen 3 High Performance FOM 1600, Manual Gain
ACCESSORIES SEE ON PAGE 39	

* State Department export license is required. Please check export regulations on Page 59

CO-LR

Night Vision Clip-On System

The Armasight CO-LR (Clip On – Long Range) is a night vision unit that mounts in front of any existing day scope, converting the scope into a night vision-capable device with a viewing range of up to 1000 yards. Suitable for use with most commercial and military specification daytime scopes (up to 12X magnification), the CO-LR can be mounted/dismounted on any standard Picatinny rail in seconds, with no special tools required. Because the CO-LR can be mounted to an existing day scope, no re-zeroing is required. The CO-LR allows the user to maintain consistent positioning and shooting accuracy, all while maintaining the use of a fully familiar day scope.

The CO-LR is packed with innovative features like variable gain control, bright light shut-off, and wireless remote control. MIL-STD-810 housing of CO-LR is designed to take just about anything the great outdoors can throw at it.

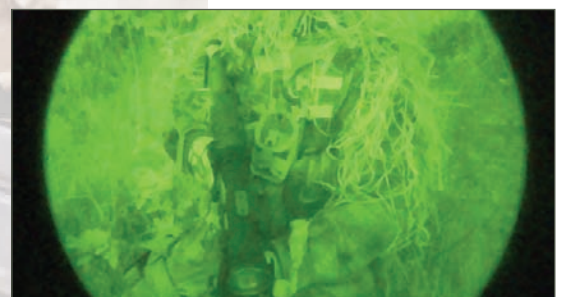


- ⓐ **Simple and quick conversion of day scope to Night Vision**
- ⓐ **Mounts in front of riflescope with no re-zeroing required**
- ⓐ **Equipped with wireless remote control**
- ⓐ **Variable gain control**
- ⓐ **Powered by a single alkaline 1.5V AA or 3V CR123A lithium battery**
- ⓐ **Quick-release mount**
- ⓐ **Mil standard compliant**
- ⓐ **Limited two-year warranty**

Magnification	1X (recommended to use with 3X - 12X day time optics)
Lens System	108 mm; F/1.54
Field of view (°)	10
Dimensions (mm/in)	235 x 97x 80 / 9.25 x 3.8 x 3.14
Weight (kg/lbs)	0.91 / 2



Part NO.	Name
PRODUCTS FOR US MARKET	
NSSCOLR00126DI1	CO-LR ID – Gen 2+ "Improved Definition" 47-54 lp/mm
NSSCOLR00126DH1	CO-LR HD – Gen 2+ "High Definition" 55-72 lp/mm
NSSCOLR001Q9DI1	CO-LR QS MG – Gen 2+ "Quick Silver" White Phosphor 47-54 lp/mm, Manual Gain
NSSCOLR00139DB1	CO-LR 3 Bravo MG – Gen 3, 57 lp/mm (min) - 64 lp/mm (typical), Manual Gain
NSSCOLR001G9DA1	CO-LR Ghost MG – Gen 3 "Ghost" White Phosphor 47-57 lp/mm, Manual Gain
NSSCOLR00139DA1	CO-LR 3 Alpha MG – Gen 3 High Performance 64-72 lp/mm, Manual Gain
NSSCOLR001P9DA1	CO-LR 3P MG – Gen 3 High Performance ITT 64-72 lp/mm PINNACLE® Thin-Filmed Auto-Gated IIT, Manual Gain
NSSCOLR001F9DA1	CO-LR FLAG MG – "FLAG" Filmless Auto-Gated IIT (comparable to Gen 4) 64-72 lp/mm, Manual Gain
PRODUCTS FOR INTERNATIONAL MARKET *	
NSSCOLR00126II1	CO-LR IDi – Gen 2+ "Improved Definition"
NSSCOLR001Q9II1	CO-LR QSi MG – Gen 2+ "Quick Silver" White Phosphor, Manual Gain
NSSCOLR00126IH1	CO-LR HDi – Gen 2+ "High Definition", Manual Gain
NSSCOLR001G9EA1	CO-LR Ghost MG – Gen 3 "Ghost" White Phosphor FOM 1400, Manual Gain
NSSCOLR00139EA1	CO-LR 3E MG – FOM 1400 Gen 3 High Performance FOM 1400, Manual Gain
NSSCOLR00139NA1	CO-LR 3N MG – FOM 1600 Gen 3 High Performance FOM 1400, Manual Gain
ACCESSORIES FOR CO-MINI, CO-MR, CO-LR	
ANAM000009	Scope Mounting System #1 for Scopes with 25.4-30 mm Diameter (CO-Mini, CO-MR)
ANAM000010	Scope Mounting System #2 for Scopes with 38-42 mm Diameter (CO-Mini, CO-MR)
ANAM000011	Scope Mounting System #3 for Scopes with 46.7-50 mm Diameter (CO-Mini, CO-MR)
ANAM000012	Scope Mounting System #4 for Scopes with 56-58.7 mm Diameter (CO-Mini, CO-MR)
ANAM000013	Scope Mounting System #6 for Scopes with 62 mm Diameter (CO-Mini, CO-MR)
ANAM000021	FSRS (Front Scope Rail System) #38
ANAM000045	Extended Rail Adapter #85 (CO-Mini, CO-MR, CO-LR)
ANHC000004	Hard Shipping/Storage Case (F200) #102
ANLE3X0008	3x Magnifier with Adapter # 54 (CO-Mini, CO-MR)
ANAM000031	Weaver Type Mount #60 for CO-MR
IAIR850IR000002	IR850W Detachable Wide Angle Adjustable Long Range Infrared Illuminator



* State Department export license is required. Please check export regulations on Page 59



**DIGITAL
NIGHT VISION**

PRIME D PRIME DC

Digital Night Vision Monoculars



Designed to offer the best possible performance at the lowest possible cost, Armasight Prime monoculars are exceptional digital night vision devices. Whether you choose to use it for camping, hunting, boating, or security, the Armasight Prime DC will allow you to look out into the night and unveil an entire world hidden in the darkness.

Available with various magnifications, the Armasight Prime monoculars are the absolute latest in entry-level Digital night vision, based on the high sensitivity CCD array. A built-in infrared illuminator ensures exceptional operation even in total darkness. The color LCD display even allows for low color saturation digital output. Prime D models are equipped with video-out capability. Compact and lightweight, these exceptional digital night vision monoculars outperform almost all other devices in their class.

- Ⓐ **Various magnifications**
- Ⓐ **High sensitivity CCD sensor**
- Ⓐ **Color LCD display (Prime DC)**
- Ⓐ **Video output (Prime D)**
- Ⓐ **Multi-coated all-glass optics**
- Ⓐ **Manual gain control**
- Ⓐ **Built-in infrared illuminator**
- Ⓐ **Compact, rugged design**
- Ⓐ **Utilizes two CR123 Lithium battery**
- Ⓐ **Limited two-year warranty**



Model	Prime D 3X	Prime D 5X	Prime DC 4X	Prime DC 6X
Sensor Type	CCD	CCD	CCD	CCD
Magnification	3X	5X	4X	6X
Field of view (°)	20.8	15	12	8
Dimensions (mm/in)	205 x 73 x 60 / 8.1 x 2.9 x 2.3	210 x 76 x 60 / 8.3 x 3.0 x 2.3	180x80x60 / 7.1x3.1x2.4	200x80x60 / 7.9x3.1x2.4
Weight (kg/lbs)	0.44 / 1.0	0.5 / 1.1	0.5 / 1.1	0.55 / 1.2

Part NO.	Name
PRODUCTS FOR US AND INTERNATIONAL MARKETS	
DKMPRIMDB030001	Prime D 3x Digital Night Vision Monocular with Video Out
DKMPRIMDB050001	Prime D 5x Digital Night Vision Monocular with Video Out
DKMPRIMDC040001	Prime DC 4x Color Digital Night Vision Monocular
DKMPRIMDC060001	Prime DC 6x Color Digital Night Vision Monocular
ACCESSORIES FOR Prime D	
ANKI000016	IR810 Long Range IR Illuminator w/Transfer Piece #21
ANKIW00016	IR810W Wide Angle Adjustable X-Long Range IR Illuminator w/Transfer Piece #21
ACCESSORIES FOR Prime DC	
ANKI000138	IR810 Long Range IR Illuminator w/Transfer Piece #138
ANKIW00138	IR810W Wide Angle Adjustable X-Long Range IR Illuminator w/Transfer Piece #138



BIT

Digital Night Vision Monoculars

JANUS

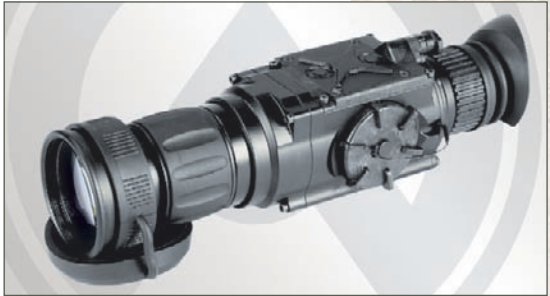
Digital Night Vision Bi-Oculars

The Armasight Bit and Janus are the professional grade, digital night vision systems with optical 5x or 10x magnification, making it the most powerful monocular in its class. Sensitive to both near-infrared and visible light, the high performance CCD imaging system provides round-the-clock observation. The Bit and Janus are effective regardless of light conditions - in daylight, in natural lighting, and at nighttime.

Key features include: wireless remote control, a detachable long-range/wide angle IR850W illuminator, and an optional Digital Recorder with SD card. The Bit and Janus are equipped with a standard NTSC/PAL video input/output function that makes it possible to connect to an external video monitor, or to record images for field documentation or training purposes. The devices uses the same multi-pin connector to connect the optional digital video recorder and external power access.

Whether you want to use it for camping, hunting, law enforcement, boating, or security, the Armasight high performance digital systems will help you look out into the night, revealing a whole new world previously hidden by darkness.

- Ⓐ Available in two versions — with magnification of 5x and 10x
- Ⓐ High-performance grayscale CCD camera
- Ⓐ Bright-light tolerance
- Ⓐ Lightweight and robust design
- Ⓐ Easy to operate
- Ⓐ Manually adjustable eyepiece and objective lens
- Ⓐ Real-time display
- Ⓐ Current operational state information display
- Ⓐ Analog video input (NTSC/PAL) and output (PAL)
- Ⓐ Digital video recorder (optional)
- Ⓐ Filled with dry nitrogen to prevent internal fogging
- Ⓐ Waterproof
- Ⓐ Limited two-year warranty



Model	Bit 5X	Bit 5X-10X	Janus 5X	Janus 5X-10X
Sensor Type	High-rate High Resolution Near-IR Hypersensitive CCD			
Magnification	5X	5X / 10X	5X	5X / 10X
Field of view (°)	5.7 x 4.2	3.2 x 2.3	5.7 x 4.2	3.2 x 2.3
Dimensions (mm/in)	240x69x65 / 9.4 x 2.7 x 2.6	335x70x74 / 13.2 x 2.8 x 2.9	280x106x65 / 11.0 x 4.1 x 2.6	375x106x74 / 14.8 x 4.1 x 2.9
Weight (kg/lbs)	0.74 / 1.6	1.07 / 2.4	0.92 / 2.0	1.25 / 2.8

Part NO.	Name
DAMBITBBX05PAL1	Bit 5x - High Performance 5x Digital Night Vision Monocular, Resolution 752x582. Comes with IR850W Detachable Wide Angle Adjustable X-Long Range IR Illuminator.
DAMBITBBX10PAL1	Bit 5x-10x - High Performance 5x-10x (with A-Focal Doubler) Digital Night Vision Monocular, Resolution 752x582. Comes with IR850W Detachable Wide Angle Adjustable X-Long Range IR Illuminator.
DABJANBBX05PAL1	Janus 5x - High Performance 5x Digital Night Vision Binocular, Resolution 752x582. Comes with IR850W Detachable Wide Angle Adjustable X-Long Range IR Illuminator.
DABJANBBX10PAL1	Janus 5x-10x - High Performance 5x-10x (with A-Focal Doubler) Digital Night Vision Binocular, Resolution 752x582. Comes with IR850W Detachable Wide Angle Adjustable X-Long Range IR Illuminator.
ACCESSORIES	
ANAF18X039	A-Focal Doubler - Converts from 5x to 10x
ATAM000004	Recorder DT - Digital Recorder for all Armasight High Performance Digital Devices

DRONE PRO

Digital Night Vision Riflescopes

The Drone Pro professional digital night vision riflescope is one of the most advanced scopes in its class. Sensitive to both near-infrared and visible light, the high performance CCD imaging system of the Drone PRO provides round-the-clock and all weather target detection and discrimination. The Drone PRO is effective regardless of light conditions - in daylight, natural lighting, and at nighttime. Drone Pro scope is an ideal product for professional and amateur use, such as for hunting, security, sports shooting, and nighttime observation.

Key features include: wireless remote control, detachable long-range/wide angle IR850W illuminator, and a quick-release Picatinny mount with locks. The Drone PRO is equipped with a standard NTSC/PAL video input/output function that makes it possible to connect to an external video monitor, or to record images for field documentation or training purposes. The device uses the same multi-pin connector to connect the optional digital video recorder and external power access.

To accommodate individual user needs, the Drone PRO has a variety of digitally controlled options, including customizable display brightness, reticle pattern, and reticle color.

The quick-release mount of the Drone PRO fits any Picatinny, MIL-STD-1913, or Weaver weapon rail. The mount's lever-cam clamping device ensures easy, quick, and reliable mounting and removal.

Whether you want to use it for camping, hunting, boating, or security, the Armasight Drone will help you see the nocturnal world with crystalline clarity.

- Ⓐ **Available in two versions — with magnification of 5x and 10x**
- Ⓐ **High-performance gray scale CCD camera**
- Ⓐ **Bright-light tolerance**
- Ⓐ **Lightweight and robust design**
- Ⓐ **Easy to operate**
- Ⓐ **Manually adjustable eyepiece and objective lens**
- Ⓐ **Real-time display**
- Ⓐ **Interchangeable reticle pattern**
- Ⓐ **Current operational state information display**
- Ⓐ **Wireless remote control**
- Ⓐ **Analog video input (NTSC/PAL) and output (PAL)**
- Ⓐ **Digital video recorder (optional)**
- Ⓐ **Filled with dry nitrogen to prevent internal fogging**
- Ⓐ **Waterproof**
- Ⓐ **Limited two-year warranty**

Model	Drone PRO 5x	Drone PRO 5x-10x
Sensor Type	High-rate High Resolution Near-IR Hypersensitive CCD	
Magnification	5X	5X / 10X
Field of view (°)	5.7 x 4.2	3.2 x 2.3
Dimensions (mm/in)	266x69x83 / 10.5x2.7x3.3	355x70x83 / 14.0x2.8x3.3
Weight (kg/lbs)	0.91 / 2.0	1.24 / 2.7

Part NO.	Name
DARDROPBB05PAL1	Drone Pro 5x - High Performance 5x Digital Night Vision Rifle Scope, Resolution 752x582. Comes with IR850W Detachable Wide Angle Adjustable X-Long Range IR Illuminator.
DARDROPBB10PAL1	Drone Pro 5x-10x - High Performance 5x-10x (with A-Focal Doubler) Digital Night Vision Rifle Scope, Resolution 752x582. Comes with IR850W Detachable Wide Angle Adjustable X-Long Range IR Illuminator.
ACCESSORIES	
ANAF18X039	A-Focal Doubler - from 5x to 10x
ATAM000004	Recorder DT - Digital Recorder for all Armasight High Performance Digital Devices
ANAM000045	Extended Rail Adapter #85 - Dovetail Weaver Picatinny Rail Adapter Extends 7.5" to 11.5" Tactical Scope Mount
ANH000004	Hard Shipping/Storage Case (F200) #102



CIPHER

Digital Night Vision Clip-On System



The Cipher is a professional grade digital night vision clip-on system intended to be used for short to medium ranges in conjunction with any daytime optics, such as spotting scopes, binoculars, and riflescopes.

The Armasight Cipher provides excellent target acquisition and aiming capabilities for the demanding sports shooter, game hunter, military, law enforcement, or security professional. Using a high-sensitivity CCD array, the Armasight Cipher eliminates the traditional requirement of removing your existing day scope from your rifle, to replace it with a dedicated night vision sight (which would also involve re-zeroing).

The Cipher is compatible with most commercial and military specification day scopes, and fits any Picatinny, MIL-STD-1913, or Weaver rail via the quick-release mount. Optional adapters make it possible to mount the Cipher directly to the objective lens of a variety of day scopes and binoculars.

The Cipher can be controlled with a wireless remote control that fastens to the weapon. A detachable long-range IR illuminator provides additional lighting and enables the use of the Cipher in extremely low light conditions or total darkness.

The Cipher is equipped with a standard video input/output function for connecting to an external video display, which allows the user to monitor or record for in-field documentation or training purposes.

The Cipher can be used in conjunction with other Armasight equipment, such as the Digital Video Recorder and the MCS Miniature Collimating Sight, which is mounted on the Cipher's Picatinny/Weaver side rail or detachable platform ring.

Extremely reliable and versatile, the Cipher is a useful multifunctional addition to any security or hunting equipment.

- Ⓐ **Converts your day scope, sight, or binoculars into night vision device**
- Ⓐ **Mounts in front of any day scope with no re-zeroing required**
- Ⓐ **High-performance grayscale CCD camera**
- Ⓐ **Bright-light tolerance**
- Ⓐ **Lightweight and robust design**
- Ⓐ **Real-time display**
- Ⓐ **Digitally controlled display brightness**
- Ⓐ **Analog video input and output**
- Ⓐ **Powered by two standard CR123A batteries.**
- Ⓐ **Filled with dry nitrogen to prevent internal fogging**
- Ⓐ **Waterproof**
- Ⓐ **Limited two-year warranty**

Sensor Type	High-rate High Resolution Near-IR Hypersensitive CCD
Magnification	1X
Field of view (°)	10 x 8
Dimensions (mm/in)	202x67x80 / 7.9x2.6x3.2
Weight (kg/lbs)	0.58 / 1.3

Part NO.	Name
DACCIPHBB01NTS1	Cipher - High Performance Digital Night Vision Clip-On System, Resolution 752x582. Comes with IR850W Detachable Wide Angle Adjustable X-Long Range IR Illuminator.
ACCESSORIES	
ATAM000004	Recorder DT - Digital Recorder for all Armasight High Performance Digital and Thermal Devices
ANAM000045	Extended Rail Adapter #85 - Dovetail Weaver Picatinny Rail Adapter Extends 7.5" to 11.5" Tactical Scope Mount
ANLE3X0008	3x Magnifier with Adapter # 54
ANAM000009	Scope Mounting System #1 for Scopes with 25.4-30 mm Objective Diameter
ANAM000010	Scope Mounting System #2 for Scopes with 38-42 mm Objective Diameter
ANAM000011	Scope Mounting System #3 for Scopes with 46.7-50 mm Objective Diameter
ANAM000012	Scope Mounting System #4 for Scopes with 56-58.7 mm Objective Diameter
ANAM000013	Scope Mounting System #6 for Scopes with 62 mm Objective Diameter
ANH000004	Hard Shipping/Storage Case (F200) #102



THERMAL IMAGING

PROMETHEUS

Thermal Imaging Monoculars

Armasight Prometheus is the latest and most technologically advanced thermal imaging monocular to enter the sporting, law enforcement, and military markets. The Prometheus product line is based on the latest FLIR Tau 2 VOx microbolometer core, and is available in a variety of models – each optimizing performance, price, and state-of-the-art technology for myriad uses and mission applications.

The Prometheus is a solid state, uncooled, long-wave infrared, magnified, dedicated handheld thermal imager intended for day and night engagements.

The 24/7 mission capability is only one of the strengths of Prometheus. The thermal imaging technology also allows you to detect targets by cutting through snow, dust, smoke, fog, haze, and other atmospheric obscurants. Unlike the use of laser targeting or near-infrared illumination to augment night vision equipment, the Prometheus thermal imager is extremely difficult to detect with other devices, as it emits no visible light or RF energy.

- Ⓐ **The lightest and most compact scope in its class**
- Ⓐ **Easy and Intuitive Drop-down user interface**
- Ⓐ **Digital E-Zoom: 1x, 2x, 4x, and 8x**
- Ⓐ **Color Modes: White Hot/ Black Hot/ Rainbow/ Various Color modes**
- Ⓐ **Extended operation time with optional external battery power supply**
- Ⓐ **Recording: video output /optional Video Recorder with onboard replay**
- Ⓐ **Tactical scenarios (CQB, etc.)**
- Ⓐ **Waterproof, CNC machined aircraft-aluminum alloy construction**
- Ⓐ **Rapid start-up**
- Ⓐ **Made in USA**



Item	Prometheus 4 160-9 160-30	Prometheus 7 160-9 160-30	Prometheus 3 336-9 336-30 336-60	Prometheus 5 336-9 336-30 336-60	Prometheus 2 640-9 640-30	Prometheus 3 640-9 640-30
Magnification (NTSC/PAL)	4.0x / 4.8x	7.2x / 8.6x	2.8x / 3.4x	5.0x / 6.0x	1.5x / 1.8x	2.7x / 3.2x
Field of view X/Y (°)	5.5 / 4.0	3.0 / 2.2	7.8 / 5.9	4.3 / 3.3	14.8 / 11.8	4.3 / 3.3
Dimensions (mm/in)	255x70x70 / 10x2.7x2.7	275x70x75 / 10.9x2.7x2.9	255x70x70 / 10x2.7x2.7	275x70x75 / 10.9x2.7x2.9	255x70x70 / 10x2.7x2.7	275x70x75 / 10.9x2.7x2.9
Weight (kg/lbs)	0.55 / 1.2	0.65 / 1.4	0.55 / 1.2	0.65 / 1.4	0.55 / 1.2	0.65 / 1.4

Part NO.	Name
PRODUCTS FOR US MARKET	
TAT213MN4PROM41	Prometheus 4 160-30 , FLIR Tau 2 - 160x120 (25µm) 30Hz Core, 42mm Lens
TAT213MN7PROM71	Prometheus 7 160-30 , FLIR Tau 2 - 160x120 (25µm) 30Hz Core, 75mm Lens
TAT173MN4PROM31	Prometheus 3 336-30 , FLIR Tau 2 - 336x256 (17µm) 30Hz Core, 42mm Lens
TAT176MN4PROM31	Prometheus 3 336-60 , FLIR Tau 2 - 336x256 (17µm) 60Hz Core, 42mm Lens
TAT173MN7PROM51	Prometheus 5 336-30 , FLIR Tau 2 - 336x256 (17µm) 30Hz Core, 75mm Lens
TAT176MN7PROM51	Prometheus 5 336-60 , FLIR Tau 2 - 336x256 (17µm) 60Hz Core, 75mm Lens
TAT163MN4PROM21	Prometheus 2 640-30 , FLIR Tau 2 - 640x512 (17µm) 30Hz Core, 42mm Lens
TAT163MN7PROM31	Prometheus 3 640-30 , FLIR Tau 2 - 640x512 (17µm) 30Hz Core, 75mm Lens
PRODUCTS FOR INTERNATIONAL MARKET	
TAT219MN4PROM41	Prometheus 4 160-9 , FLIR Tau 2 - 160x120 9Hz Core, 42mm Lens
TAT219MN7PROM71	Prometheus 7 160-9 , FLIR Tau 2 - 160x120 9Hz Core, 75mm Lens
TAT179MN4PROM31	Prometheus 3 336-9 , FLIR Tau 2 - 336x256 9Hz Core, 42mm Lens
TAT179MN7PROM51	Prometheus 5 336-9 , FLIR Tau 2 - 336x256 9Hz Core, 75mm Lens
TAT169MN4PROM21	Prometheus 2 640-9 , FLIR Tau 2 - 640x512 9Hz Core, 42mm Lens
TAT169MN7PROM31	Prometheus 3 640-9 , FLIR Tau 2 - 640x512 9Hz Core, 75mm Lens
ACCESSORIES	
ATAM000004	Recorder DT - Digital Recorder for Armasight Digital and Thermal Devices
ANHCO00001	Hard Shipping/Storage Case (F100) #101

* State Department export license is required. Please check export regulations on Page 59

HELIOS

Thermal Imaging Bi-Oculars

The Armasight Helios line is the latest and most technologically advanced family of thermal imaging bi-oculars on the market today. Bi-ocular design is better for sustained viewing periods and improved depth perception. The Helios product line is based on the latest FLIR Tau 2 VOx microbolometer core, and includes a variety of different models, each optimizing performance, price, and state-of-the-art technology for a variety of uses and mission applications. The Helios is a solid state, uncooled, long-wave infrared, magnified, dedicated handheld thermal imager intended for day and nighttime missions.

The 24/7 mission capability is just one of the many strengths this product line has to offer. Thermal imaging technology also allows you to detect targets by cutting through snow, dust, smoke, fog, and other atmospheric obscurants. Unlike the use of laser targeting or near-infrared illumination to augment night vision equipment, Helios thermal imagers are extremely difficult to detect with other devices, as they emit no visible light or RF energy.

Armasight is convinced that the Helios thermal imaging bi-ocular represents one of the most sophisticated devices on the market today, due to its superior price-to-performance value.

- Ⓐ **The lightest and most compact scope in its class**
- Ⓐ **User selectable NTS C or PAL format**
- Ⓐ **Easy and Intuitive Drop-down user interface**
- Ⓐ **Digital E-Zoom: 1x, 2x, 4x, and 8x**
- Ⓐ **Color Modes: White Hot/ Black Hot/ Rainbow/ Various Color modes**
- Ⓐ **Extended operation time with optional external battery power supply**
- Ⓐ **Recording: video output /optional Video Recorder with onboard replay**
- Ⓐ **Tactical scenarios (CQB, etc.)**
- Ⓐ **Waterproof, CNC machined aircraft-aluminum alloy construction**
- Ⓐ **Rapid start-up**
- Ⓐ **Made in USA**

Item	Helios 4 160-9 160-30	Helios 7 160-9 160-30	Helios 5 336-9 336-30 336-60	Helios 3 640-9 640-30
Magnification (NTSC/PAL)	4.0x / 4.8x	7.2x / 8.6x	5.0x / 6.0x	2.7x / 3.2x
Field of view X/Y (°)	5.5 / 4.0	3.0 / 2.2	4.3 / 3.3	4.3 / 3.3
Dimensions (mm/in)	257x110x75 / 10.1x4.3x2.9	277x110x75 / 10.9x4.3x2.9	277x110x75 / 10.9x4.3x2.9	277x110x75 / 10.9x4.3x2.9
Weight (kg/lbs)	0.8 / 1.8	0.9 / 2	0.9 / 2	0.9 / 2

Part NO.	Name
PRODUCTS FOR US MARKET	
TAT213BN4HELI41	Helios 4 160-30 , FLIR Tau 2 - 160x120 (25µm) 30Hz Core, 42mm Lens
TAT213BN7HELI71	Helios 7 160-30 , FLIR Tau 2 - 160x120 (25µm) 30Hz Core, 75mm Lens
TAT173BN7HELI51	Helios 5 336-30 , FLIR Tau 2 - 336x256 (17µm) 30Hz Core, 75mm Lens
TAT176BN7HELI51	Helios 5 336-60 , FLIR Tau 2 - 336x256 (17µm) 60Hz Core, 75mm Lens
TAT163BN7HELI31	Helios 3 640-30 , FLIR Tau 2 - 640x512 (17µm) 30Hz Core, 75mm Lens
PRODUCTS FOR INTERNATIONAL MARKET	
TAT219BN4HELI41	Helios 4 160-9 , FLIR Tau 2 - 160x120 (25µm) 9Hz Core, 42mm Lens
TAT219BN7HELI71	Helios 7 160-9 , FLIR Tau 2 - 160x120 (25µm) 9Hz Core, 75mm Lens
TAT179BN7HELI51	Helios 5 336-9 , FLIR Tau 2 - 336x256 (17µm) 9Hz Core, 75mm Lens
TAT169BN7HELI31	Helios 3 640-9 , FLIR Tau 2 - 640x512 (17µm) 9Hz Core, 75mm Lens
ACCESSORIES	
ATAM000004	Recorder DT - Digital Recorder for Armasight Digital and Thermal Devices
ANH000001	Hard Shipping/Storage Case (F100) #101

* State Department export license is required. Please check export regulations on Page 59





ZEUS

Thermal Imaging Riflescopes

Armasight is excited to introduce its latest and most technologically advanced family of Zeus thermal imaging weapon sights to the sporting, law enforcement, and military markets. The Zeus product line is based on the latest FLIR Tau 2 VOx microbolometer core. Each model of the line has optimizing performance, price, and state-of-the-art technology for a variety of uses and mission applications ranging from the seriously committed hunter to the military designated marksman. While primarily designed as a weapon scope, the Zeus functions equally well in its collateral assignments as a magnified spotting scope or handheld thermal imager.

The Zeus is a solid state, uncooled, long-wave infrared, magnified dedicated weapon scope intended for day and night engagements without the need to remove the sight from the rifle. The 24/7 mission capability is just one of its many strengths. Thermal imaging technology also allows you to detect targets by cutting through snow, dust, smoke, fog, haze, and other atmospheric obscurants. Unlike the use of laser targeting or near-infrared illumination to augment night vision equipment, the Zeus thermal imaging weapon sight is extremely difficult to detect with other devices, as it emits no visible light or RF energy.

In addition to being the smallest and lightest in their class, Zeus thermal imaging weapon sights are characterized by their simple and intuitive controls, functions, and features that are layered among direct button adjustments, direct combination button functions, and electronic menu selections. This "layering" of easy-to-understand control functions provides the operator with a framework for customizing his preferences and exploiting the robust variety of setting options available in the Zeus. The Zeus has a unique series of menu selectable temperature sensitive "scenarios" for rapid target detection in addition to a variety of color display presentations based on a rich, upgradeable software package. A wireless remote switch is included to activate the Zeus thermal imaging weapon sight when positioned in the "standby" mode. The Zeus has the ability to record imagery and is equipped with a video-out capability in operator selectable NTSC or PAL formats. The Zeus uses the same multi-pin connector to provide video-in imagery, where there is a need for map or rangefinder display overlays, and external power access.

Zeus weapon installation is easy, repeatable, and reliable based on a unique and highly user-friendly MIL-STD-1913/Weaver/Picatinny rail-compatible, quick-release locking mechanism. The solid state technology and software algorithms, combined with a complementary color reticle platform, ensures maximum reticle contrast, high-level target accuracy, and boresight retention that cannot be achieved with mechanical boresight adjusters and traditional ballistic drums. This level of accuracy is translated into the electronic zoom (e-zoom) function of the Zeus thermal imaging weapon sights, which can be progressively increased from 1x to 2x to 4x and 8x without changing the point-of-aim to point-of-impact relationship of the targeting reticle.

The Zeus thermal imaging weapon sight represents one of the most sophisticated sighting devices available in today's market to hunters, SWAT teams, and military personnel, due to its superior price-to-performance value.

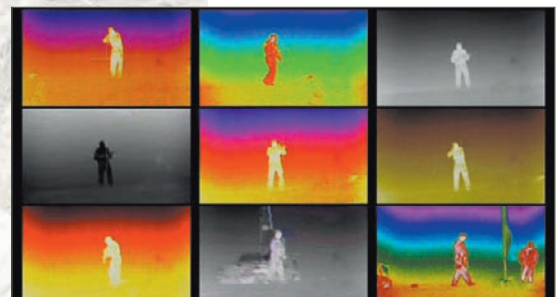


- Ⓐ **The lightest and most compact scope in its class**
- Ⓐ **User selectable NTSC or PAL format**
- Ⓐ **Easy and Intuitive Drop-down user interface**
- Ⓐ **Digital E-Zoom: 1x, 2x, 4x, and 8x**
- Ⓐ **Color Modes: White Hot/ Black Hot/ Rainbow/ Various Color modes**
- Ⓐ **6 onboard digitally controlled reticle patterns available: "Dot 4 MOA", "Line Dot", "Cross-Center Dot", "Cross", "Crosshair", and "No Reticle",**
- Ⓐ **Reticle Colors: Black, White, Red, and Cyan**
- Ⓐ **Extended operation time with optional external battery power supply**
- Ⓐ **Recording: video output/ optional Video Recorder with onboard replay**
- Ⓐ **Hunting scenario algorithms for optimized performance (Hog, Coyote, Mountain Lion, etc.)**
- Ⓐ **Tactical scenarios (CQB, etc.)**
- Ⓐ **Wireless remote control for tactical operations**
- Ⓐ **Waterproof, CNC machined aircraft-aluminum alloy construction**
- Ⓐ **Rapid start-up**
- Ⓐ **MIL-STD-1913 (Picatinny Rail) Quick-release Mount**
- Ⓐ **Shuttered eyeguard to prevent facial display backslash and maintain light security**
- Ⓐ **Made in USA**

Item	Zeus 4 160-30	Zeus 7 160-30	Zeus 3 336-30 336-60	Zeus 5 336-30 336-60	Zeus 2 640-30	Zeus 3 640-30
Magnification (NTSC/PAL)	4.0x / 4.8x	7.2x / 8.6x	2.8x / 3.4x	5.0x / 6.0x	1.5x / 1.8x	2.7x / 3.2x
Objective Lens Type	Germanium					
Core	FLIR Tau 2					
Pixel Array Format	160x120		336x256		640x512	
Pixel Size (µm)	25			17		
Resolution, mrad	0.60	0.33	0.40	0.23	0.40	0.23
Display Type	AMOLED SVGA 060					
Pixel Display Format	800x600					
Display Brightness	Discretely Adjustable to 8 Levels					
Turn-on Time, max (sec)	3					
Digital Zoom	1x, 2x, and 4x			1x, 2x, 4x, and 8x		
Field of view X/Y (°)	5.5 / 4.0	3.0 / 2.2	7.8 / 5.9	4.3 / 3.3	14.8 / 11.8	4.3 / 3.3
Lens Focal Length (mm)	42	75	42	75	42	75
Dimensions (mm/in)	255x70x80 10x2.8x3.2	275x70x80 10.8x2.8x3.2	255x70x80 10x2.8x3.2	275x70x80 10.8x2.8x3.2	255x70x80 10x2.8x3.2	275x70x80 10.8x2.8x3.2
Weight (kg/lbs)	0.7 / 1.5	0.8 / 1.8	0.7 / 1.5	0.8 / 1.8	0.7 / 1.5	0.8 / 1.8

Part NO.	Name
PRODUCTS FOR US MARKET	
TAT213WN4ZEUS41	Zeus 4 160-30 , FLIR Tau 2 - 160x120 (25µm) 30Hz Core, 42mm Lens
TAT213WN7ZEUS71	Zeus 7 160-30 , FLIR Tau 2 - 160x120 (25µm) 30Hz Core, 75mm Lens
TAT173WN4ZEUS31	Zeus 3 336-30 , FLIR Tau 2 - 336x256 (17µm) 30Hz Core, 42mm Lens
TAT176WN4ZEUS31	Zeus 3 336-60 , FLIR Tau 2 - 336x256 (17µm) 60Hz Core, 42mm Lens
TAT173WN7ZEUS51	Zeus 5 336-30 , FLIR Tau 2 - 336x256 (17µm) 30Hz Core, 75mm Lens
TAT176WN7ZEUS51	Zeus 5 336-60 , FLIR Tau 2 - 336x256 (17µm) 60Hz Core, 75mm Lens
TAT163WN4ZEUS21	Zeus 2 640-30 , FLIR Tau 2 - 640x512 (17µm) 30Hz Core, 42mm Lens
TAT163WN7ZEUS31	Zeus 3 640-30 , FLIR Tau 2 - 640x512 (17µm) 30Hz Core, 75mm Lens
PRODUCTS FOR INTERNATIONAL MARKET*	
TAT213WN4ZEUS41	Zeus 4 160-30 , FLIR Tau 2 - 160x120 (25µm) 30Hz Core, 42mm Lens
TAT213WN7ZEUS71	Zeus 7 160-30 , FLIR Tau 2 - 160x120 (25µm) 30Hz Core, 75mm Lens
TAT173WN4ZEUS31	Zeus 3 336-30 , FLIR Tau 2 - 336x256 (17µm) 30Hz Core, 42mm Lens
TAT173WN7ZEUS51	Zeus 5 336-30 , FLIR Tau 2 - 336x256 (17µm) 30Hz Core, 75mm Lens
TAT163WN4ZEUS21	Zeus 2 640-30 , FLIR Tau 2 - 640x512 (17µm) 30Hz Core, 42mm Lens
TAT163WN7ZEUS31	Zeus 3 640-30 , FLIR Tau 2 - 640x512 (17µm) 30Hz Core, 75mm Lens
ACCESSORIES	
ANAM000045	Extended Rail Adapter #85
ATAM000004	Recorder DT - Digital Recorder for all Armasight High Performance Digital and Thermal Devices

* State Department export license is required. Please check export regulations on Page 59





APOLLO

Thermal Imaging Clip-On Systems



Armasight is excited to introduce its latest and most technologically advanced family of Apollo thermal imaging clip-on systems to the sporting, law enforcement and military markets. The Apollo product line developed based on the latest FLIR Tau 2 VOx microbolometer core and optimizing performance, price, and state-of-the-art technology for a variety of users, from the committed hunter to the military designated marksman.

The Apollo is a solid state, uncooled, long-wave infrared, magnified dedicated scope intended for day and night engagements. The 24/7 mission capability is only one of the strengths of the Apollo. The thermal imaging technology also allows you to detect targets by cutting through snow, dust, smoke, fog, haze, and other atmospheric obscurants.

The Armasight Apollo eliminates the traditional requirement of removing your existing day scope from your rifle, to replace it with a dedicated thermal sight (which would also involve re-zeroing). The Apollo simply mounts in front of your own standard daytime optical sight. Factory bore-sighted to tolerances of less than 1 MOA, no re-zeroing is required. The Apollo allows the user to maintain consistent eye relief and shooting position, and because the user views his own day scopes reticle (which he is familiar with), no re-training is required.

In addition to being the smallest and lightest in their class, Apollo thermal imaging clip-on systems are characterized by their simple and intuitive controls, functions, and features that are layered among direct button adjustments, direct combination button functions, and electronic menu selections. This "layering" of easy-to-understand control functions provides the operator with a framework for customizing his preferences and exploiting the robust variety of setting options available in the Apollo. The Apollo has a unique series of menu selectable temperature sensitive "scenarios" for rapid target detection, in addition to a variety of color display presentations based on a rich, upgradeable software package. A wireless remote switch is included to activate the Apollo thermal imaging clip-on system when positioned in the "standby" mode. The Apollo has the ability to record imagery and is equipped with a video-out capability in operator selectable NTSC or PAL formats. The Apollo uses the same multi-pin connector to provide video-in imagery, where there is a need for map or rangefinder display overlays, and external power access.

Apollo weapon installation is easy, repeatable, and reliable based on a unique and highly user-friendly MIL-STD-1913/Weaver/Picatinny rail compatible, quick-release locking mechanism.

- Ⓐ **Simple and quick conversion of daytime scope to thermal imaging**
- Ⓐ **Mounts in front of any daytime scope, no re-zeroing required**
- Ⓐ **The lightest and most compact scope in its class**
- Ⓐ **User selectable NTSC or PAL format**
- Ⓐ **The latest Tau 2 17-micron uncooled FLIR core technology**
- Ⓐ **Display Type: AMOLED SVGA 800x600**
- Ⓐ **Easy and Intuitive Drop-down user interface**
- Ⓐ **Color Modes: White Hot/ Black Hot/ Rainbow/ Various Color modes**
- Ⓐ **Extended operation time with optional external battery power supply**
- Ⓐ **Recording: video output /optional Video Recorder with onboard replay**
- Ⓐ **Hunting scenario algorithms for optimized performance (Hog, Coyote, Mountain Lion, etc.)**
- Ⓐ **Tactical scenarios (CQB, etc.)**
- Ⓐ **Wireless remote control for tactical operations**
- Ⓐ **Waterproof, CNC machined aircraft-aluminum alloy construction**
- Ⓐ **Rapid start-up**
- Ⓐ **MIL-STD-1913 (Picatinny Rail) Quick Release Mount**
- Ⓐ **Integral MIL-STD-1913 rails on unit for optional day optics or accessories**
- Ⓐ **Made in USA**

Item	Apollo 324-30	Apollo 324-60	Apollo 640-30
Magnification		1x	
Core		FLIR Tau 2	
Refresh Rate	30 Hz	60 Hz	30 Hz
Objective Lens Type		Germanium	
Pixel Array Format		324x256	640x512
Pixel Size		25 μm	17 μm
Resolution, mrad	0.40	0.23	0.40
Display Type		AMOLED SVGA 060	
Pixel Display Format		800x600	
Display Brightness		Discretely Adjustable to 8 Levels	
Turn-on Time, max		3 sec	
Digital Zoom		1x, 2x, and 4x	1x, 2x, 4x, and 8x
Field of View (horizontal x vertical)	11° x 8°	11° x 8°	15° x 12°
Operating Temperature		-40 to +50 °C (-40 to +122 °F)	
Storage Temperature		-50 to +70 °C (-58 to +158 °F)	
Weapon Mount Type		Picatinny MIL-STD-1913 and Weaver Rails	
Overall Dimensions		217x70x80 mm (8.5"x2.8"x3.2")	
Height of the Apollo Axis above Rail		40 mm (1.57 in)	
Weight (w/o Batteries)		0.7 kg (1.5 lbs)	

Part NO.	Name
PRODUCTS FOR US MARKET	
TAT253CN4APOL01	Apollo 324-30 , FLIR Tau 2 - 324x256 (25μm) 30Hz Core, 42mm Lens
TAT256CN4APOL01	Apollo 324-60 , FLIR Tau 2 - 324x256 (25μm) 60Hz Core, 42mm Lens
TAT163CN4APOL01	Apollo 640-30 , FLIR Tau 2 - 640x512 (17μm) 30Hz Core, 42mm Lens
PRODUCTS FOR INTERNATIONAL MARKET*	
TAT253CN4APOL01	Apollo 324-30 , FLIR Tau 2 - 324x256 (25μm) 30Hz Core, 42mm Lens
TAT163CN4APOL01	Apollo 640-30 , FLIR Tau 2 - 640x512 (17μm) 30Hz Core, 42mm Lens
ACCESSORIES	
ATAM000004	Recorder DT - Digital Recorder for all Armasight Digital and Thermal Devices
ANAM000009	Scope Mounting System #1 for Scopes with 25.4-30 mm Objective Diameter
ANAM000010	Scope Mounting System #2 for Scopes with 38-42 mm Objective Diameter
ANAM000011	Scope Mounting System #3 for Scopes with 46.7-50 mm Objective Diameter
ANAM000012	Scope Mounting System #4 for Scopes with 56-58.7 mm Objective Diameter
ANAM000013	Scope Mounting System #6 for Scopes with 62 mm Objective Diameter
ANLE3X0008	3x Magnifier with Adapter # 54 for Apollo/CO-Mini/CO-MR/Cipher
ANAM000045	Extended Rail Adapter #85

* State Department export license is required. Please check export regulations on Page 59





DIRECT VIEW

AIM PRO AIM PRO-L

Advanced Integrated Mount

The AIM PRO is the latest MIL-STD-810G-compliant evolution of the Armasight AIM. The AIM (Advanced Integrated Mount) presents a revolutionary new concept of night vision targeting. This night vision accessory allows the operator to convert his night vision monocular into a weapon sight. The AIM is incorporated into a low-profile housing that has an integral MIL-STD-1913 Picatinny rail grabber mount on the underside, and a dovetail mount on the top. By mounting AIM onto your rifle and fitting it with either a night vision monocular or AIM optional day optic, the AIM can be bore-sighted to your rifle; the operator can switch between day and night modes as required, without having to readjust.

Unlike conventional systems that require the night vision unit to be mounted behind a day optic, the AIM projects the reticle directly into the night vision monocular lens. In practice, what this means is that there is no longer a reduced field of view through the night vision device, or any shadowed area that is difficult to see through (caused by conventional red-dot sights optics or outer edges). A small "HUD"-type prism on the front of the AIM unit projects a 65MOA "Circle" and single 3.2MOA center aiming "Dot" directly into the night vision lens.

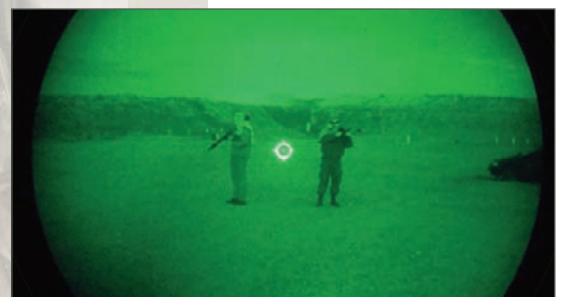
The Armasight AIM PRO-L allows the user to mount a 3x night vision monocular directly onto their weapon for an extended shooting range.

The adaptability of the AIM PRO to virtually any night vision monocular inherently makes it a "critical need" item for all law enforcement and military professionals, hunters, and professional shooters.

- Ⓐ **Converts standard night vision monoculars into passive night vision weapon sights**
- Ⓐ **Rapid and easy target acquisition**
- Ⓐ **AIM eliminates the need for infrared laser or co-witnessed red dot sight**
- Ⓐ **No obstructing optics or parts in your field of view**
- Ⓐ **The only solution providing 100% full field of view**
- Ⓐ **Adjustable reticle brightness**
- Ⓐ **Optional 3.5x daytime aiming solution**
- Ⓐ **Fits any MIL-STD-1913 Picatinny or Weaver rails with adjustable, locking, quick-detach mount**

Model	AIM PRO	AIM PRO-L
"Circle with Dot" reticle size	65±2	65±2
Adjustment Precision Range (deg. of arc)	±1,5	±1,5
Reticle Illumination Adjustments	digital	digital
Levels of Reticle Brightness	11	11
Immersion	till 1 m for 30 minutes	till 1 m for 30 minutes
Overall Dimensions (mm/in)	169×87×42 / 6.6×3.4×1.6	270×87×42 / 1.6×3.4×1.6
Weight (g/oz)	180 / 6.3	252 / 8.9

Part NO.	Name
ANKI000032	AIM PRO - Advanced Integrated Mount Pro (converts NV monocular into a rifle scope)
ANKI000049	AIM PRO-L - Advanced Integrated Mount Pro Long (converts 3x NV monocular into a rifle scope)
ACCESSORIES	
ANKI000046	AIM PVS14 Bracket #62 - Bracket to attach PVS-14 onto AIM-Pro and AIM-Pro-L
ANKI000048	AIM 3x Booster #52 - Day-Time 3x Magnifier for AIM-Pro





MCS

Miniature Collimating Sight

The Armasight MCS (Miniature Collimating Sight) is a passive targeting micro LED collimating sight for “both-eyes open,” rapid target acquisition. The MCS is rugged, lightweight and designed to mount onto a variety of existing magnified day optics as well as MIL-STD-1913 Picatinny and Weaver-style rails.

The Armasight MCS is the only sight on the market in its class that features a dual reticle pattern. The user can select a 3.5 MOA “Dot” reticle or 20 MOA “Ring” reticle pattern, depending on mission requirements. The MCS is compatible with night vision devices of all generations. Reticle intensity is regulated by an automatic brightness control sensor, which can also be overridden by the user to adjust the brightness mode as required.

The MCS is designed to significantly improve accuracy and efficiency of virtually any weapon, from handguns and pistols to assault rifles and light machine guns. The compact size and versatility of the MCS makes it an ideal secondary/backup optical sight. Accurate and reliable, the Armasight MCS features 1.2 MOA/click windage and 1.5 MOA/click adjustments. A unique optical design allows for a parallax-free, “always on the center” reticle.

The unit is waterproof, and has been tested against salt, fog, dust, vibration, and significant drops. It has also been fired from a variety of firearms for thousands of rounds. The Armasight MCS complies with MIL-STD-810G requirements. The MCS features a unique pivot lens cover with anti-reflective coating, and works on a single, easy to replace CR2032 3V battery.



- Ⓐ **Tactile click stops for windage & elevation adjustments**
- Ⓐ **A switchable 3.5 MOA dot to 20 MOA ring reticle pattern**
- Ⓐ **Reticle automatic brightness control based on the target area brightness**
- Ⓐ **Rapid target acquisition**
- Ⓐ **True night vision compatible mode**
- Ⓐ **User configurable open or tube sight mode**
- Ⓐ **Riflescope-mounted or Weaver-mounted variations**
- Ⓐ **Battery change with no re-zeroing required**
- Ⓐ **Large heads-up display with wide field of view**
- Ⓐ **Parallax-free performance**
- Ⓐ **Submersible to 10m (33 ft.) of water**
- Ⓐ **Push button controls for reticle switching, manual override of auto brightness, night vision mode, and on/off function**
- Ⓐ **Anti-reflection coatings with lens cover to maintain covertness**
- Ⓐ **Limited two-year warranty**

Magnification	1X (unity)
Exit Pupil (mm)	20x15
Interchangeable Reticle Pattern:	
- Dot (MOA)	3.5 (10 cm at 100 m)
- Circle (MOA)	20 (60 cm at 100 m)
Reticle Brightness Adjustment	Auto / Manual (MAX or MIN positions)
Waterproof	10m for 1 hour
Mounting System	for Picatinny Rail or for ACOG 4x32 (Trijicon) riflescope
Dimensions (mm/in):	
- ver. for Picatinny rail	48 x 40 x 47 / 1.9 x 1.6 x 1.8
- ver. for ACOG 4x32	48 x 44 x 52 / 1.9 x 1.7 x 2.0
Weight (g/oz)	65 / 2.3

Part NO.	Name
DAS01XX25MCSBLC	MCS Black Color
DAS01XX25MCSSTAN	MCS Tan Color
DAS01XX25MCSBLC2	MCS-QR Black Color with Quick Release Mount
DAS01XX25MCSSTAN2	MCS-QR Tan Color with Quick Release Mount
ACCESSORIES	
ADKI3X0001	TIME-3X - 3x Magnifier with 1.49"/37.8 mm Optical Height with QR Mount (works with Armasight MCS, All AimPoint and EOTech Models)
ANAM000017	Riser 1.5 #55 for MCS



DAYTIME BINOCULARS

The daytime binoculars that offers plenty of magnification, waterproof construction, built-in range finder reticle purposed for Military, Law Enforcement or an outdoor adventurer's needs.

The binoculars provides a powerful magnification and crystal clear optics, that deliver a full range of color and clarity. The multicoated optics of binoculars is designed to enhance the resolution and contrast of your image in extremely bright conditions.

Built-in universal range finder allows for accurate target measurements and range estimates.

The binoculars are waterproof and shockproof and can reach the standard of GJB/240, GJB150 and MIL-STD-810.

8x36 is the compact binocular with a range finding reticle.

8x30C is the binocular with inter-build compass and a range finding reticle.

7x50 is the binocular with a range finding reticle.

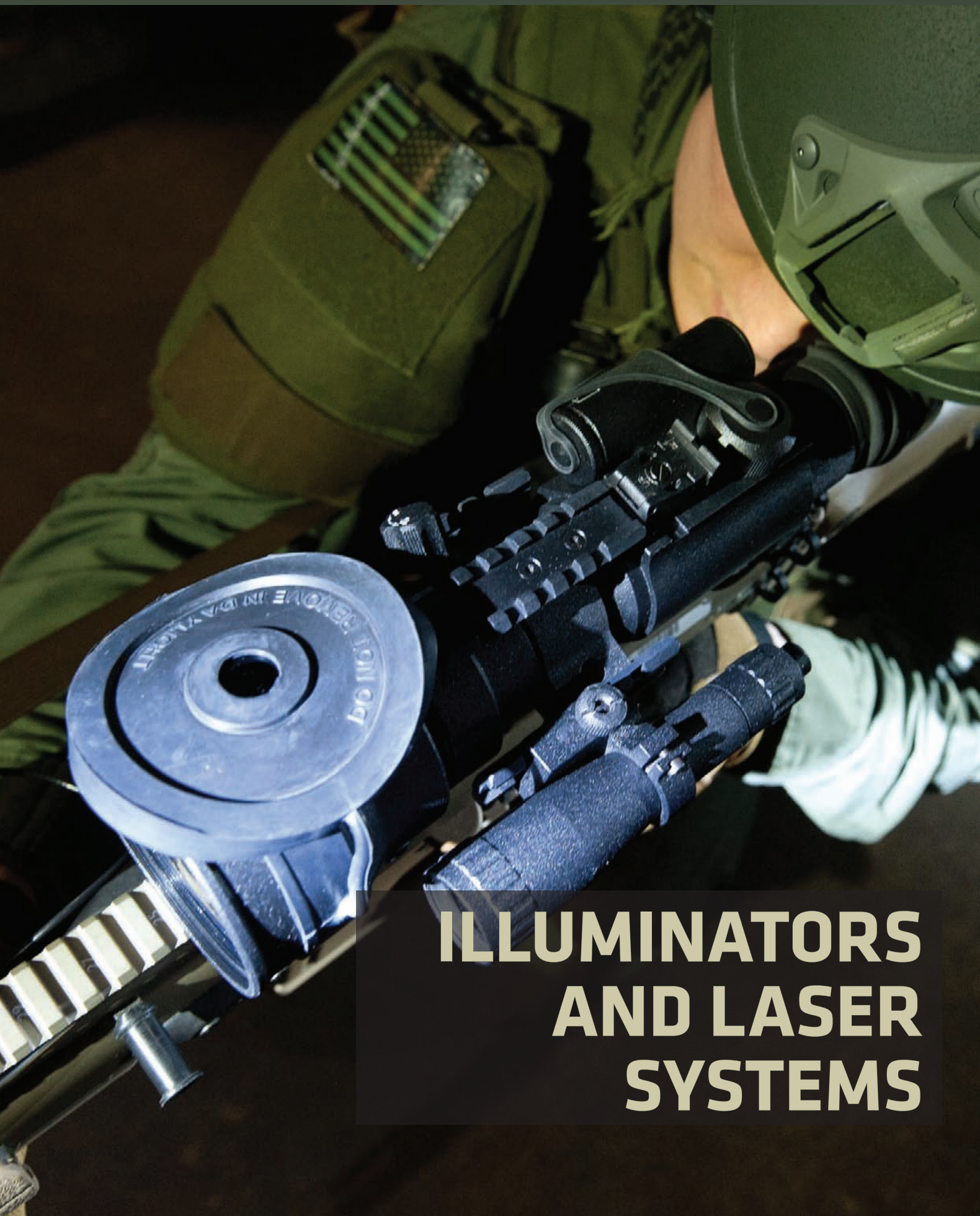
10x42 is the binocular with a range finding reticle.

- Ⓐ **Designed for professional use**
- Ⓐ **Waterproof and shockproof to military standard MIL-STD-810**
- Ⓐ **Built-in universal rangefinder**
- Ⓐ **Multicoated optics**
- Ⓐ **Full rubber body armoring**
- Ⓐ **Individual eye focus**
- Ⓐ **Limited two-year warranty**



Item	8x36	8x30C	7x50	10x42
Magnification	8x	8x	7x	10x
Objective Lens Diameter (mm)	36mm	30 mm	50 mm	42mm
Field of View (°)	7.0	8.0	7.5	6.0
Exit Pupil (mm)	4.4	3.7	7.1	4.2
Eye Relief (mm)	16	18	23	15
Resolution	≤6.2"	≤4.5"	≤4.5"	≤8.6"
Relative Brightness	20.3	14.0	50.4	17.6
Dimensions (mm/in)	165x127x65 / 6.5x5x2.6	120x167x77 / 4.7x6.6x3	200x150x85 / 7.9x5.9x3.3	155x132x55 / 6.1x5.2x2.2
Weight (kg/lb)	0.6 / 1.3	0.6 / 1.3	1.36 / 3	0.76 / 1.7

Part NO.	Name
DAB08X36RF0ARM1	8x36 Binoculars with Range Finder
DAB08X30RFCARM1	8x30C Binoculars with Compass & Range Finder
DAB07X50RF0ARM1	7x50 Binoculars with Range Finder
DAB10X42RF0ARM1	10x42 Binoculars with Range Finder



ILLUMINATORS AND LASER SYSTEMS

DRAKOS

Multi-Spectral Laser Aiming/ Illumination Devices



The Armasight Drakos is the new series of an innovative, rugged, multi-spectral Class I near-infrared and visible/near-infrared laser aiming devices, designed to mount via a locking quick-release MIL-STD-1913 rail grabber on to a variety of kinetic weapons for day, low-light, and nighttime targeting. The Drakos is equipped with a wireless remote control; the laser operates on either a single CR123A 3V lithium or AA 1.5V battery, and the battery compartment adapter comes standard, which provides more than two thousand two-second activations of the lasers. The Drakos series is designed to withstand kinetic recoil of 0.50 caliber and .338 caliber Lapua ammunition, and is MIL-STD-810G compliant. The Armasight Drakos' performance level, along with its adaptability to virtually any night vision device, inherently makes it a "critical need" item for all law enforcement professionals, military personnel, hunters, and professional shooters.



- Ⓐ **Tactile click stops for windage & elevation adjustments**
- Ⓐ **Rapid active target acquisition**
- Ⓐ **True night vision compatible mode**
- Ⓐ **Utilizes single CR123A lithium battery or AA Alkaline, adapter included**
- Ⓐ **Aiming lasers are co-boresighted**
- Ⓐ **Will not cause damage to eyes**
- Ⓐ **MIL-STD-810G compliant**
- Ⓐ **Limited two-year warranty**

Model	Drakos	Drakos-I	Drakos-II
Wavelength (nm)	850	850	850 / 650
Laser Output Power, max (mW)	0.7	0.7	0.7 / 0.9
Operating Distance (m)	800	800	800 / 200
Aiming Dot Size (mm at 100m)	50	50	50
Overall Dimensions (mm/in)	110 x 67 x 39 / 4.3 x 2.6 x 1.5	110 x 67 x 39 / 4.3 x 2.6 x 1.5	110 x 67 x 39 / 4.3 x 2.6 x 1.5
Weight (g/oz)	198 / 7	220 / 7	220 / 7.7

Part NO.	Name
IAIR000LP000001	Drakos – IR Laser Pointer Class I with Quick Release Mount and Wireless Remote Control
IAIR001LP000001	Drakos-I – Dual Channel: IR 850 Laser Pointer Class I & IR LED 850 Illuminator with Quick Release Mount and Wireless Remote Control
IAIR002LP000001	Drakos-II – Dual Channel: IR 850 Laser Pointer Class I & Visible Red Laser Pointer Class II with Quick Release Mount and Wireless Remote Control

IR810 / IR850 IR810W / IR850W / IR940W

Long-Range Infrared Illuminators

Armasight's extra long-range infrared illuminators provide greater image-intensified viewing capabilities for operations in little to no ambient light.

Infrared illuminators are used in areas where the level of natural light is not sufficient. An IR illuminator provides near-infrared light, which, although invisible to the naked eye, can greatly enhance the performance of night vision devices. The illuminator features adjustments for field of view divergence and output power. Armasight long-range IR illuminators significantly extend capabilities of night vision weapon sights and observation devices.

Our IR810W, IR850W and 940W units provide wide-range beam angle adjustment from 2-20 degrees, which drastically improves the performance of the IR illuminator and extends the user's nighttime visibility range.

- Ⓐ **Powerful long range infrared illuminator**
- Ⓐ **Available in 810nm, 850nm and 940nm**
- Ⓐ **High power IR-emitting diode**
- Ⓐ **Precise adjustment of beam direction**
- Ⓐ **Power adjustment**
- Ⓐ **Angle adjustment**
- Ⓐ **W-versions are wide range beam angle adjustable**
- Ⓐ **Invisible to human eye**
- Ⓐ **Eye safe**
- Ⓐ **Lightweight and rugged**
- Ⓐ **Ideal aid for extreme low light conditions**
- Ⓐ **Mounts on the weaver rail or uses as handheld**
- Ⓐ **Limited two-year warranty**



IR Emitter Type	LED
Peak Wavelength (nm): IR810 / IR810W IR850 / IR850W IR940W	810 850 940
Compatible Night Vision Devices: IR810 / IR810W IR850 / IR850W IR940W	Gen1, CORE, Gen2, Gen3, Digital Gen2, Gen3 Digital
Illumination Range (m): IR810 / IR850 IR810W / IR850W	up to 300 up to 600
Divergence (°): IR810 / IR850 / IR940W IR810W / IR850W	8 to 12 2 to 30
Battery	Single CR123A (3V)
Battery Life at 20 °C / 68 °F (hr)	up to 10
Overall Dimensions with Mount (mm/in): IR810 / IR850 IR810W / IR850W / IR940W	117x41x37 / 4.6x1.6x1.4 120x42x38 / 4.7x1.7x1.5
Weight with Mount, w/o Battery (g/oz)	102 / 3.6

Part NO.	Name
IAIR810IR000001	IR810 Long Range Infrared Illuminator - Recommended for Gen 1+, CORE, Gen 2, Gen3 and Digital Night Vision Devices
IAIR850IR000001	IR850 Long Range Infrared Illuminator - Recommended for Gen2 and Gen 3 Night Vision Devices
IAIR810IR000002	IR810W Wide Angle Adjustable X-Long Range Infrared Illuminator - Recommended for Gen 1+, CORE, Gen 2, Gen3 and Digital Night Vision Devices
IAIR850IR000002	IR850W Wide Angle Adjustable X-Long Range Infrared Illuminator - Recommended for Gen2 and Gen3 Night Vision Devices
IAIR940IR000002	IR940W Wide Angle Adjustable X-Long Range Infrared Illuminator - Recommended for Digital Night Vision Devices - Special Order (check availability)



Important Export Restrictions

Commodities, products, technologies and services of this catalog are controlled by the U.S. Department of State's Directorate of Defense Trade Controls, in accordance with International Traffic in Arms (ITAR), Title 22, Code of Federal Regulations Part 120-130 and/or by the Export Administration Regulations (EAR) of U.S. Department of Commerce. At any time when a license or a written approval of the U.S. Government is applicable to it, it is illegal and strictly forbidden to export, intend to export, transfer in any other manner whatsoever, sell any hardware or technical data, provide any associated service to any non-U.S. person, beyond or within the United States territory, until the valid license or written approval has been issued by the Departments of the U.S. Government having jurisdiction. Additionally U.S. law prohibits the sale, transfer, or export of items to certain restricted parties, destinations, and embargoed countries, as identified on lists maintained by the U.S. Department of State, the U.S. Department of Commerce, and the U.S. Department of Treasury. It is the responsibility of the Customer to be aware of these lists. The sale, transfer, transportation, or shipment outside of the U.S. of any product prohibited or restricted for export without complying with U.S. export control laws and regulations, including proper export licensing, documentation or authorization, is unlawful and may result in civil and/or criminal penalties and/or constitute a federal crime. Diversion contrary to U.S. law is strictly prohibited.

www.armsight.com



Armasight Inc.

815 Dubuque Avenue
South San Francisco, CA 94080, USA
Phone: (888)959-2259, Fax: (888)959-2260
Intl Phone/Fax: (650)492-7755
info@armsight.com

International Sales & Export

Baseline Business Park
5032 S. Ash Avenue, Suite 108, Tempe, AZ 85282, USA
Phone: (480)907-6950, (480)907-6795, (480)907-6796
Fax: (480)393-4882
export@armsight.com