



WE THANK YOU FOR
CHOOSING THIS
PRODUCT FROM
SWAROVSKI OPTIK. IF YOU
HAVE ANY QUESTIONS,
PLEASE CONSULT YOUR
SPECIALIST DEALER OR
CONTACT US DIRECTLY AT
SWAROVSKIOPTIK.COM.

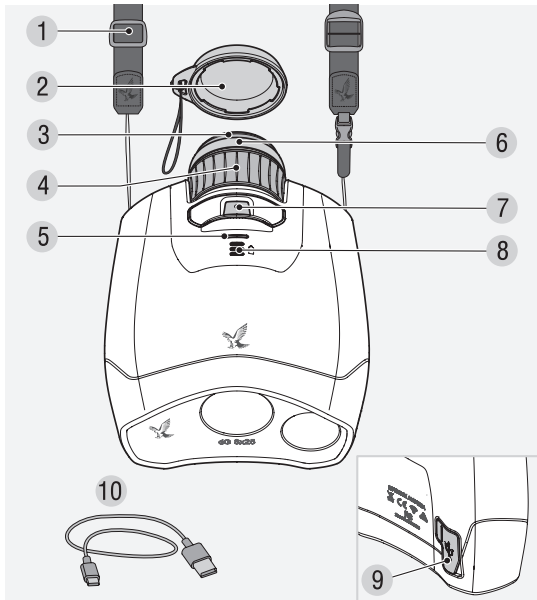
SPEND ONE MINUTE. EARN ONE YEAR

Register at [SWAROVSKIOPTIK.COM](https://www.swarovskioptik.com) to enjoy all the benefits of MY ACCOUNT.

- We will extend the warranty by one year, free of charge.*
- Keep track of all your SWAROVSKI OPTIK devices and purchase dates.
- If your product requires servicing, we can quickly call up the key information and ensure that we provide fast, efficient assistance.
- You can conveniently initiate repair orders for your registered products.

*When you register a product, we will extend its warranty in line with our warranty conditions by one year (warranty card also available for download). Electronics are excluded from the extended warranty.

1. OVERVIEW



- | | |
|-----------------------|--------------------------|
| 1 Side carrying strap | 6 Diopter adjusting ring |
| 2 Eyepiece cover | 7 Release button |
| 3 Twist-in eyecup | 8 Battery status LED |
| 4 Focusing wheel | 9 USB cover/plug |
| 5 Status LED | 10 USB-C charging cable |

Supplied as standard: field bag, cleaning cloth, Quick Guide

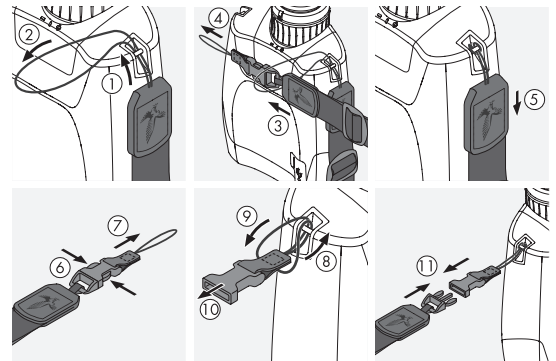
The carrying strap and eyepiece cover are not supplied mounted on the dG, but they can be fitted quickly and easily as required.

2. FITTING THE SIDE CARRYING STRAP & EYEPIECE COVER

The side carrying strap and eyepiece cover are not supplied mounted on the dG, but they can be fitted quickly and easily as required.

2.1 FITTING THE SIDE CARRYING STRAP

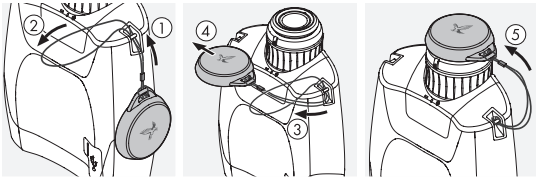
To attach the carrying strap to the dG, hold the side that does not have the click fastener and feed the loop through the loop holder on the right side of the dG (1+2). Then pull the other end of the carrying strap (3) through the loop (4) and tighten it (5).



On the other side, release the end of the clip mechanism (6+7) and feed the loop through the loop holder on the left side of the dG (8). Then pull the end through the loop (9), tighten it (10) and attach the clip to the other end of the side carrying strap (11).

2.2 FITTING THE EYEPIECE COVER

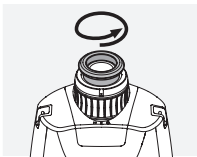
Feed the loop of the eyepiece cover through the loop holder on the right side of the dG (1+2). Then pass the cover through the loop (3) and tighten it (4). Now you can use the cover to protect the eyepiece (5).



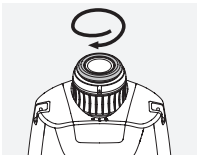
3. PREPARING TO USE THE DEVICE

Before you start using the instrument, please adjust the following settings:

3.1 ADJUSTING THE TWIST-IN EYECUP

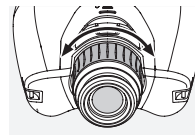


Pos. A: For use without glasses:
Turn the eyecups counterclockwise to the full extent.



Pos. B: For use with glasses:
Turn the eyecups clockwise as far as they will go.

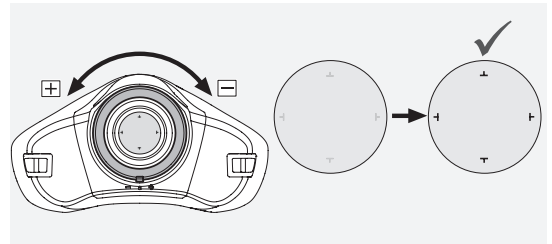
3.2 ADJUSTING THE FOCUS



Turning the focusing wheel allows you to focus on any object from the shortest focusing distance (see technical data sheet) to infinity.

3.3 DIOPTR ADJUSTMENT AND FOCUSING THE CAMERA

Adjust the diopter in order to obtain the best possible photo quality in terms of focus. Fine tune the sharpness of the reticle so that it is right for you by turning the diopter adjusting ring. First turn the diopter adjusting ring counterclockwise all the way to the left (+) from its initial position (marked on the ring, bottom center), then turn it clockwise to the right (-) until the reticle (black lines in the field of view) shows the optimum focus for you. The black markings on the reticle also delineate the section of the digital image that is guaranteed to be visible on the smartphone/tablet.



Note:

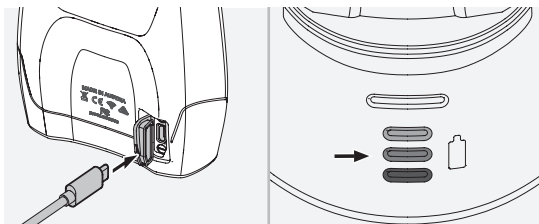
The adjustment works best if you look through the dG at a nearby, light-colored wall.

4. OPERATION

4.1 PLUGGING IN AND CHARGING THE BATTERY

For safety and transportation reasons, the battery is not supplied fully charged. Please charge it fully before using the device for the first time.

1. Connect the small plug on the USB charging cable to the USB-C connector on the dG.
2. Connect the large plug to a USB wall charger or other external power source (e.g. power bank) and the battery indicator will flash white (one to three lights depending on charge level). When the battery is fully charged (after about four hours if the battery was completely empty), all three battery status LEDs are permanently white. You can then remove the charging cable.

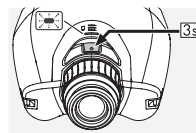


Note:

You can check the battery status when switched off by briefly pressing the release button.

4.2 SWITCHING ON & OFF

TO SWITCH ON: Press and hold the release button for at least three seconds and the status LED will blink orange. After approximately ten seconds, the status LED will blink green and emit a sound. Your dG is now ready to connect to a smartphone or tablet.



TO SWITCH OFF: Press and hold the release button for at least three seconds until the status LED goes out.

Note:

The battery status LED will remain lit up for about five seconds after you let go of the release button.

4.3 CONNECTING TO A SMARTPHONE/TABLET

The dG is ready to be connected to a smartphone/tablet when the status LED flashes green.



1. Download the dG app from the Apple App Store or Google Play Store and launch the app.
2. Activate the dG in your dG app either by scanning the QR code (on the packaging) or by entering the serial number (see section 5.1 Serial number). When using the dG app for the first time, please read and accept the terms of use in the dG app.

3. The smartphone/tablet establishes a Wi-Fi connection with the dG and the live stream is started.

4.4 CONNECTING TO MORE THAN ONE SMARTPHONE/TABLET

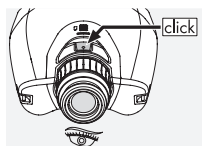
The dG app has to be installed on all devices in order to share the Live View with several people or devices (smartphones/tablets).

Once this is the case, then do the following:

1. Activate "Expert Mode" in the dG app settings and go to "Show QR Code to Connect."
2. A QR code is displayed. This can be scanned by other people by opening the dG app and selecting "Scan QR code."

3. Once the code has been scanned and accepted, Live View is activated and visible in the dG app. It can be transmitted on up to five devices.

4.5 TAKING A PHOTO



To take a photo, briefly press the release button once. Hold the device as still as possible while taking the picture, as taking and transmitting the photo involves a slight delay. The camera focuses during this time, then

an acoustic signal confirms the photo has been taken after 1 - 1.5 seconds. The image is then instantly transmitted to your smartphone/tablet.

Note:

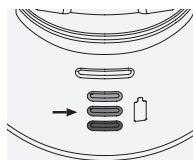
The dG can store up to ten images, provided there is an active Wi-Fi connection between the dG and the smartphone/tablet. If the connection to the dG app or another dG-compatible app is interrupted (e.g. because the app has been closed), up to ten images will be stored temporarily. As soon as the app is opened again, the images will be transferred to the app.

4.6 AUTOMATIC SWITCH-OFF

The dG switches itself off automatically after about five minutes if there is no active Wi-Fi connection to a smartphone/tablet. After 15 minutes of complete inactivity, the dG also switches itself off automatically.

4.7 BATTERY STATUS

You can check the battery status in switched-off mode by briefly pressing the release button. In switched-on mode, the battery status stays permanently lit up. Depending on the battery status, three (battery full) to one (battery low) LED lights go on. If the battery status falls below 10%, the status LED flashes red and a charge notification is displayed in the dG app. Once it drops below 5%, the dG switches off.



If the status LED blinks red and all 3 battery status LEDs flash, the battery is too low (<5%) and the device cannot be switched on (see section 4.9 Error messages). If the battery is completely discharged, the battery status LED no longer lights up. In this instance, please recharge the dG.

Note:

When the battery is completely discharged, all three battery status LEDs flash at the start of the charging process (for approx. one minute).

4.8 STATUS DISPLAYS

Status LED	What it means
Flashing orange	The dG has been switched on and is starting up
Flashing green	The dG is ready to be connected to a mobile device
Permanently green	The dG is connected to a smartphone/tablet
Alternating green/orange	The dG's memory is full (max. ten images) - open the dG app to transfer images
Flashing blue	Firmware update is in progress
Flashing red	Battery status low (<10%)

4.9 ERROR MESSAGES

Status LED	What it means
Alternating red/blue	Operating temperature too low (<20°C/-68°F)
Alternating red/orange	Operating temperature too high (battery >60°C/140°F or system >80°C/176°F)
Permanently red	Critical firmware error

Status LED + battery status LEDs	What it means
Status LED flashing red + all three battery status LEDs blinking	Battery status too low (<5%), device cannot be switched on. Please charge the dG.

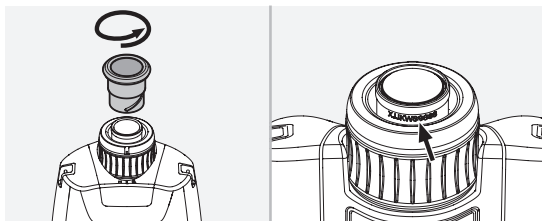
5. GENERAL INFORMATION

5.1 SERIAL NUMBER

The dG's serial number is located on the eyepiece under the twist-in eyecup. To read the serial number, unscrew the twist-in eyecup from the scope.

Note:

If for any reason you are no longer connected to your dG and do not have the QR code from the packaging to hand, you can reconnect using this serial number in the app under "Enter Serial Number."



5.2 TROUBLESHOOTING

Problem	Cause	Solution
The image doesn't fill the entire field of view (vignetting).	The eyecup setting is not correctly adjusted for viewing with or without glasses.	If you wear glasses, twist in the eyecup as far as it will go. If you do not wear glasses, unscrew the eyecup fully (see section 3.1 Adjusting the twist-in eyecup).
Videos or photos are not sharp.	You have not adjusted the diopter or the diopter adjusting ring has moved.	First turn the diopter adjusting ring counterclockwise all the way to the left (+), then clockwise to the right (-) until the black lines in the field of view show the optimum sharpness (see section 3.3 Diopter adjustment and focusing the camera).

Problem	Cause	Solution
Images are blurred or not sharp.	You moved the dG too quickly while observing.	Keep the device as still as possible while observing or taking photos, as there is a slight delay in taking and transmitting the image (see section 4.5 Taking a photo).
The video stream stops during transmission or the video is jerky.	The distance between the dG and the smartphone/tablet is too great; a poor signal or poor smartphone/tablet performance can interrupt the Wi-Fi connection during observation and recording.	Move the dG and smartphone/tablet closer together or reconnect to the Wi-Fi to restart the video stream.
No connection can be established with the dG.	Your smartphone or tablet is too far away from the dG.	Check that you are within optimum range of the dG (<5 m/16 ft) and that the dG is switched on [the status LED flashes green when it is ready to be connected].

5.3 ADDITIONAL INFORMATION



For more information, useful tips, and FAQs see the dG app or visit SWAROVSKIOPTIK.COM.

5.4 WHAT CAN THE APP DO?

- The mobile app allows you to explore the full potential of your dG.
- The app is free and is compatible with most Apple and Android™ systems.
- Connect to the internet and live stream what you see on your smartphone/tablet.

- Take pictures with the dG and send them to your smartphone/tablet via Wi-Fi.
- The app allows you to take videos and screenshots of your observations.
- Manage or share your observations (images, videos, snapshots) in the internal media gallery.
- Activate or deactivate a wide range of app functions in the settings menu.
- Activate expert mode in the menu to share your live stream with up to five other smartphones/tablets.
- Use expert mode to customize a wide range of camera settings.
- For more information about the functions and features of the dG app, visit our website or see the FAQs in the app.

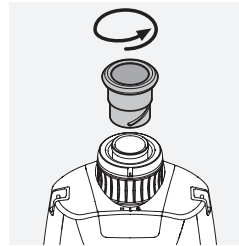
6. CARE AND MAINTENANCE

6.1 LENS-CLEANING CLOTH

With the included microfiber lens-cleaning cloth you can clean even the most sensitive glass surfaces. It is ideal for objective lenses, eyepieces, and eyeglasses. Please keep the cloth clean, as dirt can damage the lens surface. Simply wash it in lukewarm soapy water and leave to air dry. Please only use it for cleaning glass surfaces.

6.2 CLEANING

We have designed all the components and surfaces to be easy to clean. Maintain the outstanding performance of your dG by keeping the glass surfaces free from dirt, oil, and grease. To clean the optics, first brush off any larger particles of dirt using a lens brush. Then breathe gently on the lens and polish it with the lens-cleaning cloth to remove any remaining dirt. The housing is best cleaned with a soft, moist cloth (please do not use the lens-cleaning cloth for this).



If it is very dirty (e.g. with sand), the twist-in eyecup can be completely unscrewed, making it very easy to clean.

6.3 STORAGE

Store your dG in its bag in a well-ventilated place. If the dG gets wet, make sure you dry it out before stowing it away. In tropical areas or areas with high humidity, it is best to store it in an airtight container with a moisture-absorbing agent (e.g. silica gel).

7. SAFETY RECOMMENDATIONS

7.1 WARNING!

This product has a built-in, non-replaceable rechargeable battery. When using this product, please note the following:

- Do not continue to use the product if the outer casing is damaged or if you suspect the battery is damaged. In this case, contact our customer service immediately as there is a risk of explosion and/or accident.
- Charge the dG using the USB cable supplied and a suitable power supply that complies with local regulations or has FCC/CE/IC approval.

- If the battery leaks, make sure that the fluid does not come into contact with your skin or eyes. If this is the case, seek medical assistance.
- Do not expose products with batteries to excessive heat (e.g. direct sunlight, fire, etc.).
- Using damaged cables or chargers or charging in humid environments may cause electric shocks, fire, injury, or damage to the equipment or other property.
- DO NOT attempt to remove the rechargeable lithium-ion battery from this product. Contact SWAROVSKI OPTIK or a SWAROVSKI OPTIK dealer.

7.2 GENERAL INFORMATION

- Never look directly at the sun through the device as this could seriously damage your eyes.
- Never look through the device while walking as you may overlook obstacles.
- Protect your device against knocks.
- Repairs and servicing must only be carried out by SWAROVSKI OPTIK Absam (Austria) or SWAROVSKI OPTIK North America, otherwise your warranty will be void.
- Disconnect the power cord in the event of an electric storm or if you do not plan to use the instrument for some time.
- The battery life depends on conditions, environmental factors, features of the product being used, and the devices it is used with.
- Do not place the device near heat sources, such as radiators, storage heaters, stoves, or other appliances that produce heat.
- Make sure that the device is not covered during charging (blankets, pillows, etc.).
- Never attempt to force a connector into a port and never apply excessive pressure to a button as this may result in damage that is not covered by the warranty.

- The dG is splash-, water-, and dust-resistant and has been rated IP67 according to IEC Standard 60529 when tested under controlled laboratory conditions. Splash-, water- and dust-resistance is not a permanent condition and may deteriorate over time with normal use. Damage caused by liquids is not covered by the warranty.

7.3 COMPLIANCE

For more information on compliance, see:
http://swarovski.com/dg_compliance

WEEE/ElektroG



This symbol indicates that this product must not be disposed of with household waste in accordance with the WEEE (Waste Electrical and Electronic Equipment) Directive and national laws. This product must be disposed of at a designated collection point. For information on collection points for waste electrical and electronic equipment, contact your local authority or an authorized waste electrical and electronic equipment collection point. Correct disposal of this product protects the environment and prevents any potential damage to the environment and human health that may result from improper handling of the product.

Li-ion



The rechargeable lithium-ion battery should only be removed from this product by a specialist from SWAROVSKI OPTIK. For further information, please contact your local SWAROVSKI OPTIK dealer or SWAROVSKI OPTIK Customer Service
https://at.swarovskioptik.com/customer_service.

Declaration on legal requirements in Canada

This instrument complies with the RSS standard(s) as issued by Innovation, Science, and Economic Development Canada, or its license-exempt standards. Its operation is subject to the following two conditions: (1) this device may not cause interference, and (2) this device must accept any interference, including interference that may cause undesired operation of the device.

MERCI D'AVOIR CHOISI
CE PRODUIT DE LA
MAISON SWAROVSKI
OPTIK. POUR TOUTE
QUESTION ADRESSEZ-VOUS
A VOTRE DETAILLANT
OU CONTACTEZ-NOUS
DIRECTEMENT SUR
SWAROVSKIOPTIK.COM.

All the specifications given are typical values.

We reserve the right to make changes regarding design and delivery.
We accept no liability for printing errors.