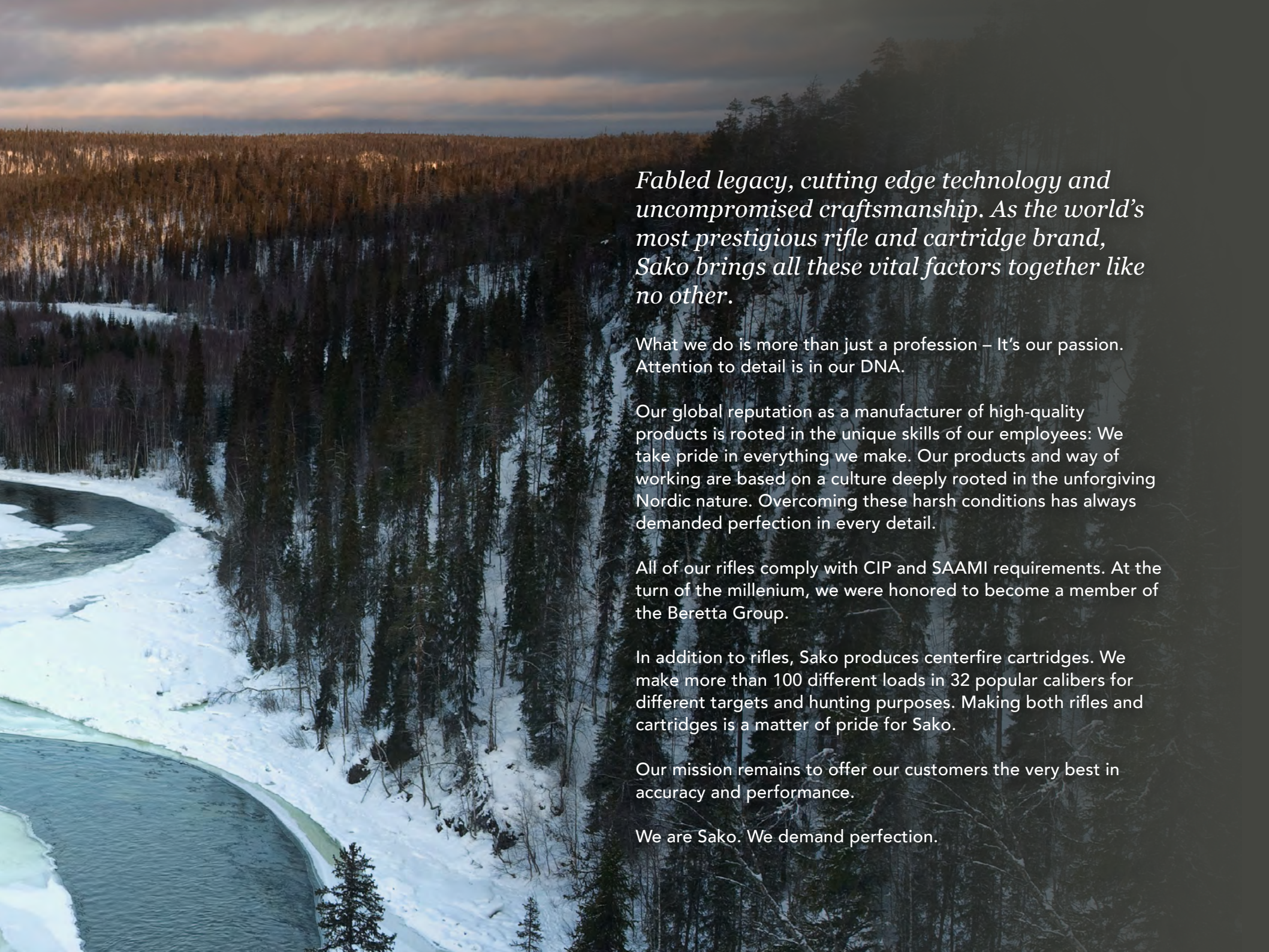




sako
demand perfection





Fabled legacy, cutting edge technology and uncompromised craftsmanship. As the world's most prestigious rifle and cartridge brand, Sako brings all these vital factors together like no other.

What we do is more than just a profession – It's our passion. Attention to detail is in our DNA.

Our global reputation as a manufacturer of high-quality products is rooted in the unique skills of our employees: We take pride in everything we make. Our products and way of working are based on a culture deeply rooted in the unforgiving Nordic nature. Overcoming these harsh conditions has always demanded perfection in every detail.

All of our rifles comply with CIP and SAAMI requirements. At the turn of the millenium, we were honored to become a member of the Beretta Group.

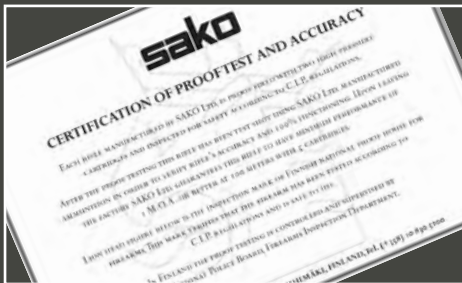
In addition to rifles, Sako produces centerfire cartridges. We make more than 100 different loads in 32 popular calibers for different targets and hunting purposes. Making both rifles and cartridges is a matter of pride for Sako.

Our mission remains to offer our customers the very best in accuracy and performance.

We are Sako. We demand perfection.

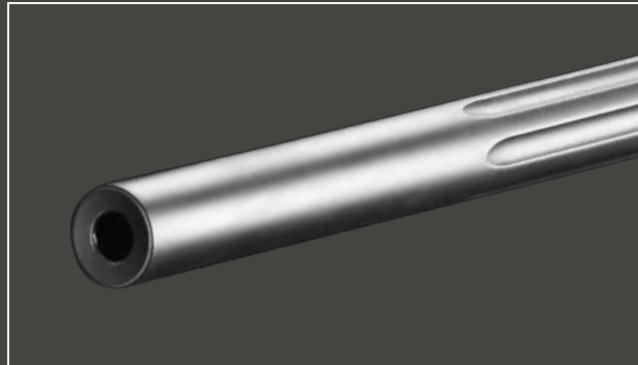
INDIVIDUALLY PERFECT

Sako 85 rifles are built with demanding design criteria, based on tradition and innovation, allowing you to choose between different models for the given hunting or training purpose. The Sako 85 series offers several stock styles and barrel options. These options, combined with a comprehensive caliber selection, will give you the ultimate bolt-action rifle. When you buy a Sako, you're buying a high-quality rifle that has undergone thorough quality assessments that ensure its lasting value from father to son.



CERTIFICATION OF PROOF TEST AND ACCURACY

We value our customers. To guarantee the best possible performance of all Sako rifles, we test each individual rifle for quality assurance. We do not guess or assume – we test. Each rifle is delivered with a certification that guarantees its quality and accuracy.



BARREL

Sako 85 barrels are manufactured with a passion for craftsmanship and the very best knowledge of Sako. Barrel blanks are drilled, honed, cold-hammer forged, finished and finally individually inspected by an optical fine-tuning instrument: the human eye. Twist rates are chosen for each caliber to optimize accuracy and bullet performance. Sako 85 barrels, blued or stainless, have a non-reflecting, satin-like surface – with the exception of the Sako 85 Deluxe and Safari models that have a highly polished finish.



BOLT

Sako 85 bolt body is constructed from forged solid steel blank. One piece bolt body is machined from a blank so that it includes the bolt handle. This uniform construction is extremely rigid and robust.



EXTRACTOR & EJECTION

The Sako 85 has a famous extractor claw made of durable heat-treated steel. When the bolt forces the case back, the mechanical ejector fork ejects the case out of the rifle. The ejector is at the bottom of the rear bridge, not on the bolt face.



STOCK

The ergonomics of Sako 85's walnut and synthetic stocks are built for an optimal shooting posture. The excellent balance and smooth bolt operation of Sako 85 rifles enable fast, straight and accurate operation.



MAGAZINE

The staggered, two-row magazine of the Sako 85 is made of stainless steel. The detachable magazine can also be loaded through the ejection port. The Total Control Latch (patent pending) of the Sako 85 prevents accidental magazine release.



TRIGGER

The weight of pull of the single-stage Sako 85 trigger unit is adjustable from 1 to 2 kg (2–4 lbs). An optional single-set trigger is available for most Sako 85 models. All Sako 85 rifles have an extremely durable, all-steel trigger guard that protects the trigger. An exception to this are the Finnlight and Carbonlight models, which have a lightweight hard-anodized aluminium trigger guard.



SAFETY

The special two-way Sako safety locks both the trigger and the bolt handle. The unique bolt release button of the Sako Safety System allows you to load or remove a cartridge from the chamber while the safety is engaged.



ACTION

Sako 85 actions come in six different sizes (CSA), providing reliability for each caliber. All Sako 85 models feature controlled cartridge feed (RCS) to eliminate double feed or cartridge jams. The turn-bolt handle places the hand in a natural position during bolt operation, which allows for rapid repeated firing.

SPECIFICATIONS

Throughout the brochure, these icons provide you with key technical information at a glance.

S, SM,
M & L

Action size

1030-1145
mm

Total length

510, 620
mm

Barrel length

2.8-3.1
kg

Overall weight

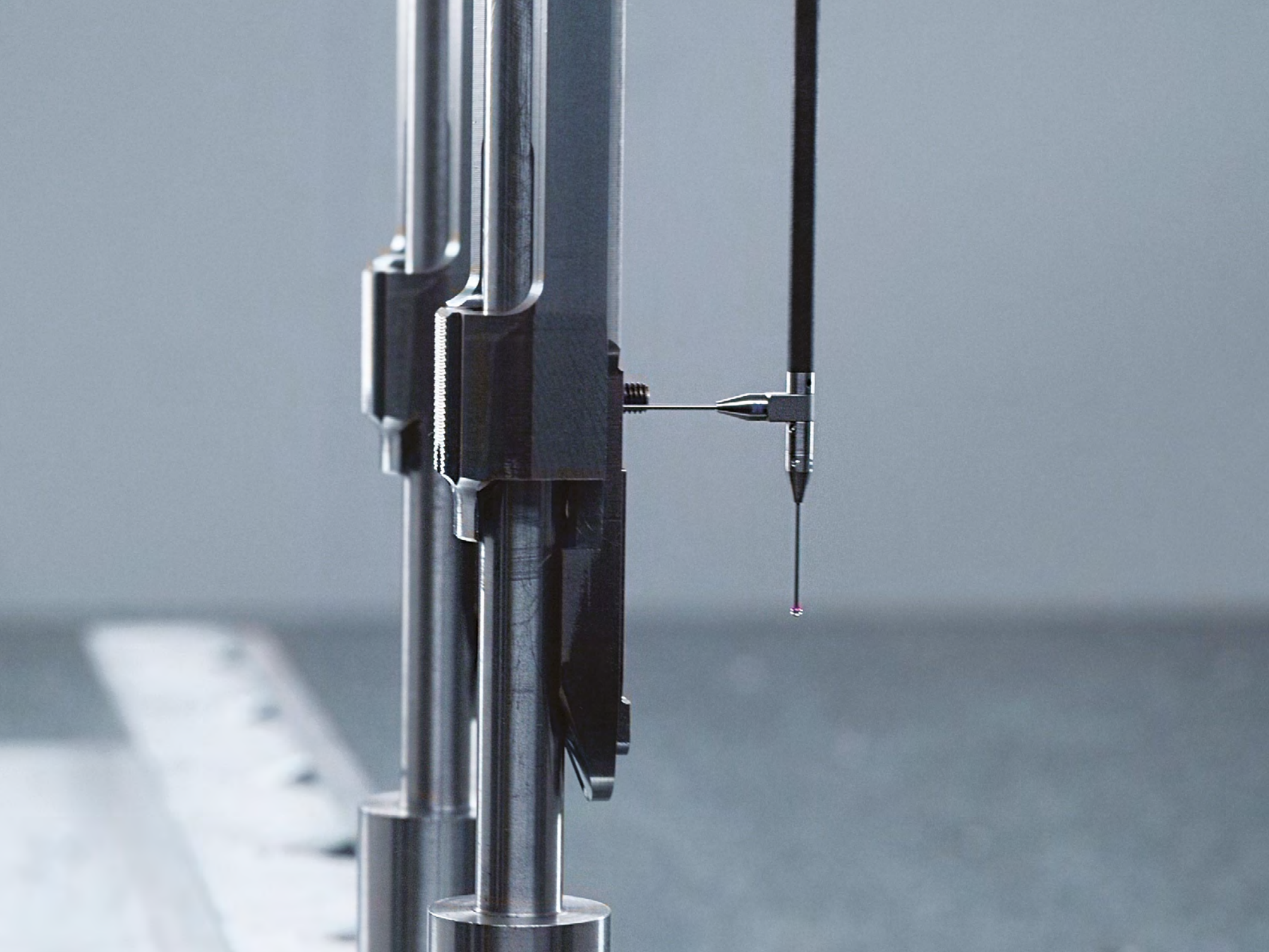


Available as
left-handed



Interchangeable
barrel

Most Sako models feature set trigger, open sights and muzzle threading as options. Check availability with your local retailer.

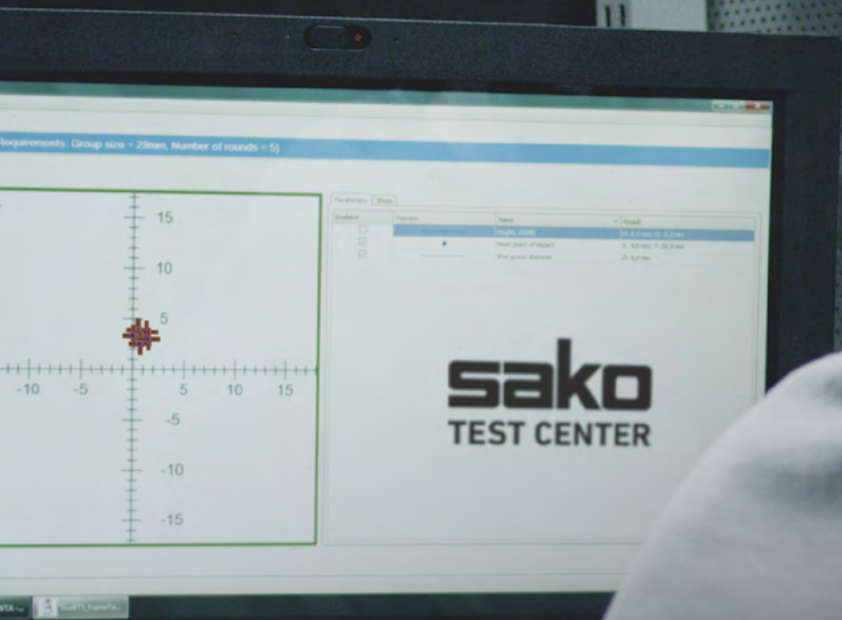




Sako's history goes back to the early 1920s. Since then, we've come a long way from manufacturing by hand to today's computer-aided R&D and CNC manufacturing. And yet, we have not forgotten the value of traditional gunsmith craftsmanship.



At Sako, we take great pride in our work. Each rifle is carefully assembled by a single person, and each individual barrel is visually inspected. Every rifle goes through manual accuracy testing to ensure that the rifle can perform under 1MOA accuracy.



SHOT M.O.A
Guaranteed





NEW

85 FINNLIGHT II

Experience an icon reborn

Enjoy ease of use and comfort for each shot with a lightweight fiberglass stock produced with cutting edge RTM technology. The Sako 85 Finnligh 2 has been treated with a weather resistant Cerakote® coating and is equipped with a fully adjustable cheek piece, making the rifle adaptable and ready for any challenge.

Read more at www.sako.fi



**S, SM,
M & L**

Action size

**1030-1145
mm**

Total length

**510, 620
mm**

Barrel length

**2.8-3.1
kg**

Overall weight



Available as
left-handed

CALIBER / RATE OF TWIST:

5+1 magazine: 22-250 Rem / 14" | 243 Win / 10" | 260 Rem / 8" |
6.5 Creedmoor / 8" | 7mm-08 Rem / 9.5" | 308 Win / 11" | 25-06 Rem / 10" |
6.5x55 SE / 8" | 270 Win / 10" | 30-06 Spr / 11"

4+1 magazine: 270 Win Short Mag / 10" | 300 Win Short Mag / 11" |
7mm Rem Mag / 9.5" | 300 Win Mag / 11"



FULLY ADJUSTABLE CHEEK PIECE

Easily customized to suit your individual preferences.



CERAKOTE® COATING

The coating ensures reliable performance in all conditions.



SECURE GRIP

The grip surfaces and the cheek piece are made from elastomer.

NEW

85 CARBON WOLF

Tailormade for accuracy

Experience a rifle made for hunters who value the flexibility and adaptability of being able to effortlessly make ergonomic adjustments. The 85 Carbon Wolf can quickly be configured for the range or for a variety of different hunting purposes. It's built to allow you to hit hard and fast while trekking through the wild. The RTM carbon fiber construction ensures lightness and durability.

Get more info at www.sako.fi



S, M & L

Action size

**1 010 - 1 140
mm**

Total length

**510, 620
mm**

Barrel length

**3.3-3.5
kg**

Overall weight

CALIBER / RATE OF TWIST:

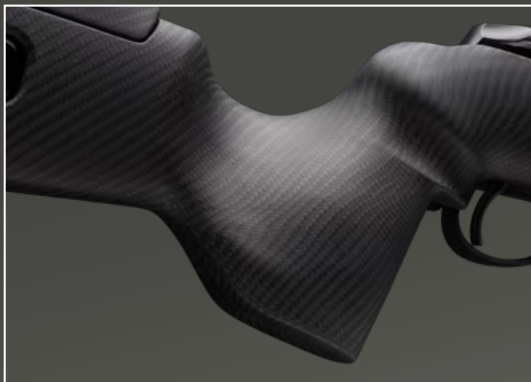
5+1 magazine: 22-250 Rem / 14" | 243 Win / 10" | 260 Rem / 8" | 7mm-08 Rem / 9.5" | 308 Win / 11" | 6.5 Creedmoor / 8" | 25-06 Rem / 10" | 6.5x55 SE / 8" | 270 Win / 10" | 30-06 Spr / 11" | 8x57IS / 9.5" | 9.3x62 / 14"

4+1 magazine: 7mm Rem Mag / 9.5" | 300 Win Mag / 11"



ADJUSTABLE CHEEK PIECE & LENGTH OF PULL

The cheek piece & length of pull can be easily adjusted to best suit you via the control buttons on the rear stock.



PISTOL GRIP

The ergonomic pistol grip gives you a natural and relaxed grip.



DOUBLE SLING-STUDS

Effortlessly carry the Sako 85 Black Wolf with a bipod whenever needed.

85 BLACK WOLF

This is the rifle for hunters who value the flexibility and adaptability of being able to make ergonomic adjustments. This modern rifle can quickly be configured for the range or for different hunting purposes. A broad stock provides a solid platform for shooting without a bipod. And with double sling studs in the fore-end, you can carry the Sako 85 Black Wolf with a bipod if needed.



REAR STOCK AND PISTOL GRIP

Fast, button adjustable length of pull and cheek piece height. Top ergonomic pistol grip provides a natural and relaxed grip.

S, M & L

Action size

1010-1140
mm

Total length

510, 620
mm

Barrel length

4.0-4.2
kg

Overall weight

CALIBER / RATE OF TWIST:

5+1 magazine: 22-250 Rem / 14" | 243 Win / 10" | 260 Rem / 8" | 7mm-08 Rem / 9.5" | 308 Win / 11" | 6.5 Creedmoor / 8" | 25-06 Rem / 10" | 6.5x55 SE / 8" | 270 Win / 10" | 30-06 Spr / 11" | 8x57IS / 9.5" | 9.3x62 / 14"

4+1 magazine: 7mm Rem Mag / 9.5" | 300 Win Mag / 11"

85 CARBONLIGHT

The Sako 85 Carbonlight is a high-end rifle designed for gear-oriented enthusiasts who are after any type of game. This ultra-light multi-purpose hunting rifle features a carbon fiber stock with a soft-touch surface, a right-hand palm swell and a cheek piece. With an approximate weight of only 2.4 kg, the Sako 85 Carbonlight with S-action or the new XS-action is exceptionally comfortable to carry, even on long treks. You can also pick a left-handed option and different action lengths, including M-action.



MUZZLE BRAKE

Carbonlight in L action size calibers are delivered with a separately packed muzzle brake.



TECHNOLOGY

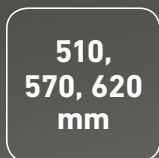
The Sako 85 Carbonlight rifle is built using the same CFRP technology that is used in both car and aerospace industries. This makes it extremely light, durable and rigid, resulting in a one-of-a-kind rifle.



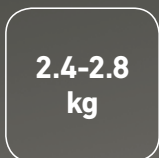
Action size



Total length



Barrel length



Overall weight



Available as left-handed

CALIBER / RATE OF TWIST:

6+1 magazine: 223 Rem / 8"

5+1 magazine: 22-250 Rem / 14" | 243 Win / 10" | 260 Rem / 8" | 7mm-08 Rem / 9.5" | 308 Win / 11" | 6.5 Creedmoor / 8" | 25-06 Rem / 10" | 6.5x55 SE / 8" | 270 Win / 10" | 7x64 / 10" | 30-06 Spr / 11" | 8x57IS / 9.5" | 9.3x62 / 14" | 7mm Rem Mag / 9.5" | 300 Win Mag / 11"

85 SAFARI

The Sako 85 Safari is a bolt-action rifle made for the most demanding hunters. Each Safari rifle has a hand polished barrelled action. This rifle features epoxy-bedding for the best and most durable fit and accuracy. The stock is made from high-grade walnut featuring detailed rosewood fore end cap and grip cap.



PREMIUM STOCK

The classic appearance of the handmade Safari stock is finished off with a custom-made Pachmayr recoil pad. The high-grade walnut stock features traditional hand-cut checkering and the fore-end tip and pistol grip cap are made of ebony.

L & XL

Action size

1145-1150
mm

Total length

620
mm

Barrel length

4.1-4.5
kg

Overall weight

CALIBER / RATE OF TWIST:

5+1 magazine: 375 H&H Mag / 12"

4+1 magazine: 416 Rigby / 14" | 450 Rigby / 14" | 500 Jeffery / 20"

Equipped with a hinged floorplate magazine

85 CLASSIC DELUXE

The Sako 85 Classic Deluxe combines a highly polished metal finish with a world-class stock design. The high-grade walnut stock offers a palm swell and a traditional cheek piece to guarantee an ergonomic shooting posture in rapid hunting situations. This rifle has been designed for the hunter who appreciates the look and feel of a high-quality walnut stock combined with the Sako 85 action.



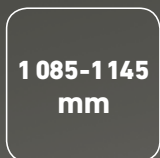
CLASSIC DESIGN

The 85 Classic Deluxe has a classic cheek piece, a pronounced pistol grip and a barrel band for swivel attachment.



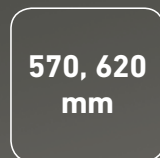
M & L

Action size



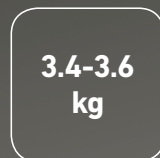
1 085-1145
mm

Total length



570, 620
mm

Barrel length



3.4-3.6
kg

Overall weight

CALIBER / RATE OF TWIST:

5+1 magazine: 270 Win / 10" | 7x64 / 10" | 30-06 / 11" | 9.3x66 Sako / 14"

4+1 magazine: 375 H&H Mag / 12"

Equipped with a hinged floorplate magazine

85 DELUXE

The traditional Sako 85 Deluxe combines an attractive, timeless appearance with superior Sako accuracy and reliability. The warmth of the high-grade walnut stock, rosewood details and classic checkering give this fine rifle its distinctive look. Highly polished metal parts, fixed magazine and the Sako pistol grip inlay are just a few of the custom features of this elegant rifle.



FINE DETAILS

The design of the 85 Deluxe focuses on fine details. A golden color is embedded in the trigger next to polished deep black steel surfaces – the perfect design for a Deluxe look.

M

Action size

1085
mm

Total length

570
mm

Barrel length

3.3
kg

Overall weight

CALIBER / RATE OF TWIST:

4+1 magazine: 25-06 Rem / 10" | 6.5x55 SE / 8" | 270 Win / 10" | 7x64 / 10" | 30-06 / 11" | 8x57IS / 9.5" | 9.3x62 / 14" | 9.3x66 Sako / 14"

Equipped with a hinged floorplate magazine

85 CLASSIC

The Sako 85 Classic comes with the traditional Sako features: a straight and classic oil-finished walnut stock with a rosewood fore-end and butt; a strong extended recoil lug, fastened inside the fore-end; and an integral tapered scope mount rail on the top of the receiver and a free-floating barrel. The classic look and feel enhances the experience of owning one of the world's most respected rifles.



**S, SM,
M & L**

Action size

**1 075-1145
mm**

Total length

**570, 620
mm**

Barrel length

**3.2-3.5
kg**

Overall weight

CALIBER / RATE OF TWIST:

5+1 magazine: 243 Win / 10" | 7mm-08 Rem / 9.5" | 308 Win / 11" | 25-06 Rem / 10" | 6.5x55 SE / 8" | 270 Win / 10" | 30-06 / 11" | 8x57IS / 9.5" | 9.3x66 Sako / 14"

4+1 magazine: 270 Win Short Mag / 10" | 300 Win Short Mag / 11" | 7mm Rem Mag / 9.5" | 300 Win Mag / 11" | 338 Win Mag / 10" | 375 H&H Mag / 12"

85 BAVARIAN

The Sako 85 Bavarian is a masterpiece combining a high-grade walnut stock in a Central European tradition with the superior performance and technology of the Sako 85 series.

Under its traditional exterior lie new modern features of the Sako 85 action.

The Sako 85 Bavarian is also available as a left-handed version.



BAVARIAN STOCK DESIGN

The oil-finished walnut stock also features a Schnabel-type fore-end and a pistol grip cap in rosewood. The classic checkering pattern of the Sako 85 Bavarian provides both functionality and traditional looks. Other characteristics of this classic model are the Bavarian cheek piece and comb.

**XS, S, SM
M & L**

Action size

**1015-1145
mm**

Total length

**510,
570, 620
mm**

Barrel length

**2.9-3.5
kg**

Overall weight



Available as
left-handed

CALIBER / RATE OF TWIST:

6+1 magazine: 222 Rem / 14" | 223 Rem / 8" | 223 Rem / 12"

5+1 magazine: 22-250 Rem / 14" | 243 Win / 10" | 260 Rem / 8" | 7mm-08 Rem / 9.5" | 308 Win / 11" | 25-06 Rem / 10" | 6.5x55 SE / 8" | 270 Win / 10" | 7x64 / 10" | 30-06 / 11" | 8x57IS / 9.5" | 9.3x62 / 14"

4+1 magazine: 270 Win Short Mag / 10" | 300 Win Short Mag / 11" | 7mm Rem Mag / 9.5" | 300 Win Mag / 11" | 338 Win Mag / 10" | 375 H&H Mag / 12"

85 BAVARIAN CARBINE

The Sako 85 Bavarian Carbine is developed for hunters who appreciate a high-quality carrying hunting rifle made of beautiful walnut and black steel. The Sako 85 Bavarian Carbine always comes with adjustable iron sights and a single set trigger.



FULL STOCK

The traditional full-length stock features a rosewood Schnabel.

BAVARIAN STOCK DESIGN

The classic checkering pattern of the Sako 85 Bavarian provides functionality and traditional looks. Other characteristics of this classic model are the Bavarian cheek piece and comb.



S & M

Action size

1015-1025
mm

Total length

510
mm

Barrel length

3.1-3.2
kg

Overall weight

CALIBER / RATE OF TWIST:

5+1 magazine: 22-250 Rem / 14" | 243 Win / 10" | 260 Rem / 8" | 7mm-08 Rem / 9.5" | 308 Win / 11" | 25-06 Rem / 10" | 6.5x55 SE / 8" | 270 Win / 10" | 7x64 / 10" | 30-06 / 11" | 8x57IS / 9.5" | 9.3x62 / 14"





BEAR SERIES

The Grizzly, Black Bear, Brown Bear and Kodiak are purpose-oriented weapons for bear hunters. All four Bear models feature adjustable fast target acquisition iron sights and a detachable staggered two-row steel magazine with the Total Control Latch, preventing unintentional magazine release. Bear series rifles can be top-loaded and have controlled cartridge feed, an adjustable single stage trigger and a barrel band for front swivel – plus mechanical case ejection. They are also equipped with integral dovetail rails for secure scope mounting.

85 GRIZZLY

The Sako 85 Grizzly adds prestige to the Sako Bear Series. Its high-grade walnut stock, medium-contour fluted barrel and blued action give it an elegant appearance and make it a pleasure to handle.



SIGHTS AND BARREL

The 85 Grizzly has rapid target acquisition iron sights with a full rear sight line and bead, and a fluted barrel with a swivel band.

S & M

Action size

**1045-1055
mm**

Total length

**540
mm**

Barrel length

**3.5-3.6
kg**

Overall weight

CALIBER / RATE OF TWIST:

5+1 magazine: 308 Win / 11" | 7x64 / 10" | 30-06 / 11" |
8x57IS / 9.5" | 9.3x62 / 14" | 9.3x66 Sako / 14"

85 BLACK BEAR

The Sako 85 Black Bear has a medium-contour fluted barrel, a matte black stock with soft grip surfaces and blued action and barrel. Its lightweight, compact size and good weather resistance mean it's a perfect choice for the active hunter. The Sako 85 Black Bear is extremely well balanced, making it ideal for situations that require rapid action.



SIGHTS AND BARREL

The 85 Black Bear has rapid target acquisition iron sights with a full rear sight line and bead, and a fluted barrel with a swivel band.

S & M

Action size

**1015-1025
mm**

Total length

**510
mm**

Barrel length

**3.1-3.2
kg**

Overall weight

CALIBER / RATE OF TWIST:

5+1 magazine: 308 Win / 11" | 30-06 / 11" | 8x57IS / 9.5" | 9.3x62 / 14" | 9.3x66 Sako / 14"

85 BROWN BEAR

The Brown Bear is also available in action size XL. This extends the caliber selection of the Bear series to include 416 Rigby, 450 Rigby and 500 Jeffery. The laminate stock has been redesigned to accommodate larger calibers, while the barrel profile has been redefined for the new calibers.



L & XL

Action size

**1065-1085
mm**

Total length

**540, 560
mm**

Barrel length

**3.6-4.3
kg**

Overall weight

CALIBER / RATE OF TWIST:

3+1 magazine: 338 Win Mag / 10" | 375 H&H Mag / 12" | 416 Rigby / 14" | 450 Rigby / 14" | 500 Jeffery / 20"

Equipped with a hinged floorplate magazine in XL action size

85 KODIAK

The Sako 85 Kodiak was designed with a true hunter in mind. The straight, weatherproof stock is made of grey laminated hardwood and reinforced with two cross-bolts. The short, free-floating medium contour barrel features adjustable open sights and a band-type front swivel. The barrel is cold hammer-forged using high-grade alloy stainless steel. The bolt, receiver and detachable magazine are also made of stainless steel, and provide reliability even under severe weather conditions.



L

Action size

1065
mm

Total length

540
mm

Barrel length

3.6
kg

Overall weight

CALIBER / RATE OF TWIST:

3+1 magazine: 338 Win Mag / 10" | 375 H&H Mag / 12"

The Sako 85 rifle range includes several models and covers a wide caliber range. Dedicated hunters have two decisions to make:

Deciding on buying a Sako rifle is easy. The second decision – choosing the right model – is tougher. Read on and find out which model is right for you.





85 HUNTER & HUNTER STAINLESS

Calling the Sako 85 Hunter a standard is a serious understatement. It comes with world-class Sako features, including the legendary Sako accuracy, smooth bolt operation and perfect balance, making it a valued rifle to both own and to shoot. The Sako 85 Hunter features a walnut stock and is available with blued or stainless metal parts. Optional iron sights are available for the blued barrel.



**XS, S, SM
M & L**

Action size

**1005-1145
mm**

Total length

**510,
570, 620
mm**

Barrel length

**2.8-3.5
kg**

Overall weight



Available as
left-handed

CALIBER / RATE OF TWIST:

6+1 magazine: 204 Ruger / 12" | 222 Rem / 14" | 223 Rem / 8" | 223 Rem / 12"

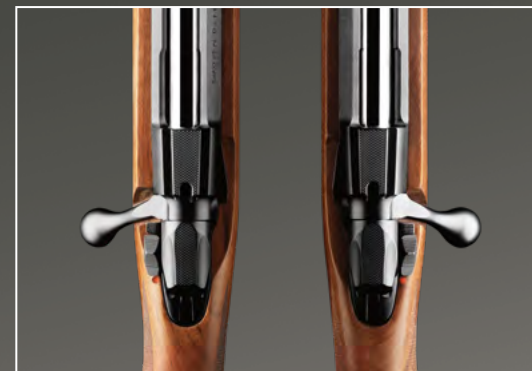
5+1 magazine: 22-250 Rem / 14" | 243 Win / 10" | 260 Rem / 8" | 7mm-08 Rem / 9.5" | 308 Win / 11" | 25-06 Rem / 10" | 6.5x55 SE / 8" | 270 Win / 10" | 7x64 / 10" | 30-06 / 11" | 8x57IS / 9.5" | 9.3x62 / 14" | 9.3x66 Sako / 14"

4+1 magazine: 270 Win Short Mag / 10" | 300 Win Short Mag / 11" | 7mm Rem Mag / 9.5" | 300 Win Mag / 11" | 338 Win Mag / 10" | 375 H&H Mag / 12"



AVAILABLE AS LEFT-HANDED

Left-handed shooters and hunters now have the option of choosing from the S, M and L action size calibers as well.



85 LAMINATED STAINLESS

The Sako 85 Laminated Stainless rifle has a high-grade stainless steel barrel, receiver and bolt. The grey matte-lacquered laminated hardwood stock provides a stable platform that withstands even the toughest conditions. The straight grey stock and stainless hardware of the Sako 85 Laminated Stainless is matched with silver-grey scope mounts, making it one of the world's most distinctive hunting rifles.



**XS, S, SM,
M & L**

Action size

**1005-1145
mm**

Total length

**510,
570, 620
mm**

Barrel length

**2.9-3.6
kg**

Overall weight

CALIBER / RATE OF TWIST:

6+1 magazine: 204 Ruger / 12" | 222 Rem / 14" | 223 Rem / 8" | 223 Rem / 12"

5+1 magazine: 22-250 Rem / 14" | 243 Win / 10" | 260 Rem / 8" | 7mm-08 Rem / 9.5" | 308 Win / 11" | 25-06 Rem / 10" | 6.5x55 SE / 8" | 270 Win / 10" | 30-06 / 11" | 9.3x62 / 14"

4+1 magazine: 270 Win Short Mag / 10" | 300 Win Short Mag / 11" | 7mm Rem Mag / 9.5" | 300 Win Mag / 11" | 338 Win Mag / 10" | 375 H&H Mag / 12"

85 FINNLIGHT

The Sako 85 Finnligh rifle is for those who foray deep into the wild to reach their goal. Hunters on mountain trails or on long-distance treks prefer high-performance rifles that are full-sized, yet still lightweight. The fluted barrel of the Finnligh is just one of the many features that make it ideal for the hunter seeking a perfectly trimmed light rifle. The Sako 85 Finnligh is also an excellent choice for women and younger shooters.



STOCK

Sako 85 Finnligh has a reinforced black polymer stock with a soft grey pattern on its grip surfaces and a Soft Touch surface treatment.

**S, SM, M
& L**

Action size

**1030-1125
mm**

Total length

**515,
570, 620
mm**

Barrel length

**2.8-3.1
kg**

Overall weight

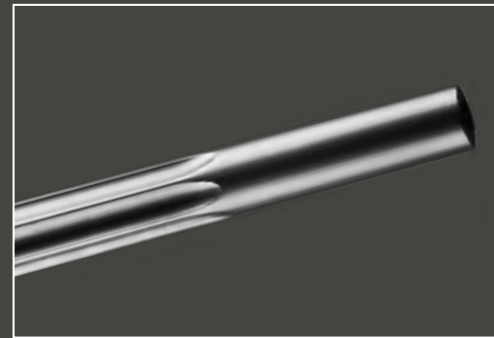
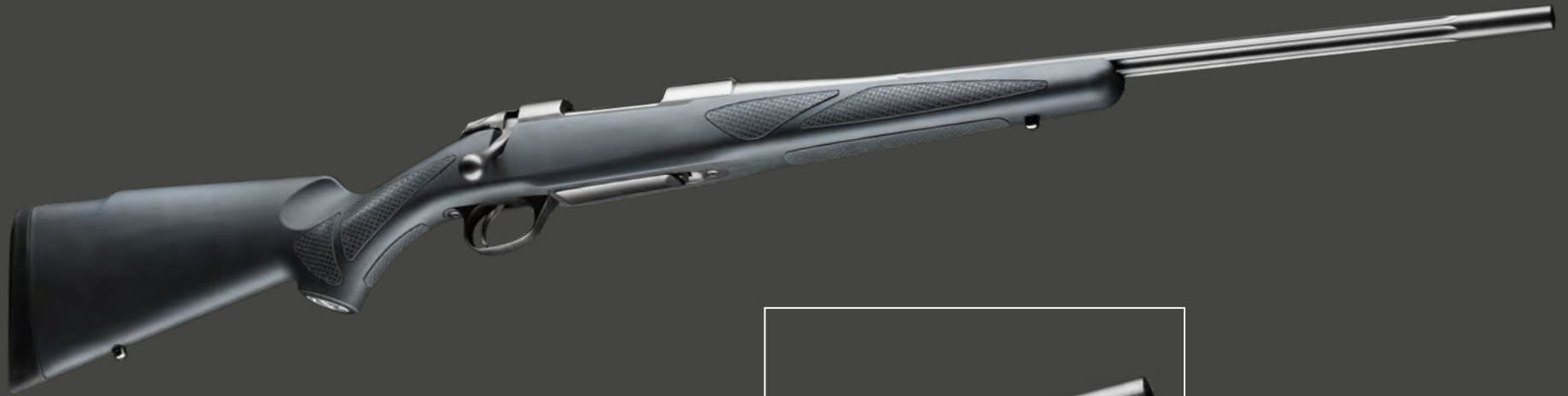
CALIBER / RATE OF TWIST:

5+1 magazine: 22-250 Rem / 14" | 243 Win / 10" | 260 Rem / 8" | 7mm-08 Rem / 9.5" | 308 Win / 11" | 25-06 Rem / 10" | 6.5x55 SE / 8" | 270 Win / 10" | 30-06 / 11"

4+1 magazine: 270 Win Short Mag / 10" | 300 Win Short Mag / 11" | 7mm Rem Mag / 9.5" | 300 Win Mag / 11"

85 SYNTHETIC BLACK

The Sako 85 Synthetic rifle offers hunters and shooters a completely matte black-finished option. The barrel, action, magazine plate and trigger guard are all matching in color with a Soft Touch color-coated stock. If you are looking for true stealth appearance, this is the rifle for you.



BLACK FLUTED BARREL

The Sako 85 Synthetic Black comes with a matte black fluted barrel.

S & M

Action size

**1085
mm**

Total length

**570
mm**

Barrel length

**2.8-2.9
kg**

Overall weight

CALIBER / RATE OF TWIST:

5+1 magazine: 308 Win / 11" | 6.5x55 SE / 8" | 270 Win / 10" | 7x64 / 10" | 30-06 / 11"

85 SYNTHETIC STAINLESS

The Sako 85 Synthetic Stainless is one of our most popular rifles, as it is effortless to operate and has the firmest hold you'll ever experience. Black grip areas against the black satin-like stock create a stunning profile. The stainless steel barrel and receiver are non-reflective, and are highly durable in any weather conditions.



STOCK

The stock features a cheek piece and an asymmetric palm swell, black gripping surfaces, and it has undergone a Soft Touch surface treatment.

**S, SM,
M & L**

Action size

**1015-1145
mm**

Total length

**510,
570, 620
mm**

Barrel length

**2.8-3.2
kg**

Overall weight

CALIBER / RATE OF TWIST:

5+1 magazine: 22-250 Rem / 14" | 243 Win / 10" | 260 Rem / 8" | 7mm-08 Rem / 9.5" | 308 Win / 11" | 338 Federal / 10" | 25-06 Rem / 10" | 6.5x55 SE / 8" | 270 Win / 10" | 30-06 / 11" | 8x57IS 9.5" | 9.3x62 / 14" | 9.3x66 Sako / 14"

4+1 magazine: 300 Win Short Mag / 11" | 7mm Rem Mag / 9.5" | 300 Win Mag / 11" | 338 Win Mag / 10" | 375 H&H Mag / 12"

Long range hunting is extremely demanding. There is no room for compromises when you are shooting game from extreme distances: your rifle and other gear have to be match grade in order to guarantee a vital area hit. The Sako 85 Long Range rifle has been designed to overcome any challenges you may face.

The Sako 85 Varmint rifles are the perfect tool for targeting smaller marks, often, with the help of a large objective and a rest under the weapon. For this purpose, these rifles boast a heavy barrel, a single-set trigger, a pronounced pistol grip and a flat fore-end bottom.





STEINER
GERMANY

NIGHT

8
7
6
5

85 VARMINT

The Sako 85 Varmint rifle is a long range hunting rifle for small to medium game, built to deliver pinpoint accuracy for hunting and target shooting. The heavy, free-floating barrel diminishes vibration and recoil, which makes it easy to zoom in and stay on target. The Varmint rifle stock is made of walnut, enhancing both comfort and accuracy. In addition, it features an extra wide, flat-bottomed beavertail fore-end and a more pronounced pistol grip for a better bench shooting position.



BARREL

A heavy barrel and a wide flat bottom fore-end enable steady shooting on sandbags.

XS & S

Action size

**1005-1105
mm**

Total length

**510-600
mm**

Barrel length

**3.5-3.9
kg**

Overall weight

CALIBER / RATE OF TWIST:

6+1 magazine: 204 Ruger / 12" | 222 Rem / 14" | 223 Rem / 8" | 223 Rem / 12"

5+1 magazine: 22-250 Rem / 14" | 243 Win / 10" | 260 Rem / 8" | 7mm-08 Rem / 9.5" | 308 Win / 11"

85 VARMINT STAINLESS

The Sako 85 Varmint Laminated Stainless rifle comes with all the same qualities as the Varmint model, only its stainless metal parts and stable laminate stock are optimized for rough conditions. The fluted barrel increases heat dissipation, decreases overall weight and gives this rifle its distinctive beauty.



PISTOL GRIP

The pronounced pistol grip is designed to improve the ergonomics of the prone position.

XS & S

Action size

**1015-1105
mm**

Total length

**510-600
mm**

Barrel length

**3.7-4.1
kg**

Overall weight

CALIBER / RATE OF TWIST:

6+1 magazine: 204 Ruger / 12" | 222 Rem / 14" | 223 Rem / 8" | 223 Rem / 12"

5+1 magazine: 22-250 Rem / 14" | 243 Win / 10" | 260 Rem / 8" | 7mm-08 Rem / 9.5" | 308 Win / 11"



L & XL

Action size

**1250
mm**

Total length

**660
mm**

Barrel length

**4.4
kg**

Overall weight

CALIBER / RATE OF TWIST:

4+1 magazine: 300 Win Mag / 11" | 338 Lapua Mag / 10"

Equipped with a hinged floorplate magazine in XL action size

85 LONG RANGE

If you are looking to shoot far, the Sako 85 Long Range rifle serves you well. This rifle has been designed for long range hunting in particular. Specific details, such as a muzzle brake, 26" match grade barrel, double sling studs and a stock designed for the prone position, guarantee that you will hit your target even from extreme distances.



MUZZLE BRAKE

Flush design muzzle brake was added to reduce the recoil. Muzzle brake will make it easier to keep the target in sights after the shot.



STOCK

The Sako 85 Long Range has a flat fore-end that provides better support while shooting without a bipod. The double studs enable simultaneous attachment of both the sling and bipod.

The Sako TRG is an accuracy concept designed to accomplish a single-minded mission: to hit the target – whatever it takes. It is a result of Sako's ambitious innovation laboratories, giving you unique performance that surpasses the highest demands for accuracy, reliability and versatility.

The TRG Accuracy concept is designed to meet individual demands. This means that it adapts to each shooter's personal style, build and posture. The super target-grade barrel, made especially for the TRG rifles, is cold-hammer forged. The sturdy bolt with three locking lugs accurately feeds rounds from the centerline of a detachable staggered two-row magazine. All Sako TRG receivers are drilled and tapped for a Picatinny rail.

Compositions include black, forest green or desert tan colored aluminum-reinforced stocks with various barrel and action finishes.

The TRG Accuracy Concept serves several military and law enforcement organizations as their primary sniper weapon system. The rifle is also used by long-range competition shooters and is a CISM competition winner.





NEW

TRG 22/42 A1

The Sako TRG 22 and 42 A1 are made for one specific task: to hit the target – whatever it takes. The 22 and 42 A1 have been taken to the next level with new features inspired by our flagship model, the TRG M10.



**1015-1105
mm**

Total length

**510-600
mm**

Barrel length

**3.7-4.1
kg**

Overall weight

CALIBER / RATE OF TWIST:

TRG 22 A1 (10 rounds in magazine): 308 Win / 11" | 260 Rem / 8" | 6.5 Creedmoor / 8"

TRG 42 A1 (5 rounds in magazine): 300 Win Mag / 11" (7 rounds in magazine) | 338 Lapua Mag / 10"



FULLY ADJUSTABLE REAR STOCK

All adjustments can be done quickly without the use of any tools. The stock can also be securely locked down when required.



MODULAR M-LOK FORE-STOCK

The M-LOK standard has a robust design and is compatible with a wide range of accessories. The M-LOK interface is also easy to use and offers a secure lock for many different applications.



DOUBLE PLUNGERS

The TRG 42 is equipped with double plungers, which make frequent cartridge ejection more seamless than ever.

TRG 42

BLACK, GREEN & DESERT TAN



TRG-42

Action size

**1020-1200
mm**

Total length

**510, 690
mm**

Barrel length

**5.1-5.3
kg**

Overall weight

CALIBER / RATE OF TWIST:

7+1 magazine: 300 Win Mag / 11"

5+1 magazine: 338 Lapua Mag / 10"

TRG 22

BLACK, GREEN & DESERT TAN

The TRG 22 rifle in .308 Win can handle a multitude of accuracy tasks. It's a thoroughbred 300 m ISSF standard competition rifle – and a CISM competition winner.



TGR-22

Action size

**1000-1150
mm**

Total length

**510, 660
mm**

Barrel length

**4.7-4.9
kg**

Overall weight

CALIBER / RATE OF TWIST:

10+1 magazine: 260 Rem / 8" | 308 Win / 11"

TRG M10

BLACK & COYOTE BROWN

The TRG M10 is a bolt action, multi-caliber, manually operated, magazine-fed, shoulder-fired sniper weapon with a high-capacity magazine and fully adjustable stock that provides a single weapon system solution for many different applications. A high level of configurability makes the TRG M10 an extremely versatile platform: it easily converts from a true long range precision rifle to a more compact piece of equipment.



AMBIDEXTROUS CONTROLS

The ambidextrous controls are well within the reach of the firing hand and are large enough to be also operated with gloves on. The robust and fully adjustable trigger unit can be detached for maintenance and adjustment without further disassembling the weapon.



**1037-1216,5
mm**

Total length

**509,5-689
mm**

Barrel length

**6-6.5
kg**

Overall weight

CALIBER / RATE OF TWIST:

10+1 magazine: 308 Win / 11"

7+1 magazine: 338 Lapua Mag / 10"

FULLY ADJUSTABLE REAR STOCK

All adjustments can be done quickly without the use of any tools. The stock can also be securely locked down when needed by using tools that come inside the weapon. The pistol grip has an interchangeable back strap in three different sizes; all three are included in the standard package.



TACTILE INDICATORS

Identification of modular components for different calibers can be done visually or from tactile indicators placed on each critical component.







The Sako A7 was created to offer a lightweight, genuine Sako rifle at an attractive price.

The Sako A7 has unique features that are not available in any other Sako or Tikka rifles: The special steel action is made in two sizes, S and M, and to comply with available calibers, the receiver is drilled and tapped for bases, the bolt has three locking lugs in front and a 70-degree angle for fast cycling. Furthermore, it has a polymer magazine with integral steel feeding lips to allow top loading without removing the magazine.

A7 SYNTHETIC STAINLESS

A weather-resistant rifle for tough weather conditions, the Sako A7 comes with a stainless steel barrel, action and bolt, and a copolymer black stock with a Soft Touch coating.



RECEIVER

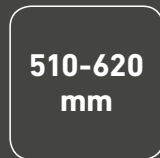
The receiver is drilled and tapped for mounts, weaver rails are also available. If these are to be used, they have to be glued – however, they may also be replaced with suitable steel bases that are readily available on the market.



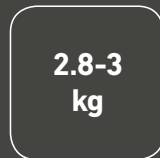
Action size



Total length



Barrel length



Overall weight

CALIBER / RATE OF TWIST:

3+1 magazine: 22-250 Rem / 14" | 243 Win / 10" | 7mm-08 Rem / 9.5" | 308 Win / 11" | 270 Win Short Mag / 10" | 300 Win Short Mag / 11" | 25-06 Rem / 10" | 270 Win / 10" | 30-06 / 11" | 7mm Rem Mag / 9.5" | 300 Win Mag / 11"

A7 SYNTHETIC

A black steel-barreled action and a copolymer black stock with a Soft Touch coating, makes the Sako A7 Synthetic a reliable and lightweight hunting companion.



STOCK

The black, lightweight and durable copolymer stock provides a good grip for fast handling.

S & M

Action size

**1015-1135
mm**

Total length

**510-620
mm**

Barrel length

**2.8-3
kg**

Overall weight

CALIBER / RATE OF TWIST:

3+1 magazine: 22-250 Rem / 14" | 243 Win / 10" | 7mm-08 Rem / 9.5" | 308 Win / 11" |
270 Win Short Mag / 10" | 300 Win Short Mag / 11" | 25-06 Rem / 10" |
270 Win / 10" | 30-06 / 11" | 7mm Rem Mag / 9.5" | 300 Win Mag / 11"

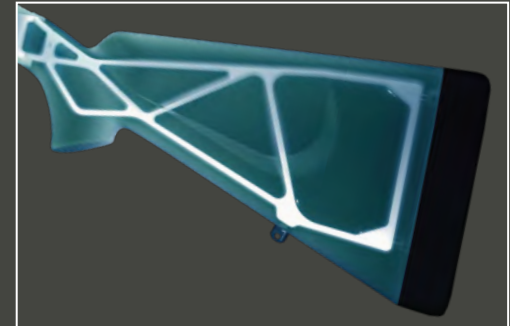
A7 ROUGHTECH PRO

Sako Roughtech Pro is a true hunting and shooting rifle designed for regular big game hunting. The Sako Roughtech stock is equipped with an advanced high energy dissipation recoil pad. The rough surface texture ensures a solid grip in all weather conditions. All stocks come with two 5 mm spacers for length of pull adjustment.



INTEGRATED ALUMINIUM BEDDING

The Roughtech stock has a fully integrated aluminium bedding that ensures a precise and rigid chassis.



S & M

Action size

**1125-1135
mm**

Total length

**620
mm**

Barrel length

**3.4
kg**

Overall weight

CALIBER / RATE OF TWIST:

3+1 magazine: 243 Win / 10" | 308 Win / 11" | 300 Win Short Mag / 11" | 270 Win / 10" | 30-06 / 11" | 7mm Rem Mag / 9.5" | 300 Win Mag / 11"

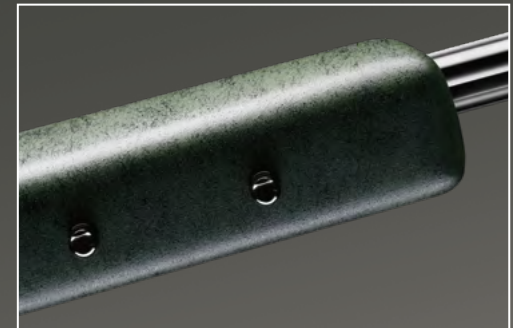
A7 ROUGHTECH RANGE

The Sako Roughtech Range model is excellent for long range and varmint shooting. Thanks to its wider stock fore end, the Range model provides excellent support in prone position when shooting without a bipod. The Roughtech stock has a fully integrated aluminium bedding that ensures a precise rigid chassis, as well as a rough surface texture that ensures a solid grip in all weather conditions.



TWO FRONT SLING STUDS

The two front sling studs enable the simultaneous attachment of both a bi-pod and a sling.



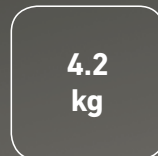
Action size



Total length



Barrel length



Overall weight

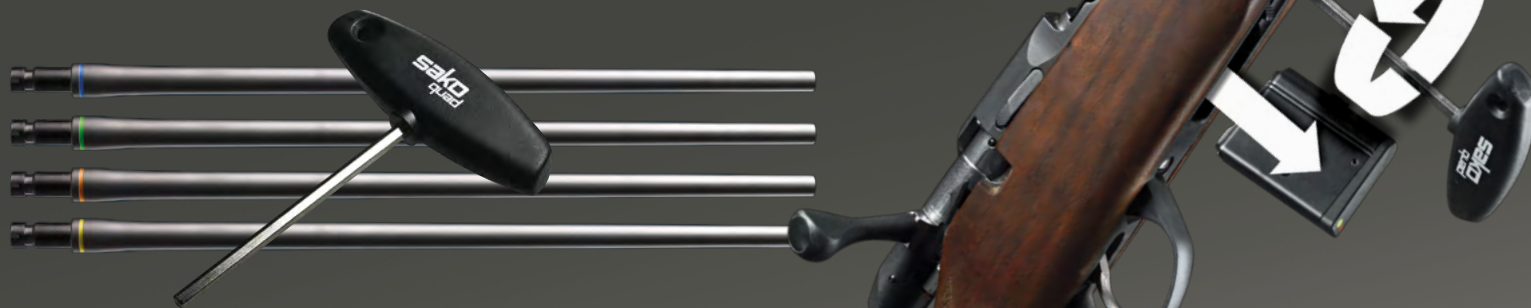
CALIBER / RATE OF TWIST:

3+1 magazine: 308 Win / 11" | 6.5 Creedmoor / 8" | 300 Win Short Mag / 11" | 25-06 Rem / 10" | 7mm Rem Mag / 9.5" | 300 Win Mag / 11"



The Sako Quad is a special small game bolt-action rimfire rifle with interchangeable barrels.

The barrel change only takes a few seconds: Just insert a tool, turn it three full circles, and tilt the barrel upwards while pulling out the action. Then simply insert another barrel, and possibly switch calibers. This makes the Sako Quad extremely versatile – and its accuracy phenomenal. Corresponding barrels have individual serial numbers. However, the Sako Quad is no ordinary rimfire: it is a small bore hunting and training firearm that functions as its own system, complete with several options to choose from.



Barrels can easily be changed using the Sako Quad barrel tool.

QUAD RANGE

The Sako Quad Range model is an extremely versatile rimfire rifle that can accompany you on a small game hunt as well as on the range. An ergonomic stock combined with high adaptability makes for a rifle like no other.



CALIBERS

Each Sako Quad caliber has unique characteristics and is designed for a specific targeting purpose. Calibers from left to right: 17 Mach 2, another version of the popular 22 LR; 22 LR, the universal caliber for target shooting and close-range small game hunting; 17 HMR, a high velocity varmint cartridge with excellent ballistics up to 150 yards; 22 WMR, the most powerful Sako Quad caliber – an excellent small game and varmint cartridge.

**1015
mm**

Total length

**560
mm**

Barrel length

**4.5
kg**

Overall weight



Switch-barrel

CALIBER / RATE OF TWIST:

10+1 magazine: 22 LR / 16.5" | 17 Mach 2 / 9"

9+1 magazine: 22 WMR / 16" | 17 HMR / 9"

QUAD HUNTER PRO

The Sako Quad Hunter Pro has the latest Sako features and is designed to look and feel like a traditional Sako hunting rifle. The full-sized walnut stock resembles the famous Sako 75 design and offers the same accuracy as all legendary Sako hunting rifles.



COLOR CODING

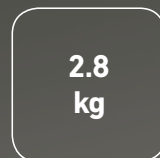
Both barrels and magazines are color-coded and marked to indicate matching pairs.



Total length



Barrel length



Overall weight



Switch-barrel

CALIBER / RATE OF TWIST:

5+1 magazine: 22 LR / 16.5" | 22 WMR / 16" | 17 HMR / 9" | 17 Mach 2 / 9"

QUAD VARMINT

The Sako Quad Varmint is an excellent choice for hunting and bench-rest target shooting with its flat-bottomed extra wide fore-end and heavier barrel.



**1025
mm**

Total length

**560
mm**

Barrel length

**3.5
kg**

Overall weight



Switch-barrel

CALIBER / RATE OF TWIST:

5+1 magazine: 22 LR / 16.5" | 22 WMR / 16" | 17 HMR / 9" | 17 Mach 2 / 9"

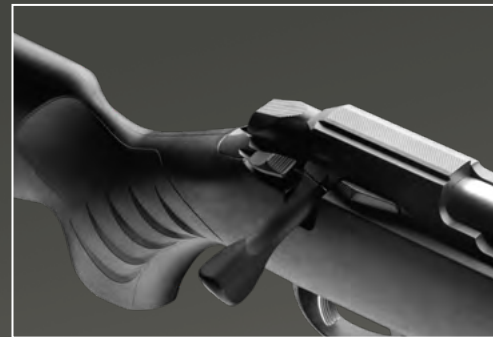
QUAD SYNTHETIC

The Sako Quad Synthetic comes with a stylish modern synthetic stock, blued barrels and a black rubber recoil pad. Sako Quad butt stock spacers are available for modifying the length of pull.



QUALITY RIMFIRE

All Sako Quad rifles are built with the same standards as Sako centerfire rifles. The same feel, ergonomics and quality are implemented for our rifles of larger calibers. We want to provide our customers with Sako's known high-quality features – regardless of the caliber.



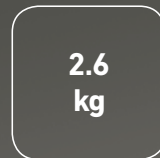
**1010
mm**

Total length



**560
mm**

Barrel length



**2.6
kg**

Overall weight



Switch-barrel

CALIBER / RATE OF TWIST:

5+1 magazine: 22 LR / 16.5" | 22 WMR / 16" | 17 HMR / 9" | 17 Mach 2 / 9"

QUAD HEAVY BARREL

The Sako Quad Heavy Barrel rifle can handle repeated firing without getting too warm. The Monte Carlo-type cheek piece on a black synthetic stock grants a great bench shooting position. The rifle's length of pull can be adjusted with recoil pad spacers.



**1025
mm**

Total length

**560
mm**

Barrel length

**3.2
kg**

Overall weight



Switch-barrel

CALIBER / RATE OF TWIST:

5+1 magazine: 22 LR / 16.5" | 22 WMR / 16" | 17 HMR / 9" | 17 Mach 2 / 9"

FINNFIRE II

We take pride in our past, and the Sako Finnfire II celebrates the old Finnfire rifle. The Finnfire II brings a kind of retro spirit into our rimfire selection and features some of the classic design elements of the old Finnfire.



BOLT HANDLE

The Sako Finnfire II has a full metallic bolt handle in the spirit of the old Finnfire.

**1025
mm**

Total length

**560
mm**

Barrel length

**2.8
kg**

Overall weight

CALIBER / RATE OF TWIST:

5+1 magazine: 22 LR / 16.5" | 17 HMR / 9"

Sako Premium

Customized luxury based on your preferences

We're proud to introduce Sako Premium, our most exclusive product line. Bring us your idea of a perfect rifle and allow our expert craftsmen to turn it into reality. We make your vision come to life with custom-built rifles featuring gorgeous details that reflect your distinct personality. And with over 95 years of experience under our belt, you can rest assured that your dream rifle is in very good hands.





Premium stock

Pick a comfortable and accurate stock that matches your personal preferences.

World-famous bolt action

Our Premium rifles offer a variety of different action sizes, providing unrivaled reliability and a smooth firing experience for every shot.



Truly unique details

Special engravings can be added to the rifle for a truly striking appearance. Sako Prestige offers a wide range of options, while Sako Bespoke can be tailored from the ground up.



SAKO BESPOKE

Sako Bespoke is our most exclusive Premium offering. This model can be personalized to meet even the most ambitious visions all the way down to completely unique engravings. The only thing limiting you is your own imagination. Contact us and learn more about creating the rifle of your dreams.

premium@sako.fi





**WORLD-FAMOUS SAKO
BOLT-ACTION**



HIGHEST QUALITY MATERIALS



TRULY INDIVIDUAL DETAILS

All Sako Bespoke rifles are completely unique and the images shown are only a reference to display some possible options.

SAKO PRESTIGE

Sako Prestige offers a selection of engravings and details to suit your individual taste, because we understand that a rifle is more than a means to an end. It's a reflection of who you are.



M & L

Action size

**1085-1120
mm**

Total length

**570, 580
mm**

Barrel length

**3.3-3.5
kg**

Overall weight

CALIBER / RATE OF TWIST:

5+1 magazine: 270 Win / 10" | 7x64 / 10" | 30-06 Spr / 11" | M / 9.3x66 (.370 Sako Mag) / 14"

4+1 magazine: 375 H&H Mag / 12"



ALSO AVAILABLE WITH BLACK METAL COMPONENTS

Choose freely between the stainless steel and black metal parts.



HIGH-QUALITY WALNUT STOCK

Made for an ergonomically optimal shooting posture.



A SELECTION OF FINE ENGRAVINGS

Give your rifle a dash of personality with beautiful engravings.



The Optilock™ scope mounts offer refined design that perfectly compliments Sako manufactured rifles. In order to offer even better usability, the Optilock™ scope mounts have received new features and improvements that will make this well-regarded scope mounting system the choice for ultimate accuracy.

The standard Optilock™ base features an indexing edge that makes it easier to tighten the ring without any accidental rotation. All Optilock™ bases have a brand new angular design to perfectly go along with the beauty of the rifle itself.

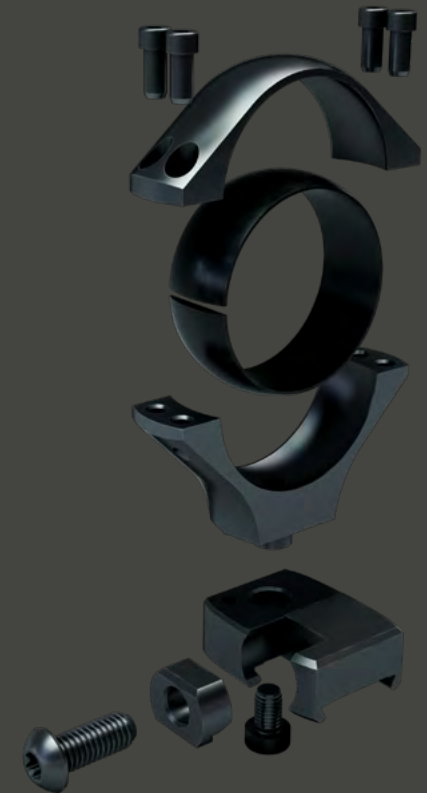


Optilock™ bases and adjustment rings are offered in multiple different lengths and sizes. This allows for a multitude of different scope sizes and brands to be fitted onto Sako & Tikka rifles.

The 34mm and 36mm ring sizes are always paired with the heavy duty (HD) bases. This is done to offer maximum durability while mounting even the heaviest of scopes and to guarantee that they have zero flex or movement.



NOTE: The HD rings are not suitable for use with the standard Optilock™ bases. The HD bases can be used with standard rings of any size.



The ring insert of the inner scope is made of polymer and protects the scope tube from deforming.

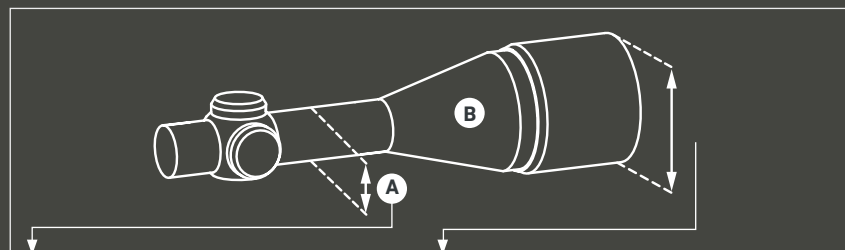
PICK THE RIGHT OPTILOCK COMBINATION

With every Optilock™ package the user can find a selection table behind the box. This ensures it's easy to find the correct base and ring combination for your exact needs. More info at www.sako.fi

1. CHOOSE OPTILOCK™ BASE

RIFLE	Select the following Optilock Base:
Tikka, 17 mm rail	Optilock Base, Tikka
Sako 85 (XS-SM), Sako 75 (I-III, SM), Sako L461/L579, S491/M591	Optilock Base, Sako Short
Sako 85 (SM-L), Sako 75 (III-V)	Optilock Base, Sako Long*
Sako 85 (M-XL), Sako 75 (IV-V)	Optilock Base, Sako Extended
Sako Quad, Finnfire II, 11 mm rail	Optilock Base, Sako Rimfire
Sako A7, Picatinny/Weaver	Optilock Base, Weaver-rail

2. CHOOSE OPTILOCK™ RINGS



A Tube diameter	B Objective outer diameter (mm)		Select the following Optilock Ring:
	w/ std barrel	w/ heavy barrel	
1"	<59	<51	1" XTRA LO*
	<63	<55	1" LO*
	<73	<65	1" ME*
	<83	<75	1" HI*
30 mm	<63	<55	30mm XTRA LO*
	<67	<59	30mm LO*
	<75	<67	30mm ME*
	<83	<75	30mm HI*
34 mm	<77	<69	34mm LO*
	<87	<81	34mm ME*
36 mm	<79	<71	36mm LO*

34 mm and 36 mm rings come with proprietary Optilock HD bases. These rings are not compatible with standard bases.

sako CARTRIDGES

Making both rifles and cartridges is a matter of pride as much as it is about offering you, the shooter, the best possible cartridge and rifle performance. Manufacturing a single accurate cartridge is not a challenge. Neither is making ten million. The trickiest part is making the ten million act the exact same way.

We make more than 100 different loads in 32 popular calibers. Naturally, we have chosen the best components to meet the needs of hunters and shooters. There are two factors that determine the result in a hunting situation: one is the bullet placement in the game or target, and the other is the bullet terminal performance. Take a moment to read our cartridge table, as it contains relevant information on calibers, bullet types and their trajectories. Their recommended use is indicated with symbols to help you choose the right bullet and load for a particular type of hunting or shooting.



SAKO CARTRIDGES HIGHLIGHTS

NEW 2018 – TRG CARTRIDGES

Sako Cartridges introduces a new precision cartridge line for shooters seeking ultimate precision and the ballistic performance of a factory round. All components of the TRG cartridge line are carefully selected for ultimate consistency and accuracy. TRG Precision cartridge manufacturing follows the stringent Sako quality standards, which involves an all-new accuracy testing process.

6.5 Creedmoor, Lapua Scenar-L 8.8g / 136gr | .260 Rem., Lapua Scenar-L 8.8g / 136gr | 308 Win., Lapua Scenar-L 11.3g / 175gr | 300 Win Mag., Lapua Scenar-L 11.3g / 175gr | .338 Lapua Magnun., Sierra Matchking 19.4g / 300gr



NEW 2018 – 6.5 CREEDMOOR

Originally designed for long range target shooting, the 6.5 Creedmoor has proven its potential as a superbly effective hunting caliber. Combining good ballistic properties of the 6.5mm bullet and an ability to reach high velocities and energies, the 6.5mm Creedmoor offers excellent hunting performance with high accuracy and convenient recoil. **TRG Precision** 8,8g (136 gr) offers ultimate, non-compromising accuracy for long range precision shooters. **Deerhead** with its heavy 10,1g (156 gr) bonded-core bullet is probably the most effective bullet in the market for hunting deer, moose and wild boar at short to medium distances. **Powerhead II** features a polymer-tipped lead-free 7,7g (120 gr) bullet offering outstanding performance for long range lead-free hunting.

HAMMERHEAD & SUPER HAMMERHEAD

Sako Hammerhead and Sako Super Hammerhead are controlled expansion bullets that are the perfect choice for hunting deer and moose sized game as well as wild boar. Controlled expansion is achieved through a proprietary Sako bonding technology, in which a lead core has been chemically bonded to the copper jacket. As a result, the mushrooming of the bullet is optimized, weight retention maximized and meat loss minimized. Choose Hammerhead for the most common short to medium distance hunting situations and Super Hammerhead for medium to long range hunting.



SAKO HAMMERHEAD



SAKO SUPER HAMMERHEAD



SAKO POWERHEAD

SAKO POWERHEAD II

POWERHEAD & POWERHEAD II

The Sako Powerhead (Barnes TSX®) is an expanding hunting bullet with an extremely high weight retention and excellent penetration. Thanks to its traditional all-copper composition, it maintains a weight retention of more than 99% upon impact.

The Sako Powerhead II (Barnes Tipped TSX®) has a polymer tip and a re-engineered nose cavity to provide an even faster expansion when compared to the original Powerhead (TSX®). The polymer tip initiates rapid expansion and improves ballistics at longer distances making it ideal for long range hunting.

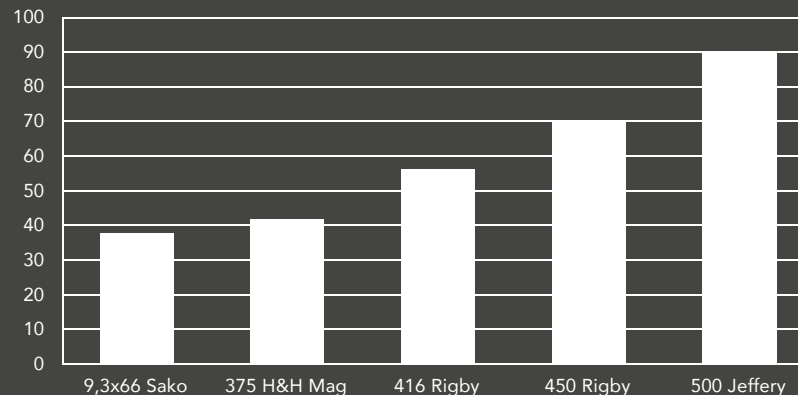
SAKO SAFARI CARTRIDGES



Sako has been manufacturing hunting cartridges since 1928. In 2011, we introduced Sako 85 Safari XL calibers. Our Limited Edition premium Sako 85 Safari rifles – handmade by master gunsmiths – call for nothing less than real Safari calibers: 500 Jeffery, 450 Rigby, 416 Rigby, 375 H & H Mag, 9,3x66 Sako.

Big game safari is not an everyday sport, but a rare adventure. Make it an unforgettable event for once-in-a-lifetime results using the best equipment possible: Sako 85 Safari rifles & Sako Safari cartridges.

CARTRIDGE	BULLET WEIGHT		BULLET TYPE	VELOCITY		S.D	K.O
	GRAMS	GRAIN		M/S	FPS		
9.3x66 Sako	18.5	286	Hammerhead	765	2510	.305	38
375 H&H Mag	19.4	300	Twinhead II	770	2526	.305	41
416 Rigby	25.9	400	Twinhead II	725	2378	.330	57
450 Rigby	29.2	450	Twinhead II	725	2378	.307	70
500 Jeffery	34.7	535	Twinhead II	710	2330	.292	91



TAYLOR KNOCK OUT FACTOR

The Taylor Knockout Factor is a commonly used mathematical approach for evaluating the stopping power of hunting cartridges. The Taylor KO Factor is a measure that allows hunters to compare bullets in respect to their stopping power; the bigger the Taylor KO factor the stronger the stopping power. The Taylor KO Factor was developed by the professional big-game hunter John "Pondoro" Taylor.

SAKO CARTRIDGES – UNRIVALED ACCURACY AND CONSISTENT PERFORMANCE

When it comes to cartridges we at Sako never settle for the second best. Our legacy in accuracy and performance has proven this time and time again. We employ the latest technology as well as traditional gunsmith know-how to bring you the best cartridges money can buy. Familiarize yourself with our different product series and pick the right alternative for your rifle and shooting purpose.

RAPID EXPANSION SERIES

Maximized stopping power for small game.
Non-bonded core and a lighter jacket.
Mainly used for varmint and trophy hunting.



CONTROLLED EXPANSION SERIES

Optimized stopping power and good durability against bone. Bonded core and a thicker jacket.
Mainly used for hunting medium and big game.



LEAD-FREE SERIES

Non-leaded cartridges with high penetration capabilities and good durability. Maximal weights retention. Mainly used for big game hunting.



TARGET SERIES

Precision performance and optimal aerodynamics.
Higher shooting velocity, less bullet drop and wind drift.





- 1) **GAMEHEAD** Traditional and accurate soft point bullet. Excellent all-purpose hunting bullet on small/medium sized game.
- 2) **ARROWHEAD** Ballistically advanced big game bullet (Nosler Ballistic Tip) manufactured for Sako by Nosler®. The bullet is very effective for thin-skinned big game and antelope/elk type big game at long ranges. The bullet has a polymer tip to maintain the good ballistic form, and the jacket strengthens gradually from thin front to heavy rear. This contributes to fast shock and large wound channel.
- 3) **SAKO HAMMERHEAD** Heavy, jacketed bonded core, soft point for larger calibers. Specially designed bullet form and construction prevents core separation and allows controlled mushrooming for excellent stopping power. The bullet is very effective for elk type big game hunting at short and medium ranges.
- 4) **SAKO SUPER HAMMERHEAD** Heavy jacketed, strong and non-fragmenting, ensuring controlled expansion. Bonded core construction produces high weight retention, producing good penetration. Boat-tailed for high-ballistic efficiency means flatter trajectory. First developed and tested in Sako ballistic laboratories, followed by actual extensive big game hunting tests.
- 5) **DEERHEAD** Deerhead is a bonded all-around bullet that can withstand extreme deformation without separation of the jacket from the lead core. Bullet expand rapidly and seldom loses more than 10% of its original weight.
- 6) **ARROWHEAD II** Ballistically advanced big game bullet (Swift Scirocco II®) with heavy construction manufactured for Sako by Swift Bullets®. The polymer tip maintains the streamlined form until the bullet hits game tissue. Bonded core construction provides fast shock, controlled expansion and high weight retention.
- 7) **TWINHEAD II** With its unique cross-member jacket design and the bonded front core, the Swift A-Frame™ Bullet has become famous for its ability to combine three critical performance features – controlled expansion, deep penetration and 95% weight retention at all velocities.
- 8) **POWERHEAD** Famous, all-copper and non-toxic, expanding big game bullet (Barnes TSX) made for Sako by Barnes Bullets. Ensures deep penetration and very high weight retention.
- 9) **POWERHEAD II** (Barnes Tipped TSX®) is all-copper polymer tipped hunting bullet. Polymer tip and a re-engineered nose cavity provide even faster expansion than original TSX. The addition of the polymer tip initiates rapid expansion and improves ballistics at extended distances for long range hunting.
- 10) **DANGEROUS GAME SOLID** Strong, flat nosed, solid brass bullet that is non-toxic and contains no lead. Power grooves designed for less friction. The bullet penetrates tissue deeply and reliably without expanding. DS-Solid is a reliable dangerous game bullet for special hunting situations.
- 11) **SPEEDHEAD** Full metal jacket bullet that delivers ultimate accuracy for target shooting and small game hunting. Ensures minimal pelt and meat damage on furred game or in bird hunting.
- 12) **CUTHEAD** Competition and training bullet leaving a clean hole on target paper for easy score interpretation. In full jacket form, this bullet may also be used on small game hunting like our Speehead™ bullets.
- 13) **RACEHEAD OTM** A thin jacketed, match grade open tip boat tailed bullet developed solely for rifle competition. When You need long range accuracy, demand this load.

CALIBER	BULLET				GAME								VELOCITY				BARREL LENGTH	ENERGY				TRAJECTORY						
	Code	NAME	Weight			S	V	L	D	M	B	T	m/s					Joules				cm / m (Line of Sight 4.5 cm)						
			g	grs	BC G1								0	100	200	300	mm	0	100	200	300	50	100	150	200	250	300	
222 Rem	106G	GAMEHEAD	3,2	50	0,181									970	795	640	505	600	1524	1024	664	414	0,4	2,1	0	-7,0	-19,8	-40,8
222 Rem	110G	GAMEHEAD	3,56	55	0,207									950	798	662	540	600	1608	1136	781	520	0,4	2,1	0	-6,8	-19,1	-38,5
222 Rem	422G	ARROWHEAD	3,2	50	0,238									965	830	708	596	600	1509	1117	812	576	0,2	1,9	0	-6,0	-17,0	-33,6
222 Rem	490G	POWERHEAD II	3,2	50	0,229									950	815	690	576	600	1444	1062	762	530	0,3	2,0	0	-6,4	-18,0	-35,9
222 Rem	105G	SPEEDHEAD	3,2	50	0,181									970	795	640	505	600	1524	1024	664	414	0,4	2,1	0	-7,0	-19,8	-40,8
222 Rem Range	105G	SPEEDHEAD	3,2	50	0,181									970	795	640	505	600	1524	1024	664	414	0,4	2,1	0	-7,0	-19,8	-40,8
222 Rem	111G	RACEHEAD	3,4	52	0,221									930	785	661	547	600	1457	1039	737	503	0,6	2,2	0	-7,1	-20,5	-41,3
222 Rem Mag	106G	GAMEHEAD	3,2	50	0,181									975	799	644	509	570	1540	1035	673	419	0,4	2,1	0	-6,9	-19,6	-40,3
222 Rem Mag	110G	GAMEHEAD	3,56	55	0,207									980	825	686	561	570	1712	1213	839	562	0,2	1,9	0	-6,2	-17,7	-35,4
222 Rem Mag	105G	SPEEDHEAD	3,2	50	0,181									975	799	644	509	570	1540	1035	673	419	0,4	2,1	0	-6,9	-19,6	-40,3
223 Rem	106G	GAMEHEAD	3,2	50	0,181									970	799	644	506	600	1505	1021	664	410	0,4	2,1	0	-6,9	-19,9	-40,8
223 Rem	110G	GAMEHEAD	3,56	55	0,207									965	812	674	551	600	1660	1174	810	541	0,3	2,0	0	-6,5	-18,4	-36,9
223 Rem Range	110G	GAMEHEAD	3,56	55	0,207									965	812	674	551	600	1660	1174	810	541	0,3	2,0	0	-6,5	-18,4	-36,9
223 Rem	422G	ARROWHEAD	3,2	50	0,238									980	844	720	608	600	1556	1154	841	599	0,1	1,8	0	-5,7	-16,3	-37,1
223 Rem	492G	POWERHEAD II	3,56	55	0,272									985	868	759	657	600	1727	1342	1025	768	0,0	1,6	0	-5,3	-14,9	-29,5
223 Rem	105G	SPEEDHEAD	3,2	50	0,181									1025	843	683	542	600	1702	1151	756	475	0,0	1,8	0	-6,0	-17,3	-35,2
223 Rem Range	105G	SPEEDHEAD	3,2	50	0,181									1025	843	683	542	600	1702	1151	756	475	0,0	1,8	0	-6,0	-17,3	-35,2
223 Rem	113G	RACEHEAD	4,5	69	0,300									875	774	680	595	600	1712	1338	1033	793	0,8	2,4	0	-7,2	-19,6	-37,8
22-250 Rem	106G	GAMEHEAD	3,2	50	0,181									1125	929	760	609	600	2050	1399	935	602	-0,5	1,2	0	-4,7	-13,6	-27,8
22-250 Rem	110G	GAMEHEAD	3,56	55	0,207									1100	931	781	647	600	2156	1544	1087	745	-0,5	1,2	0	-4,6	-13,1	-37,7
22-250 Rem	422G	ARROWHEAD	3,2	50	0,238									1145	991	854	729	600	2124	1591	1181	862	-0,7	0,9	0	-3,8	-12,5	-22,0
22-250 Rem	105G	SPEEDHEAD	3,2	50	0,181									1150	950	776	623	600	2142	1461	976	630	-0,6	1,1	0	-4,4	-12,8	-26,3
243 Win	112E	GAMEHEAD	5,8	90	0,349									950	860	775	694	600	2617	2145	1740	1396	0,1	1,7	0	-5,4	-14,8	-28,8
243 Win	113E	GAMEHEAD	6,5	100	0,367									905	819	737	660	600	2654	2175	1761	1410	0,3	2,1	0	-6,0	-16,6	-32,3
243 Win	130E	DEERHEAD	6,5	100	0,257									885	768	660	560	600	2545	1919	1416	1019	0,8	2,5	0	-7,3	-20,2	-40,0
243 Win	492E	POWERHEAD II	5,2	80	0,331									890	797	710	629	600	2053	1647	1308	1026	0,3	2,2	0	-6,5	-18,0	-34,9
243 Win	114E	SPEEDHEAD	5,8	90	0,350									875	788	706	629	600	2233	1810	1454	1155	0,7	2,3	0	-6,7	-18,4	-35,6
25-06 Rem	125E	GAMEHEAD	7,6	117	0,381									910	829	753	681	600	3105	2579	2128	1740	0,4	1,9	0	-5,8	-16,0	-30,9
260 Rem	122H	DEERHEAD	10,1	156	0,360									765	687	613	544	600	2958	2383	1898	1497	1,8	3,5	0	-9,3	-25,1	-48,3
260 Rem	160H	TRG PRECISION	8,8	136	0,545									840	785	733	682	600	3105	2714	2362	2046	0,8	2,4	0	-6,6	-17,7	-33,8
260 Rem Range	118H	SPEEDHEAD	6,5	100	0,250									915	791	677	574	600	2713	2027	1487	1066	0,6	2,2	0	-6,9	-19,1	-37,2
6.5 Creedmoor	123H	DEERHEAD	10,1	156	0,348									815	732	653	579	600	3354	2704	2152	1690	1,2	2,9	0	-8,0	-21,8	-42,1
6.5 Creedmoor	493H	POWERHEAD II	7,8	120	0,412									890	816	745	678	600	3089	2597	2167	1792	0,5	2,1	0	-6,1	-16,5	-31,9
6.5 Creedmoor	160H	TRG PRECISION	8,8	136	0,545									860	805	751	700	600	3254	2850	2484	2155	0,6	2,2	0	-6,2	-16,8	-31,9
6.5x55 SE	122H	DEERHEAD	10,1	156	0,377									760	684	613	546	630	2920	2366	1898	1507	1,9	3,6	0	-9,3	-24,9	-48,3
6.5x55 SE	493H	POWERHEAD II	7,8	120	0,443									855	788	723	661	630	2851	2419	2038	1704	0,7	2,3	0	-6,6	-17,9	-34,3
6.5x55 SE Range	118H	SPEEDHEAD	6,5	100	0,250									875	754	644	543	630	2481	1844	1344	957	0,9	2,6	0	-7,7	-21,1	-41,4
6.5x55 SE	119H	RACEHEAD	9,1	140	0,526									790	735	682	632	630	2811	2433	2096	1796	1,3	2,9	0	-7,9	-21,1	-39,9
270 Win	211B	HAMMERHEAD	10,1	156	0,321									830	738	653	573	580	3482	2756	2155	1660	1,1	2,8	0	-8,0	-21,6	-41,5
270 Win	485B	POWERHEAD	8,4	130	0,431									915	842	772	706	580	3527	2985	2514	2102	0,3	1,9	0	-5,6	-15,2	-29,4
270 Win	488B	POWERHEAD II	7,1	110	0,377									1005	919	837	759	580	3586	3000	2488	2046	-0,3	1,3	0	-4,5	-12,4	-24,2
7x33 Sako	109B	GAMEHEAD	5,1	78	0,147									750	568	412	280	600	1434	823	432	200	3,4	5,6	0	-16,3	-48,4	-104
7x33 Sako	108B	SPEEDHEAD	5,1	78	0,147									750	568	412	280	600	1434	823	432	200	3,4	5,6	0	-16,3	-48,4	-104
7x64	121B	GAMEHEAD	7,8	120	0,328									935	840	751	666	580	3409	2754	2197	1730	0,3	1,9	0	-5,7	-15,9	-31,3
7x64	216B	HAMMERHEAD	11,0	170	0,407									795	724	656	593	580	3481	2887	2375	1936	1,4	3,1	0	-8,3	-22,1	-42,0
7x64	407B	ARROWHEAD II	9,7	150	0,515									860	801	744	690	580	3595	3118	2692	2313	0,7	2,2	0	-6,2	-16,9	-32,5
7x64	495B	POWERHEAD II	9,7	150	0,450									860	793	728	667	580	3595	3053	2578	2163	0,7	2,3	0	-6,4	-17,6	-33,9
7 x 65R	216B	HAMMERHEAD	11	170	0,407									790	719	652	589	580	3438	2843	2343	1908	1,5	3,1	0	-8,4	-22,4	-42,4
7 mm Rem Mag	216B	HAMMERHEAD	11,0	170	0,407									860	786	715	648	630	4074	3400	2816	2315	0,7	2,3	0	-6,7	-18,3	-35,2
7 mm Rem Mag	407B	ARROWHEAD II	9,7	150	0,515									890	830	772	716	630	3850	3345	2895	2493	0,4	2,0	0	-5,8	-15,5	-29,8
7 mm Rem Mag	495B	POWERHEAD II	9,7	150	0,450									890	821	756	693	630	3850	3277	2774	2334	0,5	2,1	0	-5,1	-16,1	-31,1
300 BLK	129A	GAMEHEAD	8,0	123	0,320									635	556	481	412	500	1613	1234	927	681	4,2	6,1	0	-15,2	-41,1	-79,6
300 BLK	120A	SPEEDHEAD	8,0	123	0,330									640	563	490	423	500	1638	1266	961	714	4,1	5,9	0	-14,8	-39,8	-76,9
300 BLK SUBSONIC	137A	RACEHEAD	14,3	220	0,608									365	344	327	314	500	950	846	765	701	17,0	18,8	0	-40,9	-	-



GAME BIRDS
 VARMIN AND SMALL GAME
 LIGHT "BIG GAME", ROE DEER AND SMALL ANTELOPES
 BIG GAME, DEER AND MID SIZED ANTELOPES
 BIG GAME, MOOSE, ELAND, BEAR, LION ETC.
 BIG GAME, BEAR ETC.
 HEAVIEST BIG GAME, CAPE BUFFALO ETC.
 TARGET SHOOTING, COMPETITION

S HAMMERHEAD = SPBT Bonded core
 HAMMERHEAD = SP Bonded core
 POWERHEAD = Barnes TSX®
 POWERHEAD II = Barnes TTSX®
 TWINNHEAD II = Swift A-Frame
 ARROWHEAD = Nosler Ballistic Tip®

ARROWHEAD II = Swift Scirocco II®
 SPEEDHEAD = Full metal jacket
 GAMEHEAD = Soft point
 SUPER RANGE = Hollow point BT
 RACEHEAD = Sierra MatchKing®
 DEERHEAD = SP Bonded core

CALIBER	BULLET			GAME								VELOCITY				BARREL	ENERGY				TRAJECTORY							
	Code	NAME	Weight			F	B	C	D	E	G	H	m/s				mm	Joules				cm / m (Line of Sight 4.5 cm)						
			g	grs	BC G1								0	100	200	300		0	100	200	300	50	100	150	200	250	300	
7.62 x 39	134A	GAMEHEAD	8,0	123	0,342									715	632	555	487	420	2045	1598	1233	948	2,7	4,4	0	-11,4	-31,6	-60,4
7.62 x 39	117A	SPEEDHEAD	8,0	123	0,342									715	632	555	487	420	2045	1598	1233	948	2,7	4,4	0	-11,4	-31,6	-60,4
308 Win	129A	GAMEHEAD	8,0	123	0,320									920	822	731	645	600	3373	2693	2128	1660	0,4	2,0	0	-6,0	-16,7	-32,6
308 Win	227A	HAMMERHEAD	13,0	200	0,356									710	634	563	498	600	3267	2607	2054	1608	2,6	4,2	0	-11,2	-30,5	-58,8
308 Win	235A	SUPER HAMMERHEAD	9,7	150	0,410									855	781	712	645	600	3546	2961	2456	2020	0,8	2,3	0	-6,8	-18,5	-35,6
308 Win	236A	SUPER HAMMERHEAD	11,7	180	0,421									760	693	630	570	600	3369	2802	2313	1892	1,8	3,5	0	-9,1	-24,0	-45,8
308 Win	256A	HAMMERHEAD	11,7	180	0,387									750	678	610	546	600	3281	2681	2169	1739	2,0	3,7	0	-9,5	-25,3	-49,0
308 Win Wild Boar	256A	HAMMERHEAD	11,7	180	0,387									750	678	610	546	600	3281	2681	2169	1739	2,0	3,7	0	-9,5	-25,3	-49,0
308 Win	408A	ARROWHEAD II	11,7	180	0,520									780	725	672	621	600	3548	3063	2631	2248	1,4	3,1	0	-8,2	-21,8	-41,1
308 Win	496A	POWERHEAD II	10,9	168	0,470									780	719	660	605	600	3312	2813	2375	1992	1,5	3,1	0	-8,5	-22,6	-43,4
308 Win	120A	SPEEDHEAD	8,0	123	0,330									890	797	710	628	600	3157	2548	2008	1573	0,6	2,2	0	-6,5	-18,0	-35,0
308 Win Range	120A	SPEEDHEAD	8,0	123	0,330									890	797	710	628	600	3157	2548	2008	1573	0,6	2,2	0	-6,5	-18,0	-35,0
308 Win Super Range	146A	HOLLOWPOINT	6,6	102	0,236									935	802	681	571	600	2889	2127	1534	1079	0,4	2,1	0	-6,6	-18,6	-36,5
308 Win	141A	RACEHEAD	10,9	168	0,462									810	747	687	629	600	3571	3041	2569	2154	1,1	2,8	0	-7,5	-20,2	-38,6
308 Win	157A	TRG PRECISION	11,5	175	0,490									800	741	684	630	600	3680	3157	2691	2279	1,2	2,8	0	-7,6	-20,5	-39,0
7.62x53R	227A	HAMMERHEAD	13,0	200	0,356									720	644	572	506	580	3359	2684	2118	1660	2,5	4,1	0	-10,6	-24,4	-36,7
7.62x53R	236A	SUPER HAMMERHEAD	11,7	180	0,421									770	703	639	578	580	3458	2879	2380	1949	1,7	3,4	0	-8,8	-23,4	-44,4
7.62x53R	256A	HAMMERHEAD	11,7	180	0,387									765	692	623	558	580	3413	2794	2266	1819	1,8	3,6	0	-9,1	-24,1	-46,6
7.62x53R Range	120A	SPEEDHEAD	8,0	123	0,330									900	800	709	626	580	3240	2561	2009	1569	0,6	2,4	0	-6,5	-18,6	-35,7
30-06 Spring	129A	GAMEHEAD	8,0	123	0,320									940	841	748	662	600	3521	2816	2230	1745	0,2	1,9	0	-5,7	-15,7	-30,9
30-06 Spring	228A	HAMMERHEAD	14,3	220	0,408									720	653	590	530	600	3695	3041	2478	2006	2,4	4,0	0	-10,1	-27,5	-53,2
30-06 Spring	235A	SUPER HAMMERHEAD	9,7	150	0,410									900	824	752	684	600	3929	3293	2742	2267	0,4	2,0	0	-5,9	-16,1	-31,2
30-06 Spring	236A	SUPER HAMMERHEAD	11,7	180	0,421									820	750	684	621	600	3922	3282	2727	2248	1,1	2,7	0	-7,6	-20,5	-38,9
30-06 Spring	256A	HAMMERHEAD	11,7	180	0,387									820	745	673	605	600	3934	3244	2649	2140	1,1	2,8	0	-7,6	-20,7	-38,4
30-06 Spring	408A	ARROWHEAD II	11,7	180	0,520									815	758	704	652	600	3874	3354	2889	2477	1,0	2,6	0	-7,3	-19,6	-37,3
30-06 Spring	497A	POWERHEAD II	11,7	180	0,484									830	769	710	654	600	4030	3460	2953	2504	0,9	2,5	0	-7,0	-18,8	-35,9
30-06 Spring	120A	SPEEDHEAD	8,0	123	0,330									890	797	710	628	600	3157	2548	2008	1573	0,6	2,2	0	-6,5	-18,0	-35,0
30-06 Spring Range	120A	SPEEDHEAD	8,0	123	0,330									890	797	710	628	600	3157	2548	2008	1573	0,6	2,2	0	-6,5	-18,0	-35,0
300 WSM	236A	SUPER HAMMERHEAD	11,7	180	0,421									885	812	742	676	600	4568	3844	3214	2669	0,5	2,1	0	-6,1	-16,6	-32,2
300 WSM	408A	ARROWHEAD II	11,7	180	0,520									880	821	764	709	600	4517	3927	3401	2932	0,5	2,1	0	-5,9	-15,9	-30,6
300 Win Mag	228A	HAMMERHEAD	14,3	220	0,408									805	734	666	602	650	4619	3836	3162	2583	1,3	2,9	0	-8,0	-21,5	-40,8
300 Win Mag	235A	SUPER HAMMERHEAD	9,7	150	0,410									1010	927	850	776	650	4948	4172	3503	2924	-0,3	1,3	0	-4,4	-12,3	-23,8
300 Win Mag	236A	SUPER HAMMERHEAD	11,7	180	0,421									880	807	738	672	650	4517	3799	3175	2635	0,6	2,2	0	-6,1	-16,9	-32,7
300 Win Mag	409A	ARROWHEAD II	11,7	180	0,520									885	825	768	713	650	4568	3973	3442	2967	0,5	2,0	0	-5,9	-15,7	-30,1
300 Win Mag	497A	POWERHEAD II	11,7	180	0,484									880	817	757	699	650	4530	3907	3350	2856	0,5	2,1	0	-6,0	-16,3	-31,2
300 Win Mag	140A	RACEHEAD	11,3	175	0,505									925	863	804	746	650	4834	4210	3649	3146	0,1	1,7	0	-5,2	-14,2	-27,3
300 Win Mag	157A	TRG PRECISION	11,3	175	0,490									965	900	837	777	650	5355	4658	4031	3470	-0,1	1,4	0	-4,7	-12,8	-24,7
8.2x53R	201F	HAMMERHEAD	13,0	200	0,276									740	641	550	469	600	3549	2662	1958	1423	2,4	4,1	0	-11,2	-30,9	-59,9
8x57IS	120F	GAMEHEAD	9,7	150	0,330									815	725	641	560	580	3228	2557	1998	1527	1,3	3,0	0	-8,3	-22,3	-43,2
8x57IS	201F	HAMMERHEAD	13,0	200	0,276									765	664	571	487	580	3793	2857	2110	1539	2,1	3,8	0	-10,1	-28,2	-55,2
8x57IS	498F	POWERHEAD II	10,4	160	0,400									815	742	673	607	580	3454	2865	2355	1916	1,2	2,8	0	-7,7	-20,8	-39,8
8x57IRS	121F	GAMEHEAD	11,3	175	0,374									775	699	627	559	580	3406	2771	2231	1772	1,7	3,5	0	-8,9	-23,7	-45,8
8x57IRS	201F	HAMMERHEAD	13,0	200	0,276									720	622	533	454	580	3359	2511	1842	1336	2,7	4,4	0	-12,2	-33,2	-63,7
338 Win Mag	211F	HAMMERHEAD	16,2	250	0,342									745	664	588	518	620	4496	3572	2801	2176	2,2	3,9	0	-9,8	-27,1	-52,8
338 Lapua Mag.	300F	TRG PRECISION	19,4	300	0,768									840	801	763	726	650	6844	6225	5649	5114	0,7	2,2	0	-6,2	-16,7	-31,5
9.3x53R Finnish	102D	GAMEHEAD	16,6	256	0,244									685	578	483	403	600	3877	2760	1930	1344	3,6	5,6	0	-14,5	-38,9	-76,7
9.3x62	460D	ARROWHEAD	16,2	250	0,494									745	688	634	582	580	4496	3839	3258	2745	1,9	3,5	0	-9,1	-24,3	-46,1
9.3x62	266D	HAMMERHEAD	18,5	286	0,315									710	625	546	475	580	4663	3611	2755	2083	2,7	4,4	0	-11,9	-32,3	-62,0
9.3x62	477D	POWERHEAD	16,2	250	0,361									730	654	582	517	580	4317	3465	2748	2162	2,3	4,0	0	-10,1	-27,9	-54,3
9.3x62 Range	132D	SPEEDHEAD	15,0	231	0,380									750	677	608	543	580	4228	3442	2775	2214	2,0	3,7	0	-9,5	-25,4	-49,4
9.3x66 Sako	266D	HAMMERHEAD	18,5	286	0,315									765	676	593	517	580	5414	4227	3253	2473	2,0	3,7	0	-9,5	-26,2	-51,4
9.3x66 Sako	479D	POWERHEAD	18,5	286	0,411									745	677	613	552	580	5134	4250	3482	2828	2,1	3,7	0	-9,5	-25,1	-48,6
9.3x66 Sako Range	132D	SPEEDHEAD	15,0	231	0,380									760	686	616	551	580	4342	3538	2856	2281	1,9	3,6	0	-9,3	-24,6	-47,7
9.3x74R	266D	HAMMERHEAD	18,5	286	0,315									685	601	525	456	630	4341	3346	2546	1921	3,1	5,0	0	-13,1	-35,2	-67,0
9.3x74R	477D	POWERHEAD	16,2	250	0,361									720	645	574	509	630	4199	3366	2666	2096	2,5	4,1	0	-10,6	-29,1	-56,3
375 H&H Mag	480D	TWINHEAD II	19,4	300	0,325																							

RELOADING COMPONENTS

BULLETS

BULLET	DESCRIPTON	WEIGHT		DIAMETER	QUANTITY PER BOX
		gr	g		
5.7mm / .224					
105G	Full metal jacket	50	3.2	5.68 - 5,70 mm	250
106G	Soft point	50	3.2	5.68 - 5,70 mm	100
110G	Soft point	55	3.6	568 - 5,70 mm	100
6mm / .243					
114E	Full metal jacket	90	5.8	6.15 - 6.17mm	100
112E	Soft point	90	5.8	6.15 - 6.17mm	100
.270"					
211B	Hammerhead	156	10.1	7.03 - 7.05mm	50
7mm / .284					
216B	Hammerhead	170	11.1	7.21 - 7.23 mm	50
108B	Full metal jacket	78	5.1	7.23 - 7.25 mm	250
109B	Soft point	78	5.1	7.23 - 7.25 mm	250
7.62mm / .30					
143A	Full metal jacket	123	8	7.83 - 7.85 mm	250
145A	Full metal jacket / cutting edge	123	8	7.83 - 7.85 mm	250
146A	Hollowpoint	102	6.6	7.83 - 7.85 mm	250
147A	Hollowpoint / cutting edge	102	6.6	7.83 - 7.85 mm	250
235A	Super Hammerhead	150	9.7	7.83 - 7.85 mm	50
136A	Sako OTM	175	11.3	7.83 - 7.85 mm	100
236A	Super Hammerhead	180	11.7	7.83 - 7.85 mm	50
256A	Hammerhead	180	11.7	7.83 - 7.85 mm	50
227A	Hammerhead	200	13.0	7.83 - 7.85 mm	50
228A	Hammerhead	220	14.3	7.83 - 7.85 mm	50
.311 (7.62x39)					
134A	Soft point	123	8	7.87 - 7.91mm	50
117A	Full metal jacket	123	8	7.87 - 7.91mm	250
8mm / .323					
201F	Hammerhead	200	13	8.20 - 8.22 mm	50
.338					
211F	Hammerhead	250	16.2	8.59 - 8.61 mm	50
9.3mm					
102D	Gamehead	256	16.6	9.26 - 9.28 mm	25
266D	Hammerhead	286	18.5	9.26 - 9.28 mm	25

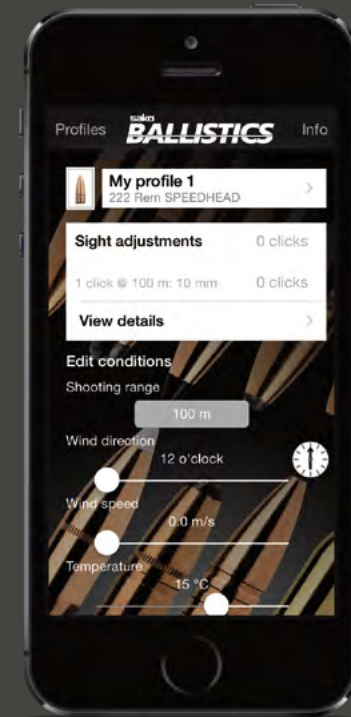
CASES

CALIBER	QUANTITY PER BOX
222 Rem	100
222 Rem Mag	100
223 Rem	100
22-250 Rem	100
243 Win	100
25-06 Rem	100
260 Rem	100
6.5x55 SE	100
270 Win	50
7x33	100
7mm-08	100
7 x 64	100
7 x 65R	100
7 mm Rem Mag	50
7.62 x 39	100
300 BLK	100
308 Win	100
7.62 x 53R	100
30-06 Sprg	100
300 Win Mag	50
300 WSM	50
8.2 x 53R	100
8 x 57JS	100
8 x 57JRS	100
338 Fed	100
338 Win Mag	50
9.3 x 53R Finnish	50
9.3 x 62	50
9.3 x 66 Sako	50
9.3 x 74R	50
375 H&H Mag	50

SAKO BALLISTICS

The Sako Mobile Ballistics App is an easy-to-use ballistic calculator that allows hunters and long-range shooters to identify the right cartridge for the given purpose.

The application stores data on all of Sako's cartridges, and you can create your own profile for your rifle and ammunition combo. The software is free of charge and provides you with product pictures as well as specifications in order to help you find your match. Download it from the App Store or Google Play, and create your own profile. An internet-based desktop version can be found at bullet.sako.fi.



SOFTWARE FEATURES



Different user profiles



Bullet review



Temperature compensation



Create custom cartridges



Various scope clicks



Air pressure compensation



Metric and imperial units



Variable zeroing range



Uphill and downhill compensation

sako

A Beretta Group Company

Sako Limited

P.o.box 149

Fi-11101 Riihimäki

Finland

www.sako.fi

2018

All weight values in this catalogue are approximations and may vary from indicated due to stock material density, caliber and environmental conditions.

All rights reserved.